

WENTWORTH ESTATES COMMUNITY DEVELOPMENT DISTRICT

Monthly Field Manager's Report
December 2023

Prepared For:
James Ward
District Manager

Prepared By:



Calvin, Giordano & Associates, Inc.

A SAFEbuilt® COMPANY

CGA Project No. 17-9809

January 1, 2023

**WENTWORTH ESTATES
COMMUNITY DEVELOPMENT DISTRICT**

TABLE OF CONTENTS

I. PURPOSE 3

II. CURRENT ASSET UPDATES 3

III. LOCATION MAP 6

IV. DISTRICT ASSET MANAGER PHOTOS..... 7

WENTWORTH ESTATES COMMUNITY DEVELOPMENT DISTRICT

I. PURPOSE

The purpose of this report is to provide the District Manager with an update on recent inspection-related activities. We will continue to provide updated monthly inspection reports on the status of ongoing field activities.

II. CURRENT ASSET UPDATES

1. Landscaping
 - A. Treviso Bay Boulevard

2. Lake Maintenance

3. Fountain Maintenance

4. Corrective Actions

1. Landscaping

A. Treviso Bay Boulevard

- The remaining hardwood trees along the parapet wall will be trimmed the first week in January.
- New sod was put down on west end of the front entrance.
- Pine straw installation was completed.
- Selective plant material throughout the front entrance has outlived its lifespan and is starting to die off. The District staff is working on a replacement plan.
- The first initial wet check took place during the last week in December.

2. Lake Maintenance

- This month's work focused on gaining control of submersed vegetation and treating any remaining shoreline weeds. Surface algae has shown significant improvement due to recent treatment and cooler weather. Some surface algae were treated in lakes 23 and 42, however, no major blooms were observed. Planktonic algae in lake 3 was treated as well.
- Submersed algae (Chara) were targeted in lakes 5, 6, 9, 17, and 32. The effectiveness of this treatment will be determined during the next few visits. New growth of Chara was observed in lake 32 and will be treated during the next visit. Hydrilla was recently treated in lake 42. An additional treatment will be conducted next month to eradicate any remaining growth. Hydrilla will also need treatment in lake 21. Illinois pondweed was treated in lake 20 and is dying off.
- The Gulf Spike rush in the wetland of lake 15 has received several treatments to maintain flow and improve aesthetics. The technician will continue to allow gulf spike rush to grow around the perimeter of the lake and keep the center open.
- Removed trash and minor debris in lakes 26-32 and 42.
- Technicians utilized backpacks to treat shoreline weeds in lakes 1-17, 19, and 23. Tall dead weeds were cut and physically removed in lakes 25, 26, 28, and 35. Lakes 40-42 will be targeted during the next few visits. Targets include primrose, torpedo grass, vines, cattails, and dog fennel.
- Water levels were normal this month and are now slightly higher due to recent rain.

3. Entrance Maintenance

- District staff is in the process of working with the vendors on pricing to replace all reflective signs along Treviso Bay Boulevard.
- Additional landscape lighting is being added to the oak trees in the ROW on Treviso Bay Boulevard where there are dark spots along the boulevard.

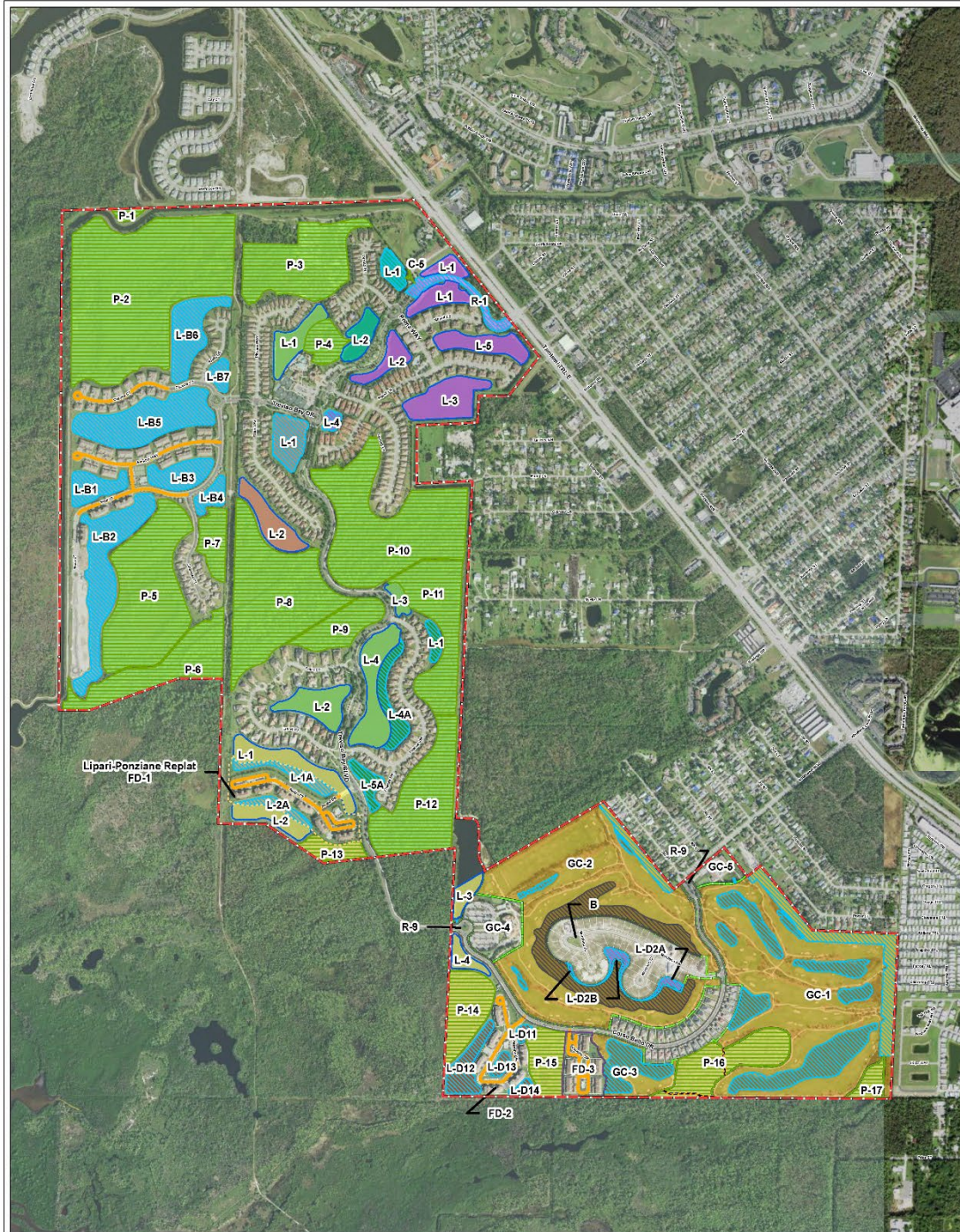
4. Fountain Maintenance

- The lighting in the front entrance fountains is being replaced, existing lighting is failing and is now approximately 17 Years old.

5. *Corrective Actions*

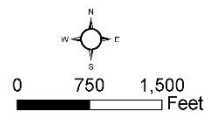
- Weeds continue to be an issue inside the landscaping beds.
- The spike rush in selective lakes continues to be an issue. All selective lakes have been also treated.

III. LOCATION MAP



Wentworth Estates Community Development District Assets Map

Legend	
Ownership Status	
	Water Owned by WECDD
	Water Conveyed to WECDD
	Water to be Conveyed to WECDD
	Land Conveyed to WECDD
	Easement in Favor of WECDD
	Easement in Favor of GC
Tracts	
L-1	Lakes
P-1	Preserves
R-1	Roads
GC-1	Golf Course
FD-1	Future Development
Plats	
	Plat of Paves-Pavia (PB 18 PG 1)
	Plat of Beta Firenze (PB 53 PG 86)
	Plat of Beta (PB 47 PG 69)
	Plat of Lipari-Ponziane Replat (PB 11 PG 62)
	Plat of Lipari-Ponziane Replat Tract HD 2 (PB 54 PG 66)
	Plat of Lipari-Ponziane Replat Tract FD-3, 0
	Plat of Lipari-Ponziane (PB 47 PG 80)
	Plat of Montebello (PB 59 PG 23)
	Plat of Ponte Riatta (PB 55 PG 45)
	Plat of Vancini (PB 46 PG 17)
	Plat of Via Veneto (PB 47 PG 15)
	Golf Course
	Traverse Bay

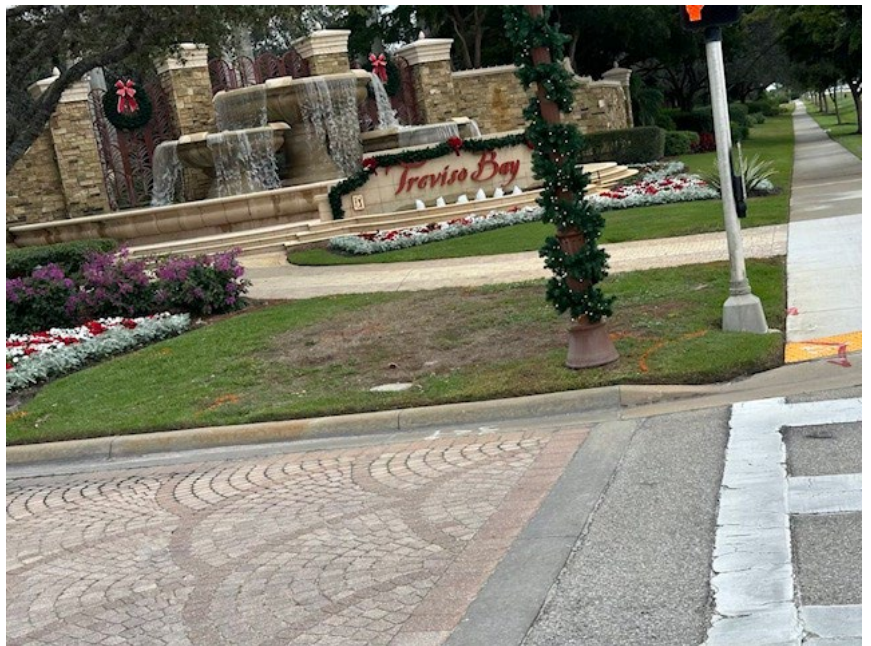


Print Date: 11/12/2020

IV. DISTRICT ASSET MANAGER PHOTOS



Area where sod will be replaced at the front entrance.



Area where sod will be replaced at the front entrance.



Bridge lighting that was replaced along the front entrance.



Annuals being installed at the front entrance.



New annuals that were installed at the front entrance.