

**ADDITIONAL ITEM FOR AGENDA**

**CONSIDERATION OF PROPOSALS FROM DISTRICT ENGINEER**

---

# WENTWORTH ESTATES COMMUNITY DEVELOPMENT DISTRICT

## MEMORANDUM

**Date:** *November 1, 2017*

**To:** *Board of Supervisors*

**From:** *James P. Ward, District Manager*

**Subject:** *Selection Process for District Engineer*

---

As we discussed at the October, 2017 meeting, the Board authorized at the request of the District Manager to advertise for a District Engineer, in accordance with the Statute.

Chapter 287.055 governs the process that CDD's utilize in the selection of an engineer, as such, we have advertised in the Naples Daily News that the District is accepting qualifications for a District Engineer. The qualification process is one that is non price based, and essentially, the Board would rank the engineer's proposals, then authorize staff to negotiate with the number one ranked firm, and bring back to the Board a form or agreement that outlines the basic business terms upon which the District would do business with the engineer, and the hourly rates by engineering category, and each time the CDD would need services, the Engineer would submit a work authorization for the proposed work, which would then be authorized by either the Manager or Board, as appropriate.

Attached is the legal advertisement from the newspaper, and proposals were due on November 1, 2017 at noon.

In addition, we sent the qualifications to the following firms for interest in submitting proposals:

- 1) Hole, Montes and Associates
- 2) Banks Engineering
- 3) Calvin Giordano and Associates
- 4) Johnson Engineering
- 5) Morris Engineering

The District received one proposal from Calvin, Giordano and Associates, as such, the Board has basically two options. First is to reject the proposal received and authorize the Manager to re-advertise for a District Engineer, or second, to rank CGA as the number 1 firm and then to authorize the District Manager and District Attorney to negotiate an agreement with CGA, materially in the form attached hereto.

To shorten this process, enclosed is a standard form of agreement that both the District Attorney and I have utilized for a number of years for the retention of an engineer, and I have asked CGA to also provide a rate schedule that would be Exhibit to the form of agreement.

**WENTWORTH ESTATES COMMUNITY DEVELOPMENT DISTRICT  
REQUEST FOR QUALIFICATIONS – DISTRICT ENGINEER**

**NOTICE IS HEREBY GIVEN** that the Wentworth Estates Community Development District, located in Collier County, Florida announces that professional District engineering services will be required on a continuing basis, with services to include planning, preparing reports and preparing plans, designs and specifications on behalf of the District.

The engineering firm selected will act in the general capacity of District Engineer and provide the District with engineering services, as required. Any firm or individual desiring to provide professional services to the District must furnish a resume of its qualifications and past experience on Standard Form No. 330 with pertinent supporting data.

The District will review all applicants and will comply with the State procedures as established by the Consultants' Competitive Negotiations Act, Section 287.055, Florida Statutes. All applicants interested must submit **one (1) pdf file electronically** to the District Manager at [JimWard@JPWardAssociates.com](mailto:JimWard@JPWardAssociates.com) of Standard Forms No. 254 and 255 (or such replacement forms) and letter of interest by **12:00 P.M., on Wednesday, November 1, 2017**. **In addition, please submit (6) bound printed copies, All applicants must insure delivery of the electronic submittal by contacting the District Manager.**

If applicants have any questions, they may contact the District Manager as **(954) 658-4900**, or at 2900 Northeast 12<sup>th</sup> Terrace, Oakland Park, Florida 33334

**Wentworth Estates Community Development District  
James P. Ward  
District Manager**

**Ad Date: October 19, 2018**



# Calvin, Giordano & Associates, Inc.

EXCEPTIONAL SOLUTIONS™

## PROFESSIONAL FEE SCHEDULE

Building Code Services  
 Civil Engineering / Roadway & Highway Design  
 Coastal Engineering  
 Code Enforcement  
 Construction Engineering & Inspection (CEI)  
 Construction Services  
 Data Technologies & Development  
 Electrical Engineering  
 Engineering  
 Environmental Services  
 Facilities Management  
 Geographic Information Systems (GIS)  
 Governmental Services  
 Landscape Architecture  
 Planning  
 Project Management  
 Redevelopment & Urban Design  
 Surveying & Mapping  
 Traffic Engineering  
 Transportation Planning  
 Water / Utilities Engineering  
 Website Development

Principal	215.00	<b>LANDSCAPE ARCHITECT</b>	
Contract Administrator	190.00	Associate, Landscape Architect	165.00
Project Administrator	165.00	Senior Landscape Architect	135.00
Executive Assistant /Clerical	75.00	Environmental Administrator	125.00
		Landscape Architect	120.00
<b>ENGINEERING</b>		Environmental Specialist	105.00
Associate, Engineering (VI)	190.00	Landscape CADD Technician	95.00
Director, Engineering (V)	175.00	Environmental Assistant	90.00
Project Manager (IV)	150.00	Landscape Inspector/Arborist	105.00
Project Engineer (III)	130.00	Landscape Designer	120.00
Engineer (II)	110.00	Landscape Site Plan Reviewer	135.00
Jr. Engineer (I)	100.00		
Senior CADD Tech Manager	115.00	<b>INDOOR AIR QUALITY SERVICES</b>	
CADD Technician	95.00	Sr. Environmental Scientist	125.00
Permit Administrator	90.00	Environmental Scientist	100.00
<b>DATA TECH DEVELOPMENT</b>		<b>CONSTRUCTION</b>	
Associate, Data Tech Dev.	165.00	Associate, Construction	165.00
GIS Coordinator	145.00	Construction Management Director	135.00
GIS Specialist	125.00	Construction Manager	125.00
Multi-Media 3D Developer	115.00	Senior Inspector	100.00
GIS Technician	100.00	Inspector	90.00
Sr. Applications Developer	165.00	Construction Coordinator	90.00
Applications Developer	135.00		
Network Administrator	155.00	<b>EMERGENCY MANAGEMENT</b>	
System Support Specialist	115.00	Director	145.00
IT Support Specialist	85.00	Planner	105.00
		Assistant Planner	90.00
<b>GOVERNMENTAL SERVICES</b>			
Associate, VP	190.00	<b>PLANNING</b>	
Director of Code Enforcement	145.00	Associate, Planning	175.00
Director of Building Code	145.00	Director of Planning	150.00
Project Manager	145.00	Planning Administrator	150.00
Grants Administrator	125.00	Planning Manager	145.00
Code Enforcement Field Supervisor	110.00	Senior Planner	125.00
Code Enforcement Field Inspector	90.00	Assistant Planner	90.00
Building Official	115.00		
Building Plans Reviewer	90.00	<b>EXPERT WITNESS</b>	
Building Inspector	90.00	Principal/Associate	330.00
Permit Processor	75.00	Registered Engineer/Surveyor	280.00
		Project Engineer	230.00
<b>SURVEYING</b>			
Associate, Surveying	165.00		
Senior Registered Surveyor	145.00		
Survey Crew	135.00		
Registered Surveyor	130.00		
Survey Coordinator	105.00		
CADD Technician	95.00		
3D Laser Scanner	355.00		
Hydrographic Survey Crew	330.00		
G.P.S. Survey Crew	155.00		
Sub-meter G.P.S	75.00		
Soft Dig (per hole)	480.00		
Utility Locates (per hour)	205.00		

*In addition to the hourly rates listed above, charges will include direct out-of-pocket expenses such as reproduction, overnight mail, and other reimbursables billed at a multiplier of 1.25.*

1800 Eller Drive  
 Suite 600  
 Fort Lauderdale, FL  
 33316  
 954.921.7781 phone  
 954.921.8807 fax

[www.cgasolutions.com](http://www.cgasolutions.com)

Effective October 1, 2014

**AGREEMENT FOR  
PROFESSIONAL ENGINEERING SERVICES**

**THIS AGREEMENT FOR PROFESSIONAL ENGINEERING SERVICES** (this "**Agreement**") is made and entered into effective this \_\_\_\_\_ day of \_\_\_\_\_, 2017, by and between **WENTWORTH ESTATES COMMUNITY DEVELOPMENT DISTRICT**, a local unit of special-purpose government established pursuant to Chapter 190, Florida Statutes (the "**District**") and \_\_\_\_\_, a Florida corporation (the "**Engineer**").

**RECITALS**

**WHEREAS**, the District is a local unit of special purpose government established pursuant to the Uniform Community Development District Act of 1980, as codified in Chapter 190, Florida Statutes, by ordinance of the Board of County Commissioners of Collier County, Florida; and

**WHEREAS**, the District is authorized to plan, acquire and/or maintain improvements, facilities and services in conjunction with the development and maintenance of the lands within the District; and

**WHEREAS**, pursuant to Sections 190.033 and 287.055, Florida Statutes, the District solicited qualifications from qualified firms and individuals to provide professional engineering services to the District on a continuing basis; and

**WHEREAS**, The Engineer submitted a proposal to serve in this capacity; and

**WHEREAS**, the District's Board of Supervisors ("**Board**") ranked the Engineer as the most qualified firm to provide professional engineering services for the District and authorized the negotiation of a contract pursuant to Section 287.055, Florida Statutes; and

**WHEREAS**, the District intends to employ the Engineer to perform engineering, construction administration, environmental management and permitting, financial and economic studies, as defined by a separate work authorization or work authorizations; and

**WHEREAS**, the Engineer shall serve as the District's professional representative in each service or project to which this Agreement applies and will give consultation and advice to the District during performance of these services.

**NOW, THEREFORE**, for and in consideration of the mutual covenants herein contained, the acts and deeds to be performed by the parties hereto and the payments by the District to the Engineer of the sums of money herein specified, it is mutually covenanted and agreed as follows:

**ARTICLE 1. INCORPORATION OF RECITALS.** The recitals stated above are true and correct and are incorporated by reference herein as a material part of this Agreement.

**ARTICLE 2. SCOPE OF SERVICES.**

- A.** The Engineer will provide general engineering services, including:
  - 1.** Preparation of any necessary reports and attendance at meetings of the Board.

2. Assisting in meeting with necessary parties involving bond issues, special reports, feasibility studies or other tasks.
3. Providing professional engineering services including but not limited to review and execution of documents under the District's Trust Indentures and monitoring of District projects.
4. Any other items requested by the Board of Supervisors or the District Manager.

**B.** The Engineer shall, when authorized by the Board or the District Manager, provide general services related to construction of any District projects including, but not limited to:

1. Periodic visits to the site, or full time construction management of District projects, as directed by District.
2. Processing of contractor's pay estimates.
3. Preparation of, and/or assistance with, the preparation of work authorizations, requisitions, change orders and acquisitions for review by the District Manager, District Counsel and the Board.
4. Final inspection and requested certificates for construction including the final certificate of construction.
5. Consultation and advice during construction, including performing all roles and actions required of any construction contract between District and any contractor(s) in which the Engineer is named as owner's representative or "Engineer."
6. Any other activity related to construction as authorized by the Board.

**C.** With respect to maintenance of the facilities, the Engineer shall render such services as authorized by the Board.

### **ARTICLE 3. METHOD OF AUTHORIZATION.**

**A.** Each service or project shall be authorized in writing by the District. The written authorization shall be incorporated in a work authorization which shall include the scope of services, compensation, project schedule, and special provisions or conditions specific to the service or project being authorized ("**Work Authorization**"). Authorization of services or projects under this Agreement shall be at the sole option of the District.

**B.** The Engineer shall perform its obligations under this Agreement as expeditiously and efficiently as are consistent with professional skill and care and the orderly progress of the construction of the District's facilities and improvements and meet such project schedules as may be developed by the District and consistent with information provided to the Engineer by the District and applicable government agencies. The Engineer agrees that all services shall be provided in such a manner as to meet the District's reasonable expectation and to provide the Engineer's best efforts to ensure the timely progression of the work being performed by the District.

**ARTICLE 4. COMPENSATION.** It is understood and agreed that the payment of compensation for services under this Agreement shall be stipulated in each Work Authorization. One of the following methods will be utilized:

**A. Lump Sum Amount** – The District and the Engineer shall mutually agree to a lump sum amount for the services to be rendered payable monthly in direct proportion to the work accomplished. For any lump-sum or cost-plus-a-fixed-fee professional service contract over the threshold amount provided in Section 287.017 of the Florida Statutes for CATEGORY FOUR, the District shall require the Engineer to execute a truth-in-negotiation certificate stating that wage rates and other factual unit costs supporting the compensation are accurate, complete, and current at the time of contracting. The price for any lump sum Work Authorization, and any additions thereto, will be adjusted to exclude any significant sums by which the District determines the Work Authorization was increased due to inaccurate, incomplete, or noncurrent wage rates and other factual unit costs. All such adjustments must be made within one (1) year following the completion of the work contemplated by the lump sum Work Authorization.

**B. Hourly Personnel Rates** – For services or projects where the scope of services is not clearly defined or recurring services or other projects where the District desires the use of the hourly compensation rates outlined in Exhibit A, attached hereto and incorporated by this reference. The District and the Engineer may agree to a “not to exceed” amount when utilizing hourly personnel rates for a specific work authorization.

**ARTICLE 5. REIMBURSABLE EXPENSES.** Reimbursable expenses consist of actual expenditures made by the Engineer, its employees, or its consultants in the interest of the services for the incidental expenses as listed as follows:

**A.** Expenses of transportation and living when traveling in connection with a project and fees paid for securing approval of authorities having jurisdiction over the project. All expenditures shall be made in accordance with Chapter 112, Florida Statutes, and with the District’s travel policy.

**B.** Expense of reproduction, postage and handling of drawings and specifications.

**ARTICLE 6. TERM OF AGREEMENT.** It is understood and agreed that the term of this Agreement will be from the time of execution of this Agreement by the parties hereto until terminated in accordance with its terms.

**ARTICLE 7. SPECIAL CONSULTANTS.** When authorized in writing by the District, additional special consulting services may be utilized by the Engineer and paid for on a cost basis.

**ARTICLE 8. BOOKS AND RECORDS.** The Engineer shall maintain comprehensive books and records relating to any services performed under this Agreement, which shall be retained by the Engineer for a period of at least four (4) years from and after completion of any services hereunder, or such further time as required under Florida law. The District, or its authorized representative, shall have the right to audit such books and records at all reasonable times upon prior notice to the Engineer.

**ARTICLE 9. OWNERSHIP OF DOCUMENTS.**

**A.** All rights in and title to all plans, drawings, specifications, ideas, concepts, designs, sketches, models, programs, software, creation, inventions, reports, or other tangible work product originally developed by the Engineer pursuant to this Agreement (the “Work Product”) shall be

and remain the sole and exclusive property of the District when developed and shall be considered work for hire.

**B.** The Engineer shall deliver all Work Product to the District upon completion thereof, unless it is necessary for the Engineer in the District's sole discretion to retain possession for a longer period of time. Upon early termination of the Engineer's services hereunder, the Engineer shall deliver all such Work Product whether complete or not. The District shall have all rights to use any and all Work Product. The Engineer shall retain copies of the Work Product for its permanent records, provided the Work Product is not used without the District's prior express written consent. The Engineer agrees not to recreate any Work Product contemplated by this Agreement, or portions thereof, which if constructed or otherwise materialized, would be reasonably identifiable with the Project.

**C.** The District exclusively retains all manufacturing rights to all materials or designs developed under this Agreement. To the extent the services performed under this Agreement produce or include copyrightable or patentable materials or designs, such materials or designs are work made for hire for the District as the author, creator, or inventor thereof upon creation, and the District shall have all rights therein including, without limitation, the right of reproduction, with respect to such work. The Engineer hereby assigns to the District any and all rights the Engineer may have including, without limitation, the copyright, with respect to such work. The Engineer acknowledges that the District is the motivating factor for, and for the purpose of copyright or patent, has the right to direct and supervise, the preparation of such copyrightable or patentable materials or designs.

**ARTICLE 10. ACCOUNTING RECORDS.** Records of the Engineer pertaining to the services provided hereunder shall be kept on a basis of generally accepted accounting principles and shall be available to the District or its authorized representative for observation or audit at mutually agreeable times.

**ARTICLE 11. REUSE OF DOCUMENTS.** All documents including drawings and specifications furnished by the Engineer pursuant to this Agreement are instruments of service. Such documents are not intended or represented to be suitable for reuse by the District or others on extensions of the work for which they were provided or on any other project. Any reuse without specific written consent by the Engineer will be at the District's sole risk and without liability or legal exposure to the Engineer. All documents including drawings, plans and specifications furnished by the Engineer to the District are subject to reuse in accordance with Section 287.055(10), Florida Statutes.

**ARTICLE 12. ESTIMATE OF COST.** Since the Engineer has no control over the cost of labor, materials, or equipment or over a contractor's methods of determining prices, or over competitive bidding or market conditions, the Engineer's opinions of probable cost provided as a service hereunder are to be made on the basis of his experience and qualifications and represent the Engineer's best judgment as a design professional familiar with the construction industry, but the Engineer cannot and does not guarantee that proposals, bids, or the construction costs will not vary from opinions of probable cost prepared by the Engineer. If the District wishes greater assurance as to the construction costs, it shall employ an independent cost estimator at its own expense. Services to modify approved documents to bring the construction cost within any limitation established by the District will be considered additional services and justify additional fees.

**ARTICLE 13. INSURANCE.**

**A.** Subject to the provisions of this Article, the Engineer shall, at a minimum, maintain throughout the term of this Agreement the following insurance:



1. Workers' Compensation Insurance in accordance with the laws of the State of Florida.
2. Commercial General Liability Insurance, including, but not limited to, bodily injury (including contractual), property damage (including contractual), products and completed operations, and personal injury with limits of not less than One Million and No/100 Dollars (\$1,000,000.00) per occurrence, and not less than Two Million and No/100 Dollars (\$2,000,000.00) in the aggregate covering all work performed under this Agreement.
3. Automobile Liability Insurance, including without limitation bodily injury and property damage, including all vehicles owned, leased, hired, and non- owned vehicles with limits of not less than One Million and No/100 Dollars (\$1,000,000.00) combined single limit covering all work performed under this Agreement.
4. Professional Liability Insurance for Errors and Omissions, with limits of not less than Two Million and No/100 Dollars (\$2,000,000.00).

**B.** All insurance policies secured by the Engineer pursuant to the terms of this Agreement shall be written on an "occurrence" basis to the extent permitted by law.

**C.** The District and the District's officers, supervisors, agents, staff, and representatives shall be named as additional insured parties, except with respect to the Worker's Compensation Insurance for which only proof of insurance shall be provided. The Engineer shall furnish the District with the Certificate of Insurance evidencing compliance with the requirements of this Section. No certificate shall be acceptable to the District, unless it provides that any change or termination within the policy periods of the insurance coverage, as certified, shall not be effective within thirty (30) days of prior written notice to the District. Insurance coverage shall be from a reputable insurance carrier, licensed to conduct business in the state of Florida

**D.** If the Engineer fails to have secured and maintained the required insurance, the District has the right (without any obligation to do so, however), to secure such required insurance in which event, the Engineer shall pay the cost for that required insurance and shall furnish, upon demand, all information that may be required in connection with the District's obtaining the required insurance.

**ARTICLE 14. CONTINGENT FEE.** The Engineer warrants that it has not employed or retained any company or person, other than a bona fide employee working solely for the Engineer, to solicit or secure this Agreement and that it has not paid or agreed to pay any person, company, corporation, individual, or firm, other than a bona fide employee working solely for the Engineer, any fee, commission, percentage, gift, or other consideration contingent upon or resulting from the award or making of this Agreement.

**ARTICLE 15. AUDIT.** Records of the Engineer pertaining to the services provided hereunder shall be kept on a basis of generally accepted accounting principles and shall be available to the District or its authorized representative for observation or audit at mutually agreeable times. The Engineer agrees that the District or any of its duly authorized representatives shall have access to and

the right to examine any books, documents, papers, and records of the Engineer involving transactions related to the Agreement for a period of four (4) years or longer as required by law. The Engineer agrees that payment made under the Agreement shall be subject to reduction for amounts charged thereto that are found on the basis of audit examination not to constitute allowable costs. All required records shall be maintained until either (a) the completion of an audit and resolution of all questions arising therefrom, or (b) three years after the expenditure of all funds under this Agreement, or (c) the public record retention period established by the District's records retention policy, whichever comes later.

**ARTICLE 16. COMPLIANCE WITH GOVERNMENTAL REGULATIONS.** In performing its obligations under this Agreement, the Engineer and each of its agents, servants, employees, or anyone directly or indirectly employed by the Engineer, shall comply with all applicable laws, ordinances, rules, regulations, and orders of any public or governmental authority having appropriate jurisdiction. If the Engineer fails to notify the District in writing within five (5) days of the receipt of any notice, order, required to comply notice, or a report of a violation or an alleged violation, made by any local, State, or Federal governmental body or agency or subdivision thereof with respect to the services being rendered under this Agreement or any action of the Engineer or any of its agents, servants, or employees, or fails to comply with any requirement of such agency within five (5) days after receipt of any such notice, order request to comply notice, or report of a violation or an alleged violation, the District may terminate this Agreement, such termination to be effective upon the giving of notice of termination.

**ARTICLE 17. COMPLIANCE WITH PROFESSIONAL STANDARDS.** In performing its obligations under this Agreement, the Engineer and each of its agents, servants, employees, or anyone directly or indirectly employed by the Engineer, shall maintain the highest standard of care, skill, diligence, and professional competency for such work and/or services. Any designs, drawings, reports, or specifications prepared or furnished by the Engineer that contain errors, conflicts, or omissions will be promptly corrected by the Engineer at no cost to the District.

**ARTICLE 18. INDEMNIFICATION.** The Engineer agrees, to the fullest extent permitted by law, to indemnify, defend, and hold harmless the District and the District's officers, supervisors, agents, staff, and representatives (together, the "**Indemnitees**"), from liabilities, damages, losses, and costs, including, but not limited to, reasonable attorneys' fees, to the extent caused by the negligence, recklessness, or intentionally wrongful conduct of the Engineer and other persons employed or utilized by the Engineer in the performance of this Agreement, including without limitation the Engineer's contractors, subcontractors, and sub-subcontractors. To the extent a limitation on liability is required by Section 725.06, Florida Statutes or other applicable law, liability under this section shall in no event exceed the sum of Two Million Dollars and No Cents (\$2,000,000.00) and the Engineer shall carry, at his own expense, insurance in a company satisfactory to the District to cover the aforementioned liability. The Engineer agrees such limitation bears a reasonable commercial relationship to the Agreement and was part of the project specifications or bid documents. The Engineer agrees and covenants that nothing herein shall constitute or be construed as a waiver of the District's sovereign immunity pursuant to Section 768.28, *Florida Statutes*, or other law, and nothing in the Agreement shall inure to the benefit of any third party for the purpose of allowing any claim which would otherwise be barred under the Doctrine of Sovereign Immunity or by operation of law. In the event that any indemnification, defense, or hold harmless provision of this Agreement is determined to be unenforceable, the provision shall be reformed in accordance with the mutual intent of the Engineer and the District to provide indemnification, defense, and hold harmless provisions to the maximum effect allowed by Florida law and for the benefit of the Indemnitees.

**ARTICLE 19. EMPLOYMENT VERIFICATION.** The Engineer agrees that it shall bear the responsibility for verifying the employment status, under the Immigration Reform and Control Act of 1986, of all persons it employs in the performance of this Agreement.

**ARTICLE 20. INDEPENDENT CONTRACTOR.** In all matters relating to this Agreement, the District and the Engineer agree and acknowledge that the Engineer shall serve as an independent contractor of the District. Neither the Engineer nor employees of the Engineer, if any, are employees of the District under the meaning or application of any Federal or State unemployment, insurance laws, or any other potentially applicable laws. The Engineer agrees to assume all liabilities or obligations by any one or more of such laws with respect to employees of the Engineer, if any, in the performance of this Agreement. The Engineer shall not have any authority to assume or create any obligation, express or implied, on behalf of the District and the Engineer shall have no authority to represent as agent, employee, or in any other capacity the District, unless set forth differently herein or authorized by vote of the Board.

**ARTICLE 21. CONTROLLING LAW.** The Engineer and the District agree that this Agreement shall be controlled and governed by the laws of the State of Florida. Venue for all proceedings with respect to this Agreement shall be Collier County, Florida.

**ARTICLE 22. NOTICE.** Any notice provided by this Agreement to be served in writing upon either of the parties shall be deemed sufficient if hand delivered, sent by commercial overnight courier, or regular U.S. mail, to the authorized representative of the other party at the addresses below or to such other addresses as the parties hereto may hereafter designate in writing. Any such notice or demand shall be deemed to have been given or made as of the time of actual delivery, or, in the case of mailing, such notice shall be effective from the date the same is deposited in the mail with proper postage prepaid. The addresses for notice purposes are as follows:

**A. If to Engineer:**

\_\_\_\_\_  
Attn: \_\_\_\_\_  
\_\_\_\_\_, FL 3\_\_\_\_\_

**B. If to District:**

Wentworth Estates Community  
Development District  
c/o JPWard & Associates, LLC  
Attn: James P. Ward, District Manager  
2900 Northeast 12<sup>th</sup> Terrace, Suite 1  
Oakland Park, Florida 33334

**With a copy to:**

Coleman, Yovanovich & Koester, P.A.  
Attn: Gregory L. Urbancic, Esq.  
4001 Tamiami Trail N., Suite 300  
Naples, Florida 34103

Counsel for the District and counsel for the Engineer may deliver Notice on behalf of the District and the Engineer. Any party or other person to whom Notices are to be sent or copied may notify the other parties and addressees of any change in name or address to which Notices shall be sent by providing the same on five (5) days' written notice to the parties and addressees set forth herein.

**ARTICLE 23. PUBLIC RECORDS.** The Engineer understands and agrees that all documents of any kind provided to the District in connection with this Agreement may be public records, and, accordingly, the Engineer agrees to comply with all applicable provisions of Florida law in handling such records, including but not limited to Section 119.0701, Florida Statutes. The Engineer acknowledges that the designated public records custodian for the District is James P. Ward ("**Public Records Custodian**"). Among other requirements and to the extent applicable by law, the Engineer shall 1) keep and maintain public records required by the District to perform the Services; 2) upon request by the Public Records Custodian, provide the District with the requested public records or allow the records to be inspected or copied within a reasonable time period at a cost that does not exceed the cost provided in Chapter 119, Florida Statutes; 3) ensure that public records which are exempt or confidential, and exempt from public records disclosure requirements, are not disclosed except as authorized by law for the duration of the Agreement term and following the Agreement term if the Engineer does not transfer the records to the Public Records Custodian of the District; and 4) upon completion of the Agreement, transfer to the District, at no cost, all public records in the Engineer's possession or, alternatively, keep, maintain and meet all applicable requirements for retaining public records pursuant to Florida laws. When such public records are transferred by the Engineer, the Engineer shall destroy any duplicate public records that are exempt or confidential and exempt from public records disclosure requirements. All records stored electronically must be provided to the District in a format that is compatible with Microsoft Word or Adobe PDF formats. Failure of the Engineer to comply with Section 119.0701, Florida Statutes may subject the Engineer to penalties under Section 119.10, Florida Statutes. Further, in the event the Engineer fails to comply with this Section or Section 119.0701, Florida Statutes, the District shall be entitled to any and all remedies at law or in equity. The following statement is required to be included in this Contract pursuant to Section 119.0701(2), Florida Statutes:

**IF THE ENGINEER HAS QUESTIONS REGARDING THE APPLICATION OF CHAPTER 119, FLORIDA STATUTES, TO THE ENGINEER'S DUTY TO PROVIDE PUBLIC RECORDS RELATING TO THIS CONTRACT, CONTACT THE CUSTODIAN OF PUBLIC RECORDS AT (954) 658-4900, [JIMWARD@JPWARDASSOCIATES.COM](mailto:JIMWARD@JPWARDASSOCIATES.COM), 2900 NORTHEAST 12<sup>TH</sup> TERRACE, SUITE 1, OAKLAND PARK, FLORIDA 33334.**

**ARTICLE 24. NO THIRD PARTY BENEFITS.** Nothing in the Agreement shall inure to the benefit of any third party for the purpose of allowing any claim which would otherwise be barred by operation of law.

**ARTICLE 25. SEVERABILITY.** The invalidity or unenforceability of any one or more provisions of this Agreement shall not affect the validity or enforceability of the remaining portions of this Agreement, or any part of this Agreement not held to be invalid or unenforceable.

**ARTICLE 26. ASSIGNMENT.** Except as provided otherwise in this Agreement, neither the District nor the Engineer shall assign, sublet, or transfer any rights under or interest in this Agreement without the express written consent of the other. Any purported assignment without such written consent is void. Nothing in this paragraph shall prevent the Engineer from employing such independent professional associates and consultants as the Engineer deems appropriate and consistent with this Agreement.

**ARTICLE 27. AMENDMENT.** Amendments to and waivers of the provisions contained in this Agreement may be made only by an instrument in writing that is executed by both the District and the Engineer.

**ARTICLE 28. ARM'S LENGTH TRANSACTION.** This Agreement reflects the negotiated agreement of the District and the Engineer, each represented by competent legal counsel. Accordingly, this Agreement shall be construed as if both parties jointly prepared it, and no presumption against one party or the other shall govern the interpretation or construction of any of the provisions of this Agreement.

**ARTICLE 29. INDIVIDUAL LIABILITY. NOTWITHSTANDING ANYTHING TO THE CONTRARY HEREUNDER, UNDER THIS AGREEMENT, AND PURSUANT TO THE REQUIREMENTS OF SECTION 558.0035, FLORIDA STATUTES, THE REQUIREMENTS OF WHICH ARE EXPRESSLY INCORPORATED HEREIN, AN INDIVIDUAL EMPLOYEE OR AGENT OF THE ENGINEER MAY NOT BE HELD INDIVIDUALLY LIABLE FOR NEGLIGENCE.**

**ARTICLE 30. TERMINATION.** The District may terminate this Agreement for cause immediately upon notice to the Engineer. The District or the Engineer may terminate this Agreement without cause upon thirty (30) days written notice. At such time as the Engineer receives notification of the intent of the District to terminate the contract, the Engineer shall not perform any further services unless directed to do so in writing by the District. In the event of any termination or breach of any kind, the Engineer shall not be entitled to consequential damages of any kind (including but not limited to lost profits), but instead the Engineer's sole remedy will be to recover payment for services rendered to the date of the notice of termination, subject to any offsets.

**ARTICLE 31. HEADINGS FOR CONVENIENCE ONLY.** The descriptive headings in this Agreement are for convenience only and shall neither control nor affect the meaning or construction of any of the provisions of this Agreement.

**ARTICLE 32. ENFORCEMENT OF AGREEMENT.** In the event that either the District or the Engineer is required to enforce this Agreement by court proceedings or otherwise, then the prevailing party shall be entitled to recover from the other party all costs incurred, including reasonable attorney's fees and costs at all judicial levels.

**ARTICLE 33. ACCEPTANCE.** Acceptance of this Agreement is indicated by the signatures of the authorized representatives of the District and the Engineer in the spaces provided below.

**ARTICLE 34. COUNTERPARTS.** This instrument may be executed in any number of counterparts, each of which, when executed and delivered, shall constitute an original, and such

counterparts together shall constitute one and the same instrument. Signature and acknowledgment pages, if any, may be detached from the counterparts and attached to a single copy of this document to physically form one document.

*(Remainder of Page Intentionally Left Blank. Signatures appear on the following page)*

**IN WITNESS WHEREOF**, the parties hereto have caused this Agreement to be executed on the day and year first above written.

**Attest:**

**WENTWORTH ESTATES COMMUNITY  
DEVELOPMENT DISTRICT**

\_\_\_\_\_  
Assistant Secretary/Secretary

By: \_\_\_\_\_  
Chairman/Vice Chairman

Date: \_\_\_\_\_

\_\_\_\_\_,  
a Florida corporation

By: \_\_\_\_\_

Name: \_\_\_\_\_

Title: \_\_\_\_\_

Date: \_\_\_\_\_

**EXHIBIT A:** Schedule of Rates

**Exhibit A**  
Schedule of Rates





**Calvin, Giordano & Associates, Inc.**  
EXCEPTIONAL SOLUTIONS™

**Electronic**

## PROFESSIONAL ENGINEERING SERVICES

Prepared  
For: **Wentworth Estates Community Development District**  
ATTN: James P. Ward, District Manager  
2900 NE 12th Terrace  
Oakland Park, FL 33334

**Due Date/Time:**  
**November 1, 2017**  
**12:00pm**



***Wentworth Estates***  
***Community Development District***



**Calvin, Giordano & Associates, Inc.**  
EXCEPTIONAL SOLUTIONS™

## **WENTWORTH ESTATES COMMUNITY DEVELOPMENT DISTRICT DISTRICT ENGINEERING**

### **CALVIN, GIORDANO & ASSOCIATES, INC.**

1800 Eller Drive, Suite 600  
Fort Lauderdale, Florida 33316  
(954) 921-7781 (Office)  
(954) 921-8807 (Fax)

### **INDIVIDUAL AUTHORIZED TO MAKE REPRESENTATIONS FOR CALVIN, GIORDANO & ASSOCIATES, INC.**

#### **DENNIS GIORDANO**

*President*

dgiordano@cgasolutions.com  
1800 Eller Drive, Suite 600  
Fort Lauderdale, Florida 33316  
(954) 921-7781 (Office)  
(954) 921-8807 (Fax)

#### **PROJECT MANAGER**

#### **CURT KEYSER, PE**

*Director, Engineering*

ckeyser@cgasolutions.com  
1800 Eller Drive, Suite 600  
Fort Lauderdale, Florida 33316  
(954) 921-7781 (Office)  
(954) 921-8807 (Fax)



# TABLE OF CONTENTS

Table of Contents.....	2
Section 1 Letter of Interest .....	3
Section 2 Federal Standard Form 330.....	6



## SECTION 1 LETTER OF INTEREST

See the following pages for Letter of Interest



October 31, 2017

James P. Ward, District Manager  
Wentworth Estates Community Development District  
2900 NE 12<sup>th</sup> Terrace  
Oakland Park, FL 33334

**RE: Wentworth Estates Community Development District Request for Qualifications – District Engineer**

Dear Mr. Ward:

Calvin, Giordano & Associates, Inc. (CGA) is pleased to submit this Request for Proposal for Engineering Services for the Wentworth Estates Community Development District (Wentworth Estates CDD). We have reviewed the scope of services for this project and have selected a project team with the necessary skills to successfully complete all requested services.

The CGA team is comprised of industry experts with over 140 years of combined experience in their respective fields. Wentworth Estates CDD will benefit from this collaboration by leveraging the team's experience, lessons learned, and demonstrated best practices. Utilizing these resources, the CGA team can deliver a higher quality service that is tailored to the needs of Wentworth Estates CDD.

The CGA Team is a full-service organization with the ability to fully assist with all aspects of providing services to a Community Development District. On many occasions, we have executed the engineering functions associated with Community Development Districts. As such, we understand the scope and requirements of the Wentworth Estates Community Development District.

We are able to attend board meetings, meet with regulatory agencies, write and update the required annual reports, hold public hearings and work on technical advisory committees. CGA has acted and currently acts in the role of District Engineer and/or Director of Community Development for several of our clients, where we perform site plan reviews, coordinate and attend DRC meetings, and assist in the site plan process through District approval. Additionally, CGA has in-house staff capable of providing agency inspections and re-certifications as well as field assessments of vital infrastructure assets.

For over 80 years our firm has been providing consulting services to public and private clients throughout the State of Florida. Over the past 20 – 30 years we have specialized in consulting to municipal agencies. Today CGA provides multi-disciplinary consulting services to over 60 municipal clients throughout the State of Florida. We have extensive municipal experience serving as District Engineer and consultants to municipalities and drainage districts.

Building Code Services  
Civil Engineering / Roadway  
& Highway Design  
Coastal Engineering  
Code Enforcement  
Construction Engineering &  
Inspection (CEI)  
Construction Services  
Data Technologies &  
Development  
Electrical Engineering  
Engineering  
Environmental Services  
Facilities Management  
Geographic Information  
Systems (GIS)  
Governmental Services  
Indoor Air Quality  
Landscape Architecture  
Planning  
Project Management  
Redevelopment  
& Urban Design  
Surveying & Mapping  
Traffic Engineering  
Transportation Planning  
Water / Utilities Engineering  
Website Development

1800 Eller Drive  
Suite 600  
Fort Lauderdale, FL  
33316  
954.921.7781 phone  
954.921.8807 fax

[www.cgasolutions.com](http://www.cgasolutions.com)



Many of our clients have retained our municipal services for more than 30 years because we are committed to providing personalized attention and to meeting our clients' time and budgetary requirements. Our diverse experience and exposure to different professional perspectives has greatly enhanced our team's abilities to provide our municipal partners with innovative ideas, quality solutions, and technical strength in our roles as designers, reviewers, and agency liaisons.

With offices located in Fort Lauderdale, Estero, Clearwater/Tampa, Miami-Dade, West Palm Beach, and Port St. Lucie, we are conveniently located in close proximity to our clients. If selected, CGA's Ft. Lauderdale office, located at **1800 Eller Drive, Suite 600, Fort Lauderdale, FL**, will serve as the dedicated headquarters for this project.

Should Calvin, Giordano & Associates, Inc. be selected to provide services under this contract, I, Dennis Giordano, will serve as Principal-in-Charge and Curt Keyser, PE will serve as Project Manager and primary client contact for this contract. We can be reached by email at [dgiordano@cgasolutions.com](mailto:dgiordano@cgasolutions.com) or [ckeyser@cgasolutions.com](mailto:ckeyser@cgasolutions.com) or by telephone or fax at the numbers listed on this letterhead.

Thank you for providing us this opportunity to respond to this Request for Proposal.

Sincerely,

**CALVIN, GIORDANO & ASSOCIATES, INC.**



Dennis Giordano  
President



## SECTION 2 FEDERAL STANDARD FORM 330

See the following pages for Standard Form 330s

**STANDARD FORM 330  
ARCHITECT - ENGINEER QUALIFICATIONS**

**PART I - CONTRACT-SPECIFIC QUALIFICATIONS**

**A. CONTRACT INFORMATION**

1. TITLE AND LOCATION *(City and State)*

**WENTWORTH ESTATES COMMUNITY DEVELOPMENT DISTRICT - RFP DISTRICT ENGINEER**

2. PUBLIC NOTICE DATE

**OCTOBER 19, 2017**

3. SOLICITATION OR PROJECT NUMBER

**N/A**

**B. ARCHITECT-ENGINEER POINT OF CONTACT**

4. NAME AND TITLE

**Dennis Giordano, President**

5. NAME OF FIRM

**CALVIN, GIORDANO, & ASSOCIATES, INC.**

6. TELEPHONE NUMBER

**954-921-7781**

7. FAX NUMBER

**954-921-8807**

8. E-MAIL ADDRESS

**marketing@cgasolutions.com**

**C. PROPOSED TEAM**

*(Complete this section for the prime contractor and all key subcontractors.)*

<i>(Check)</i>			9. FIRM NAME	10. ADDRESS	11. ROLE IN THIS CONTRACT
PRIME	J-V PARTNER	SUBCONTRACTOR			
a.	X		Calvin, Giordano & Associates, Inc.  <input checked="" type="checkbox"/> CHECK IF BRANCH OFFICE	1800 Eller Drive Suite 600 Fort Lauderdale, FL 33316 T 954-921-7781	District Engineer
b.			<input type="checkbox"/> CHECK IF BRANCH OFFICE		
c.			<input type="checkbox"/> CHECK IF BRANCH OFFICE		
d.			<input type="checkbox"/> CHECK IF BRANCH OFFICE		
e.			<input type="checkbox"/> CHECK IF BRANCH OFFICE		
f.			<input type="checkbox"/> CHECK IF BRANCH OFFICE		



WENTWORTH ESTATES  
COMMUNITY  
DEVELOPMENT DISTRICT

PRINCIPAL-IN-CHARGE

Dennis Giordano

Calvin, Giordano & Associates, Inc.

PROJECT MANAGER

Curt Keyser, PE

Calvin, Giordano & Associates, Inc.

GENERAL CIVIL ENGINEERING

Karl Kennedy, PE  
Nicholas Mahon, PE  
Mohammed Sharifuzzaman, PE

Calvin, Giordano & Associates, Inc.

LANDSCAPE ARCHITECTURE

Tammy Cook-Wheedon, ASLA,  
LEED AP BD+C  
Bill Tesauro

Calvin, Giordano & Associates, Inc.

ENVIRONMENTAL

Sandra Lee, AICP, CEP,  
CFM, LEED AP BD+C

Calvin, Giordano & Associates, Inc.

ELECTRICAL ENGINEERING

Robert Roush, PE

Calvin, Giordano & Associates, Inc.

SURVEYING

Steve Watts, PSM

Calvin, Giordano & Associates, Inc.

CONSTRUCTION  
MANAGEMENT

Bob McSweeney, PE  
Bruce Bernard

Calvin, Giordano & Associates, Inc.

TRAFFIC ENGINEERING AND  
TRANSPORTATION PLANNING

Eric Czerniejewski, PE

Calvin, Giordano & Associates, Inc.

**E. RESUMES OF KEY PERSONNEL PROPOSED FOR THIS CONTRACT**

*(Complete one Section E for each key person.)*

12 NAME <b>CURT A. KEYSER, PE</b>	13 ROLE IN THIS CONTRACT <b>PROJECT MANGER/DISTRICT ENGINEER</b>	14. YEARSEXPERIENCE	
		a TOTAL <b>27</b>	b WITH CURRENT FIRM <b>5</b>

15 FIRM NAME AND LOCATION *(City and State)*  
**CALVIN, GIORDANO & ASSOCIATES, INC. – FORT LAUDERDALE, FLORIDA**

16 EDUCATION <i>(DEGREE AND SPECIALIZATION)</i> <b>BACHELOR OF SCIENCE IN MECHANICAL ENGINEERING VIRGINIA POLYTECHNIC INSTITUTE &amp; STATE UNIVERSITY</b>	17 CURRENT PROFESSIONAL REGISTRATION <i>(STATE AND DISCIPLINE)</i> <b>FLORIDA PE, NO. 51407</b>
---	---

18 OTHER PROFESSIONAL QUALIFICATIONS *(Publications, Organizations, Training, Awards, etc.)*

Mr. Keyser is a licensed Professional Engineer and a Certified Contractor in 5 categories in the State of Florida. He has 25 years of leadership, management, and engineering experience, including an extensive project management background that includes site development, utilities design, paving and drainage design, fuel systems design, ADA compliance upgrade design, and extensive knowledge of building and engineering code requirements.

**19. RELEVANT PROJECTS**

a.	(1) TITLE AND LOCATION <i>(City and State)</i> <b>City Engineer Services, Weston, FL</b>	(2) YEAR COMPLETED	
		PROFESSIONAL SERVICES <b>On-going</b>	CONSTRUCTION <i>(if applicable)</i>
	(3) BRIEF DESCRIPTION <i>(Brief scope, size, cost, etc.)</i> AND SPECIFIC ROLE <input type="checkbox"/> Check if project performed with current firm Oversee engineering plans review for both engineering permits and Development Review, capital projects budgeting, and maintenance and updating of engineering codes and standards.		
b.	(1) TITLE AND LOCATION <i>(City and State)</i> <b>Auxiliary City Engineer Services, Surfside, FL</b>	(2) YEAR COMPLETED	
		PROFESSIONAL SERVICES <b>On-going</b>	CONSTRUCTION <i>(if applicable)</i>
	(3) BRIEF DESCRIPTION <i>(Brief scope, size, cost, etc.)</i> AND SPECIFIC ROLE <input type="checkbox"/> Check if project performed with current firm Oversee engineering plans review for both engineering permits and Development Review; capital projects budgeting; and maintenance and updating of engineering codes and standards; grant identification, application and administration; operation and maintenance of water, wastewater and Stormwater utilities; provide associated regulatory monitoring and compliance services; and administer the Town's NPDES/Stormwater Master Plan programs		
c.	(1) TITLE AND LOCATION <i>(City and State)</i> <b>Public Works Fleet Fueling Facility, Weston, FL</b>	(2) YEAR COMPLETED	
		PROFESSIONAL SERVICES <b>2010</b>	CONSTRUCTION <i>(if applicable)</i> <b>2011</b>
	(3) BRIEF DESCRIPTION <i>(Brief scope, size, cost, etc.)</i> AND SPECIFIC ROLE <input type="checkbox"/> Check if project performed with current firm Project manager and Engineer of Record for design and permitting of a new fleet fueling facility, including (2) underground fuel tanks, piping, dispensers, concrete fuel island slab, steel canopy, and associated electrical service and manual transfer switch. Performed all mechanical and civil design and permitting. Professional Fees: \$20,000. Value of Construction: \$400,000		
d.	(1) TITLE AND LOCATION <i>(City and State)</i> <b>Public Works Fleet Fueling Facility, Sunrise, FL</b>	(2) YEAR COMPLETED	
		PROFESSIONAL SERVICES <b>2010</b>	CONSTRUCTION <i>(if applicable)</i> <b>2011</b>
	(3) BRIEF DESCRIPTION <i>(Brief scope, size, cost, etc.)</i> AND SPECIFIC ROLE <input type="checkbox"/> Check if project performed with current firm Project manager and Engineer of Record for design and permitting of a new fleet fueling facility, including (2) underground fuel tanks, piping, dispensers, concrete fuel island slab, steel canopy, and associated electrical service and manual transfer switch. Performed all mechanical and civil design and permitting. Professional fees: \$20,000. Value of Construction: \$400,000		
	(1) TITLE AND LOCATION <i>(City and State)</i> <b>Government Services Fleet Fueling Facility, Aventura, FL</b>	(2) YEAR COMPLETED	
		PROFESSIONAL SERVICES <b>2000</b>	CONSTRUCTION <i>(if applicable)</i> <b>2001</b>

e.	(3) BRIEF DESCRIPTION ( <i>Brief scope, size, cost, etc.</i> ) AND SPECIFIC ROLE Project manager and Engineer of Record for design and permitting of a new fleet fueling facility, including (1) underground fuel tank, piping, dispensers, concrete fuel island slab, steel canopy, and associated electrical service and manual transfer switch. Performed all mechanical and civil design and permitting. Professional fees: \$18,500. Value of Construction: \$375,000	Check if project performed with current firm	
f.	(1) TITLE AND LOCATION ( <i>City and State</i> ) <b>School Board of Broward County SW Bus Depot Fleet Fueling Facility and Bus Wash, Pembroke Pines, Florida</b>	(2) YEAR COMPLETED	
		PROFESSIONAL SERVICES 2008	CONSTRUCTION (if applicable) 2009
	(3) BRIEF DESCRIPTION ( <i>Brief scope, size, cost, etc.</i> ) AND SPECIFIC ROLE Project manager and Engineer of Record for design and permitting of a new fleet fueling facility, including (3) underground fuel tanks, piping, dispensers, concrete fuel island slab, steel canopy, and associated electrical service and manual transfer switch, and plumbing and electrical service associated with an automated Bus Wash. Performed all mechanical and civil design and permitting. Professional fees: \$58,000. Value of Construction: \$575,000	Check if project performed with current firm	
g.	(1) TITLE AND LOCATION ( <i>City and State</i> ) <b>Miami Jewish Home and Hospital for the Aged, Aboveground Fuel Storage Tank and Generator Piping, Miami, FL</b>	(2) YEAR COMPLETED	
		PROFESSIONAL SERVICES 2006	CONSTRUCTION (if applicable) 2006
	(3) BRIEF DESCRIPTION ( <i>Brief scope, size, cost, etc.</i> ) AND SPECIFIC ROLE Project manager and Engineer of Record for design and permitting of a new 4000 gallon aboveground fuel storage tank, associated piping, generator day tank, and associated fuel oil supply and return piping connection to permanent emergency generator. Performed all mechanical and civil design and permitting. Professional fees: \$12,500. Value of Construction: \$225,000	Check if project performed with current firm	
h.	(1) TITLE AND LOCATION ( <i>City and State</i> ) <b>Eagle Transport Lift Station and Force Main Installation Port Everglades, FL</b>	(2) YEAR COMPLETED	
		PROFESSIONAL SERVICES 2013	CONSTRUCTION (if applicable) 2014

	(3) BRIEF DESCRIPTION ( <i>Brief scope, size, cost, etc.</i> ) AND SPECIFIC ROLE <input checked="" type="checkbox"/> Check if project performed with current firm CGA Project Manager for abandonment of septic system and installation of new lift station with 2" diameter HDPE force main connected to existing 8" sanitary force main. Responsibilities included preparation of work scope, contract documents, and plans detailing mechanical, electrical, and site work design; securing of permits from Utilities Department, Health Department, and Building Department; coordination with sub-consultants and contractor; construction inspections and certifications; and final project delivery and close-out. CGA's fees: \$29,500. Value of Construction: \$135,000						
	<table border="1"> <tr> <td>(1) TITLE AND LOCATION (<i>City and State</i>) <b>Memorial West Hospital Same Day Surgery Center Parking Lot</b></td> <td colspan="2">(2) YEAR COMPLETED</td> </tr> <tr> <td></td> <td>PROFESSIONAL SERVICES 2013</td> <td>CONSTRUCTION (if applicable) 2014</td> </tr> </table>	(1) TITLE AND LOCATION ( <i>City and State</i> ) <b>Memorial West Hospital Same Day Surgery Center Parking Lot</b>	(2) YEAR COMPLETED			PROFESSIONAL SERVICES 2013	CONSTRUCTION (if applicable) 2014
(1) TITLE AND LOCATION ( <i>City and State</i> ) <b>Memorial West Hospital Same Day Surgery Center Parking Lot</b>	(2) YEAR COMPLETED						
	PROFESSIONAL SERVICES 2013	CONSTRUCTION (if applicable) 2014					
i.	(3) BRIEF DESCRIPTION ( <i>Brief scope, size, cost, etc.</i> ) AND SPECIFIC ROLE <input checked="" type="checkbox"/> Check if project performed with current firm Project manager and lead designer for a new parking lot and ADA upgrades to an existing, adjacent parking lot to accommodate patients and employees of the Same Day Surgical Center. Performed all civil design and coordinated all permitting activities. CGA's fees: \$58,985. Value of Construction: \$567,650.						
	<table border="1"> <tr> <td>(1) TITLE AND LOCATION (<i>City and State</i>) <b>Pines Boulevard Bus Stop, Pembroke Pines, Florida</b></td> <td colspan="2">(2) YEAR COMPLETED</td> </tr> <tr> <td></td> <td>PROFESSIONAL SERVICES 2000</td> <td>CONSTRUCTION (if applicable) 2001</td> </tr> </table>	(1) TITLE AND LOCATION ( <i>City and State</i> ) <b>Pines Boulevard Bus Stop, Pembroke Pines, Florida</b>	(2) YEAR COMPLETED			PROFESSIONAL SERVICES 2000	CONSTRUCTION (if applicable) 2001
(1) TITLE AND LOCATION ( <i>City and State</i> ) <b>Pines Boulevard Bus Stop, Pembroke Pines, Florida</b>	(2) YEAR COMPLETED						
	PROFESSIONAL SERVICES 2000	CONSTRUCTION (if applicable) 2001					
j.	(3) BRIEF DESCRIPTION ( <i>Brief scope, size, cost, etc.</i> ) AND SPECIFIC ROLE <input type="checkbox"/> Check if project performed with current firm Project manager and lead designer for Broward County Mass Transit Authority bus stop bay on north side of Pines Boulevard West of University Drive in connection with the redevelopment of the Mobil gas station on the northwest corner of that intersection. Responsible for design and permitting. Professional fees: \$5,000. Value of Construction:						
	<table border="1"> <tr> <td>(1) TITLE AND LOCATION (<i>City and State</i>) <b>Shell Access Road, Dania Beach, Florida</b></td> <td colspan="2">(2) YEAR COMPLETED</td> </tr> <tr> <td></td> <td>PROFESSIONAL SERVICES 1997</td> <td>CONSTRUCTION (if applicable) N/A</td> </tr> </table>	(1) TITLE AND LOCATION ( <i>City and State</i> ) <b>Shell Access Road, Dania Beach, Florida</b>	(2) YEAR COMPLETED			PROFESSIONAL SERVICES 1997	CONSTRUCTION (if applicable) N/A
(1) TITLE AND LOCATION ( <i>City and State</i> ) <b>Shell Access Road, Dania Beach, Florida</b>	(2) YEAR COMPLETED						
	PROFESSIONAL SERVICES 1997	CONSTRUCTION (if applicable) N/A					
k.	(3) BRIEF DESCRIPTION ( <i>Brief scope, size, cost, etc.</i> ) AND SPECIFIC ROLE <input type="checkbox"/> Check if project performed with current firm Project manager and lead designer for access road, and associated drainage, from Stirling Road to rear of proposed Shell gas station for future development of a hotel. Responsible for design and permitting. Professional fees: 39,500. Value of Construction: \$300,000.						
	<table border="1"> <tr> <td>(1) TITLE AND LOCATION (<i>City and State</i>) <b>Pines Mobil Turn Lane, Pembroke Pines, Florida</b></td> <td colspan="2">(2) YEAR COMPLETED</td> </tr> <tr> <td></td> <td>PROFESSIONAL SERVICES 2000</td> <td>CONSTRUCTION (if applicable) 2001</td> </tr> </table>	(1) TITLE AND LOCATION ( <i>City and State</i> ) <b>Pines Mobil Turn Lane, Pembroke Pines, Florida</b>	(2) YEAR COMPLETED			PROFESSIONAL SERVICES 2000	CONSTRUCTION (if applicable) 2001
(1) TITLE AND LOCATION ( <i>City and State</i> ) <b>Pines Mobil Turn Lane, Pembroke Pines, Florida</b>	(2) YEAR COMPLETED						
	PROFESSIONAL SERVICES 2000	CONSTRUCTION (if applicable) 2001					
l.	(3) BRIEF DESCRIPTION ( <i>Brief scope, size, cost, etc.</i> ) AND SPECIFIC ROLE <input type="checkbox"/> Check if project performed with current firm Project manager and lead designer for increased storage and taper at left turn lane from northbound University Drive to westbound Pines Boulevard in connection with the redevelopment of the Mobil gas station on the northwest corner of the intersection. Responsible for design and permitting. Professional fees: \$18,500. Value of Construction: \$120,000						
	<table border="1"> <tr> <td>(1) TITLE AND LOCATION (<i>City and State</i>) <b>Sewer Main Extension @ Miami Gardens Drive &amp; U.S.441</b></td> <td colspan="2">(2) YEAR COMPLETED</td> </tr> <tr> <td></td> <td>PROFESSIONAL SERVICES 2011</td> <td>CONSTRUCTION (if applicable) 2012</td> </tr> </table>	(1) TITLE AND LOCATION ( <i>City and State</i> ) <b>Sewer Main Extension @ Miami Gardens Drive &amp; U.S.441</b>	(2) YEAR COMPLETED			PROFESSIONAL SERVICES 2011	CONSTRUCTION (if applicable) 2012
(1) TITLE AND LOCATION ( <i>City and State</i> ) <b>Sewer Main Extension @ Miami Gardens Drive &amp; U.S.441</b>	(2) YEAR COMPLETED						
	PROFESSIONAL SERVICES 2011	CONSTRUCTION (if applicable) 2012					
k.	(3) BRIEF DESCRIPTION ( <i>Brief scope, size, cost, etc.</i> ) AND SPECIFIC ROLE <input type="checkbox"/> Check if project performed with current firm Project manager and Engineer of Record for 400 l.f. extension of an 8" diameter gravity sewer line in Miami Gardens Drive, including installation of a private o/w separator and connection of a commercial property to the public sewer. Performed all civil design and permitting. Professional fees: \$14,750. Value of Construction: \$115,000						

**E. RESUMES OF KEY PERSONNEL PROPOSED FOR THIS CONTRACT**

*(Complete one Section E for each key person.)*

12 NAME <b>KARL KENNEDY, PE</b>	13 ROLE IN THIS CONTRACT <b>PROJECT MANAGER</b>	14. YEARS EXPERIENCE	
		a TOTAL <b>32</b>	a TOTAL <b>20</b>

15 FIRM NAME AND LOCATION *(City and State)*  
**CALVIN, GIORDANO & ASSOCIATES, INC. – FORT LAUDERDALE, FLORIDA**

16 EDUCATION <i>(DEGREE AND SPECIALIZATION)</i> <b>MS, CHEMICAL ENGINEERING, W. VIRGINIA UNIVERSITY</b> <b>BS, CHEMICAL ENGINEERING, W. VIRGINIA UNIVERSITY</b>	17 CURRENT PROFESSIONAL REGISTRATION <i>(STATE AND DISCIPLINE)</i> <b>PE, FLORIDA, NO. 48838</b> <b>CERTIFIED QUALITY ENGINEER</b>
---	---

18 OTHER PROFESSIONAL QUALIFICATIONS *(Publications, Organizations, Training, Awards, etc.)*

Mr. Kennedy has 30 years of experience in civil and environmental engineering with a specialization in infrastructure design. He has experience in the design of civil engineering projects including wastewater and water treatment plant processes, land development design, wastewater collection system, and wastewater force main projects. He has served as a contract City Engineer performing engineering reviews for Development Review Committees as well as for Engineering Permit issuance. He has prepared capital improvement plans, prepared engineering reports for bond issuances as well as prepared applications for grants. Mr. Kennedy is also experienced in preparing capacity analysis reports, risk management plans and vulnerability assessments. He has prepared utility studies and master plans for utility systems. Mr. Kennedy has worked extensively with permitting agencies including various municipalities, County Planning, Environmental and Health Protection departments, Florida Department of Environmental Protection, and the U.S. Environmental Protection Agency. He also has considerable construction management experience.

**19. RELEVANT PROJECTS**

	(1) TITLE AND LOCATION <i>(City and State)</i>	(2) YEAR COMPLETED	
		PROFESSIONAL SERVICES	CONSTRUCTION (if applicable)
a.	<b>10-Year Water Supply Facilities Work Plan</b> <b>Davie, Florida</b>	2015	N/A
	(3) BRIEF DESCRIPTION <i>(Brief scope, size, cost, etc.)</i> AND SPECIFIC ROLE <input checked="" type="checkbox"/> Check if project performed with current firm Project Manager who reviewed the Lower East Coast Water Supply Plan (LECWSP) for any engineering related issues relevant to the Town of Davie. Prepare the amended Long Term Water Supply Plan and Comprehensive Plan Elements to ensure any relevant engineering issues have been adequately addressed. Perform data collection and water supply calculations as necessary to develop the Plan. Project engineering cost \$20,000		
b.	<b>RICE NESHAP Rule Compliance</b> <b>Boca Raton, Florida</b>	2015	Not started
	(3) BRIEF DESCRIPTION <i>(Brief scope, size, cost, etc.)</i> AND SPECIFIC ROLE <input checked="" type="checkbox"/> Check if project performed with current firm Project Manager is for engineering and bidding services for modification to the diesel engines utilities by the City of Boca Raton Utility and Municipal Services Departments for compliance with the new standards for Reciprocating Internal Combustion Engines (RICE) National Emission Standard for Hazardous Air Pollutants (NESHAP). Prepare construction plans and technical specifications for emergency generators, assist the CITY in obtaining competitive bids from contractors and perform construction observation. Project engineering costs \$150,000.		
c.	<b>Water Improvements Design at WTP #3</b> <b>Palm Beach County, Florida</b>	2015	2015
	(3) BRIEF DESCRIPTION <i>(Brief scope, size, cost, etc.)</i> AND SPECIFIC ROLE <input checked="" type="checkbox"/> Check if project performed with current firm Project manager for design, construction, testing, and startup for degassifier no. 3 and odor scrubber for clearwell no. 1 including air inlet filters in the blowers housing for degassifiers no. 1 and 2. Demolition of existing inlet filter box and piping for degassifiers no. 1 and 2 which is necessary for installation of degassifier no. 3. While minimizing plant shut down (only one blower and degassifier to be off -line) and install degassifier no. 3 with blower as a complete working system. Project engineering cost is \$143,000.		
d.	<b>Alternative Water Source</b> <b>Pembroke Pines, Florida</b>	2013	N/A
	(3) BRIEF DESCRIPTION <i>(Brief scope, size, cost, etc.)</i> AND SPECIFIC ROLE <input type="checkbox"/> Check if project performed with current firm		

	(3) BRIEF DESCRIPTION ( <i>Brief scope, size, cost, etc.</i> ) AND SPECIFIC ROLE <input checked="" type="checkbox"/> Check if project performed with current firm Modifying the existing WWTP for aquifer recharge and reuse design to gain CUP credits and meet existing WWTP permit requirements. Prepared the Pilot Study Protocol and Performance Study. The Pilot Plant study of new treatment equipment includes: Pilot plant and study design, approval of Study by Florida Department of Environmental Protection (DEP), pilot plant study(6 months operation) including analytical testing. Provided Treatment Plant Design and prepared the Design Build Documents including the Basis of Design Report (BODR). The final BODR included: construction cost estimate, process design of new equipment, sizing of new equipment and piping, and siting of equipment. Project Engineering cost \$2,930,000 including pilot study and equipment.	
e.	(1) TITLE AND LOCATION ( <i>City and State</i> ) <b>City Engineer</b> <b>City of Pembroke Pines, Florida</b>	(2) YEAR COMPLETED PROFESSIONAL SERVICES 2013-Ongoing
	(3) BRIEF DESCRIPTION ( <i>Brief scope, size, cost, etc.</i> ) AND SPECIFIC ROLE Check if project performed with current firm City Engineer for City of Pembroke Pines.	
f.	(1) TITLE AND LOCATION ( <i>City and State</i> ) <b>City Engineer</b> <b>City of Weston, Florida</b>	(2) YEAR COMPLETED PROFESSIONAL SERVICES 2000-Ongoing
	(3) BRIEF DESCRIPTION ( <i>Brief scope, size, cost, etc.</i> ) AND SPECIFIC ROLE Check if project performed with current firm City Engineer for City of Weston	
f.	(1) TITLE AND LOCATION ( <i>City and State</i> ) <b>District Engineer</b>	(2) YEAR COMPLETED PROFESSIONAL SERVICES 2000-Ongoing
	(3) BRIEF DESCRIPTION ( <i>Brief scope, size, cost, etc.</i> ) AND SPECIFIC ROLE Check if project performed with current firm District Engineer for Indian Trace Development District and Bonaventure Development District	

**E. RESUMES OF KEY PERSONNEL PROPOSED FOR THIS CONTRACT**

*(Complete one Section E for each key person.)*

12 NAME <b>NICHOLAS B. MAHON, PE</b>	13 ROLE IN THIS CONTRACT <b>ENGINEERING SUPPORT</b>	14. YEARSEXPERIENCE	
		a TOTAL <b>10 YEARS</b>	b WITH CURRENT FIRM <b>1 YEAR 10 MONTH</b>

15 FIRM NAME AND LOCATION *(City and State)*  
**CALVIN, GIORDANO & ASSOCIATES, INC. – FORT LAUDERDALE, FLORIDA**

16 EDUCATION <i>(DEGREE AND SPECIALIZATION)</i> <b>BACHELOR OF SCIENCE CIVIL ENGINEERING UNIVERSITY OF CENTRAL FLORIDA</b>	17 CURRENT PROFESSIONAL REGISTRATION <i>(STATE AND DISCIPLINE)</i> <b>REGISTERED PROFESSIONAL ENGINEER FL NO. PE78361</b>
---	---

18 OTHER PROFESSIONAL QUALIFICATIONS *(Publications, Organizations, Training, Awards, etc.)*

Mr. Mahon’s experience includes working on multi-disciplinary, design-bid, and design-bid-build. Design experience includes roadway design, land development, general site design, ADA accessibility, stormwater management, water and wastewater improvements, comprehensive master plans and investigations of storm and sanitary systems.

In addition, Mr. Mahon has performed Site Plan Reviews for the City of Weston, City of West Park, Town of Surfside, City of Pembroke Pines, and Village of Estero.

**19. RELEVANT PROJECTS**

a.	(1) TITLE AND LOCATION <i>(City and State)</i> <b>Site Plans Reviews</b>	(5) YEAR COMPLETED	
		PROFESSIONAL SERVICES <b>2014 – present</b>	CONSTRUCTION (if applicable) <b>N/A</b>
	(3) BRIEF DESCRIPTION <i>(Briefscope, size, cost, etc.)</i> AND SPECIFIC ROLE Check if project performed with current firm Perform Site Plan reviews for Engineering and attend DRC meeting for various municipalities, such as, City of Weston, City of West Park, Town of Surfside, City of Pembroke Pines, City of Sunny Isles Beach and Village of Estero.		
b.	(1) TITLE AND LOCATION <i>(City and State)</i> <b>Davie Road Phase 1 Davie, FL</b>	(5) YEAR COMPLETED	
		PROFESSIONAL SERVICES <b>2014</b>	CONSTRUCTION (if applicable) <b>2015 - 2016</b>
	(3) BRIEF DESCRIPTION <i>(Briefscope, size, cost, etc.)</i> AND SPECIFIC ROLE Check if project performed with current firm Project Engineer & Manager for the design and permitting of a 6 lane divided road with bike lanes for Davie Road Phase 1 from SR 84 to Nova Drive. Design included roadway widening, grading and drainage, sidewalks, signing and pavement marking plans and MOT. Coordinated with other disciplines for Signalization, lighting, and tree removal/relocations.		
c.	(1) TITLE AND LOCATION <i>(City and State)</i> <b>Davie Road Phase 2 Davie, FL</b>	(5) YEAR COMPLETED	
		PROFESSIONAL SERVICES <b>2014 - present</b>	CONSTRUCTION (if applicable) <b>N/A</b>
	(3) BRIEF DESCRIPTION <i>(Briefscope, size, cost, etc.)</i> AND SPECIFIC ROLE Check if project performed with current firm Project Manager & Engineer of Record for the design and permitting of a 4 lane divided road with bike lanes for Davie Road Phase 2 from SW 39 <sup>th</sup> Street to Nova Drive. Design included widening of sidewalks, grading, signing and pavement marking plans and MOT. Coordinated with other disciplines for Signalization, lighting, and tree removal/relocations. Prepare and submit documents to comply with FDOT Local Agency Program (LAP) Funding requirements.		
d.	(1) TITLE AND LOCATION <i>(City and State)</i> <b>Dania Jai-Alai &amp; Casino Offsite Improvements Dania Beach, FL</b>	(5) YEAR COMPLETED	
		PROFESSIONAL SERVICES <b>2014 - 2015</b>	CONSTRUCTION (if applicable) <b>2015</b>
	(3) BRIEF DESCRIPTION <i>(Briefscope, size, cost, etc.)</i> AND SPECIFIC ROLE Check if project performed with current firm Project Manager & Engineer of Record for design of a 3 lane divided road for Fronton Boulevard from Dania Beach Boulevard to NE 2 <sup>nd</sup> Street. Design included roadway widening, signing and pavement marking plans, grading and drainage modifications.		

e.	(1) TITLE AND LOCATION ( <i>City and State</i> ) <b>Andrews Avenue Roadway Improvements Oakland Park, VA</b>	(5) YEAR COMPLETED	
		PROFESSIONAL SERVICES 2016 - present	CONSTRUCTION (if applicable) N/A
	(3) BRIEF DESCRIPTION ( <i>Brief scope, size, cost, etc.</i> ) AND SPECIFIC ROLE <input type="checkbox"/> Check if project performed with current firm Project Manager & Engineer of Record for the design and permitting of a 4 lane divided road with bike lanes for Andrew Avenue from Oakland Park Blvd to Prospect Drive. Design included reconstruction of sidewalks to meet current ADA standards, drainage modifications, grading, signing and pavement marking plans and MOT. Coordinated with other disciplines for Pedestrian Study, lighting, and Landscaping. Prepare and submit documents to comply with FDOT Local Agency Program (LAP) Funding requirements.		
f.	(1) TITLE AND LOCATION ( <i>City and State</i> ) <b>Site Plans Reviews</b>	(5) YEAR COMPLETED	
		PROFESSIONAL SERVICES 2014 - present	CONSTRUCTION (if applicable) N/A
	(3) BRIEF DESCRIPTION ( <i>Brief scope, size, cost, etc.</i> ) AND SPECIFIC ROLE <input type="checkbox"/> Check if project performed with current firm Perform Site Plan reviews for Engineering and attend DRC meeting for various municipalities, such as, City of Weston, City of West Park, Town of Surfside, City of Pembroke Pines, City of Sunny Isles Beach and Village of Estero.		
g.	(1) TITLE AND LOCATION ( <i>City and State</i> ) <b>Mill Street Roadway Improvements, Town of Vienna, Virginia</b>	(5) YEAR COMPLETED	
		PROFESSIONAL SERVICES 2013	CONSTRUCTION (if applicable) N/A
	(3) BRIEF DESCRIPTION ( <i>Brief scope, size, cost, etc.</i> ) AND SPECIFIC ROLE <input type="checkbox"/> Check if project performed with current firm Engineer for the design of site plans for the design-bid-build project for a 53,000 square foot roadway improvements project. Roadway improvements included 53,000 square foot removal and replacement of the pavement section and 800 linear feet ADA sidewalk.		
h.	(1) TITLE AND LOCATION ( <i>City and State</i> ) <b>Northern Virginia Community College Lake Dr. Reconstruction Annandale, VA</b>	(5) YEAR COMPLETED	
		PROFESSIONAL SERVICES 2013 - 2014	CONSTRUCTION (if applicable) N/A
	(3) BRIEF DESCRIPTION ( <i>Brief scope, size, cost, etc.</i> ) AND SPECIFIC ROLE <input type="checkbox"/> Check if project performed with current firm Project Engineer for the design of a 1,000-linear foot road on the Northern Virginia Community College Annandale Campus. Design included roadway reconstruction, pavement markings and ADA upgrades.		



**E. RESUMES OF KEY PERSONNEL PROPOSED FOR THIS CONTRACT**

*(Complete one Section E for each key person.)*

12 NAME <b>MOHAMMED SHARIFUZZAMAN, PE</b>	13 ROLE IN THIS CONTRACT <b>HYDROLOGY AND HYDRAULIC ENGINEER</b>	14. YEARS EXPERIENCE	
		a TOTAL <b>13</b>	b WITH CURRENT FIRM <b>4</b>
15 FIRM NAME AND LOCATION <i>(City and State)</i> <b>CALVIN, GIORDANO &amp; ASSOCIATES, INC. – FORT LAUDERDALE, FLORIDA</b>			
16 EDUCATION <i>(DEGREE AND SPECIALIZATION)</i> <b>M.E., CIVIL ENG., LAMAR UNIVERSITY, BEAUMONT, TX, 2000</b> <b>B.S., CIVIL ENGINEERING, BANGLADESH UNIVERSITY OF ENGINEERING &amp; TECHNOLOGY, BANGLADESH, 1997</b>		17 CURRENT PROFESSIONAL REGISTRATION <i>(STATE AND DISCIPLINE)</i> <b>PE, STATE OF FLORIDA, NO. 67640</b>	

18 OTHER PROFESSIONAL QUALIFICATIONS *(Publications, Organizations, Training, Awards, etc.)*

Mr. Sharifuzzaman has more than 13 years of professional experience in civil, environmental, and transportation engineering with specialization in hydraulics and hydrologic modeling (H&H), surface water management system design, drainage basin/watershed modeling and floodplain analysis, master drainage study, conceptual/master surface water management system design, stormwater pump station design, stormwater retrofit projects, nutrient loading analysis (TMDL calculations), Stormwater Treatment Area (STA) design, FDOT roadway drainage design, and bridge hydraulics. His extensive experience includes land development projects including commercial/residential/institutional/DRI projects, roadway projects including new construction, widening and reconstruction, RRR and safety improvement projects, and PD&E study. Mr. Sharifuzzaman has worked extensively with permitting agencies including the South Florida Water Management District (SFWMD), the Florida Department of Environmental Protection (FDEP), the Florida Department of Transportation (FDOT), U.S. Army Corps of Engineers (USACE), various municipalities, and counties. His trusted reputation with the permitting agencies has produced a long list of successful and profitable projects. His extensive experience with construction, and thorough knowledge of codes and regulations as they apply to each development, is an asset for any project.

**19. RELEVANT PROJECTS**

a.	(1) TITLE AND LOCATION <i>(City and State)</i> <b>Site Plan Review</b> <b>City of Weston, Florida</b>	(2) YEAR COMPLETED	
		PROFESSIONAL SERVICES <b>2013- Ongoing</b>	CONSTRUCTION <i>(if applicable)</i>
	(3) BRIEF DESCRIPTION <i>(Brief scope, size, cost, etc.)</i> AND SPECIFIC ROLE <input checked="" type="checkbox"/> Check if project performed with current firm Currently responsible for review of Site Plans, Engineering Plans, Engineering design documents for various projects in the City of Weston as part of City of Weston development & permitting review process.		
b.	(1) TITLE AND LOCATION <i>(City and State)</i> <b>Flamingo Gardens Master Drainage Study</b> <b>Cooper City, Florida</b>	(2) YEAR COMPLETED	
		PROFESSIONAL SERVICES <b>2014</b>	CONSTRUCTION <i>(if applicable)</i> <b>2014</b>
	(3) BRIEF DESCRIPTION <i>(Brief scope, size, cost, etc.)</i> AND SPECIFIC ROLE <input checked="" type="checkbox"/> Check if project performed with current firm Modeling of 135-acre Flamingo Gardens Master Drainage Basin to determine the potential cause of neighborhood flooding and determination of the most feasible drainage improvements to minimize future flooding. Performed drainage analysis, calculations, modeling, alternative improvements and cost/benefit analysis.		
c.	(1) TITLE AND LOCATION <i>(City and State)</i> <b>Bid Pack No. 9 Infrastructure Improvements Project</b> <b>City of Oakland Park</b>	(2) YEAR COMPLETED	
		PROFESSIONAL SERVICES <b>2013</b>	CONSTRUCTION <i>(if applicable)</i> <b>IN CONSTRUCTION</b>
	(3) BRIEF DESCRIPTION <i>(Brief scope, size, cost, etc.)</i> AND SPECIFIC ROLE <input checked="" type="checkbox"/> Check if project performed with current firm Cherry Creek watershed modeling, design and permitting for proposed drainage improvements within the coral lakes subdivision of the City of Oakland Park. Performed drainage calculations, modeling, drainage plans and specifications developments, ERP permitting.		
d.	(1) TITLE AND LOCATION <i>(City and State)</i> <b>City of Weston Drainage Improvements Project</b> <b>City of Weston</b>	(2) YEAR COMPLETED	
		PROFESSIONAL SERVICES <b>2013</b>	CONSTRUCTION <i>(if applicable)</i> <b>2015</b>
	(3) BRIEF DESCRIPTION <i>(Brief scope, size, cost, etc.)</i> AND SPECIFIC ROLE <input checked="" type="checkbox"/> Check if project performed with current firm Schaffer canal drainage basin/Watershed modeling, design and permitting of innovative surface water management systems consisting of pump stations and pressurized injection wells. Performed drainage design, analysis and modeling.		

e.	(1) TITLE AND LOCATION ( <i>City and State</i> ) <b>Lloyd Estates Drainage Study</b> <b>City of Oakland Park, Florida</b>	(2) YEAR COMPLETED	
		PROFESSIONAL SERVICES 2012	CONSTRUCTION (if applicable) 2012
	(3) BRIEF DESCRIPTION ( <i>Brief scope, size, cost, etc.</i> ) AND SPECIFIC ROLE <input checked="" type="checkbox"/> Check if project performed with current firm H&H study for the Lloyd Estates drainage basin seeking FEMA grants, conceptual design for a pump station across Sleepy River discharging into the SFWMD C-13 canal. Performed drainage analysis and modeling.		
f.	(1) TITLE AND LOCATION ( <i>City and State</i> ) <b>Bonaventure Development District Drainage Improvements</b> <b>City of Weston, Florida</b>	(2) YEAR COMPLETED	
		PROFESSIONAL SERVICES 2012	CONSTRUCTION (if applicable) Present
	(3) BRIEF DESCRIPTION ( <i>Brief scope, size, cost, etc.</i> ) AND SPECIFIC ROLE <input checked="" type="checkbox"/> Check if project performed with current firm Responsible for drainage design within completely built-out 1237-acre Bonaventure Development District, surface water modeling, design, permitting, and CEI services for drainage improvements. The project scope included modification to existing conveyance systems, exfiltration trench, new storm drainage network, and upsizing existing lake interconnect culverts.		

**E. RESUMES OF KEY PERSONNEL PROPOSED FOR THIS CONTRACT**

*(Complete one Section E for each key person.)*

12 NAME <b>TAMMY COOK-WEEDON, ASLA, RLA, LEED AP</b>	13 ROLE IN THIS CONTRACT <b>LANDSCAPE ARCHTECT</b>	14. YEAREXPERIENCE	
		a TOTAL <b>31</b>	b WITH CURRENT FIRM <b>20</b>

15 FIRM NAME AND LOCATION *(City and State)*  
**CALVIN, GIORDANO & ASSOCIATES, INC. – FORT LAUDERDALE, FLORIDA**

16 EDUCATION <i>(DEGREE AND SPECIALIZATION)</i> <b>B.S. LANDSCAPE ARCHITECTURE, TEXAS A&amp;M UNIVERSITY COLLEGE STATION, 1987</b>	17 CURRENT PROFESSIONAL REGISTRATION <i>(STATE AND DISCIPLINE)</i> <b>REGISTERED PROFESSIONAL LANDSCAPE ARCHITECT, FLORIDA NO. 0001328</b>
---	--

18 OTHER PROFESSIONAL QUALIFICATIONS *(Publications, Organizations, Training, Awards, etc.)*

Ms. Cook-Weedon leads the Landscape Architectural staff, has over 30 years of landscape architectural experience with demonstrated strengths in creative design, graphic presentations, and planting design. She has successfully completed numerous large-scale projects, which encompassed design studies, planting designs, natural area development and the various inter-related professions and tasks necessary to manage the projects through to completion. Ms. Cook-Weedon manages a staff of eleven at CGA where she provides scheduling, addresses CAD staffing and directs design issues as well as monitors budgets and serves on the Executive Management team.

**19. RELEVANT PROJECTS**

a.	(1) TITLE AND LOCATION <i>(City and State)</i> <b>Miromar Lakes Community Development District Estero, Florida</b>	(2) YEAR COMPLETED ONGOING	
		PROFESSIONAL SERVICES Landscape Architecture	CONSTRUCTION (if applicable)
	(3) BRIEF DESCRIPTION <i>(Briefscope, size, cost, etc.)</i> AND SPECIFIC ROLE Provide landscape renovations and restoration plans.	Check if project performed with current firm	
b.	(1) TITLE AND LOCATION <i>(City and State)</i> <b>Pineapple Grove Parking Lot Delray Beach, Florida.</b>	(2) YEAR COMPLETED 2009	
		PROFESSIONAL SERVICES Survey, LA, Civil & Electrical Engineering, Construction Administration	CONSTRUCTION (if applicable) \$134,000.00
	(3) BRIEF DESCRIPTION <i>(Briefscope, size, cost, etc.)</i> AND SPECIFIC ROLE Landscape Architect: Ms. Cook-Weedon was involved in the design and permitting of a 14-space parking lot in the Pineapple Grove Art District featuring pervious paver parking and pedestrian surfaces for the City of Delray Beach CRA.	Check if project performed with current firm	
c.	(1) TITLE AND LOCATION <i>(City and State)</i> <b>SW 5th Avenue, Delray Beach, Florida</b>	(2) YEAR COMPLETED 2009	
		PROFESSIONAL SERVICES Survey, LA, Civil & Electrical Engineering, Construction Administration	CONSTRUCTION (if applicable) \$138,000.00
	(3) BRIEF DESCRIPTION <i>(Briefscope, size, cost, etc.)</i> AND SPECIFIC ROLE Ms. Cook-Weedon served as project manager for this project, which involved the design of a new public parking lot between SW 5 <sup>th</sup> Avenue and SW 4 <sup>th</sup> Avenue. The parking lots are enhanced by native trees and shrubs and carpeted by pervious pavers. The design reduces pollution, energy costs and emission of greenhouse gases. The 24-space lot is a green design, consisting of pervious pavers, decorative LED lighting and low-volume irrigation.	Check if project performed with current firm	

d.	(1) TITLE AND LOCATION ( <i>City and State</i> ) <b>SW 9th Avenue and 1st Street Delray Beach, Florida</b>	(2) YEAR COMPLETED 2014	
		PROFESSIONAL SERVICES Survey, LA, Civil & Electrical Engineering, Construction Administration	CONSTRUCTION (if applicable) \$400,000.00
(3) BRIEF DESCRIPTION ( <i>Brief scope, size, cost, etc.</i> ) AND SPECIFIC ROLE Check if project performed with current firm This site will serve as a public parking for the local neighborhood and provide a pocket park. The 44-space lot is a green design, consisting of pervious pavers, decorative LED lighting and low-volume irrigation. The site provides a tot lot for the local community and includes both adult fitness equipment and children's play equipment. The design includes trash receptacles and a bike rack.			
e.	(1) TITLE AND LOCATION ( <i>City and State</i> ) <b>Delray Beach Fire Rescue Headquarters Plaza Delray Beach, Florida</b>	(2) YEAR COMPLETED 2015	
		PROFESSIONAL SERVICES Survey, LA, Civil & Electrical Engineering Construction Administration,	CONSTRUCTION (if applicable) \$800,000.00
(3) BRIEF DESCRIPTION ( <i>Brief scope, size, cost, etc.</i> ) AND SPECIFIC ROLE Check if project performed with current firm Senior Landscape Architect. Designing and permitting improvements to pedestrian at the SE corner of the Fire Rescues Headquarters Building for the City of Delray Beach and the CRA. Project includes on the creation of a pedestrian plaza which will feature public art. A detention area will be resized to accommodate the plaza requiring the creation of retaining and seat wall to replace the lost water quality volume. Ms. Cook-Weedon provided assistant during the project construction. She addressed shop drawing reviews, RFI's and provided frequent site visits to address issues with the contractor.			
f.	(1) TITLE AND LOCATION ( <i>City and State</i> ) <b>Kane Concourse Beautification Bay Harbor Islands, FL</b>	(2) YEAR COMPLETED 2010	
		PROFESSIONAL SERVICES Survey, LA, Civil & Electrical Engineering, Construction Administration	CONSTRUCTION (if applicable) \$700,000.00
(3) BRIEF DESCRIPTION ( <i>Brief scope, size, cost, etc.</i> ) AND SPECIFIC ROLE Check if project performed with current firm Landscape Architect: Responsible for the oversight of hardscape and planting of streetscape improvements for the Town's business district, including, street furnishings, wayfinding, and irrigation.			
g.	(1) TITLE AND LOCATION ( <i>City and State</i> ) <b>Deering Estate at Old Cutler Palmetto Bay, Florida</b>	(2) YEAR COMPLETED 2003	
		PROFESSIONAL SERVICES Landscape Architecture	CONSTRUCTION (if applicable) \$2.8 million
(3) BRIEF DESCRIPTION ( <i>Brief scope, size, cost, etc.</i> ) AND SPECIFIC ROLE Check if project performed with current firm Historical restoration and landscape design to repair the damaged areas of the estate following Hurricane Andrews devastation of the property, including detailed archeological planting design, habitat restoration and planting design for a new visitors' facility.			
h.	(1) TITLE AND LOCATION ( <i>City and State</i> ) <b>Hickory Point Recreational Facilities Tavares, Florida</b>	(2) YEAR COMPLETED 1992	
		PROFESSIONAL SERVICES Landscape Architecture	CONSTRUCTION (if applicable) \$2.5 million
(3) BRIEF DESCRIPTION ( <i>Brief scope, size, cost, etc.</i> ) AND SPECIFIC ROLE Check if project performed with current firm Landscape Architect. The project consisted of the site design of a waterfront park that included marinas, boat ramps, wetland educational boardwalks, environmental signage, fishing stations and a communal pavilion.			
i.	(1) TITLE AND LOCATION ( <i>City and State</i> ) <b>Joe DiMaggio Children's Hospital Visitor's Clubhouse Hollywood, Florida</b>	(2) YEAR COMPLETED 1995	
		PROFESSIONAL SERVICES Landscape Architecture, Civil Engineering	CONSTRUCTION (if applicable) \$2.5 Million
(3) BRIEF DESCRIPTION ( <i>Brief scope, size, cost, etc.</i> ) AND SPECIFIC ROLE Check if project performed with current firm Prepared the site and landscape design for a restorative garden with a playground area specifically for the use by children users of the Joe DiMaggio facility.			

**E. RESUMES OF KEY PERSONNEL PROPOSED FOR THIS CONTRACT**

*(Complete one Section E for each key person.)*

12. NAME <b>BILL TESAURO</b>	13. ROLE IN THIS CONTRACT <b>LANDSCAPE REVIEWER</b>	14. YEARS EXPERIENCE	
		a. TOTAL <b>30</b>	b. WITH CURRENT FIRM <b>19</b>

15. FIRM NAME AND LOCATION (City and State)  
**CALVIN, GIORDANO & ASSOCIATES, INC. – FORT LAUDERDALE, FLORIDA**

16. EDUCATION (DEGREE AND SPECIALIZATION)	17. CURRENT PROFESSIONAL REGISTRATION (STATE AND DISCIPLINE)
<ul style="list-style-type: none"> <li>Broward County College, AS, Landscape Technology</li> </ul>	<ul style="list-style-type: none"> <li>Landscape Inspectors of Florida Certified Landscape Inspector #125 and Past Board Member</li> </ul>

18. OTHER PROFESSIONAL QUALIFICATIONS (Publications, Organizations, Training, Awards, etc.)  
Mr. Tesauro utilizes his 19 years of valuable management and professional experience gained from the City of Hollywood for his current position. During his 13 years in the Forestry Landscape Department he was responsible for the operation and administration of all employees engaged in landscape, irrigation, urban forestry, grounds maintenance, tree maintenance, athletic fields, turf management and the operation of a city nursery. Along with this experience, he has over 6 years as a Site Planner in the Community Development Department. There he increased his professional and technical knowledge and had direct responsibility for DRC reviews, tree preservation, inspections, and landscape and tree preservation codes writing. Including but not limited to other duties included obtaining grants, speaking engagements, writing numerous articles on landscaping, developing educational programs/materials, presenting educational programs, Arbor Day ceremonies, resolving zoning complaints and coordinating all other zoning landscape related matters.

**19. RELEVANT PROJECTS**

	(1) TITLE AND LOCATION (City and State)	(2) YEAR COMPLETED	
		PROFESSIONAL SERVICES	CONSTRUCTION (If Applicable)
a	<b>Public Sector - City of Hollywood</b>	ONGOING	
	(3) BRIEF DESCRIPTION (Briefscope, size, cost, etc.) AND SPECIFIC ROLE Inspections: Mr. Tesauro provides or has provided inspection supervision		<input checked="" type="checkbox"/> Check if project performed with current firm
b	<b>Public Sector - City of Weston</b>	ONGOING	
	(3) BRIEF DESCRIPTION (Briefscope, size, cost, etc.) AND SPECIFIC ROLE Tree Preservation: Mr. Tesauro provides or has provided Tree Preservation supervision		<input type="checkbox"/> Check if project performed with current firm
c	<b>Public Sector - City of Dania Beach</b>	ONGOING	
	(3) BRIEF DESCRIPTION (Briefscope, size, cost, etc.) AND SPECIFIC ROLE Inspections: Mr. Tesauro provides or has provided inspection supervision		<input type="checkbox"/> Check if project performed with current firm
d	<b>Public Sector - Town of Surfside</b>	ONGOING	
	(3) BRIEF DESCRIPTION (Briefscope, size, cost, etc.) AND SPECIFIC ROLE Site Plan Reviews: Mr. Tesauro provides or has provided site plan reviews		<input type="checkbox"/> Check if project performed with current firm

**E. RESUMES OF KEY PERSONNEL PROPOSED FOR THIS CONTRACT**

*(Complete one Section E for each key person.)*

12 NAME <b>SANDRA LEE, AICP CEP LEED AP BD+C</b>	13 ROLE IN THIS CONTRACT <b>ENVIRONMENTAL SPECIALIST</b>	14. YEARSEXPERIENCE	
		a TOTAL <b>23</b>	b WITH CURRENT FIRM <b>15</b>

15 FIRM NAME AND LOCATION *(City and State)*  
**CALVIN, GIORDANO & ASSOCIATES, INC. – FORT LAUDERDALE, FLORIDA**

16 EDUCATION <i>(DEGREE AND SPECIALIZATION)</i> <b>M.A. BIOLOGY/ECOLOGY, MAGNA CUM LAUDE, ST. CLOUD STATE UNIVERSITY, MINNESOTA B.A. BIOLOGY/BOTANY, MAGNA CUM LAUDE, ST. CLOUDSTATE UNIVERSITY, MINNESOTA</b>	17 CURRENT PROFESSIONAL REGISTRATION <i>(STATE AND DISCIPLINE)</i> <b>AICP CEP NO. 018627 LEED A.P. BD+C NO. 10215598 CFM US-07579</b>
---	--

18 OTHER PROFESSIONAL QUALIFICATIONS *(Publications, Organizations, Training, Awards, etc.)*  
Ms. Lee has over 20 years of professional experience and heads up CGA's Environmental Department coordinating regulatory permitting, environmental planning, site assessment, resource management and environmental technical support services. In general, Ms. Lee provides permitting services for environmental resources permits at the local, state and federal level, coordinates interagency and multi-disciplinary team efforts, provides the most feasible development and mitigation options, probable costs for mitigation options, provides tree mitigation plans and tree removal permitting services, conducts wetland delineations and wetland functional assessments, prepares Coastal and Conservation Elements for Comprehensive plans, coordinates on Comprehensive Plan Evaluation and Appraisal Reports (EAR) and EAR based amendments, designs wetland mitigation areas, provides bidding and construction oversight services for the construction and installation of mitigation areas, provides technical support, provides environmental resource management and environmental planning services to municipalities, provides floodplain management assistance and annual CRS reporting, provides annual NPDES reporting, manages field staff conducting wildlife and habitat assessments, imperiled species surveys and compliance monitoring reporting.

**19. RELEVANT PROJECTS**

	(1) TITLE AND LOCATION <i>(City and State)</i>	(2) YEAR COMPLETED	
		PROFESSIONAL SERVICES	CONSTRUCTION <i>(if applicable)</i>
a.	<b>Dania Cove Park Dania Beach, Florida</b>	2011	2012
	(3) BRIEF DESCRIPTION <i>(Brief scope, size, cost, etc.)</i> AND SPECIFIC ROLE <input checked="" type="checkbox"/> Check if project performed with current firm CGA was retained by the City of Dania Beach to develop a waterfront park design on an archeologically significant site containing a scenic mangrove cove, located along the Dania Cut-off canal. The park design included a fishing dock and platform, picnic pavilions and an exercise path. Native plantings were used to eliminate the park's need for permanent irrigation, and plants were selected for their educational opportunities including highlighting the butterfly attracting varieties. The scope included designing a stabilization system for a badly eroded and unstable shoreline embankment along with vegetating the shoreline; designing informational kiosks featuring the historic Native American midden and the site's natural resources; and obtaining all required permits for the installation of the site features. The scope also included coordinating with the County and State on gaining approval for the site design, tracking all expenditures and processing and obtaining all grant funds for the City, from the State and County and closing out the grants and permits. CGA's fees: \$103,000.		
b.	<b>Dania Beach Basin 5 Dania Beach, Florida</b>	2007	Ongoing
	(3) BRIEF DESCRIPTION <i>(Brief scope, size, cost, etc.)</i> AND SPECIFIC ROLE <input checked="" type="checkbox"/> Check if project performed with current firm CGA designed a unique stormwater improvement system for the City to benefit both the developed and adjacent natural habitats. CGA has conducted all the site and wetland functional assessments for permitting and has processed permits through the ACOE, the South Florida Water Management District and Broward County. Permitting required extensive negotiation with various Divisions of Broward County including the development of an Agreement with the County and City for use of the County land, and approval by the County Commission. The construction of the Bio-swale did require unavoidable impacts to wetlands; however, the design plan within the swale included removal of all exotic vegetation, excavation of marginal wetland habitat with revegetation, and increased hydrology to low quality wetlands thereby creating enhancements with a greater functional gain than the functional loss through the impacts. CGA's fees: \$236,000.		
c.	<b>Blessed John XXIII Miramar, FL</b>	2009	2012

	(3) BRIEF DESCRIPTION ( <i>Briefscope, size, cost, etc.</i> ) AND SPECIFIC ROLE <input checked="" type="checkbox"/> Check if project performed with current firm CGA was responsible for Environmental Permitting, which included the site assessments, wetland assessments and obtaining a COE, a Broward County and two South Florida Water Management District permits for the development site and the newly constructed off-site mitigation area. CGA designed the newly constructed off-site mitigation area, conducted the construction oversight and long term compliance monitoring and maintenance oversight for the new off-site mitigation area. CGA's fees: \$192,841.						
	<table border="1"> <tr> <td>(1) TITLE AND LOCATION (<i>City and State</i>) <b>Lloyd Estates Residential Improvements Oakland Park, Florida</b></td> <td colspan="2">(2) YEAR COMPLETED</td> </tr> <tr> <td></td> <td>PROFESSIONAL SERVICES 2013</td> <td>CONSTRUCTION (if applicable) Ongoing</td> </tr> </table>	(1) TITLE AND LOCATION ( <i>City and State</i> ) <b>Lloyd Estates Residential Improvements Oakland Park, Florida</b>	(2) YEAR COMPLETED			PROFESSIONAL SERVICES 2013	CONSTRUCTION (if applicable) Ongoing
(1) TITLE AND LOCATION ( <i>City and State</i> ) <b>Lloyd Estates Residential Improvements Oakland Park, Florida</b>	(2) YEAR COMPLETED						
	PROFESSIONAL SERVICES 2013	CONSTRUCTION (if applicable) Ongoing					
d.	(3) BRIEF DESCRIPTION ( <i>Briefscope, size, cost, etc.</i> ) AND SPECIFIC ROLE <input checked="" type="checkbox"/> Check if project performed with current firm CGA was retained by the City of Oakland Park to address flooding issues in an older residential neighborhood. The project involves the installation of swales/exfiltration trenches, piping and other improvements within the upland public right of ways. The project also involves the installation of two (2) new outfalls into the Sleepy River; dredging, a new sluice gate and new seawalls in the river; the construction of a pump station and the creation of a bio-swale/river overflow area within property adjacent to the river. CGA environmental staff conducted all site assessments for permitting, designed the bio-swale stormwater overflow area, and processed permits through the U.S. COE, the SFWMD and Broward County. Permitting challenges with this project included close coordination with the SFWMD operations staff on project interactions with the C13 canal, also amending a sovereign submerged lands lease for new dredge areas. CGA's fees: \$520,000.						
	<table border="1"> <tr> <td>(1) TITLE AND LOCATION (<i>City and State</i>) <b>Royal Palm Park Lakes maintenance BMP's Oakland Park, Florida</b></td> <td colspan="2">(2) YEAR COMPLETED</td> </tr> <tr> <td></td> <td>PROFESSIONAL SERVICES 2015</td> <td>CONSTRUCTION (if applicable) N/A</td> </tr> </table>	(1) TITLE AND LOCATION ( <i>City and State</i> ) <b>Royal Palm Park Lakes maintenance BMP's Oakland Park, Florida</b>	(2) YEAR COMPLETED			PROFESSIONAL SERVICES 2015	CONSTRUCTION (if applicable) N/A
(1) TITLE AND LOCATION ( <i>City and State</i> ) <b>Royal Palm Park Lakes maintenance BMP's Oakland Park, Florida</b>	(2) YEAR COMPLETED						
	PROFESSIONAL SERVICES 2015	CONSTRUCTION (if applicable) N/A					
e.	(3) BRIEF DESCRIPTION ( <i>Briefscope, size, cost, etc.</i> ) AND SPECIFIC ROLE <input checked="" type="checkbox"/> Check if project performed with current firm CGA was contracted by the City of Oakland Park to conduct an assessment of the current conditions of the lakes and lake connection in Royal Palm Park, conduct research in lake management strategies, conduct public meetings to gather input from surrounding and neighborhood properties, and produce a Lake Maintenance Best Management Practices document for the City. CGA environmental staff began by performing an assessment of the two lakes in Royal Palm Park (48 acres total) and the feeder canal on the north. Field visits were conducted to determine the type of vegetation present and area coverage, width/presence of lake shelves, shoreline conditions, and wildlife utilization. Research was also conducted into past water quality and lake maintenance activities. Public meetings were then held to gain additional input and information from the residents that live along the lakes. After gathering information from site visits, research, and public meetings, a Best Management Practices report was written specifically for the lakes at Royal Palm Park. The Public Works Department reviewed and provided comment on the final document, which then went to the City Commission for approval. CGA's fees: \$7,500.00.						
	<table border="1"> <tr> <td>(1) TITLE AND LOCATION (<i>City and State</i>) <b>Pembroke Harbor Pembroke Pines, FL</b></td> <td colspan="2">(2) YEAR COMPLETED</td> </tr> <tr> <td></td> <td>PROFESSIONAL SERVICES 2006</td> <td>CONSTRUCTION (if applicable) Ongoing</td> </tr> </table>	(1) TITLE AND LOCATION ( <i>City and State</i> ) <b>Pembroke Harbor Pembroke Pines, FL</b>	(2) YEAR COMPLETED			PROFESSIONAL SERVICES 2006	CONSTRUCTION (if applicable) Ongoing
(1) TITLE AND LOCATION ( <i>City and State</i> ) <b>Pembroke Harbor Pembroke Pines, FL</b>	(2) YEAR COMPLETED						
	PROFESSIONAL SERVICES 2006	CONSTRUCTION (if applicable) Ongoing					
f.	(3) BRIEF DESCRIPTION ( <i>Briefscope, size, cost, etc.</i> ) AND SPECIFIC ROLE <input checked="" type="checkbox"/> Check if project performed with current firm This project is a 168-acre residential and commercial development project located in Pembroke Pines that required 35 acres of on-site mitigation in addition to the purchase of mitigation bank credits. CGA environmental staff provided final permit coordination and permit modification services; final design of the mitigation area and provided bidding services for the installation and maintenance of the mitigation area. CGA provided mitigation construction oversight and conducted the five year compliance monitoring for this project. CGA continues to have a post-compliance management and oversight contract for this site. CGA's fees: \$1.2 million.						



**E. RESUMES OF KEY PERSONNEL PROPOSED FOR THIS CONTRACT**

*(Complete one Section E for each key person.)*

12 NAME <b>ROBERT W. ROUSH, PE</b>	13 ROLE IN THIS CONTRACT <b>ELECTRICAL ENGINEER</b>	14. YEARSEXPERIENCE	
		a TOTAL <b>46</b>	b WITH CURRENT FIRM <b>10</b>

15 FIRM NAME AND LOCATION *(City and State)*  
**CALVIN, GIORDANO & ASSOCIATES, INC. – FORT LAUDERDALE, FLORIDA**

16 EDUCATION <i>(DEGREE AND SPECIALIZATION)</i> <b>B.S. IN ELECTRICAL ENGINEERING, OKLAHOMA A &amp; M COLLEGE (OKLAHOMA STATE UNIVERSITY), 1957</b>	17 CURRENT PROFESSIONAL REGISTRATION <i>(STATE AND DISCIPLINE)</i> <b>FLORIDA PE NO. 20957 OKLAHOMA PE NO. 8692</b>
--	--

18 OTHER PROFESSIONAL QUALIFICATIONS *(Publications, Organizations, Training, Awards, etc.)*

Mr. Roush has been providing electrical engineering services for over 45 years. Mr. Roush is the Director of Electrical Engineering in the Fort Lauderdale office. His experience includes the marketing, quality control and design phase of electrical systems for transportation, commercial, industrial and institutional facilities.

**19. RELEVANT PROJECTS**

(1) TITLE AND LOCATION <i>(City and State)</i> <b>Various Locations</b>	(2) YEAR COMPLETED	
	PROFESSIONAL SERVICES <b>Various Times</b>	CONSTRUCTION (if applicable)
(3) BRIEF DESCRIPTION <i>(Brief scope, size, cost, etc.)</i> AND SPECIFIC ROLE <input checked="" type="checkbox"/> Check if project performed with current firm		
a.	<ul style="list-style-type: none"> <li>• Bachelor Enlisted Quarters, Yorktown Naval Station, Virginia. LEED project</li> <li>• Pembroke Pines WWTP Blower Replacement. Energy conservation project</li> <li>• City of Weston, Florida LED Streetlight Replacement. Energy conservation project</li> <li>• Pembroke Pines Water Treatment Plant. Energy conservation project</li> <li>• North Bay Road - Street Lighting, Bay Harbor Islands, FL</li> <li>• N.E. 172nd Street - Street Lighting, Sunny Isles Beach, FL</li> <li>• Advanced Technology Research Center, Oklahoma State University, Stillwater, OK</li> <li>• Maintenance Hangar Complex, McGuire AFB, NJ</li> <li>• Federal Express Hangars 11 &amp; 12, Memphis, TN</li> <li>• United Airlines Line Maintenance Facility, Denver International Airport, CO</li> <li>• Orthopedic Surgery Pavilion, Fort Worth, TX</li> <li>• Wash Rack Modifications, American Airlines, Alliance Airport, Fort Worth, TX</li> <li>• Hangar Modifications, American Airlines, Alliance Airport, Fort Worth, TX</li> <li>• Education Service Center Expansion and Renovation, Region XI, Fort Worth, TX</li> <li>• Christendom College Library, Front Royal, VA</li> <li>• US Navy Bachelor Enlisted Quarters, LEED, Design-Build, Yorktown Weapons Station, Yorktown, VA</li> <li>• National Geospatial and Intelligence Agency, Office Renovation – 40,000 SF – Maury Hall, Bethesda, MD</li> <li>• National Imagery and Mapping Agency, Office Renovation – 52,000 SF – Maury and Abert Halls, Bethesda, MD</li> <li>• DC Government, DC Armory, Washington, DC, Replacement of Electrical Systems &amp; Fire Alarm System, 588,000 SF</li> <li>• Mobile District Corps of Engineers, Digital Multiple Range Complex 15% Design, Fort Carson, CO</li> <li>• National Institute of Standards and Technology, Replacement of Mechanical and Electrical Systems in Buildings 220-226; Investigative Study and Report with Development of Three Schemes; Replacement of Mechanical and Electrical Systems in Building 222.</li> <li>• National Institute of Standards and Technology, Study of Emergency Power for Building 225; Design/Build Emergency Generator and Chiller for Building 225</li> <li>• Washington National Records Center, Suitland, MD. Design/Build Replace Stack Air Handling Units, Revise Lighting System, Revise Electric Distribution and Provide Emergency Power, Revise Fire Detection and Alarm System</li> <li>• Miramar Waste Water Reclamation Facility Expansion, Miramar, FL</li> <li>• Davie Waste Water Treatment Plant Switchgear Replacement, Davie, FL</li> <li>• Miramar East WTP Sludge Process, Miramar, FL</li> </ul>	



**E. RESUMES OF KEY PERSONNEL PROPOSED FOR THIS CONTRACT**

*(Complete one Section E for each key person.)*

12 NAME <b>STEVE WATTS, PSM</b>	13 ROLE IN THIS CONTRACT <b>SURVEYOR</b>	14. YEAREXPERIENCE	
		a TOTAL <b>27</b>	b WITH CURRENT FIRM <b>2</b>

15 FIRM NAME AND LOCATION *(City and State)*  
**CALVIN, GIORDANO & ASSOCIATES, INC. - FORT LAUDERDALE, FLORIDA**

16 EDUCATION <i>(DEGREE AND SPECIALIZATION)</i> <b>BSLS, PURDUE UNIVERSITY, 1984, LAMBDA SIGMA: LAND SURVEYING HONORARY</b>	17 CURRENT PROFESSIONAL REGISTRATION <i>(STATE AND DISCIPLINE)</i> <b>FLORIDA PSM NO. 4588</b>
--	--

18 OTHER PROFESSIONAL QUALIFICATIONS *(Publications, Organizations, Training, Awards, etc.)*

Mr. Watts has over 27 years of experience as a Professional Surveyor and Mapper registered in the State of Florida. Having spent his entire surveying career working in Broward County, he is extremely knowledgeable of the rules, requirements and has the experience in providing surveying and mapping services to South Florida municipalities. He specializes in public work and engineering design type surveys, land acquisition, easements, title research, and computer mapping.

**19. RELEVANT PROJECTS**

	(1) TITLE AND LOCATION <i>(City and State)</i>	(2) YEAR COMPLETED	
		PROFESSIONAL SERVICES	CONSTRUCTION <i>(if applicable)</i>
a.	<b>General Surveying &amp; Mapping Services North Lauderdale, Florida</b>	On-Going	\$45,000
	(3) BRIEF DESCRIPTION <i>(Brief scope, size, cost, etc.)</i> AND SPECIFIC ROLE <input checked="" type="checkbox"/> Check if project performed with current firm Boundary and Topographic Surveys, As-Built Surveys, Legal Descriptions, City Limit Determinations and General Surveying Services for the City of North Lauderdale. Additional responsibilities include project surveyor for the topographic survey of the municipal complex, GIS, water control district and utility mapping, Hampton Pines Park and Silver Lakes Middle School ball field renovation.		
b.	<b>General Surveying &amp; Mapping Services Florida Power &amp; Light</b>	2015	\$75,000
	(3) BRIEF DESCRIPTION <i>(Brief scope, size, cost, etc.)</i> AND SPECIFIC ROLE <input checked="" type="checkbox"/> Check if project performed with current firm Boundary and Topographic Surveys for FPL Boxcar Substation, Boundary Survey of Northwest Service Center - FPL surplus property. Construction stake out of 55 proposed pole locations in Palmetto Bay, Florida. Boundary & Topographic Survey for Port Everglades\Eller Sub-Station Site.		
c.	<b>Public Works\Facility Management Compound City of Coconut Creek, Florida</b>	2010/2011	\$6,000
	(3) BRIEF DESCRIPTION <i>(Brief scope, size, cost, etc.)</i> AND SPECIFIC ROLE <input checked="" type="checkbox"/> Check if project performed with current firm As-Built and Engineering Design Survey for new Public Works Building; Boundary & Topographic Survey, Legal Descriptions, FEMA Flood Elevation Certificates for proposed and finished construction.		
d.	<b>General Surveying &amp; Mapping Services Pompano Beach, Florida</b>	2014	\$125,000
	(3) BRIEF DESCRIPTION <i>(Brief scope, size, cost, etc.)</i> AND SPECIFIC ROLE <input type="checkbox"/> Check if project performed with current firm Boundary and Topographic Surveys: Community Park, Canal Point Park, Legal Descriptions: Avondale Fishing Piers; Topographic Surveys: Pompano Beach Air Park; Taxiway "N" - Pavement Widening, Runway 15-Runway Protection Zone, Magnetic Headings Runways 6-24, 15-33, 10-28		
e.	<b>General Surveying &amp; Mapping Services Coral Springs, Florida</b>	2014	\$25,000
	(3) BRIEF DESCRIPTION <i>(Brief scope, size, cost, etc.)</i> AND SPECIFIC ROLE <input type="checkbox"/> Check if project performed with current firm Boundary, Topographic and Design Surveys: City Hall North, NW 85 <sup>th</sup> Ave., NW 95 <sup>th</sup> Ave., Shadow Wood Blvd. Remsberg Dr., Westside Maintenance Facility, Wiles Road Terminus Linear Park. Sketch & legal Descriptions: Pedestrian Easements Coral Springs Medical Center.		

**E. RESUMES OF KEY PERSONNEL PROPOSED FOR THIS CONTRACT**

*(Complete one Section E for each key person.)*

12. NAME <b>ROBERT MCSWEENEY, PE</b>	13. ROLE IN THIS CONTRACT <b>CONSTRUCTION SERVICES</b>	14. YEARS EXPERIENCE	
		a. TOTAL <b>27</b>	B. WITH CURRENT FIRM <b>3.5</b>

15. FIRM NAME AND LOCATION *(City and State)*  
**CALVIN, GIORDANO & ASSOCIATES, INC. – FORT LAUDERDALE, FLORIDA**

16. EDUCATION <i>(DEGREE AND SPECIALIZATION)</i> <b>BS CIVIL ENGINEERING, FLORIDA INSTITUTE OF TECHNOLOGY, 1986</b>	17. CURRENT PROFESSIONAL REGISTRATION <i>(STATE AND DISCIPLINE)</i> <b>FLORIDA PE NO. 47506</b>
--	---

18. OTHER PROFESSIONAL QUALIFICATIONS *(Publications, Organizations, Training, Awards, etc.)*

Mr. Robert McSweeney, PE, has more than 22 years of local experience in South Florida including permitting, design, project management, and construction administration. His main focus over the past 12 years has been in construction administration for municipal/governmental and private sector clients. This work has involved large scale FDOT roadway projects, utility and neighborhood improvement projects, and roadway reconstruction/traffic calming for multiple municipalities.

Mr. McSweeney has the experience to serve the City of Weston, having served as a contract administrator for multiple continuing services contracts providing engineering service to municipal clients including the Town of Surfside, the City of Fort Lauderdale, the City of Pompano Beach, and the City of Deerfield Beach.

**19. RELEVANT PROJECTS**

	(1) TITLE AND LOCATION <i>(City and State)</i>	(2) YEAR COMPLETED	
		PROFESSIONAL SERVICES	CONSTRUCTION <i>(if applicable)</i>
a.	<b>Town of Surfside Miscellaneous Engineering Services Contract, Project Manager/ Engineer-of-Record</b>	Ongoing	Ongoing
	(3) BRIEF DESCRIPTION <i>(Brief scope, size, cost, etc.)</i> AND SPECIFIC ROLE <input checked="" type="checkbox"/> Check if project performed with current firm Project Manager/Engineer-of-Record for an ongoing town-wide infrastructure improvements project inclusive of sewer main and lateral rehabilitation/replacement; sewage pump station(s) rehabilitation; storm drainage system upgrades with new storm water pump stations; and water main and services replacements. Performing continuing services by providing general engineering, and consulting services to the municipality on an as needed basis. <b>Perform review of development plans, utility plans and service upgrades; represent Town as Town Engineer and provide representation/liaison services; provide cost estimating, perform required permitting and assist in Capital Improvements determinations.</b> CGA's fees: \$20,000/year annual contract.		
b.	<b>City of Pompano Beach Miscellaneous Engineering Services Contract, Contract Manager/Engineer-of-Record</b>	2010	2010
	(3) BRIEF DESCRIPTION <i>(Brief scope, size, cost, etc.)</i> AND SPECIFIC ROLE <input checked="" type="checkbox"/> Check if project performed with current firm Contract Manager/Engineer-of-Record for the continuing services contract which provided general engineering, and surveying and mapping services to the municipality on an as needed basis. Projects provided under this contract included reclaimed/reuse water main, and force main design and construction administration, Pompano Beach Sidewalk Construction Program, facility assessment reporting, municipal pier renovation inspections, Broward County/Pompano Beach Branch Library site engineering design, and bridge and culvert improvements. CGA's fees: \$300,000.		
c.	<b>City of Deerfield Beach, FL, Miscellaneous Engineering Services Contract, Contract Manager</b>	2010	2010
	(3) BRIEF DESCRIPTION <i>(Brief scope, size, cost, etc.)</i> AND SPECIFIC ROLE <input checked="" type="checkbox"/> Check if project performed with current firm Contract Manager/Engineer-of-Record of an ongoing continuing services contract providing as needed General Engineering, and Surveying and Mapping services to the municipality. Projects provided under the contract included: A-1-A "S-Curve" Beach Roadway and Beautification Redevelopment; Intersection improvement design of Goolsby and Hillsboro Boulevards; Intersection improvement design of Century and Hillsboro Boulevards; and Hillsboro Boulevard CEI Services. CGA's fees: \$400,000.		

**E. RESUMES OF KEY PERSONNEL PROPOSED FOR THIS CONTRACT**  
(Complete one Section E for each key person.)

12. NAME <b>BRUCE BERNARD</b>	13. ROLE IN THIS CONTRACT <b>ASSEST MANAGER/FIELD SUPERVIOSR</b>	14. YEARS EXPERIENCE	
		a. TOTAL <b>43</b>	b. WITH CURRENT FIRM <b>11</b>

15. FIRM NAME AND LOCATION (City and State)  
**CALVIN, GIORDANO & ASSOCIATES, INC. – FORT LAUDERDALE, FL**

16. EDUCATION (DEGREE AND SPECIALIZATION) Broward Community College, 1972 University of Michigan Utility Management Course, 1979	17. CURRENT PROFESSIONAL REGISTRATION (STATE AND DISCIPLINE) Certificate of Training – Disaster Recovery <ul style="list-style-type: none"> <li>• Disaster Debris Management</li> <li>• FEMA Emergency Management</li> <li>• Utility Terrorism Preparation and Response</li> <li>• Asphalt Pavement Maintenance</li> <li>• Licensed in Water and Wastewater Plant Operations</li> </ul>
--	--

18. OTHER PROFESSIONAL QUALIFICATIONS (Publications, Organizations, Training, Awards, etc.)  
Mr. Bernard's experience and education has been obtained through on the job training within related fields. Beginning with the plumbing trade in the early 1970s, he was able to progress to public and private utility plant and field operations work over ten years. He advanced to public sector management for twenty years. During his tenure in the public sector, Mr. Bernard gained knowledge of drainage concepts and installation, water and wastewater design and installation, roadway construction, and trail system management, and wetland requirements. He served for nine years as Department Director for Public Works and Capital Projects. Mr. Bernard gained experience in right-of-way maintenance, Capital Improvement construction and administration, and coordinating of projects through governmental agencies.

**19. RELEVANT PROJECTS**

e.	(1) TITLE AND LOCATION (City and State) <b>Miromar Lakes Community Development District Fort Myers, Florida</b>	(1) YEAR COMPLETED	
		PROFESSIONAL SERVICES 2013- Ongoing	CONSTRUCTION (if applicable)
	(3) BRIEF DESCRIPTION (Brief scope, size, cost, etc.) AND SPECIFIC ROLE Asset Manager for Miromar Lakes Community Development District. Provide excavation re-grading on lake bank slopes behind houses. <input type="checkbox"/> Check if project performed with current firm		
a.	(1) TITLE AND LOCATION (City and State) <b>Bay Harbor Island Community Improvements PH 2 and 3 Bay Harbor Island, Florida</b>	(5) YEAR COMPLETED	
		PROFESSIONAL SERVICES 2007	CONSTRUCTION (if applicable) 2011
	(3) BRIEF DESCRIPTION (Brief scope, size, cost, etc.) AND SPECIFIC ROLE Roadway improvements including new water mains, water service connections, replacement of valley gutter and curbing, roadway and parking space reconstruction, pavement overlay and markings. CGA served as owner representative on the projects. CGA's fees : \$1.21 million <input checked="" type="checkbox"/> Check if project performed with current firm		
b.	(1) TITLE AND LOCATION (City and State) <b>Infrastructure Rehabilitation Surfside, Florida</b>	(5) YEAR COMPLETED	
		PROFESSIONAL SERVICES 2008	CONSTRUCTION (if applicable) 2013
	(3) BRIEF DESCRIPTION (Brief scope, size, cost, etc.) AND SPECIFIC ROLE Engineer's field coordinator for water and sewer roadway and drainage improvements. Project included milling and overlay of 90% of Surfside. CGA's fees: \$1.543 million <input checked="" type="checkbox"/> Check if project performed with current firm		
c.	(1) TITLE AND LOCATION (City and State) <b>Bay Harbor Islands – 92<sup>nd</sup> Street Park Bay Harbor Island, Florida</b>	(2) YEAR COMPLETED	
		PROFESSIONAL SERVICES 2009	CONSTRUCTION (if applicable) 2010
	(3) BRIEF DESCRIPTION (Brief scope, size, cost, etc.) AND SPECIFIC ROLE Designing and construction services for passive park, dog park, fitness stations, parking lot, curbing, irrigation, landscaping and site lighting. CGA'S fees: \$ 88,000 <input checked="" type="checkbox"/> Check if project performed with current firm		
d.	(1) TITLE AND LOCATION (City and State) <b>College Ave Roadway Improvements Davie, Florida</b>	(3) YEAR COMPLETED	
		PROFESSIONAL SERVICES 2011	CONSTRUCTION (if applicable) 2014
	(3) BRIEF DESCRIPTION (Brief scope, size, cost, etc.) AND SPECIFIC ROLE Roadway widening with medians, irrigation, landscaping, drainage reconstruction and lighting improvements. CGA's fees: \$260,000 <input type="checkbox"/> Check if project performed with current firm		
e.	(1) TITLE AND LOCATION (City and State) <b>Bal Harbour Sanitary Improvements Bal Harbour, Florida</b>	(1) YEAR COMPLETED	
		PROFESSIONAL SERVICES 2016	CONSTRUCTION (if applicable) 2017
	(3) BRIEF DESCRIPTION (Brief scope, size, cost, etc.) AND SPECIFIC ROLE CGA construction division provided owner's representative services for this project. CGA's fees: \$110,000 <input type="checkbox"/> Check if project performed with current firm		

**E. RESUMES OF KEY PERSONNEL PROPOSED FOR THIS CONTRACT**

*(Complete one Section E for each key person.)*

12. NAME <b>ERIC CZERNIEJEWSKI</b>	13. ROLE IN THIS CONTRACT <b>TRAFFIC ENGINEERING</b>	14. YEARS EXPERIENCE	
		a. TOTAL <b>19</b>	b. WITH CURRENT FIRM <b>1</b>
15. FIRM NAME AND LOCATION (City and State) <b>CALVIN, GIORDANO &amp; ASSOCIATES, INC. – FORT LAUDERDALE, FLORIDA</b>			
16. EDUCATION (DEGREE AND SPECIALIZATION) <b>BS, CIVIL ENGINEERING, SOUTHERN ILLINOIS UNIVERSITY</b>		17. CURRENT PROFESSIONAL REGISTRATION (STATE AND DISCIPLINE) <b>PE LICENSE (#58002) FLORIDA</b>	
18. OTHER PROFESSIONAL QUALIFICATIONS <i>(Publications, Organizations, Training, Awards, etc.)</i>			

Eric Czerniejewski, P.E., is the Director of Traffic Engineering for CGA with 19 years of experience in transportation infrastructure design, traffic engineering and transportation planning. He has experience in transportation projects that include preparation of traffic studies including corridor studies, traffic impact studies, mobility studies and parking utilization and reduction studies. He is also specialized in signalization design, roadway design, managing, designing and permitting select transportation infrastructure engineering projects; planning, developing and coordinating civil engineering design documents; and coordinating construction engineering and inspection. Some of his relevant mobility plan experience includes development of citywide mobility plan for the City of Fort Lauderdale, preparation of the campus master mobility plans for Florida International University and Florida Atlantic University campuses as well as Memorial Health Care Joe DiMaggio Hospital campus. He is certified to prepare traffic control plans and process LAP projects by FDOT.

**19. RELEVANT PROJECTS**

(1) TITLE AND LOCATION <i>(City and State)</i>	(2) YEAR COMPLETED	
	PROFESSIONAL SERVICES	CONSTRUCTION <i>(if applicable)</i>
<b>Town of Miami Lakes 170th Street Greenway, Miami Lakes, FL.</b>  (3) BRIEF DESCRIPTION <i>(Brief scope, size, cost, etc.)</i> AND SPECIFIC ROLE <input type="checkbox"/> Check if project performed with current firm The 170th Street Greenway serves as a critical pedestrian link for key recreational facilities, educational campuses and numerous neighborhoods. Embracing the corridor’s existing shade tree canopy and waterside vistas, the Greenway provides a passive recreational resource while improving the Town of Miami Lakes’ walkability. The Greenway design preserved 100% of the existing native tree species through precise alignment of the multi-modal trail. Extensive underground utilities were also present within the Greenway corridor. The design prevented any impact to these utilities and provided all requested maintenance access for the utility agencies. The Greenway also improved safety along the 170th Street corridor by providing a separation of pedestrian and vehicular uses. Connectivity to existing neighborhoods was provided by delineated ADA accessible enhanced crosswalks along the corridor. Community drainage was enhanced through the Greenway’s design by providing improved drainage storage and treatment areas within the corridor. Located within a Miami-Dade County Canal right- of-way the design and permitting for this Greenway required extensive coordination with both the Town of Miami Lakes and Miami-Dade County Services for this project included landscape architecture, civil engineering, traffic engineering, permitting and utility coordination.	2011	2012
<b>Monterra Greenway and Bike Path, Cooper City, FL.</b>  (3) BRIEF DESCRIPTION <i>(Brief scope, size, cost, etc.)</i> AND SPECIFIC ROLE <input type="checkbox"/> Check if project performed with current firm Designed the greenway/park with a one mile bike trail Within the 27 acres of the FPL easement that bisects the Monterra (Waldrep) property as part of the Broward County Greenway System. Transportation design routed the recreational trail/ bike trail, lay-out of fitness stations, tot-lots, shade structures and multi-use courts, parking and access to the trail, security fencing and access gates and landscaping. Planting and irrigation plans, along with miscellaneous hardscape design, were provided. The greenway and bike path connected to each of the residential and commercial phases of the Monterra development and to nearby area schools.	2011	2012
<b>City of Key West Traffic Qualitative Assessment, Key West, FL.</b>  (3) BRIEF DESCRIPTION <i>(Brief scope, size, cost, etc.)</i> AND SPECIFIC ROLE <input type="checkbox"/> Check if project performed with current firm (This row is empty in the original image)	2015	N/A

	(3) BRIEF DESCRIPTION ( <i>Brief scope, size, cost, etc.</i> ) AND SPECIFIC ROLE <input type="checkbox"/> Check if project performed with current firm Consultant provided a Traffic Qualitative Assessment for several concerns regarding traffic within Old Town that have been received by the City's Engineering Services Department. Consultant provided a field review and provided several recommendations utilizing the methodology included in the 2009 Manual of Uniform Traffic Control Devices, 2011 FDOT Florida Green Book, and the 2010 Highway Capacity Manual to mitigate any potential safety and operational deficiencies for each identified traffic concern. The identified concerns included traffic safety and operational issues related to pedestrian, bicycle, vehicular and transit transportation modes.		
	(1) TITLE AND LOCATION ( <i>City and State</i> ) <b>Mast Arm Conversion Group Phases I&amp;II- Horsepower Electric, Broward County, FL</b>	(2) YEAR COMPLETED	
		PROFESSIONAL SERVICES 2015	CONSTRUCTION ( <i>if applicable</i> ) Ongoing
e.	(3) BRIEF DESCRIPTION ( <i>Brief scope, size, cost, etc.</i> ) AND SPECIFIC ROLE <input checked="" type="checkbox"/> Check if project performed with current firm Program Manager and Quality Control Officer for the Design Build professional services associated with the conversion of span-wire supported traffic signal at 35 intersections all over Broward County. This project is currently under the design stages. CGA along with Horsepower Electric is providing engineering and design services, plans preparation, field survey, utility coordination, permitting, public involvement, coordination with adjoining projects, minor roadway reconstruction and paving, signing and pavement marking, ADA compliant sidewalk reconstruction, traffic signal construction, installation of underground conduit and interconnect cable, installation of monitoring devices (video detection), installation of vehicle pre-emption systems, as built record plans, and warranty necessary to provide the traffic signalization improvements in accordance with Broward County and Florida Department of Transportation specifications. Professional Fees: \$2,025,000.		
	(1) TITLE AND LOCATION ( <i>City and State</i> ) <b>FDOT District 6 Districtwide Public Transportation Consultant Contract, Miami Dade County, FL.</b>	(2) YEAR COMPLETED	
		PROFESSIONAL SERVICES 2015	CONSTRUCTION ( <i>if applicable</i> ) N/A
f.	(3) BRIEF DESCRIPTION ( <i>Brief scope, size, cost, etc.</i> ) AND SPECIFIC ROLE <input checked="" type="checkbox"/> Check if project performed with current firm Provided studies, performed evaluations, developed strategies, and secured funding for highway, transit, rail, freight and seaport projects while enhancing performance for all transportation modes. These analyses required expertise in collecting data, assessing the context, validation of data, analysis of demands, forecasting and growth and provided transit design and construction determinations in conjunction to responding to public and private stakeholders concerns. Completed the following projects as part of this Contract: <ul style="list-style-type: none"> <li>• Miami Dade Aviation Department (MDAD) Triennial Safety Audit of MDAD Automated People</li> <li>• Mover Systems- Audit Review of the MDAD Transit Security Program Plan and System Safety Program Plan</li> <li>• Miami Dade Transit (MDT) Triennial Safety Audit of Bus and Rail Systems- Audit Review of the MDAD Transit Security Program Plan and System Safety Program Plan</li> </ul>		
	(1) TITLE AND LOCATION ( <i>City and State</i> ) <b>Transportation Manager-City of Fort Lauderdale Fort Lauderdale, FL</b>	(2) YEAR COMPLETED	
		PROFESSIONAL SERVICES 2012	CONSTRUCTION ( <i>if applicable</i> ) N/A
g.	(3) BRIEF DESCRIPTION ( <i>Brief scope, size, cost, etc.</i> ) AND SPECIFIC ROLE <input checked="" type="checkbox"/> Check if project performed with current firm Transportation Manager for the City of Fort Lauderdale Transportation and Mobility Department managing the traffic engineering, transportation planning and traffic design program. Developed the Uptown Link and Route Extensions for the Downtown Fort Lauderdale Transportation Management Associations' Citywide Sun Trolley community bus service, developed and submitted relevant grant applications for transportation and transit projects including TIGER, Transportation Enhancement, EPA Green Streets and FTA New Freedom, developed the key citywide long-range transportation plan including the 2015-2035 comprehensive strategic multimodal program entitled Connecting the Blocks- Creating Options for Moving People, created the City's Complete Streets Guidelines and managed the citywide review of all transportation elements of the Development Review Committee to determine traffic impacts for new development projects in the City. Professional Fees: \$200,000.		
	(1) TITLE AND LOCATION ( <i>City and State</i> ) <b>Coral Station at Brickell Way Traffic Impact Analysis, Miami, FL.</b>	(2) YEAR COMPLETED	
f.		PROFESSIONAL SERVICES 2011	CONSTRUCTION ( <i>if applicable</i> ) N/A

	(3) BRIEF DESCRIPTION ( <i>Brief scope, size, cost, etc.</i> ) AND SPECIFIC ROLE This traffic impact study evaluated the anticipated traffic impacts within a downtown Miami area for a proposed mixed-use development. The site features offices, apartments, restaurants, retail and a parking garage. The analysis included data collection, trip generation and distribution, forecasted future volumes and a traffic signal warrant analysis. In addition, Consultant looked at other approved project traffic within a one-mile radius of the project to better predict the future capacity of the surrounding roadways. Synchro capacity analysis software was used to evaluate traffic operations and followed MUTCD guidelines for the traffic signal warrant analysis.	<input type="checkbox"/> Check if project performed with current firm	
	(1) TITLE AND LOCATION ( <i>City and State</i> ) <b>Florida Department of Transportation (FDOT) District 6 Biscayne Boulevard (NE 5th Street to NE 13th Street)</b>	(2) YEAR COMPLETED	
		PROFESSIONAL SERVICES 2010	CONSTRUCTION ( <i>if applicable</i> ) 2011
g.	(3) BRIEF DESCRIPTION ( <i>Brief scope, size, cost, etc.</i> ) AND SPECIFIC ROLE In order to continue the enhancements of the US 1 Corridor for the City of Miami, Consultant developed a streetscape design to unify the area surrounding the American Airlines Arena, Bicentennial Park and the Performing Arts Center. Enhancement of the pedestrian corridor and integration with the existing Roberto Burle Marx paving design, directly to the south, was integral in the design of the project. Coordinated with the City of Miami during the design process, participated in numerous public involvement and design meetings, and incorporated access management concepts, including limited vehicular access and multi-modal transportation. Improvements included specialty paving and lighting elements. This project was part of a multi-year continuing service contract with FDOT District 6.	<input type="checkbox"/> Check if project performed with current firm	
	(1) TITLE AND LOCATION ( <i>City and State</i> ) <b>Downtown Boca Raton Traffic Study Boca Raton, Florida</b>	(2) YEAR COMPLETED	
		PROFESSIONAL SERVICES 2016	CONSTRUCTION ( <i>if applicable</i> ) N/A
h.	(3) BRIEF DESCRIPTION ( <i>Brief scope, size, cost, etc.</i> ) AND SPECIFIC ROLE Project Manager and Traffic Engineer for the preparation of a traffic study at the intersection of Palmetto Park Road and NE/SE 5th Avenue which examined the safety and the operation of the intersection of Palmetto Park Road and NE/SE 5th Avenue and seven other surrounding intersections and enumerated at least three viable improvement concept plans. The alternative analysis included quantitative and qualitative elements such as Safety, Context Sensitivity, Capacity, Benefit Cost and Fatal Flaw analysis as well as the evaluation of bridge preemption and signal coordination with the subject intersection. Professional Fees: \$50,000.	<input checked="" type="checkbox"/> Check if project performed with current firm	
	(1) TITLE AND LOCATION ( <i>City and State</i> ) <b>City of Key West ULDR Update and Complete Streets Manual Key West, FL</b>	(2) YEAR COMPLETED	
		PROFESSIONAL SERVICES 2015	CONSTRUCTION ( <i>if applicable</i> ) N/A
i.	(3) BRIEF DESCRIPTION ( <i>Brief scope, size, cost, etc.</i> ) AND SPECIFIC ROLE Traffic Engineer for complete rewrite of the City's Land Development Regulations. The key areas of focus for the project included the incorporation of new standards, programs, and processes related to Complete Streets, Parking, Transportation Demand Management, Affordable Workforce Housing, Signage, Landscape, Urban Design, Green Building and Adaptation Planning and Disaster Planning. Professional Fees: \$143,700.	<input checked="" type="checkbox"/> Check if project performed with current firm	



<b>F. EXAMPLE PROJECTS WHICH BEST ILLUSTRATE PROPOSED TEAM'S QUALIFICATIONS FOR THIS CONTRACT</b> <i>(Present as many projects as requested by the agency, or 10 projects, if not specified. Complete one Section F for each project.)</i>		<b>20. EXAMPLE PROJECT KEY NUMBER</b> <b>1</b>
<b>21. TITLE AND LOCATION (City and State)</b> <b>AQUA ISLES COMMUNITY DEVELOPMENT DISTRICT</b> <b>DANIA BEACH, FLORIDA</b>		<b>22. YEAR COMPLETED</b> PROFESSIONAL SERVICES <b>2007-PRESENT</b> CONSTRUCTION <i>(If applicable)</i> <b>2012</b>

**23. PROJECT OWNER'S INFORMATION**

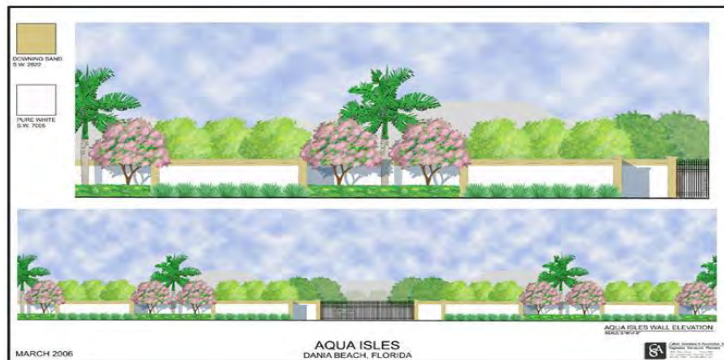
<b>a. PROJECT OWNER</b> <b>AQUA ISLES BY CARR RESIDENTIAL, LLC</b>	<b>b. POINT OF CONTACT NAME</b> <b>JIM CARR PARTNER</b>	<b>c. POINT OF CONTACT TELEPHONE NUMBER</b> <b>(305) 448-0353</b>
---	--	--

**24. BRIEF DESCRIPTION OF PROJECT AND RELEVANCE TO THIS CONTRACT (Include scope, size, and cost)**

The Aqua Isles Community Development District ("District") is located in the City of Dania Beach in Broward County, Florida. The District has been established in accordance with applicable Florida Statutes as a Community Development District, a local unit of special-purpose government. The District currently contains approximately 10.35 acres of land proposed to be developed as a townhouse community (the "Development" or "Aqua Isles").

Full planning, surveying, engineering, and permitting/construction services were provided to develop (suburban infill) an approximately 10.35-acre waterfront parcel into a gated 127-unit townhouse development. The site required plat note amendment and site planning services, including landscape design. Calvin, Giordano & Associates, Inc (CGA) provided the initial engineering to form the District and remains as the District Engineer today.

CGA provided permit modification services to increase the marina slips, and provided the oversight of remediation in mangrove habitat within an adjacent easement.



**25. FIRMS FROM SECTION C INVOLVED WITH THIS PROJECT**

	(1) FIRM NAME	(2) FIRM LOCATION (City and State)	(3) ROLE
<b>a.</b>	Calvin, Giordano & Associates, Inc.	Fort Lauderdale, Florida	Civil Engineering, Infrastructure, Annual Reports. Wetland mitigation permitting
<b>b.</b>			
<b>c.</b>			
<b>d.</b>			
<b>e.</b>			

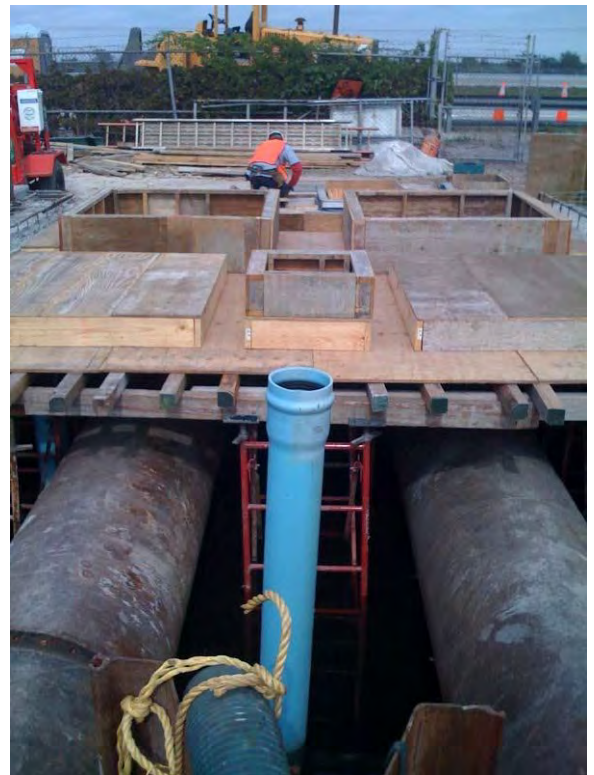
<b>F. EXAMPLE PROJECTS WHICH BEST ILLUSTRATE PROPOSED TEAM'S QUALIFICATIONS FOR THIS CONTRACT</b> <i>(Present as many projects as requested by the agency, or 10 projects, if not specified. Complete one Section F for each project.)</i>		20. EXAMPLE PROJECT KEY NUMBER <b>2</b>
21. TITLE AND LOCATION <i>(City and State)</i> <b>BONAVENTURE DEVELOPMENT DISTRICT</b> <b>WESTON, FLORIDA</b>		22. YEAR COMPLETED PROFESSIONAL SERVICES <b>1996-PRESENT</b> CONSTRUCTION <i>(If applicable)</i> <b>1996-PRESENT</b>
23. PROJECT OWNER'S INFORMATION		
a. PROJECT OWNER <b>CITY OF WESTON</b>	b. POINT OF CONTACT NAME <b>DENISE BARRETT</b> <b>COMMUNICATIONS DIRECTOR</b>	c. POINT OF CONTACT TELEPHONE NUMBER <b>(954) 389-4321</b>

24. BRIEF DESCRIPTION OF PROJECT AND RELEVANCE TO THIS CONTRACT *(Include scope, size, and cost)*

The Bonaventure Development District (BDD), formerly known as West Lauderdale Water Control District, was first developed in the early 1970's and annexed into the City of Weston in 1997 and encompasses 1,237 acres, to include residential, a major hotel/conference facility, two golf courses and a limited number of commercial properties.

The District's stormwater management system consists of canals and lakes interconnected discharging into the South Florida Water Management District (SFWMD) North New River Canal (NNRC). The water quality and discharge rates are permitted to be controlled by two stormwater pump stations on the northern boundary of the community. Construction of the principal Drainage Facilities began in 1970 and was completed in 1974.

Calvin Giordano & Associates, Inc. (CGA), the District Drainage Engineer for the Bonaventure Development District, continually evaluates the existing water management system, and identifies the required improvements to achieve the Level of Service (LOS) for flood protection and water quality desired by the District. CGA then designs, permits and administers the construction of the improvements



25. FIRMS FROM SECTION C INVOLVED WITH THIS PROJECT			
	(1) FIRM NAME	(2) FIRM LOCATION <i>(City and State)</i>	(3) ROLE
a.	Calvin, Giordano & Associates, Inc.	Fort Lauderdale, Florida	Civil Engineering, Engineering Studies, Infrastructure Assessments, Design, Permitting, Grants
b.			
c.			
d.			



<b>F. EXAMPLE PROJECTS WHICH BEST ILLUSTRATE PROPOSED TEAM'S QUALIFICATIONS FOR THIS CONTRACT</b> <i>(Present as many projects as requested by the agency, or 10 projects, if not specified. Complete one Section F for each project.)</i>		20. EXAMPLE PROJECT KEY NUMBER <b>3</b>
21. TITLE AND LOCATION <i>(City and State)</i> <b>INDIAN TRACE DEVELOPMENT DISTRICT          WESTON, FLORIDA</b>	14. YEARS EXPERIENCE	
	PROFESSIONAL SERVICES <b>1996-PRESENT</b>	CONSTRUCTION <i>(If applicable)</i>
23. PROJECT OWNER'S INFORMATION		
a. PROJECT OWNER <b>CITY OF WESTON</b>	b. POINT OF CONTACT NAME <b>DENISE BARRETT          COMMUNICATIONS DIRECTOR</b>	c. POINT OF CONTACT TELEPHONE NUMBER <b>(954) 385-2000</b>

24. BRIEF DESCRIPTION OF PROJECT AND RELEVANCE TO THIS CONTRACT *(Include scope, size, and cost)*

CGA designed, and permitted the vast majority of the original sanitary, water, drainage, and roadway improvements for the Indian Trace Development District (ITDD), which is a dependent district of the City of Weston. We have continued since 1996 to design and permit infrastructure improvements required to allow continuous development of the City.

In addition, CGA has been providing District Drainage Engineering services to ITDD since 1996. The Indian Trace Development District consists of 2,245 acres of interconnected lakes and wetlands discharging into the South Florida Water Management District (SFWMD) C-11 West Canal. The water quality and discharge rates are controlled by the two large storm water pump stations on the southern boundary of the community.

Phase I of the Storm water Master Plan identified the hydraulic and the hydrologic characteristics of the study area. This data was then compared to the previously permitted information and discrepancies were identified and rectified through use of the existing GIS database. This information provided a more refined level of accuracy than was used to obtain the previous permits. In addition, CGA verified existing data using a G.P.S. Survey Crew. This model has been used as a basis for evaluation of all proposed development within the District.

CGA also provides wetland permitting and monitoring services to the District.



25. FIRMS FROM SECTION C INVOLVED WITH THIS PROJECT

	(1) FIRM NAME	(2) FIRM LOCATION <i>(City and State)</i>	(3) ROLE Prime-
a.	Calvin, Giordano & Associates, Inc.	Fort Lauderdale, Florida	Engineering Studies, Design, Permitting, Surveying. Wetland mitigation permitting, and monitoring.
b.			
c.			
d.			
e.			

<b>F. EXAMPLE PROJECTS WHICH BEST ILLUSTRATE PROPOSED TEAM'S QUALIFICATIONS FOR THIS CONTRACT</b> <i>(Present as many projects as requested by the agency, or 10 projects, if not specified. Complete one Section F for each project.)</i>		<b>20. EXAMPLE PROJECT KEY NUMBER</b> <b>4</b>
<b>21. TITLE AND LOCATION (City and State)</b> <b>WESTON DRAINAGE IMPROVEMENTS</b> <b>Weston, FL</b>	<b>22. YEAR COMPLETED</b>	
	<b>PROFESSIONAL SERVICES</b> <b>2012</b>	<b>CONSTRUCTION (If applicable)</b> <b>2015</b>

**23. PROJECT OWNER'S INFORMATION**

<b>a. PROJECT OWNER</b> <b>City of Weston</b>	<b>b. POINT OF CONTACT NAME</b> <b>Denise Barrett</b>	<b>c. POINT OF CONTACT TELEPHONE NUMBER</b> <b>(954) 385-2000</b>
--	--	--

**24. BRIEF DESCRIPTION OF PROJECT AND RELEVANCE TO THIS CONTRACT** *(Include scope, size, and cost)*



CGA analyzed and modeled the City's existing stormwater management system, which consists of collection systems draining into interconnected lake system discharging into the South Florida Water Management District (SFWMD) canals. The City contains 15,000 acres of land within Indian Trace Development District (ITDD) and the

Bonaventure Development District (BDD), both of which are within the South Florida Water Management District (SFWMD). The water quality and discharge rates are permitted to be controlled by stormwater pump stations. The results of the hydraulic model indicated that a few of the interconnecting culverts were undersized and the collections system needed upgrading. Site visits during rain events highlighted areas that had surface drainage issues. The scope of the project includes replacing undersized culverts and upgrading the collection system with new catch basins, piping, outfalls and French drains in different areas throughout the City. Traffic control phasing including limiting road closures on adjacent streets and detour routes was detailed in the construction documents in order to minimize impacts to the residents and road users in the City.



CGA secured grant funding for this project by modifying an existing HMGP grant that was used to upgrade the pump stations in 2009. The FEMA BCA software was utilized to apply for the modification and justify the project. CGA prepared and submitted all supporting documentation while working with the City and FDEM to obtain the additional funding for the vital project.

Construction Cost: \$2,000,000 / Firm's Fee: \$200,000

**25. FIRMS FROM SECTION C INVOLVED WITH THIS PROJECT**

	(1) FIRM NAME	(2) FIRM LOCATION <i>(City and State)</i>	(3) ROLE
<b>a.</b>	<b>Calvin, Giordano &amp; Associates, Inc.</b>	<b>Fort Lauderdale, FL</b>	<b>Prime</b>
<b>b.</b>			
<b>c.</b>			
<b>d.</b>			

<b>F. EXAMPLE PROJECTS WHICH BEST ILLUSTRATE PROPOSED TEAM'S QUALIFICATIONS FOR THIS CONTRACT</b> <i>(Present as many projects as requested by the agency, or 10 projects, if not specified. Complete one Section F for each project.)</i>		20. EXAMPLE PROJECT KEY NUMBER <b>5</b>
21. TITLE AND LOCATION <i>(City and State)</i> <b>NATALIE'S COVE MASTER DRAINAGE STUDY          COOPER CITY, FLORIDA</b>	22. YEAR COMPLETED	
	PROFESSIONAL SERVICES <b>2014</b>	CONSTRUCTION <i>(If applicable)</i>
23. PROJECT OWNER'S INFORMATION		
a. PROJECT OWNER <b>CITY OF COOPER CITY</b>	b. POINT OF CONTACT NAME <b>MIKE BAILEY</b>	c. POINT OF CONTACT TELEPHONE NUMBER <b>(954) 434-2300</b>
24. BRIEF DESCRIPTION OF PROJECT AND RELEVANCE TO THIS CONTRACT <i>(Include scope, size, and cost)</i>		



The residential developments within the Flamingo Gardens master drainage basin have a history of flooding problems. The 135-acre drainage basin is served by a master drainage system consisting of interconnected lakes, swales, and stormwater conveyance systems. CGA has performed the drainage study to determine the probable cause of flooding and to evaluate potential drainage improvements. Upon extensive research on historical plans, design, permits, field investigation, and hydrologic/hydraulic modeling, CGA has identified the deficiencies within the master drainage system including insufficient storage volume and extremely undersized lake-interconnect pipes.

In order to increase the flood protection level of service (LOS) for the area, CGA has recommended drainage improvements work including replacement of undersized culverts, and expansion of existing lakes. The estimated construction cost for recommended improvements is \$1.6 million.

25. FIRMS FROM SECTION C INVOLVED WITH THIS PROJECT		
<b>a.</b> (1) FIRM NAME Calvin, Giordano & Associates, Inc.	(2) FIRM LOCATION <i>(City and State)</i> Fort Lauderdale, FL	(3) ROLE Engineering, Surveying, Permitting, Planning, GIS, Construction Services
<b>b.</b>		
<b>c.</b>		
<b>d.</b>		



<b>F. EXAMPLE PROJECTS WHICH BEST ILLUSTRATE PROPOSED TEAM'S QUALIFICATIONS FOR THIS CONTRACT</b> <i>(Present as many projects as requested by the agency, or 10 projects, if not specified. Complete one Section F for each project.)</i>		20. EXAMPLE PROJECT KEY NUMBER <b>6</b>
21. TITLE AND LOCATION <i>(City and State)</i> <b>EMERALD ESTATES PARK WESTON, FLORIDA</b>	22. YEAR COMPLETED	
	PROFESSIONAL SERVICES <b>2014</b>	CONSTRUCTION <i>(If applicable)</i>

23. PROJECT OWNER'S INFORMATION		
d. PROJECT OWNER <b>CITY OF WESTON</b>	b. POINT OF CONTACT NAME <b>DENISE BARRETT DIRECTOR OF</b>	c. POINT OF CONTACT TELEPHONE NUMBER <b>(954) 385-2000</b>

24. BRIEF DESCRIPTION OF PROJECT AND RELEVANCE TO THIS CONTRACT *(Include scope, size, and cost)*

In 2012 the City of Weston requested that CGA prepare several design options for expansion of the parking area at Emerald Estates Park along with other enhancements. These improvements were in response to the popularity of two existing picnic shelters and the lack of parking for them, as well as a lack of lighting in the park at night. In addition, all of the walkways were replaced, new seating areas were created, and new fitness equipment was provided. CGA provided site design, civil engineering, electrical engineering, landscape and irrigation design, and construction administration services for the project. There were several trees and palms on the site, which were worthy of preservation or relocation. The landscape architecture team worked closely with the civil engineers to site the new parking areas and drainage facilities in such a way so as to preserve as many trees as possible. The resulting effect is that the new improvements to the park look as if they have been there for many years. Furthermore, the new seating and fitness station areas afford many more views to the surrounding lake than previously existed. This has greatly enhanced the user experience of all of the visitors to the park.



25. FIRMS FROM SECTION C INVOLVED WITH THIS PROJECT			
a.	(1) FIRM NAME Calvin, Giordano & Associates	(2) FIRM LOCATION <i>(City and State)</i> Fort Lauderdale, FL	(3) ROLE Surveying, Landscape Architecture Irrigation Design, Civil Engineering Electrical Engineering, Construction Administration
b.			
c.			
d.			

<b>F. EXAMPLE PROJECTS WHICH BEST ILLUSTRATE PROPOSED TEAM'S QUALIFICATIONS FOR THIS CONTRACT</b> <i>(Present as many projects as requested by the agency, or 10 projects, if not specified. Complete one Section F for each project.)</i>		20. EXAMPLE PROJECT KEY NUMBER <b>7</b>
21. TITLE AND LOCATION <i>(City and State)</i> <b>PEACE MOUND PARK WESTON, FLORIDA</b>	22. YEAR COMPLETED	
	PROFESSIONAL SERVICES <b>2014</b>	CONSTRUCTION <i>(If applicable)</i>

23. PROJECT OWNER'S INFORMATION		
e. PROJECT OWNER <b>CITY OF WESTON</b>	b. POINT OF CONTACT NAME <b>DENISE BARRETT DIRECTOR OF COMMUNICATIONS</b>	c. POINT OF CONTACT TELEPHONE NUMBER <b>(954) 385-2000</b>

24. BRIEF DESCRIPTION OF PROJECT AND RELEVANCE TO THIS CONTRACT *(Include scope, size, and cost)*

The impetus for the project lied in addressing existing ADA accessibility issues and bringing the park up to the same high standards of other parks in the city. Another major concern during the design of the project was the preservation of the existing tree canopy and the shaded, passive feeling of the park. Due to the significant amount of re-grading that was necessary in order to make the park ADA accessible, 85 of the nearly 500 existing trees had to be removed, and another 120 trees were relocated on site. To offset this loss, however, 150 new trees have been planted, including 18 specimen Live Oak trees. All of the walkways throughout the park are now accessible by wheelchair, and in many cases, this is made possible through the use of decorative stone retaining walls, which allowed for the preservation of the many existing mature trees within the park. The existing tot lot and swings have been replaced with a new play area that includes play equipment for children of all ages and physical abilities. The main play structure is completely accessible by children in wheelchairs, with a ramp leading up to the main platforms.

Another major feature of the park is that it contains a significant archeological site with artifacts from the Tequesta Indians. Throughout the course of the project, care was taken not to disturb this area, and 8 new bronze plaques with information on the history of the area have been inlaid in the walkways that surround it.



25. FIRMS FROM SECTION C INVOLVED WITH THIS PROJECT

<b>a.</b>	(1) FIRM NAME Calvin, Giordano & Associates	(2) FIRM LOCATION <i>(City and State)</i> Fort Lauderdale, FL	(3) ROLE Park Master Planning, Landscape Design, Irrigation Design, Arboricultural Services, Civil Engineering, Electrical Engineering
<b>b.</b>			
<b>c.</b>			



<b>F. EXAMPLE PROJECTS WHICH BEST ILLUSTRATE PROPOSED TEAM'S QUALIFICATIONS FOR THIS CONTRACT</b> <i>(Present as many projects as requested by the agency, or 10 projects, if not specified. Complete one Section F for each project.)</i>		20. EXAMPLE PROJECT KEY NUMBER <b>8</b>
21. TITLE AND LOCATION <i>(City and State)</i> <b>DANIA JAI-ALAI ONSITE AND OFFSITE Improvements</b> City of Dania Beach, FL	22. YEAR COMPLETED PROFESSIONAL SERVICES <b>2012-Current</b> CONSTRUCTION <i>(If applicable)</i> <b>2012-Current</b>	

23. PROJECT OWNER'S INFORMATION

a. PROJECT OWNER	b. POINT OF CONTACT NAME <b>Joaquin Gerlero</b>	c. POINT OF CONTACT TELEPHONE NUMBER <b>( 954 ) 600-8397</b>
------------------	--	---

24. BRIEF DESCRIPTION OF PROJECT AND RELEVANCE TO THIS CONTRACT *(Include scope, size, and cost)*

CGA provided site development services for the onsite and offsite improvements required to upgrade the existing Jai-alai facility to accommodate a casino. Design, permitting, construction oversight, and closeout for **new offsite water mains, onsite service connections for water and sewer**, site circulation, coordination of utilities, drainage connections, two new entrances to the property, a revamped valet drop-off area as well as offsite roadway improvements to the adjacent city owned Fronton Boulevard were part of the project.

The demand of the upgraded facility and requirements of the developer's agreement with the City required **1,570 LF of 8"** and **1,270 LF of 12"** water main upgrades to the City's transmission mains, new fire hydrants both onsite and offsite, and multiple new service and irrigation connections for the project site. **City, Broward County Health Department and FDOT permitting** and certifications were required for the new water main installation and operation. After TV inspection of the existing onsite sewer system, the new service laterals from the building were tied into the existing onsite and city gravity system. The new **8" sanitary sewer** lines required close coordination with the proposed water main, existing and proposed storm drain laterals, the fire lines, and underground electrical, gas, and communications for the building. Coordination with the client's MEP was required to incorporate rain water lines, sewer lines and grease trap connections appropriately.

CGA's survey department provided design survey, construction stake-out, sketch and legal preparation for numerous required easements, and final survey as-builts.

CGA's Fees: \$766,000 Construction Cost: \$3,000,000



25. FIRMS FROM SECTION C INVOLVED WITH THIS PROJECT

	(1) FIRM NAME	(2) FIRM LOCATION <i>(City and State)</i>	(3) ROLE
a.	Calvin, Giordano & Associates, Inc.	1800 Eller Drive Suite 600 Fort Lauderdale, FL 33316	Surveying, Civil Engineering, Electrical Engineering, Landscape Architecture, Planning
b.			
c.			
d.			

<b>F. EXAMPLE PROJECTS WHICH BEST ILLUSTRATE PROPOSED TEAM'S QUALIFICATIONS FOR THIS CONTRACT</b> <i>(Present as many projects as requested by the agency, or 10 projects, if not specified. Complete one Section F for each project.)</i>		<b>20. EXAMPLE PROJECT KEY NUMBER</b> <b>9</b>
<b>21. TITLE AND LOCATION (City and State)</b> <b>MASTER LIFT STATION NO 8 AND FORCE MAIN DAVIE, FLORIDA</b>	<b>22. YEAR COMPLETED</b>	
	PROFESSIONAL SERVICES <b>2009-2013</b>	CONSTRUCTION <i>(If applicable)</i> <b>2009-2013</b>

**23. PROJECT OWNER'S INFORMATION**

<b>a. PROJECT OWNER</b> <b>Town of Davie</b>	<b>b. POINT OF CONTACT NAME</b> <b>Bruce Taylor</b>	<b>c. POINT OF CONTACT TELEPHONE NUMBER</b> <b>(954) 327-3742</b>
---	--	--

**24. BRIEF DESCRIPTION OF PROJECT AND RELEVANCE TO THIS CONTRACT** *(Include scope, size, and cost)*

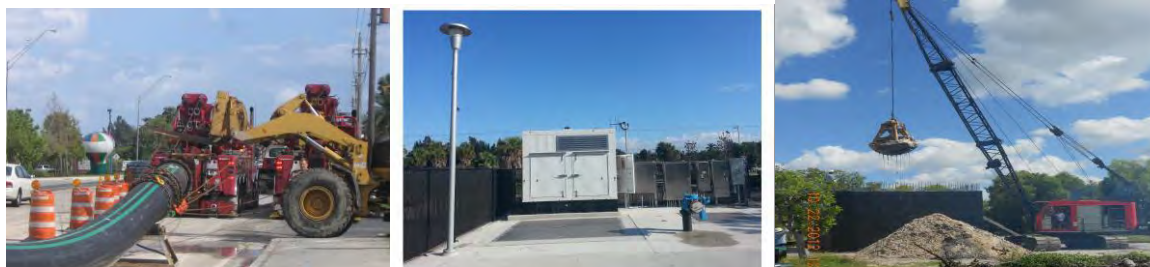
CGA designed a new Master Lift Station No. 8 and force main that serves approximately 50% of the wastewater generated within the Town of Davie's wastewater service area. The existing Lift Station No. 8 included a suction lift pump configuration that was undersized for the current demand and was approaching the end of its design life. The new Lift Station No. 8 transmits approximately 2.0 million gallons per Day (MGD) of wastewater through a 24-inch diameter force main to the existing headworks facility at the Town of Davie's Wastewater Treatment Plant (WWTP). Portions of the new force main were designed using the horizontal directional drilling method for installation to reduce impacts to the surrounding residents and businesses. The project also included improvements to the headworks facility to allow for the increased capacity.

Because of the space restraints at the existing Lift Station No. 8, multiple locations were investigated for the new Lift Station No. 8. CGA coordinated meetings with the adjacent property owners and the Town of Davie's staff to determine the best location to meet the goals of the project. Once the location was agreed upon, CGA provided the legal description and sketch for a new utility easement to allow access for future maintenance.

At the completion of the design and permitting phase of this project, CGA managed all bidding activities to select the most responsive and responsible contractor. After the selection was made, CGA provided construction services to ensure the project was constructed in substantial conformance to the contract documents.

CGA also assisted the Town of Davie with acquiring funding assistance for this project through the State of Florida Clean Water State Revolving Fund (SRF) loan program.

CGA's Fees: \$370,000 Construction Cost: \$3.8 Million



**25. FIRMS FROM SECTION C INVOLVED WITH THIS PROJECT**

	(1) FIRM NAME	(2) FIRM LOCATION (City and State)	(3) ROLE
<b>a.</b>	Calvin, Giordano & Associates, Inc.	1800 Eller Drive, Suite 600 Fort Lauderdale, FL 33316	Civil Engineering, Electrical Engineering, Survey, Construction Administration
<b>b.</b>			
<b>c.</b>			
<b>d.</b>			

<b>F. EXAMPLE PROJECTS WHICH BEST ILLUSTRATE PROPOSED TEAM'S QUALIFICATIONS FOR THIS CONTRACT</b> <i>(Present as many projects as requested by the agency, or 10 projects, if not specified. Complete one Section F for each project.)</i>		<b>20. EXAMPLE PROJECT KEY NUMBER</b> <b>10</b>
<b>21. TITLE AND LOCATION (City and State)</b> <b>DAVIE ROAD PHASE I &amp; PHASE II</b> <b>Davie, Florida</b>	<b>22. YEAR COMPLETED</b>	
	PROFESSIONAL SERVICES <b>2013</b>	CONSTRUCTION <i>(If applicable)</i> <b>2013 - Ongoing</b>

**23. PROJECT OWNER'S INFORMATION**

<b>a. PROJECT OWNER</b> <b>Town of Davie</b>	<b>b. POINT OF CONTACT NAME</b> <b>Laura Borgesi, PE, PSM</b>	<b>c. POINT OF CONTACT TELEPHONE NUMBER</b> <b>(954) 797-1113</b>
---	--	--

**24. BRIEF DESCRIPTION OF PROJECT AND RELEVANCE TO THIS CONTRACT** *(Include scope, size, and cost)*



**Phase I:** This project, which is partially funded by a **FDOT County Incentive Grant**, includes the widening of Davie Road from 4 lanes to 6 lanes between SR 84 and Nova Drive. The scope includes adding a median, an additional lane in each direction, bike lanes, a new signal at Nova Drive and Davie Road to accommodate the wider roadway, pedestrian upgrades, tree relocations and removals, drainage and lighting modifications, utility coordination, and signal modifications at Reese Road to accommodate proposed dual left turns from southbound Davie Road to Reese Road. This corridor, faced with constrained right of way, had to accommodate the widening to six lanes while maintaining right turn lanes where there were existing ones. Permitting was required through the local drainage district, Broward County Highway Construction and Engineering Division, FDOT for work near SR 84, SFWMD, and the Town of Davie. Harmonization with private right of way changes to access due to the median, required coordination with the businesses.



**Phase II:** This phase was funded by a Transportation Enhancement grant through the FDOT District 4 which required it to follow **FDOT LAP** submittal requirements. It consists of improvements to Davie Road from Nova Drive (SW 24th Street) to SW 39th Street. The scope includes construction of a landscaped median, widening existing sidewalks, milling and resurfacing, signing and pavement markings, adding bicycle lanes, drainage, tree relocations and removals, pedestrian lighting and conventional roadway lighting modifications. This project also includes replacing the school zone flashing beacon on Davie Road north of SW 37th Street, signal modifications and guide sign assembly at 39 St. Permitting was required through Central Broward Water Control District (CBWCD), Tindall Hammock Irrigation and Soil Conservation District (THISCD), South Florida Water Management District (SFWMD), Broward County Highway Construction and Engineering Division (BCHCED), Broward County Traffic Engineering Division (BCTED), FDOT and the Town of Davie.

Construction Cost: [Phase I] \$ 3,665,749 (Bid) Phase II: [Letting April 2016] Firm Fees: \$618,858

**25. FIRMS FROM SECTION C INVOLVED WITH THIS PROJECT**

	(1) FIRM NAME	(2) FIRM LOCATION <i>(City and State)</i>	(3) ROLE
<b>a.</b>	<b>Calvin, Giordano &amp; Associates, Inc.</b>	<b>Fort Lauderdale, FL</b>	<b>Prime</b>
<b>b.</b>			
<b>c.</b>			
<b>d.</b>			



**G. KEY PERSONNEL PARTICIPATION IN EXAMPLE PROJECTS**

26. NAMES OF KEY PERSONNEL (From Section E, Block 12)	27. ROLE IN THIS CONTRACT (From Section E, Block 13)	28. EXAMPLE PROJECTS LISTED IN SECTION F (Fill in "Example Projects Key" section below before completing table. Place "X" under project key number for participation in same or similar role.)										
		1	2	3	4	5	6	7	8	9	10	
Curt Keyser, PE	Project Manager/District Engineer		X	X	X	X	X	X	X	X	X	X
Karl Kennedy, PE	Engineering Support	X	X	X	X						X	X
Nicholas Mahon, PE	Engineering Support									X		X
Mohammed Sharifuzzaman	Drainage Design/Modeling		X	X	X	X	X	X	X	X		X
Tammy Cook-Weedon, ASLA, LEED AP BD+C	Landscape Architect		X	X			X	X	X	X	X	X
Bill Tersauro	Landscape Reviewer		X	X	X		X	X				
Sandra Lee, AICP, LEED AP	Environmental Specialist	X	X	X	X		X	X				
Robert (Bob) McSweeney, PE	Construction Services	X	X	X	X		X	X	X	X		
Bruce Bernard	Engineering	X									X	X
Steve Watts, PSM	Surveyor				X			X	X	X	X	X
Robert (Bob) Roush, PE	Electrical Engineer	X	X	X				X	X	X	X	X
Eric Czerniejewski, PE	Traffic Engineering							X	X			X

**26. EXAMPLE PROJECTS KEY**

NO.	TITLE OF EXAMPLE PROJECT (FROM SECTION F)	NO.	TITLE OF EXAMPLE PROJECT (FROM SECTION F)
1	Aqua Isles Community Development District	6	Emerald Estates Park
2	Bonaventure Development District	7	Peace Mound Park
3	Indian Trace Development District	8	Dania Jai-Alai
4	Weston Drainage Improvements	9	Davie Lift Station 8
5	Natalie's Cove Master Drainage Study	10	Davie Rd Phase I and II

---

**H. ADDITIONAL INFORMATION**

---

30. PROVIDE ANY ADDITIONAL INFORMATION REQUESTED BY THE AGENCY. ATTACH ADDITIONAL SHEETS AS NEEDED.

---

**I. AUTHORIZED REPRESENTATIVE**

The foregoing is a statement of facts.

31. SIGNATURE



32. DATE

33. NAME AND TITLE

**PART II – GENERAL QUALIFICATIONS**

*(If a firm has branch offices, complete for each specific branch office seeking work.)*


2a. FIRM (OR BRANCH OFFICE) NAME <b>CALVIN, GIORDANO &amp; ASSOCIATES, INC</b>			3. YEAR ESTABLISHED <b>1937</b>	4. DUNS NUMBER <b>FEIN 65-0013869</b>
2b. STREET <b>1800 ELLER DRIVE, SUITE 600</b>			5. OWNERSHIP a. TYPE <b>CORPORATION</b>	
2c. CITY <b>FORT LAUDERDALE</b>	2d. STATE <b>FL</b>	2e. ZIP CODE <b>33316</b>		
6a. POINT OF CONTACT NAME AND TITLE <b>DENNIS J. GIORDANO, PRESIDENT</b>			7. NAME OF FIRM	
6b. TELEPHONE NUMBER <b>(954) 921-7781</b>	6c. E-MAIL ADDRESS <b>MARKETING@CGASOLUTIONS.COM</b>			
8a. FORMER FIRM NAME(S) (If any) <b>M.E. BERRY &amp; ASSOCIATES/BERRY &amp; CALVIN, INC.</b>			8b. YR. ESTABLISHED <b>1937/1985</b>	8c. DUNS NUMBER <b>044297369</b>

9. EMPLOYEES BY DISCIPLINE				10. PROFILE OF FIRM'S EXPERIENCE AND ANNUAL AVERAGE REVENUE FOR LAST 5 YEARS		
a. Function Code	b. Discipline	c. No. of Employees		a. Profile Code	b. Experience	c. Revenue Index Number <i>(see below)</i>
		(1) FIRM	(2) BRANCH			
02	Administrative	93	88		Codes; Standards, Ordinances	1
10	Chemical Engineers	1	0		Construction Management	4
12	Civil Engineers	26	3		Cost Estimating	4
15	Construction Inspector	33	10		Educational Facilities	3
21	Electrical Engineers	1	0		Environmental Impact Studies, Assessments or Statements	4
39	Landscape Architects	4	0		Highways; Streets; Airfield Paving; Parking Lots	4
47	Planners: Urban/Regional	10	5		Hospital & Medical Facilities	4
52	Sanitary Engineers				Irrigation; Drainage	6
	Permitting Specialists	28	28		Landscape Architecture	4
38	Surveyors	2	1		Office Building; Industrial Parks	3
60	Transportation Engineers	3	0		Planning (Community, Regional Area-wide & State)	4
08	Computer CADD Technicians	5	2		Planning (Site, Installation, and Project)	7
38	Field Surveyors	16	5		Sewage Collection, Treatment and Disposal	4
29	GIS/Data Technology Specialists	10	7		Surveying: Platting; Mapping; Flood Plain Studies	8
	Code Enforcement Specialist	32	32		Storm Water Handling & Facilities	6
24	Environmental Specialists	2	0		Traffic & Transportation Engineering	3
24	Environmental Field Crew		0		Urban Renewals; Community Development	4
39	Landscape Designers / Inspectors	8	2		Water Supply; Treatment and Distribution	8
07	Biologist(s)/Indoor Air Quality	0	0		Zoning; Land Use Studies	3
	<b>Other Employees</b>	96	47			
<b>Total</b>		<b>370</b>	<b>230</b>			

11. ANNUAL AVERAGE PROFESSIONAL SERVICES REVENUES OF FIRM FOR LAST 3 YEARS <i>(Insert revenue index number shown at right)</i>		PROFESSIONAL SERVICES REVENUE INDEX NUMBER			
a. Federal Work	0	1. Less than \$100,000	6. \$2 million to less than \$5 mil	7. \$5 million to less than \$10 mil	8. \$10 million to less than \$25 mil
b. Non-Federal Work	9	3. \$250,000 to less than \$500,000	4. \$500,000 to less than \$1 mil	9. \$25 million to less than \$50 mil	10. \$50 million or greater
<b>c. Total Work</b>	<b>9</b>	5. \$1 million to less than \$2 mil			

**12. AUTHORIZED REPRESENTATIVE**

The foregoing is a statement of facts.

a. SIGNATURE 	b. DATE <b>October 31, 2017</b>
---	------------------------------------

c. NAME AND TITLE  
**DENNIS J. GIORDANO, SENIOR VICE PRESIDENT**