

LEE COUNTY ORDINANCE NO. 10-22

AN ORDINANCE CONSENTING TO AND AUTHORIZING THE MODIFICATION OF BOUNDARIES OF THE MIROMAR LAKES COMMUNITY DEVELOPMENT DISTRICT AS SET FORTH IN FLORIDA STATUTE §190.046; PROVIDING FOR ORDINANCE AUTHORITY; AUTHORIZATION TO MODIFY BOUNDARIES; STATUTORY PROVISIONS GOVERNING THE DISTRICT; AND PROVIDING FOR CONFLICT AND SEVERABILITY, AND AN EFFECTIVE DATE.

WHEREAS, the Miromar Lakes Community Development District was established in accordance with Florida Statutes §190.005(2) resulting in Lee County Ordinance No. 00-17 being adopted by the Lee County Board of County Commissioners on September 12, 2000; and

WHEREAS, the Miromar Lakes Community Development District has petitioned the Lee County Board of County Commissioners for authorization to modify its boundaries pursuant to Florida Statutes §190.046; and

WHEREAS, an established community development district may modify its boundaries only after the Lee County Board of County Commissioners consent to such a modification of district's boundaries; and

WHEREAS, the Miromar Lakes Community Development District specifically requests permission to add the lands set forth in attached Exhibit A to the District, remove the lands set forth in attached Exhibit B from the District and resulting in the new District boundary as set forth in attached Exhibit C; and

WHEREAS, staff review of the request to modify the boundaries of the Miromar Lakes Community Development District and all related information indicates there is no rational basis to refuse the requests set forth in the District's petition; and

WHEREAS, the requested modification of the District's boundaries is not inconsistent and will always be subject to the Lee County Comprehensive Land Use Plan and all related land development regulations and are activities of the District.

NOW, THEREFORE, BE IT ORDAINED BY THE BOARD OF COUNTY COMMISSIONERS OF LEE COUNTY, FLORIDA:

SECTION ONE: ORDINANCE AUTHORITY

This ordinance is adopted in accordance with Florida Statutes Chapter 190 and other applicable provisions of law governing County Ordinances.

SECTION TWO: AUTHORIZATION TO MODIFY BOUNDARIES

The Lee County Board of County Commissioners consent to and authorize modification of The Miromar Lakes Community Development District boundaries as set forth in Florida Statutes §190.046.

Specifically, The Miromar Lakes Community Development District boundaries are to be modified as follows:

1. The lands described in attached Exhibit A, comprising of approximately 46.3 acres, are added to the District.
2. The lands described in attached Exhibit B comprising of approximately 24.9 acres, are removed from the District.
3. The resulting new District boundary is described in attached Exhibit C.

SECTION THREE: STATUTORY PROVISIONS GOVERNING THE DISTRICT

The Miromar Lakes Community Development District will continue to be governed by the provisions of Florida Statutes, Chapter 190.

SECTION FOUR: CONFLICT AND SEVERABILITY

In the event this Ordinance conflicts with any other Lee County ordinance or other applicable law, the more restrictive will apply. If any phase or portion of this Ordinance is held invalid or unconstitutional by any court of competent jurisdiction, such portion will be deemed a separate, distinct and independent provision and such holding will not affect the validity of the remaining portion.

SECTION FIVE: EFFECTIVE DATE

This Ordinance becomes effective upon filing with the Office of the Secretary of the Florida Department of State.

Commissioner Ray Judah made a motion to adopt the foregoing resolution, seconded by Commissioner Frank Mann. The vote was as follows:

District 1	Vacant
Brian Bigelow	Aye
Ray Judah	Aye
Tammara Hall	Aye
Frank Mann	Aye

DULY PASSED AND ADOPTED this 27th day of April, 2010.

ATTEST:
CHARLIE GREEN, CLERK

BOARD OF COUNTY COMMISSIONERS
OF LEE COUNTY, FLORIDA

BY: Marcia Wilson
Deputy Clerk

BY: T Hall
Tammara Hall, Chair



Approved as to form by:

John J. Fredyma
John J. Fredyma
Assistant County Attorney
County Attorney's Office

Attachments: Exhibit A - New acreage added to the District
Exhibit B - Acreage removed from the District
Exhibit C - The new District boundary



950 Encore Way • Naples, Florida 34110 • Phone: 239.254.2000 • Fax: 239.254.2099

HM PROJECT #2003022
12/16/2005
REF. DWG. #B-5678
Page 1 of 3

LEGAL DESCRIPTION PARCEL "A":

A PARCEL OF LAND LOCATED IN A PORTION OF SECTIONS 12 AND 13, TOWNSHIP 46 SOUTH, RANGE 25 EAST, LEE COUNTY, FLORIDA, BEING MORE PARTICULARLY DESCRIBED AS FOLLOWS:

COMMENCE AT THE NORTHWEST CORNER OF SECTION 11, TOWNSHIP 46 SOUTH, RANGE 25 EAST, LEE COUNTY, FLORIDA; THENCE RUN S.89°42'24"E., ALONG THE NORTH LINE OF SAID SECTION 11, FOR A DISTANCE OF 1,994.63 FEET; THENCE RUN S.01°01'21"W., FOR A DISTANCE OF 110.01 FEET TO THE INTERSECTION OF THE EASTERLY RIGHT-OF-WAY LINE OF BEN HILL GRIFFIN PARKWAY (A.K.A. TREELINE DRIVE), A 150.00 FOOT WIDE RIGHT-OF-WAY, RECORDED IN O.R. BOOK 2745, PAGES 1550 THROUGH 1554 OF THE PUBLIC RECORDS OF LEE COUNTY, FLORIDA, WITH THE SOUTHERLY RIGHT-OF-WAY LINE OF ALICO ROAD; THENCE RUN S.89°42'24"E., ALONG THE SOUTHERLY RIGHT-OF-WAY LINE OF ALICO ROAD, FOR A DISTANCE OF 1,049.81 FEET; THENCE RUN S.01°00'21"E., FOR A DISTANCE OF 847.76 FEET; THENCE RUN S.04°19'45"W., FOR A DISTANCE OF 1,091.78 FEET; THENCE RUN S.00°39'26"E., FOR A DISTANCE OF 1,432.24 FEET; THENCE RUN S.00°16'17"E., FOR A DISTANCE OF 606.52 FEET; THENCE RUN N.88°47'46"E., FOR A DISTANCE OF 376.79 FEET; THENCE RUN S.40°48'12"E., FOR A DISTANCE OF 322.81 FEET; THENCE RUN S.19°01'17"E., FOR A DISTANCE OF 249.77 FEET; THENCE RUN S.88°53'28"E., FOR A DISTANCE OF 216.94 FEET; THENCE RUN S.24°26'51"E., FOR A DISTANCE OF 150.17 FEET; THENCE RUN S.77°09'26"E., FOR A DISTANCE OF 573.01 FEET; THENCE RUN S.88°10'13"E., FOR A DISTANCE OF 1,363.08 FEET; THENCE RUN S.19°42'28"E., FOR A DISTANCE OF 157.73 FEET; THENCE RUN S.87°09'14"E., FOR A DISTANCE OF 469.81 FEET; THENCE RUN N.88°02'24"E., FOR A DISTANCE OF 612.22 FEET; THENCE RUN S.21°30'12"E., FOR A DISTANCE OF 81.17 FEET; THENCE RUN N.88°10'30"E., FOR A DISTANCE OF 846.89 FEET TO THE POINT OF BEGINNING OF THE PARCEL OF LAND HEREIN DESCRIBED; THENCE CONTINUE N.88°10'30"E., FOR A DISTANCE OF 1,137.62 FEET; THENCE RUN S.20°09'57"E., FOR A DISTANCE OF 344.09 FEET; THENCE RUN N.89°48'06"W., FOR A DISTANCE OF 1,264.46 FEET; THENCE RUN N.01°46'59"E., FOR A DISTANCE OF 282.53 FEET TO THE POINT OF BEGINNING; CONTAINING 8.364 ACRES, MORE OR LESS.

LEGAL DESCRIPTION PARCEL "B":

A PARCEL OF LAND LOCATED IN A PORTION OF SECTIONS 12 AND 13, TOWNSHIP 46 SOUTH, RANGE 25 EAST, AND A PORTION ON SECTION 18, TOWNSHIP 46 SOUTH, RANGE 26 EAST, LEE COUNTY, FLORIDA, BEING MORE PARTICULARLY DESCRIBED AS FOLLOWS:

COMMENCE AT THE NORTHWEST CORNER OF SECTION 11, TOWNSHIP 46 SOUTH, RANGE 25 EAST, LEE COUNTY, FLORIDA; THENCE RUN S.89°42'24"E., ALONG THE NORTH LINE OF SAID SECTION 11, FOR A DISTANCE OF 1,994.63 FEET; THENCE RUN S.01°01'21"W., FOR A DISTANCE OF 110.01 FEET TO THE INTERSECTION OF THE EASTERLY RIGHT-OF-WAY LINE OF BEN HILL GRIFFIN PARKWAY (A.K.A. TREELINE DRIVE), A 150.00 FOOT WIDE RIGHT-OF-WAY, RECORDED IN O.R. BOOK 2745, PAGES 1550 THROUGH 1554 OF THE PUBLIC RECORDS OF LEE COUNTY, FLORIDA,

Exhibit "A"
Page 2 of 6

HM PROJECT #2003022
12/16/2005
REF. DWG. #B-5678
Page 2 of 3

WITH THE SOUTHERLY RIGHT-OF-WAY LINE OF ALICO ROAD; THENCE RUN S.89°42'24"E., ALONG THE SOUTHERLY RIGHT-OF-WAY LINE OF ALICO ROAD, FOR A DISTANCE OF 1,049.81 FEET; THENCE RUN S.01°00'21"E., FOR A DISTANCE OF 847.76 FEET; THENCE RUN S.04°19'45"W., FOR A DISTANCE OF 1,091.78 FEET; THENCE RUN S.00°39'26"E., FOR A DISTANCE OF 1,432.24 FEET; THENCE RUN S.00°16'17"E., FOR A DISTANCE OF 606.52 FEET; THENCE RUN N.88°47'46"E., FOR A DISTANCE OF 376.79 FEET; THENCE RUN S.40°48'12"E., FOR A DISTANCE OF 322.81 FEET; THENCE RUN S.19°01'17"E., FOR A DISTANCE OF 249.77 FEET; THENCE RUN S.88°53'28"E., FOR A DISTANCE OF 216.94 FEET; THENCE RUN S.24°26'51"E., FOR A DISTANCE OF 150.17 FEET; THENCE RUN S.77°09'26"E., FOR A DISTANCE OF 573.01 FEET; THENCE RUN S.88°10'13"E., FOR A DISTANCE OF 1,363.08 FEET; THENCE RUN S.19°42'28"E., FOR A DISTANCE OF 157.73 FEET; THENCE RUN S.87°09'14"E., FOR A DISTANCE OF 469.81 FEET; THENCE RUN N.88°02'24"E., FOR A DISTANCE OF 612.22 FEET; THENCE RUN S.21°30'12"E., FOR A DISTANCE OF 81.17 FEET; THENCE RUN N.88°10'30"E., FOR A DISTANCE OF 1,984.51 FEET; THENCE RUN S.20°09'57"E., FOR A DISTANCE OF 344.09 FEET TO THE POINT OF BEGINNING OF THE PARCEL OF LAND HEREIN DESCRIBED; THENCE RUN S.89°48'06"E., FOR A DISTANCE OF 80.00 FEET; THENCE RUN S.20°09'57"E., FOR A DISTANCE OF 807.57 FEET; THENCE RUN S.15°43'44"E., FOR A DISTANCE OF 978.45 FEET; THENCE RUN S.89°46'43"E., FOR A DISTANCE OF 516.03 FEET TO THE BEGINNING OF A TANGENTIAL CIRCULAR CURVE, CONCAVE SOUTHWESTERLY; THENCE RUN SOUTHEASTERLY ALONG THE ARC OF SAID CURVE TO THE RIGHT, HAVING A RADIUS OF 500.00 FEET, THROUGH A CENTRAL ANGLE OF 88°55'56", SUBTENDED BY A CHORD OF 700.49 FEET AT A BEARING OF S.45°18'45"E., FOR A DISTANCE OF 776.08 FEET TO THE END OF SAID CURVE; THENCE RUN S.00°50'47"E., FOR A DISTANCE OF 1,447.68 FEET; THENCE RUN S.87°49'53"W., FOR A DISTANCE OF 301.29 FEET; THENCE RUN N.02°10'07"W., FOR A DISTANCE OF 1,120.06 FEET; THENCE RUN S.89°36'23"W., FOR A DISTANCE OF 304.60 FEET; THENCE RUN S.56°15'20"W., FOR A DISTANCE OF 201.37 FEET; THENCE RUN S.56°14'53"W., FOR A DISTANCE OF 16.09 FEET; THENCE RUN S.71°30'39"W., FOR A DISTANCE OF 20.89 FEET; THENCE RUN S.46°03'51"W., FOR A DISTANCE OF 57.11 FEET; THENCE RUN S.49°29'40"W., FOR A DISTANCE OF 20.30 FEET; THENCE RUN S.47°16'30"W., FOR A DISTANCE OF 38.97 FEET; THENCE RUN S.35°34'54"W., FOR A DISTANCE OF 18.90 FEET; THENCE RUN S.30°59'13"W., FOR A DISTANCE OF 26.46 FEET; THENCE RUN S.30°57'50"W., FOR A DISTANCE OF 12.03 FEET; THENCE RUN S.24°14'29"W., FOR A DISTANCE OF 48.25 FEET; THENCE RUN S.47°59'41"W., FOR A DISTANCE OF 29.61 FEET; THENCE RUN S.80°50'39"W., FOR A DISTANCE OF 69.13 FEET; THENCE RUN S.81°26'58"W., FOR A DISTANCE OF 44.56 FEET; THENCE RUN S.85°35'19"W., FOR A DISTANCE OF 86.13 FEET; THENCE RUN S.85°58'36"W., FOR A DISTANCE OF 250.30 FEET; THENCE RUN N.90°00'00"W., FOR A DISTANCE OF 52.88 FEET; THENCE RUN S.85°52'53"W., FOR A DISTANCE OF 61.78 FEET; THENCE RUN S.85°27'17"W., FOR A DISTANCE OF 29.97 FEET; THENCE RUN S.85°27'36"W., FOR A DISTANCE OF 25.27 FEET; THENCE RUN N.87°20'13"W., FOR A DISTANCE OF 13.45 FEET; THENCE RUN N.87°24'51"W., FOR A DISTANCE OF 19.39 FEET; THENCE RUN N.87°22'03"W., FOR A DISTANCE OF 5.44 FEET; THENCE RUN N.24°14'57"E., FOR A DISTANCE OF 30.44 FEET; THENCE RUN N.14°49'53"W., FOR A DISTANCE OF 6.59 FEET; THENCE RUN N.14°31'45"W., FOR A DISTANCE OF 24.66 FEET; THENCE RUN N.02°11'29"E., FOR A DISTANCE OF 62.11 FEET; THENCE RUN S.76°56'48"E., FOR A DISTANCE OF 27.40 FEET; THENCE RUN S.82°50'47"E., FOR A DISTANCE OF 15.56 FEET; THENCE RUN N.18°18'13"E., FOR A DISTANCE OF 25.87 FEET; THENCE RUN N.04°51'39"W., FOR A DISTANCE OF 21.39 FEET; THENCE RUN N.11°39'28"W., FOR A DISTANCE OF 34.33 FEET; THENCE RUN N.06°54'40"W., FOR A DISTANCE OF 1.91 FEET; THENCE RUN N.19°49'36"E., FOR A DISTANCE OF 438.44 FEET; THENCE RUN S.89°47'01"E., FOR A DISTANCE OF 582.85 FEET; THENCE RUN N.00°07'13"W., FOR A DISTANCE OF 16.49 FEET; THENCE RUN N.25°52'55"W., FOR A DISTANCE OF

Exhibit "A"
Page 3 of 6

HM PROJECT #2003022
.12/16/2005
REF. DWG. #B-5678
Page 3 of 3

362.91 FEET; THENCE RUN N.15°43'44"W., FOR A DISTANCE OF 1,222.01 FEET; THENCE RUN N.20°09'57"W., FOR A DISTANCE OF 832.50 FEET, TO THE POINT OF BEGINNING; CONTAINING 37.439 ACRES, MORE OR LESS.

THIS PROPERTY SUBJECT TO EASEMENTS, RESERVATIONS OR RESTRICTIONS OF RECORD.

BEARINGS SHOWN HEREON REFER TO THE NORTH LINE OF SECTION 11, TOWNSHIP 46 SOUTH, RANGE 25 EAST, OF LEE COUNTY, FLORIDA AS BEING S.89°42'24"E

THIS SKETCH AND LEGAL HAS BEEN PREPARED BASED UPON THE BANK ENGINEERING, INC. PARCEL DESCRIPTIONS AS SHOWN ON DRAWINGS 1155SR, SHEETS 1 THROUGH DATED 4/10/00, DRAWINGS 1418SR AND 1418SR COVER DATED 7/13/00, AND DRAWINGS 1155_11.44-AC_PARCELS_SK_1.

HOLE MONTES, INC.
CERTIFICATE OF AUTHORIZATION NUMBER LB 1772

BY Thomas M. Murphy P.S.M. #5628
THOMAS M. MURPHY STATE OF FLORIDA



GRAPHIC SCALE



(IN FEET)
1 inch = 200 FT

RECIPROCAL INGRESS,
EGRESS AND UTILITY
EASEMENT ON BOOK 4161
PGS 3825-4002

CURVE TABLE						
CURVE	RADIUS	LENGTH	CHORD	BEARING	DELTA	DTA
C1	1325.00'	701.87'	693.74'	S 18°00'21" E	30°21'17"	

LEGEND

- POC POINT OF COMMENCEMENT
- POB POINT OF BEGINNING
- FCM FOUND CONCRETE MONUMENT 4" X 4"
- FIR FOUND 5/8" IRON ROD LB#1772
- SIR SET 5/8" IRON ROD LB#1772
- BOC BACK OF CURB
- CSW CONCRETE SIDEWALK
- BGL BURIED GAS LINE MARKER
- UTS UNITED TELEPHONE SERVICE
- CB CATCH BASIN
- TOB TOP OF BACK
- TOS TOE OF SLOPE
- ME MITERED END
- ELEVATION

LINE TABLE		
LINE	DIRECTION	DISTANCE
L1	N 34°42'21" W	174.02'
L2	N 47°43'18" E	388.08'
L3	N 30°22'53" E	388.57'
L4	N 24°48'00" E	221.23'
L5	S 00°49'42" E	191.12'



950 Encore Way
Naples, Florida 34110
Phone: (941) 254-2000
Florida Certificate of
Authorization No. 1772

NOT VALID WITHOUT
THE SIGNATURE AND
SEAL OF A FLORIDA
LICENSED SURVEYOR
AND MAPPER.

METHODIST CHURCH
BOUNDARY SURVEY

A PARCEL OF LAND LOCATED IN A
PORTION OF SECTION 23,
TOWNSHIP 46 SOUTH, RANGE 25 EAST

LEE COUNTY FLORIDA

LEGAL DESCRIPTION:

A PARCEL OF LAND LOCATED IN A PORTION OF SECTION 23, TOWNSHIP 46 SOUTH, RANGE 25 EAST, LEE COUNTY, FLORIDA, BEING MORE PARTICULARLY DESCRIBED AS FOLLOWS:

COMMENCE AT SOUTHEAST CORNER OF SECTION 23, TOWNSHIP 46 SOUTH, RANGE 25 EAST, LEE COUNTY, FLORIDA; THENCE-RUN N.89°44'39"W, ALONG THE SOUTH LINE OF SAID SECTION 23, FOR A DISTANCE OF 681.54 FEET TO A POINT ON THE WESTERLY RIGHT-OF-WAY LINE OF BEN HILL GRIFFIN PARKWAY (A.K.A. TRELLINE DRIVE), A 150.00 FOOT WIDE RIGHT-OF-WAY, RECORDED IN O.R. BOOK 2745, PAGES 1350 THROUGH 1354 OF THE PUBLIC RECORDS OF LEE COUNTY, FLORIDA; THENCE RUN N.00°45'43"W, ALONG THE WESTERLY RIGHT-OF-WAY LINE OF SAID BEN HILL GRIFFIN PARKWAY, FOR A DISTANCE OF 409.07 FEET TO THE POINT OF BEGINNING OF THE PARCEL OF LAND HEREIN DESCRIBED; THENCE RUN N.89°44'39"W, FOR A DISTANCE OF 770.25 FEET; THENCE RUN N.34°42'21"W, FOR A DISTANCE OF 174.02 FEET; THENCE RUN N.47°43'18"E, FOR A DISTANCE OF 388.08 FEET; THENCE RUN N.30°22'53"E, FOR A DISTANCE OF 388.57 FEET; THENCE RUN N.58°45'00"E, FOR A DISTANCE OF 221.73 FEET TO A POINT ON THE WESTERLY RIGHT-OF-WAY LINE OF SAID BEN HILL GRIFFIN PARKWAY AND TO A POINT ON A CIRCULAR CURVE, CONCAVE WESTERLY, WHOSE RADIUS POINT BEARS S.58°46'00"W, A DISTANCE OF 1,325.00 FEET THEREFROM; THENCE RUN SOUTHERLY, ALONG THE WESTERLY RIGHT-OF-WAY LINE OF SAID BEN HILL GRIFFIN PARKWAY AND ALONG THE ARC OF SAID CURVE TO THE RIGHT, HAVING A RADIUS OF 1,325.00 FEET, THROUGH A CENTRAL ANGLE OF 30°21'17", SUBTENDED BY A CHORD OF 693.79 FEET AT A BEARING OF S.18°00'21"E, FOR A DISTANCE OF 701.87 FEET TO THE END OF SAID CURVE; THENCE RUN S.00°49'43"E, ALONG THE WESTERLY RIGHT-OF-WAY LINE OF SAID BEN HILL GRIFFIN PARKWAY, FOR A DISTANCE OF 191.12 FEET TO THE POINT OF BEGINNING, CONTAINING 10.523 ACRES, MORE OR LESS.

NOTES:

THIS PROPERTY IS SUBJECT TO EASEMENTS, RESERVATIONS OR RESTRICTIONS OF RECORD. O.R. BOOK 3530 PAGE 404 AS SHOWN ON SCHEDULE B SECTION 2 EXCEPTIONS, OF THE CHICAGO TITLE INSURANCE COMPANY COMMITMENT FOR TITLE INSURANCE, HAVING ORDER NO. 240200454 WITH AN EFFECTIVE DATE OF SEPTEMBER 25, 2003 AT 5:00 PM AND AN UPDATED EFFECTIVE DATE OF JANUARY 8, 2004 AT 8:00AM HAS BEEN SHOWN ON THIS SURVEY.

BEARINGS SHOWN HEREON REFER TO THE SOUTH LINE OF SECTION 23, TOWNSHIP 46 SOUTH, RANGE 25 EAST, OF LEE COUNTY, FLORIDA AS BEING N.89°44'39"W.

THIS PROPERTY DOES NOT LIE WITHIN A FLOOD HAZARD AREA AS SHOWN ON THE "FEDERAL EMERGENCY MANAGEMENT AGENCY" (FEMA) FLOOD INSURANCE RATE MAP (FIRM) HAVING COMMUNITY PANEL NUMBER 125124 0475 B. THIS PANEL HAS NOT BEEN PRINTED, BUT IS SHOWN ON THE FIRM MAP INDEX DATED MAY 5, 2003.

ELEVATIONS REFER TO THE NATIONAL GEODETIC VERTICAL DATUM (N.G.V.D.) OF 1929

SITE BENCHMARK: BM 613-18-02, NORTHEAST CORNER OF HEADWALL OF BRIDGE ON BEN HILL GRIFFIN PARKWAY; ELEV. = 25.18

THIS SURVEY IS NOT VALID WITHOUT THE SIGNATURE AND ORIGINAL RAISED SEAL OF A FLORIDA LICENSED SURVEYOR AND MAPPER.

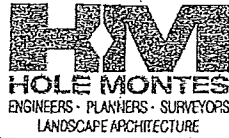
CERTIFIED TO: MROMAR LAKES L.L.C.
THE FLORIDA UNITED METHODIST FOUNDATION INC.
CLARK, CAMPBELL & MANNING, P.A.

I HEREBY CERTIFY THAT THIS SKETCH OF THE HEREON DESCRIBED PROPERTY WAS SURVEYED UNDER MY DIRECTION ON 05/06/2002. I FURTHER CERTIFY THAT THIS SURVEY MEETS THE MINIMUM TECHNICAL STANDARDS FOR LAND SURVEYING IN THE STATE OF FLORIDA PURSUANT TO CHAPTER 610-17-5, F.A.C.

HOLE MONTES, INC.
CERTIFICATE OF AUTHORIZATION NUMBER LB 1772

BY *Thomas M. Murphy* P.S.M. #5628
THOMAS M. MURPHY STATE OF FLORIDA

REVISION No.	DESCRIPTION	DATE
	ADD O.R.BOOK AND PAGE	2/8/2004
	ADD O.R.BOOK AND PAGE/ FLOOD ZONE	2/1/2004
ADD CERTIFIED TO		
10/03		
DRAWN BY:	DATE 8/02	SECTION 23
TH	F.B. 826	TOWNSHIP 46
CHECKED BY:	PAGE 45-52	RANGE 25
TMM	REFERENCE METBNDR-2	B-3832-2



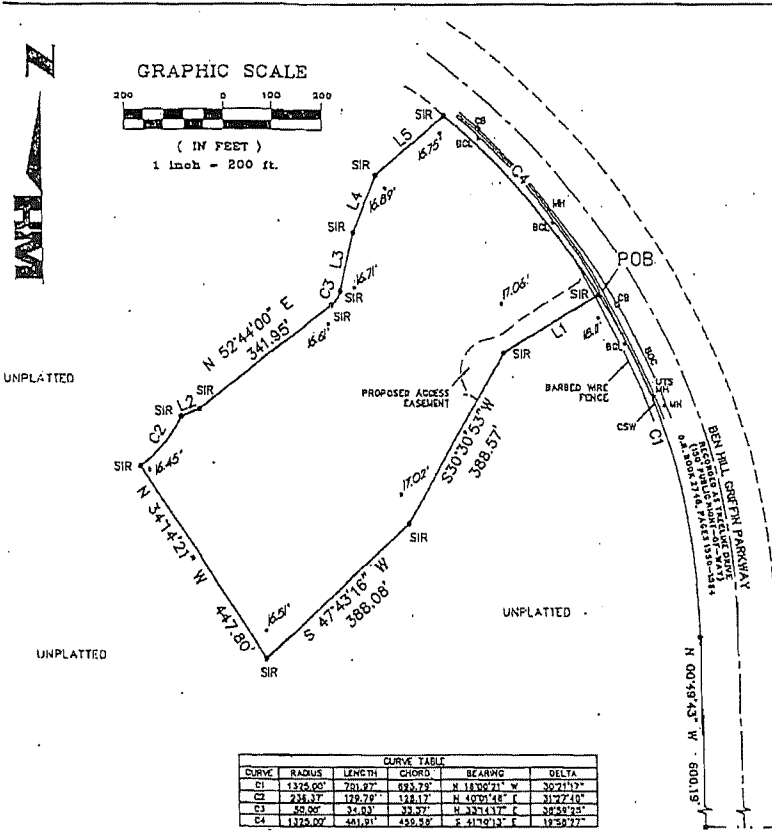
950 Encore Way • Naples, Florida 34110 • Phone: 239.254.2000 • Fax: 239.254.2075

HM PROJECT # 2003022
October 9, 2008
REF. DWG. B-3832-2

LEGAL DESCRIPTION:

A PARCEL OF LAND LOCATED IN A PORTION OF SECTION 23, TOWNSHIP 46 SOUTH, RANGE 25 EAST, LEE COUNTY, FLORIDA, BEING MORE PARTICULARLY DESCRIBED AS FOLLOWS:

COMMENCE AT SOUTHEAST CORNER OF SECTION 23, TOWNSHIP 46 SOUTH, RANGE 25 EAST, LEE COUNTY, FLORIDA; THENCE RUN N.89°44'39"W. ALONG THE SOUTH LINE OF SAID SECTION 23, FOR A DISTANCE OF 651.54 FEET TO A POINT ON THE WESTERLY RIGHT-OF-WAY LINE OF BEN HILL GRIFFIN PARKWAY (A.K.A. TREELINE DRIVE), A 150.00 FOOT WIDE RIGHT-OF-WAY, RECORDED IN O.R. BOOK 2745, PAGES 1550 THROUGH 1554 OF THE PUBLIC RECORDS OF LEE COUNTY, FLORIDA; THENCE RUN N.00°49'43"W. ALONG THE WESTERLY RIGHT-OF-WAY LINE OF SAID BEN HILL GRIFFIN PARKWAY, FOR A DISTANCE OF 409.07 FEET TO THE POINT OF BEGINNING OF THE PARCEL OF LAND HEREIN DESCRIBED; THENCE RUN N.89°44'39"W., FOR A DISTANCE OF 770.25 FEET; THENCE RUN N.34°14'21"W., FOR A DISTANCE OF 174.09 FEET; THENCE RUN N.47°43'16"E., FOR A DISTANCE OF 388.08 FEET; THENCE RUN N.30°30'53"E., FOR A DISTANCE OF 388.57 FEET; THENCE RUN N.58°49'00"E., FOR A DISTANCE OF 221.73 FEET TO A POINT ON THE WESTERLY RIGHT-OF-WAY LINE OF SAID BEN HILL GRIFFIN PARKWAY AND TO A POINT ON A CIRCULAR CURVE, CONCAVE WESTERLY, WHOSE RADIUS POINT BEARS S.58°49'00"W., A DISTANCE OF 1,325.00 FEET THEREFROM; THENCE RUN SOUTHERLY, ALONG THE WESTERLY RIGHT-OF-WAY LINE OF SAID BEN HILL GRIFFIN PARKWAY AND ALONG THE ARC OF SAID CURVE TO THE RIGHT, HAVING A RADIUS OF 1,325.00 FEET, THROUGH A CENTRAL ANGLE OF 30°21'17", SUBTENDED BY A CHORD OF 693.79 FEET AT A BEARING OF S.16°00'21"E., FOR A DISTANCE OF 701.97 FEET TO THE END OF SAID CURVE; THENCE RUN S.00°49'43"E. ALONG THE WESTERLY RIGHT-OF-WAY LINE OF SAID BEN HILL GRIFFIN PARKWAY, FOR A DISTANCE OF 191.12 FEET TO THE POINT OF BEGINNING; CONTAINING 10.523 ACRES, MORE OR LESS.



LINE	DIRECTION	DISTANCE
L1	S 58°42'00" W	221.71'
L2	N 42°32'35" E	39.89'
L3	N 32°43'55" E	119.95'
L4	N 22°31'31" E	117.44'
L5	N 50°22'22" E	181.72'

CURVE	RADIUS	LENGTH	CHORD	BEARING	DELTA
C1	1324.00'	751.87'	683.79'	N 18°02'21" W	30°21'17"
C2	236.37'	178.79'	128.17'	N 09°01'46" E	31°27'40"
C3	82.98'	34.03'	33.27'	N 28°11'17" E	30°52'25"
C4	1322.02'	441.81'	458.88'	E 41°12'12" E	19°52'22"

- LEGEND**
- POC POINT OF COMMENCEMENT
 - POB POINT OF BEGINNING
 - FCM FOUND CONCRETE MONUMENT 4" X 4"
 - FIR FOUND 5/8" IRON ROD LB#1772
 - SIR SET 5/8" IRON ROD LB#1772
 - BOC BACK OF CURB
 - CSW CONCRETE SIDEWALK
 - BGL BURIED GAS LINE MARKER
 - MH MAN HOLE
 - UTS UNITED TELEPHONE SERVICE
 - CB CATCH BASIN
 - ELEVATION



950 Encore Way
Naples, Florida 34110
Phone: (941) 254-2000
Florida Certificate of
Authorization No. 1772

LEGAL DESCRIPTION:
A PARCEL OF LAND LOCATED IN A PORTION OF SECTION 23, TOWNSHIP 46 SOUTH, RANGE 25 EAST, LEE COUNTY, FLORIDA, BEING MORE PARTICULARLY DESCRIBED AS FOLLOWS:

COMMENCE AT SOUTHEAST CORNER OF SECTION 23, TOWNSHIP 46 SOUTH, RANGE 25 EAST, LEE COUNTY, FLORIDA; THENCE RUN N89°44'39"W ALONG THE SOUTH LINE OF SAID SECTION 23, FOR A DISTANCE OF 651.54 FEET TO A POINT ON THE WESTERLY RIGHT-OF-WAY LINE OF BEN HILL GRIFFIN PARKWAY (A.K.A. 'TRELKINE DRIVE'), A 150.00 FOOT WIDE RIGHT-OF-WAY, RECORDED IN O.R. BOOK 2745, PAGES 1550 THROUGH 1554 OF THE PUBLIC RECORDS OF LEE COUNTY, FLORIDA; THENCE RUN N.00°46'43"W, ALONG THE WESTERLY RIGHT-OF-WAY LINE OF SAID BEN HILL GRIFFIN PARKWAY, FOR A DISTANCE OF 600.19 FEET TO THE BEGINNING OF A TANGENTIAL CIRCULAR CURVE, CONCAVE WESTERLY; THENCE RUN NORTHERLY ALONG THE WESTERLY RIGHT-OF-WAY LINE OF SAID BEN HILL GRIFFIN PARKWAY AND ALONG THE ARC OF SAID CURVE TO THE LEFT, HAVING A RADIUS OF 1,325.00 FEET, THROUGH A CENTRAL ANGLE OF 30°21'17", SUBTENDED BY A CHORD OF 693.79 FEET AT A BEARING OF N18°02'21"W, FOR A DISTANCE OF 701.57 FEET TO THE POINT OF BEGINNING OF THE PARCEL OF LAND HEREIN DESCRIBED; THENCE RUN S.58°42'00"W, FOR A DISTANCE OF 221.73 FEET; THENCE RUN S.30°30'53"W, FOR A DISTANCE OF 388.57 FEET; THENCE RUN S.47°43'18"W, FOR A DISTANCE OF 388.08 FEET; THENCE RUN N.34°14'21"W, FOR A DISTANCE OF 447.80 FEET TO A POINT ON A CIRCULAR CURVE, CONCAVE NORTHWESTERLY, WHOSE RADIUS POINT BEARS N.34°14'21"W, A DISTANCE OF 236.37 FEET THEREFROM; THENCE RUN NORTHEASTERLY ALONG THE ARC OF SAID CURVE TO THE LEFT, HAVING A RADIUS OF 236.37 FEET, THROUGH A CENTRAL ANGLE OF 31°27'40", SUBTENDED BY A CHORD OF 128.17 FEET AT A BEARING OF N.40°01'46"E, FOR A DISTANCE OF 129.79 FEET TO THE END OF SAID CURVE; THENCE RUN N.27°53'35"E, FOR A DISTANCE OF 39.89 FEET; THENCE RUN N.52°44'00"E, FOR A DISTANCE OF 341.85 FEET TO THE BEGINNING OF A TANGENTIAL CIRCULAR CURVE, CONCAVE NORTHWESTERLY; THENCE RUN NORTHEASTERLY ALONG THE ARC OF SAID CURVE TO THE LEFT, HAVING A RADIUS OF 50.00 FEET, THROUGH A CENTRAL ANGLE OF 38°59'25", SUBTENDED BY A CHORD OF 33.37 FEET AT A BEARING OF N.33°14'17"E, FOR A DISTANCE OF 34.03 FEET TO THE END OF SAID CURVE; THENCE RUN N.13°44'38"E, FOR A DISTANCE OF 119.08 FEET; THENCE RUN N.22°51'31"E, FOR A DISTANCE OF 117.44 FEET; THENCE RUN N.50°22'22"E, FOR A DISTANCE OF 181.72 FEET TO A POINT ON THE WESTERLY RIGHT-OF-WAY LINE OF SAID BEN HILL GRIFFIN PARKWAY AND TO A POINT ON A CIRCULAR CURVE, CONCAVE SOUTHWESTERLY, WHOSE RADIUS POINT BEARS S.38°50'33"W, A DISTANCE OF 1,325.00 FEET THEREFROM; THENCE RUN SOUTHEASTERLY ALONG THE WESTERLY RIGHT-OF-WAY LINE OF SAID BEN HILL GRIFFIN PARKWAY AND ALONG THE ARC OF SAID CURVE TO THE RIGHT, HAVING A RADIUS OF 1,325.00 FEET; THROUGH A CENTRAL ANGLE OF 18°38'27", SUBTENDED BY A CHORD OF 459.88 FEET AT A BEARING OF S.41°10'13"E, FOR A DISTANCE OF 461.91 FEET TO THE POINT OF BEGINNING; CONTAINING 9.345 ACRES, MORE OR LESS.

NOTES:
THIS PROPERTY IS SUBJECT TO EASEMENTS, RESERVATIONS OR RESTRICTIONS OF RECORD.
BEARINGS SHOWN HEREON REFER TO THE SOUTH LINE OF SECTION 23, TOWNSHIP 46 SOUTH, RANGE 25 EAST, OF LEE COUNTY, FLORIDA AS BEING N.89°44'39"W.
ABSTRACT OF TITLE HAS NOT BEEN REVIEWED BY SURVEYOR.
ELEVATIONS REFER TO THE NATIONAL GEODETIC DATUM (N.G.V.D.) OF 1928
SITE BENCHMARK: BM 813-18-02, NORTHEAST CORNER OF HEADWALL OF BRIDGE ON BEN HILL GRIFFIN PARKWAY; ELEV. = 25.18
THIS SURVEY IS NOT VALID WITHOUT THE SIGNATURE AND ORIGINAL RAISED SEAL OF A FLORIDA LICENSED SURVEYOR AND MAPPER.
CERTIFIED TO: MIRONAR LAKES LLC.

I HEREBY CERTIFY THAT THIS SKETCH OF THE HEREON DESCRIBED PROPERTY WAS SURVEYED UNDER MY DIRECTION ON 05/06/2002. I FURTHER CERTIFY THAT THIS SURVEY MEETS THE MINIMUM TECHNICAL STANDARDS FOR LAND SURVEYING IN THE STATE OF FLORIDA PURSUANT TO CHAPTER 610-17-6, F.A.C.

HOLE MONTES, INC.
CERTIFICATE OF AUTHORIZATION NUMBER LB 1772.
BY *Thomas L. Murphy* P.S.M. #5628
THOMAS L. MURPHY STATE OF FLORIDA

POC
SOUTHEAST CORNER
SECTION 23-46-25
BASIS OF BEARING
SOUTH LINE SECTION 23-46-25
N 89°44'39" W 651.54'
23/24
26/25
FCM NO ID

NOT VALID WITHOUT THE SIGNATURE AND THE ORIGINAL RAISED SEAL OF A FLORIDA LICENSED SURVEYOR AND MAPPER.

LUTHERAN CHURCH BOUNDARY SURVEY
A PARCEL OF LAND LOCATED IN A PORTION OF SECTION 23, TOWNSHIP 46 SOUTH, RANGE 25 EAST
LEE COUNTY FLORIDA

REVISION No.	DESCRIPTION	DATE	
2	REVERSE BEARING IN TABLE	11/02/06	
1	REVISED C4 IN LEGAL DESCRIPTION	02/08/06	
DRAWN BY:	DATE 8/02	SECTION 23	PROJECT No.
TH	F.B. 826	TOWNSHIP 46	02.541
CHECKED BY:	PAGE 45-52	RANGE 25	DRAWING No.
TMM	REFERENCE	LTHBDR	B-3834-1



950 Encore Way • Naples, Florida 34110 • Phone: 239.254.2000 • Fax: 239.254.2075

HM PROJECT #2003022
October 9, 2008
REF. DWG. B-3834-1

LEGAL DESCRIPTION:

A PARCEL OF LAND LOCATED IN A PORTION OF SECTION 23, TOWNSHIP 46 SOUTH, RANGE 25 EAST, LEE COUNTY, FLORIDA, BEING MORE PARTICULARLY DESCRIBED AS FOLLOWS:

COMMENCE AT SOUTHEAST CORNER OF SECTION 23, TOWNSHIP 46 SOUTH, RANGE 25 EAST, LEE COUNTY, FLORIDA; THENCE RUN N89°44'39"W ALONG THE SOUTH LINE OF SAID SECTION 23, FOR A DISTANCE OF 651.54 FEET TO A POINT ON THE WESTERLY RIGHT-OF-WAY LINE OF BEN HILL GRIFFIN PARKWAY (A.K.A. TREELINE DRIVE), A 150.00 FOOT WIDE RIGHT-OF-WAY, RECORDED IN O.R. BOOK 2745, PAGES 1550 THROUGH 1554 OF THE PUBLIC RECORDS OF LEE COUNTY, FLORIDA; THENCE RUN N.00°49'43"W., ALONG THE WESTERLY RIGHT-OF-WAY LINE OF SAID BEN HILL GRIFFIN PARKWAY, FOR A DISTANCE OF 600.19 FEET TO THE BEGINNING OF A TANGENTIAL CIRCULAR CURVE, CONCAVE WESTERLY; THENCE RUN NORTHERLY ALONG THE WESTERLY RIGHT-OF-WAY LINE OF SAID BEN HILL GRIFFIN PARKWAY AND ALONG THE ARC OF SAID CURVE TO THE LEFT, HAVING A RADIUS OF 1,325.00 FEET, THROUGH A CENTRAL ANGLE OF 30°21'17", SUBTENDED BY A CHORD OF 693.79 FEET AT A BEARING OF N.16°00'21"W., FOR A DISTANCE OF 701.97 FEET TO THE POINT OF BEGINNING OF THE PARCEL OF LAND HEREIN DESCRIBED; THENCE RUN S.58°49'00"W., FOR A DISTANCE OF 221.73 FEET; THENCE RUN S.30°30'53"W., FOR A DISTANCE OF 388.57 FEET; THENCE RUN S.47°43'16"W., FOR A DISTANCE OF 388.08 FEET; THENCE RUN N.34°14'21"W., FOR A DISTANCE OF 447.80 FEET TO A POINT ON A CIRCULAR CURVE, CONCAVE NORTHWESTERLY, WHOSE RADIUS POINT BEARS N.34°14'22"W., A DISTANCE OF 236.37 FEET THEREFROM; THENCE RUN NORTHEASTERLY ALONG THE ARC OF SAID CURVE TO THE LEFT, HAVING A RADIUS OF 236.37 FEET, THROUGH A CENTRAL ANGLE OF 31°27'40", SUBTENDED BY A CHORD OF 128.17 FEET AT A BEARING OF N.40°01'48"E., FOR A DISTANCE OF 129.79 FEET TO THE END OF SAID CURVE; THENCE RUN N.67°53'35"E., FOR A DISTANCE OF 39.60 FEET; THENCE RUN N.52°44'00"E., FOR A DISTANCE OF 341.95 FEET TO THE BEGINNING OF A TANGENTIAL CIRCULAR CURVE, CONCAVE NORTHWESTERLY; THENCE RUN NORTHEASTERLY ALONG THE ARC OF SAID CURVE TO THE LEFT, HAVING A RADIUS OF 50.00 FEET, THROUGH A CENTRAL ANGLE OF 38°59'25", SUBTENDED BY A CHORD OF 33.37 FEET AT A BEARING OF N.33°14'17"E., FOR A DISTANCE OF 34.03 FEET TO THE END OF SAID CURVE; THENCE RUN N.13°44'35"E., FOR A DISTANCE OF 118.05 FEET; THENCE RUN N.22°51'31"E., FOR A DISTANCE OF 117.46 FEET; THENCE RUN N.50°32'52"E., FOR A DISTANCE OF 181.72 FEET TO A POINT ON THE WESTERLY RIGHT-OF-WAY LINE OF SAID BEN HILL GRIFFIN PARKWAY AND TO A POINT ON A CIRCULAR CURVE, CONCAVE SOUTHWESTERLY, WHOSE RADIUS POINT BEARS S.38°50'33"W., A DISTANCE OF 1,325.00 FEET THEREFROM; THENCE RUN SOUTHEASTERLY ALONG THE WESTERLY RIGHT-OF-WAY LINE OF SAID BEN HILL GRIFFIN PARKWAY AND ALONG THE ARC OF SAID CURVE TO THE RIGHT, HAVING A RADIUS OF 1,325.00 FEET, THROUGH A CENTRAL ANGLE OF 19°58'27", SUBTENDED BY A CHORD OF 459.58 FEET AT A BEARING OF S.41°10'13"E., FOR A DISTANCE OF 461.91 FEET, TO THE POINT OF BEGINNING; CONTAINING 9.345 ACRES, MORE OR LESS.

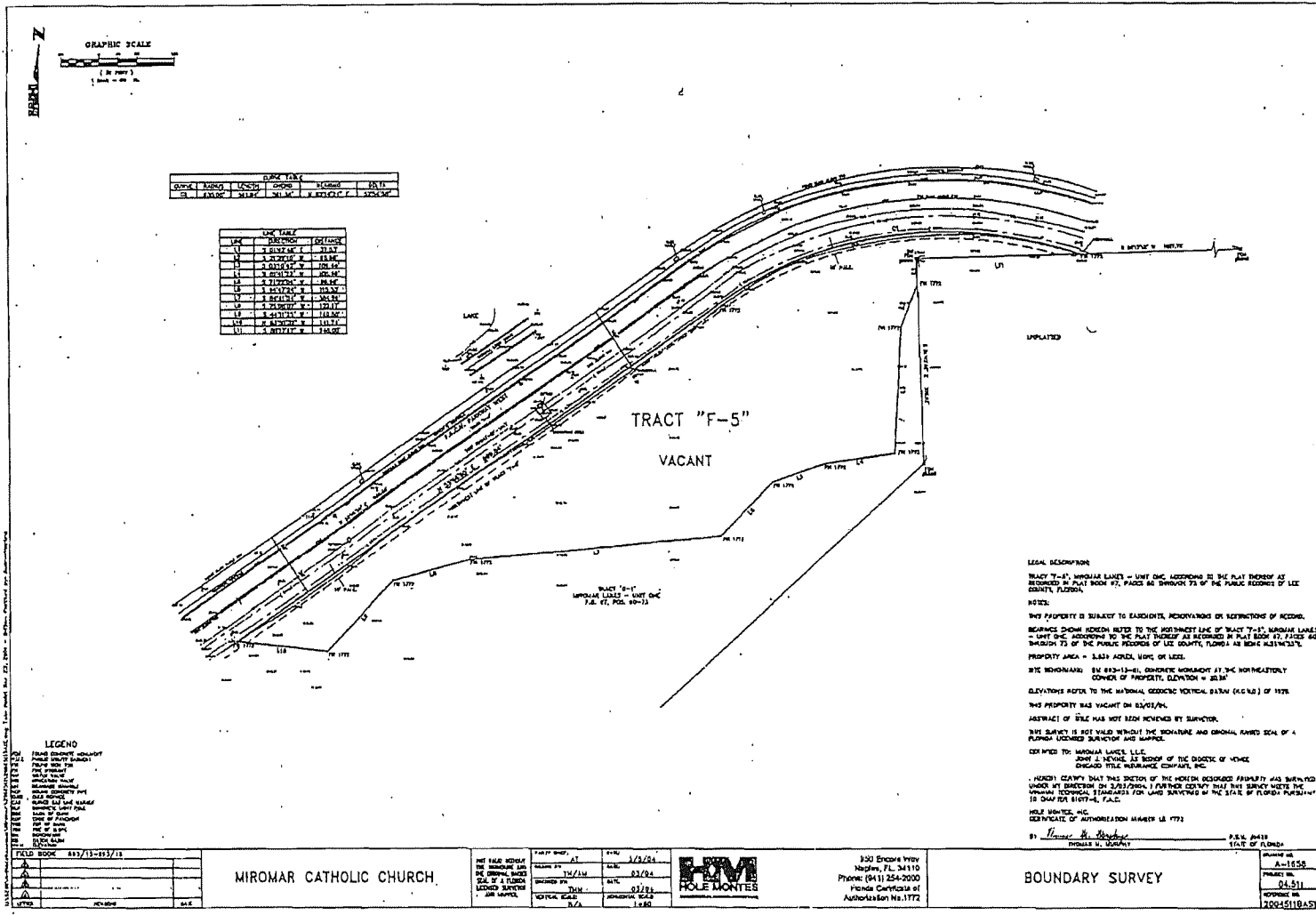


EXHIBIT B
(Page 5 of 6)



EXHIBIT B
(Page 6 of 6)

950 Encore Way • Naples, Florida 34110 • Phone: 239.254.2000 • Fax: 239.254.2075

HM PROJECT #2003022
October 9, 2008
REF. DWG. A-1658

LEGAL DESCRIPTION:

TRACT "F-5", MIROMAR LAKES - UNIT ONE, ACCORDING TO THE PLAT THEREOF AS RECORDED IN PLAT BOOK 67, PAGES 60 THROUGH 73 OF THE PUBLIC RECORDS OF LEE COUNTY, FLORIDA.



LEGAL DESCRIPTION:

A PARCEL OF LAND LOCATED IN A PORTION OF MIROMAR LAKES UNIT ONE, ACCORDING TO THE PLAT THEREOF AS RECORDED IN PLAT BOOK 67 AT PAGES 60 THROUGH 73 AND A PORTION OF MIROMAR LAKES UNIT III AS ACCORDING TO THE PLAT THEREOF AS RECORDED IN PLAT BOOK 71, AT PAGES 67 THROUGH 70, AND A PORTION OF MIROMAR LAKES UNIT V - ISOLA BELLA ACCORDING TO THE PLAT THEREOF AS RECORDED IN PLAT BOOK 74 AT PAGES 9 THROUGH 12 AND A PORTION OF MIROMAR LAKES UNIT VI - BELLAMARE AS RECORDED IN PLAT BOOK 74 AT PAGES 17-19 AND A PORTION OF MIROMAR LAKES UNIT IX - ANACAPRI AND CASTELLI ACCORDING TO THE PLAT THEREOF AS RECORDED IN PLAT BOOK 82 AT PAGE 71 AND A PORTION OF MIROMAR LAKES UNIT X AS RECORDED AT INSTRUMENT NUMBER 2005000010918 AND A PORTION OF MIROMAR LAKES UNIT XI - PENINSULA AS RECORDED AT INSTRUMENT NUMBER 2006000456819 AND A PORTION OF MIROMAR LAKES UNIT XII - PENINSULA, PHASE TWO AS RECORDED AT INSTRUMENT NUMBER 2006000463425 AND A PORTION OF MIROMAR LAKES UNIT XII-A AS RECORDED AT INSTRUMENT NUMBER 2008000138703 AND A PORTION OF MIROMAR LAKES UNIT XII-B AS RECORDED AT INSTRUMENT NUMBER 2008000208819 AND A PORTION OF MIROMAR LAKES UNIT XIII - COSTA AMALFI AS RECORDED AT INSTRUMENT NUMBER 2008000338718 ALL OF THE PUBLIC RECORDS OF LEE COUNTY, FLORIDA AND A PORTION OF SECTIONS 11, 12, 13 AND 14, TOWNSHIP 46 SOUTH, RANGE 25 EAST, AND A PORTION ON SECTION 18, TOWNSHIP 46 SOUTH, RANGE 24 EAST, LEE COUNTY, FLORIDA, BEING MORE PARTICULARLY DESCRIBED AS FOLLOWS:

COMMENCE AT THE NORTHWEST CORNER OF SECTION 11, TOWNSHIP 46 SOUTH, RANGE 25 EAST, LEE COUNTY, FLORIDA; THENCE RUN S.89°42'24"E., ALONG THE NORTH LINE OF SAID SECTION 11, FOR A DISTANCE OF 1,994.63 FEET; THENCE RUN S.01°01'21"W., FOR A DISTANCE OF 110.01 FEET TO THE POINT OF BEGINNING OF THE PARCEL OF LAND HEREIN DESCRIBED; THE SAME BEING THE INTERSECTION OF THE EASTERLY RIGHT-OF-WAY LINE OF BEN HILL GRIFFIN PARKWAY (A.K.A. TREELINE DRIVE), A 150.00 FOOT WIDE RIGHT-OF-WAY, RECORDED IN O.R. BOOK 2745, PAGES 1550 THROUGH 1554 OF THE PUBLIC RECORDS OF LEE COUNTY, FLORIDA, WITH THE SOUTHERLY RIGHT-OF-WAY LINE OF ALICO ROAD; THENCE RUN S.89°42'24"E., ALONG THE SOUTHERLY RIGHT-OF-WAY LINE OF ALICO ROAD, FOR A DISTANCE OF 1,049.81 FEET; THENCE RUN S.01°00'21"E., FOR A DISTANCE OF 847.76 FEET; THENCE RUN S.04°19'45"W., FOR A DISTANCE OF 1,091.78 FEET; THENCE RUN S.00°39'26"E., FOR A DISTANCE OF 1,432.24 FEET; THENCE RUN S.00°16'17"E., FOR A DISTANCE OF 606.52 FEET; THENCE RUN N.88°47'46"E., FOR A DISTANCE OF 376.79 FEET; THENCE RUN S.40°48'12"E., FOR A DISTANCE OF 322.81 FEET; THENCE RUN S.19°01'17"E., FOR A DISTANCE OF 249.77 FEET; THENCE RUN S.88°53'28"E., FOR A DISTANCE OF 216.94 FEET; THENCE RUN S.24°26'51"E., FOR A DISTANCE OF 150.17 FEET; THENCE RUN

Exhibit "C"
(Page 3 of 8)

HM Project 2003022
April 28, 2010
Ref. Dwg. # A-1820-1
Page 2 of 4

S.77°09'26"E., FOR A DISTANCE OF 573.01 FEET; THENCE RUN S.88°10'13"E., FOR A DISTANCE OF 1,363.08 FEET; THENCE RUN S.19°42'28"E., FOR A DISTANCE OF 157.73 FEET; THENCE RUN S.87°09'14"E., FOR A DISTANCE OF 469.81 FEET; THENCE RUN N.88°02'24"E., FOR A DISTANCE OF 612.22 FEET; THENCE RUN S.21°30'12"E., FOR A DISTANCE OF 81.17 FEET; THENCE RUN N.88°10'30"E., FOR A DISTANCE OF 1,984.51 FEET; THENCE RUN S.20°09'57"E., FOR A DISTANCE OF 344.09 FEET; THENCE RUN S.89°48'06"E., FOR A DISTANCE OF 80.00 FEET; THENCE RUN S.20°09'57"E., FOR A DISTANCE OF 807.57 FEET; THENCE RUN S.15°43'44"E., FOR A DISTANCE OF 978.45 FEET; THENCE RUN S.89°46'43"E., FOR A DISTANCE OF 516.04 FEET TO THE BEGINNING OF A TANGENTIAL CIRCULAR CURVE, CONCAVE SOUTHWESTERLY; THENCE RUN SOUTHEASTERLY ALONG THE ARC OF SAID CURVE TO THE RIGHT, HAVING A RADIUS OF 500.00 FEET, THROUGH A CENTRAL ANGLE OF 88°55'56", SUBTENDED BY A CHORD OF 700.49 FEET AT A BEARING OF S.45°18'45"E., FOR A DISTANCE OF 776.08 FEET TO THE END OF SAID CURVE; THENCE RUN S.00°50'47"E., FOR A DISTANCE OF 1,447.68 FEET; THENCE RUN S.87°49'53"W., FOR A DISTANCE OF 301.29 FEET; THENCE RUN N.02°10'07"W., FOR A DISTANCE OF 1,120.06 FEET; THENCE RUN S.89°36'23"W., FOR A DISTANCE OF 304.60 FEET; THENCE RUN S.56°15'20"W., FOR A DISTANCE OF 201.37 FEET; THENCE RUN S.56°14'53"W., FOR A DISTANCE OF 16.09 FEET; THENCE RUN S.71°30'39"W., FOR A DISTANCE OF 20.89 FEET; THENCE RUN S.46°03'51"W., FOR A DISTANCE OF 57.11 FEET; THENCE RUN S.49°29'40"W., FOR A DISTANCE OF 20.30 FEET; THENCE RUN S.47°16'30"W., FOR A DISTANCE OF 38.97 FEET; THENCE RUN S.35°34'54"W., FOR A DISTANCE OF 18.90 FEET; THENCE RUN S.30°59'13"W., FOR A DISTANCE OF 26.46 FEET; THENCE RUN S.30°57'50"W., FOR A DISTANCE OF 12.03 FEET; THENCE RUN S.24°14'29"W., FOR A DISTANCE OF 48.25 FEET; THENCE RUN S.47°59'41"W., FOR A DISTANCE OF 29.61 FEET; THENCE RUN S.80°50'39"W., FOR A DISTANCE OF 69.13 FEET; THENCE RUN S.81°26'58"W., FOR A DISTANCE OF 44.56 FEET; THENCE RUN S.85°35'19"W., FOR A DISTANCE OF 86.13 FEET; THENCE RUN S.85°58'36"W., FOR A DISTANCE OF 250.30 FEET; THENCE RUN N.90°00'00"W., FOR A DISTANCE OF 52.88 FEET; THENCE RUN S.85°52'53"W., FOR A DISTANCE OF 61.78 FEET; THENCE RUN S.85°27'17"W., FOR A DISTANCE OF 29.97 FEET; THENCE RUN S.85°27'36"W., FOR A DISTANCE OF 25.27 FEET; THENCE RUN N.87°20'13"W., FOR A DISTANCE OF 13.45 FEET; THENCE RUN N.87°24'51"W., FOR A DISTANCE OF 19.39 FEET; THENCE RUN N.87°22'03"W., FOR A DISTANCE OF 5.44 FEET; THENCE RUN N.24°14'57"E., FOR A DISTANCE OF 30.44 FEET; THENCE RUN N.14°49'53"W., FOR A DISTANCE OF 6.59 FEET; THENCE RUN N.14°31'45"W., FOR A DISTANCE OF 24.66 FEET; THENCE RUN N.02°11'29"E., FOR A DISTANCE OF 62.11 FEET; THENCE RUN S.76°56'48"E., FOR A DISTANCE OF 27.40 FEET; THENCE RUN S.82°50'47"E., FOR A DISTANCE OF 15.56 FEET; THENCE RUN N.18°18'13"E., FOR A DISTANCE OF 25.87 FEET; THENCE RUN N.04°51'39"W., FOR A DISTANCE OF 21.39 FEET; THENCE RUN N.11°39'28"W., FOR A DISTANCE OF 34.33 FEET; THENCE RUN N.06°54'40"W., FOR A DISTANCE OF 1.91 FEET; THENCE RUN N.19°49'36"E., FOR A DISTANCE OF 438.44 FEET; THENCE RUN S.89°46'48"E.,

Exhibit "C"
(Page 4 of 8)

HM Project 2003022
April 28, 2010
Ref. Dwg. # A-1820-1
Page 3 of 4

FOR A DISTANCE OF 224.89 FEET; THENCE RUN N.00°43'41"W., FOR A DISTANCE OF 176.03 FEET;
THENCE RUN N.89°21'30"W., FOR A DISTANCE OF 1,846.96 FEET; THENCE RUN N.06°34'37"W., FOR A
DISTANCE OF 526.70 FEET; THENCE RUN N.01°50'22"W., FOR A DISTANCE OF 1185.30 FEET, TO A POINT
ON A CIRCULAR CURVE, CONCAVE SOUTHERLY; WHOSE RADIUS POINT BEARS S.30°19'48"W.,
THEREFROM; THENCE RUN WESTERLY, ALONG THE ARC OF SAID CURVE TO THE LEFT, HAVING A RADIUS
OF 81.50 FEET, THROUGH A CENTRAL ANGLE OF 43°52'14", SUBTENDED BY A CHORD OF 60.89 FEET AT
A BEARING OF N.81°36'20"W., FOR A DISTANCE OF 62.40 FEET TO THE END OF SAID CURVE; THENCE
RUN S.76°27'33"W., FOR A DISTANCE OF 131.31 FEET, TO THE BEGINNING OF A TANGENTIAL CIRCULAR
CURVE, CONCAVE NORTHERLY; THENCE RUN WESTERLY, ALONG THE ARC OF SAID CURVE TO THE RIGHT,
HAVING A RADIUS OF 179.00 FEET, THROUGH A CENTRAL ANGLE OF 53°57'20", SUBTENDED BY A
CHORD OF 162.40 FEET AT A BEARING OF N.76°33'47"W., FOR A DISTANCE OF 168.56 FEET TO THE END
OF SAID CURVE; THENCE RUN N.15°40'27"E., FOR A DISTANCE OF 72.39 FEET; THENCE RUN
N.79°32'52"W., FOR A DISTANCE OF 536.78 FEET; THENCE RUN N.41°43'09"W., FOR A DISTANCE OF
264.16 FEET; THENCE RUN S.80°32'44"W., FOR A DISTANCE OF 908.56 FEET; THENCE RUN
S.85°56'39"W., FOR A DISTANCE OF 710.97 FEET; THENCE RUN N.88°44'59"W., FOR A DISTANCE OF
176.94 FEET; THENCE RUN S.09°48'24"W., FOR A DISTANCE OF 488.79 FEET; THENCE RUN S.81°56'19"E.,
FOR A DISTANCE OF 145.26 FEET; THENCE RUN S.00°34'39"E., FOR A DISTANCE OF 820.49 FEET; THENCE
RUN S.59°07'28"W., FOR A DISTANCE OF 349.34 FEET; THENCE RUN S.86°00'53"W., FOR A DISTANCE OF
1,140.64 FEET; THENCE RUN N.06°38'29"W., FOR A DISTANCE OF 427.54 FEET; THENCE RUN
N.01°46'33"E., FOR A DISTANCE OF 839.75 FEET; THENCE RUN S.85°52'30"W., FOR A DISTANCE OF
934.90 FEET; THENCE RUN S.04°59'30"W., FOR A DISTANCE OF 714.95 FEET; THENCE RUN
S.05°05'22"W., FOR A DISTANCE OF 483.90 FEET; THENCE RUN S.63°55'14"W., FOR A DISTANCE OF
291.35 FEET; THENCE RUN S.39°15'46"W., FOR A DISTANCE OF 187.54 FEET; THENCE RUN N.89°07'51"E.,
FOR A DISTANCE OF 3,150.87 FEET; THENCE RUN S.19°52'03"W., FOR A DISTANCE OF 56.89 FEET;
THENCE RUN S.03°10'23"E., FOR A DISTANCE OF 430.66 FEET; THENCE RUN S.88°17'12"W., FOR A
DISTANCE OF 779.72 FEET TO A POINT ON A CIRCULAR CURVE, CONCAVE SOUTHERLY, WHOSE RADIUS
POINT BEARS S.18°41'52"W., A DISTANCE OF 630.00 FEET THEREFROM; THENCE RUN WESTERLY ALONG
THE ARC OF SAID CURVE TO THE LEFT, HAVING A RADIUS OF 630.00 FEET, THROUGH A CENTRAL ANGLE
OF 52°54'57", SUBTENDED BY A CHORD OF 561.38 FEET AT A BEARING OF S.82°14'24"W., FOR A
DISTANCE OF 581.84 FEET TO THE END OF SAID CURVE; THENCE RUN S.55°46'55"W., FOR A DISTANCE
OF 899.84 FEET; THENCE RUN S.83°50'32"E., FOR A DISTANCE OF 141.74 FEET; THENCE RUN
N.44°11'25"E., FOR A DISTANCE OF 149.80 FEET; THENCE RUN N.75°08'07"E., FOR A DISTANCE OF
122.17 FEET; THENCE RUN N.84°41'54"E., FOR A DISTANCE OF 384.96 FEET; THENCE RUN N.44°47'24"E.,
FOR A DISTANCE OF 115.33 FEET; THENCE RUN N.71°22'04"E., FOR A DISTANCE OF 86.96 FEET; THENCE

Exhibit "C"
(Page 5 of 8)

HM Project 2003022
April 28, 2010
Ref. Dwg. # A-1820-1
Page 4 of 4

RUN N.81°41'22"E., FOR A DISTANCE OF 108.46 FEET; THENCE RUN N.03°10'42"E., FOR A DISTANCE OF 189.44 FEET; THENCE RUN N.21°39'10"E., FOR A DISTANCE OF 68.66 FEET; THENCE RUN S.01°42'48"E., FOR A DISTANCE OF 269.12 FEET; THENCE RUN S.47°45'12"W., FOR A DISTANCE OF 1,504.06 FEET; THENCE RUN S.88°27'56"W., FOR A DISTANCE OF 1,780.04 FEET TO A POINT ON THE EASTERLY RIGHT-OF-WAY LINE OF SAID BEN HILL GRIFFIN PARKWAY; THENCE RUN N.03°31'24"W., ALONG THE EASTERLY RIGHT-OF-WAY OF SAID BEN HILL GRIFFIN PARKWAY, FOR A DISTANCE OF 3,304.77 FEET TO THE BEGINNING OF A TANGENTIAL CIRCULAR CURVE, CONCAVE EASTERLY; THENCE RUN NORTHERLY ALONG THE EASTERLY RIGHT-OF-WAY LINE OF SAID BEN HILL GRIFFIN PARKWAY AND ALONG THE ARC OF SAID CURVE TO THE RIGHT, HAVING A RADIUS OF 2,925.00 FEET, THROUGH A CENTRAL ANGLE OF 23°44'13", SUBTENDED BY A CHORD OF 1,203.14 FEET AT A BEARING OF N.08°20'43"E., FOR A DISTANCE OF 1,211.79 FEET TO THE END OF SAID CURVE; THENCE RUN N.20°12'49"E., ALONG THE EASTERLY RIGHT-OF-WAY LINE OF SAID BEN HILL GRIFFIN PARKWAY, FOR A DISTANCE OF 473.55 FEET TO THE BEGINNING OF A TANGENTIAL CIRCULAR CURVE, CONCAVE WESTERLY; THENCE RUN NORTHERLY ALONG THE EASTERLY RIGHT-OF-WAY LINE OF SAID BEN HILL GRIFFIN PARKWAY AND ALONG THE ARC OF SAID CURVE TO THE LEFT, HAVING A RADIUS OF 10,075.00 FEET, THROUGH A CENTRAL ANGLE OF 19°11'28", SUBTENDED BY A CHORD OF 3,358.85 FEET AT A BEARING OF N.10°37'05"E., FOR A DISTANCE OF 3,374.60 FEET TO THE END OF SAID CURVE; THENCE RUN N.01°01'21"E., ALONG THE EASTERLY RIGHT-OF-WAY LINE OF SAID BEN HILL GRIFFIN PARKWAY, FOR A DISTANCE OF 909.75 FEET TO THE POINT OF BEGINNING; CONTAINING 617.146 ACRES, MORE OR LESS.



950 Encore Way • Naples, Florida 34110 • Phone: 239.254.2000 • Fax: 239.254.2099

HM-PROJECT #2003022
10/3/2005
REF. DWG. #A-1801
Page 1 of 2

LEGAL DESCRIPTION:

A PARCEL OF LAND LOCATED IN A PORTION OF MIROMAR LAKES UNIT 4 ACCORDING TO THE PLAT THEREOF AS RECORDED IN PLAT BOOK 70 AT PAGES 48 THROUGH 51, AND A PORTION OF MIROMAR LAKES UNIT VIII – PORTO ROMANO, ACCORDING TO THE PLAT THEREOF AS RECORDED IN PLAT BOOK 82, PAGES 7 THROUGH 10 OF THE PUBLIC RECORDS OF LEE COUNTY, FLORIDA AND A PORTION OF SECTIONS 10, 11, 14, 15 AND 23, TOWNSHIP 46 SOUTH, RANGE 25 EAST, LEE COUNTY, FLORIDA, BEING MORE PARTICULARLY DESCRIBED AS FOLLOWS:

COMMENCE AT THE SOUTHEAST CORNER OF SECTION 23, TOWNSHIP 46 SOUTH, RANGE 25 EAST, LEE COUNTY, FLORIDA; THENCE RUN N.89°44'39"W., ALONG THE SOUTH LINE OF SAID SECTION 23, FOR A DISTANCE OF 651.54 FEET TO A POINT ON THE WESTERLY RIGHT-OF-WAY LINE OF BEN HILL GRIFFIN PARKWAY (A.K.A. TREELINE DRIVE), A 150.00 FOOT WIDE RIGHT-OF-WAY; RECORDED IN O.R. BOOK 2745, PAGES 1550 THROUGH 1554 OF THE PUBLIC RECORDS OF LEE COUNTY, FLORIDA AND TO THE POINT OF BEGINNING OF THE PARCEL OF LAND HEREIN DESCRIBED; THENCE CONTINUE N.89°44'39"W., ALONG THE SOUTH LINE OF SAID SECTION 23, FOR A DISTANCE OF 2,921.79 FEET TO A POINT ON THE EASTERLY RIGHT-OF-WAY LINE OF INTERSTATE 75; THENCE RUN N.18°17'51"W., ALONG THE EASTERLY RIGHT-OF-WAY LINE OF INTERSTATE 75, FOR A DISTANCE OF 955.62 FEET TO THE BEGINNING OF A TANGENTIAL CIRCULAR CURVE, CONCAVE EASTERLY; THENCE RUN NORTHERLY ALONG THE EASTERLY RIGHT-OF-WAY LINE OF INTERSTATE 75 AND ALONG THE ARC OF SAID CURVE TO THE RIGHT, HAVING A RADIUS OF 17,026.80 FEET, THROUGH A CENTRAL ANGLE OF 04°04'42", SUBTENDED BY A CHORD OF 1,211.72 FEET AT A BEARING OF N.16°15'30"W., FOR A DISTANCE OF 1,211.97 FEET TO THE END OF SAID CURVE; THENCE RUN N.14°13'09"W., ALONG THE EASTERLY RIGHT-OF-WAY LINE OF INTERSTATE 75, FOR A DISTANCE OF 9,126.68 FEET; THENCE RUN N.76°08'54"E., FOR A DISTANCE OF 527.61 FEET; THENCE RUN N.79°14'37"E., FOR A DISTANCE OF 501.77 FEET; THENCE RUN N.84°36'26"E., FOR A DISTANCE OF 384.54 FEET; THENCE RUN S.85°27'53"E., FOR A DISTANCE OF 381.51 FEET; THENCE RUN S.74°31'06"E., FOR A DISTANCE OF 209.92 FEET TO A POINT ON THE WESTERLY RIGHT-OF-WAY LINE OF SAID BEN HILL GRIFFIN PARKWAY, THE SAME BEING A POINT ON A CIRCULAR CURVE, CONCAVE EASTERLY, WHOSE RADIUS POINT BEARS S.69°47'11"E., A DISTANCE OF 3,075.00 FEET THEREFROM; THENCE RUN SOUTHERLY ALONG THE WESTERLY RIGHT-OF-WAY LINE OF SAID BEN HILL GRIFFIN PARKWAY AND ALONG THE ARC OF SAID CURVE TO THE LEFT, HAVING A RADIUS OF 3,075.00 FEET, THROUGH A CENTRAL ANGLE OF 23°44'14", SUBTENDED BY A CHORD OF 1,264.85 FEET AT A BEARING OF S.08°20'42"W., FOR A DISTANCE OF 1,273.94 FEET TO THE END OF SAID CURVE; THENCE RUN S.03°31'24"E., ALONG THE WESTERLY RIGHT-OF-WAY LINE OF SAID BEN HILL GRIFFIN PARKWAY, FOR A DISTANCE OF 3,887.79 FEET TO THE BEGINNING OF A TANGENTIAL CIRCULAR CURVE, CONCAVE EASTERLY; THENCE RUN SOUTHERLY ALONG THE WESTERLY RIGHT-OF-WAY LINE OF SAID BEN HILL GRIFFIN PARKWAY AND ALONG THE ARC OF SAID CURVE TO THE LEFT, HAVING A RADIUS OF 2,000.00 FEET, THROUGH A CENTRAL ANGLE OF 20°33'03", SUBTENDED BY A CHORD OF 713.52 FEET AT A BEARING OF S.13°47'56"E., FOR A DISTANCE OF 717.36 FEET TO THE END OF SAID CURVE; THENCE RUN S.24°04'27"E., ALONG THE WESTERLY RIGHT-OF-WAY LINE OF SAID BEN HILL GRIFFIN PARKWAY, FOR A DISTANCE OF 1,593.09 FEET TO THE BEGINNING OF A TANGENTIAL CIRCULAR CURVE, CONCAVE NORTHEASTERLY; THENCE RUN SOUTHEASTERLY ALONG THE WESTERLY RIGHT-OF-WAY LINE OF SAID BEN HILL GRIFFIN PARKWAY AND ALONG THE ARC OF SAID CURVE TO THE LEFT, HAVING A RADIUS OF 2,875.00 FEET, THROUGH A CENTRAL ANGLE OF 31°16'49", SUBTENDED BY A CHORD OF 1,550.16 FEET AT A BEARING OF S.39°42'52"E., FOR A

W:\2003\2003022\CDDI\WEST.dwg

EXHIBIT C
(Page 7 of 8)

DISTANCE OF 1,569.58 FEET TO THE END OF SAID CURVE; THENCE RUN S.55°21'16"E., ALONG THE WESTERLY RIGHT-OF-WAY LINE OF SAID BEN HILL GRIFFIN PARKWAY, FOR A DISTANCE OF 1,684.71 FEET TO THE BEGINNING OF A TANGENTIAL CIRCULAR CURVE, CONCAVE SOUTHWESTERLY; THENCE RUN SOUTHEASTERLY ALONG THE WESTERLY RIGHT-OF-WAY LINE OF SAID BEN HILL GRIFFIN PARKWAY AND ALONG THE ARC OF SAID CURVE TO THE RIGHT, HAVING A RADIUS OF 1,325.00 FEET, THROUGH A CENTRAL ANGLE OF 04°11'49", SUBTENDED BY A CHORD OF 97.04 FEET AT A BEARING OF S.53°15'21"E., FOR A DISTANCE OF 97.06 FEET TO THE END OF SAID CURVE; THENCE RUN S.50°32'52"W., FOR A DISTANCE OF 181.72 FEET; THENCE RUN S.22°51'31"W., FOR A DISTANCE OF 117.46 FEET; THENCE RUN S.13°44'35"W., FOR A DISTANCE OF 118.05 FEET TO THE BEGINNING OF A TANGENTIAL CIRCULAR CURVE, CONCAVE NORTHWESTERLY; THENCE RUN SOUTHWESTERLY ALONG THE ARC OF SAID CURVE TO THE RIGHT, HAVING A RADIUS OF 50.00 FEET, THROUGH A CENTRAL ANGLE OF 38°59'25", SUBTENDED BY A CHORD OF 33.37 FEET AT A BEARING OF S.33°14'17"W., FOR A DISTANCE OF 34.03 FEET TO THE END OF SAID CURVE; THENCE RUN S.52°44'00"W., FOR A DISTANCE OF 341.95 FEET; THENCE RUN S.67°53'35"W., FOR A DISTANCE OF 39.60 FEET TO A POINT ON A CIRCULAR CURVE, CONCAVE NORTHWESTERLY, WHOSE RADIUS POINT BEARS N.65°42'02"W., A DISTANCE OF 236.37 FEET THEREFROM; THENCE RUN SOUTHWESTERLY ALONG THE ARC OF SAID CURVE TO THE RIGHT, HAVING A RADIUS OF 236.37 FEET, THROUGH A CENTRAL ANGLE OF 31°27'41", SUBTENDED BY A CHORD OF 128.17 FEET AT A BEARING OF S.40°01'49"W., FOR A DISTANCE OF 129.79 FEET TO THE END OF SAID CURVE; THENCE RUN S.34°14'21"E., FOR A DISTANCE OF 621.89 FEET; THENCE RUN S.89°44'39"E., FOR A DISTANCE OF 770.25 FEET TO A POINT ON THE WESTERLY RIGHT-OF-WAY LINE OF SAID BEN HILL GRIFFIN PARKWAY; THENCE RUN S.00°49'43"E., ALONG THE WESTERLY RIGHT-OF-WAY LINE OF SAID BEN HILL GRIFFIN PARKWAY, FOR A DISTANCE OF 409.08 FEET TO THE POINT OF BEGINNING; CONTAINING 376.779 ACRES, MORE OR LESS.

THIS PROPERTY IS SUBJECT TO EASEMENTS, RESERVATIONS OR RESTRICTIONS OF RECORD.

BEARINGS SHOWN HEREON REFER TO THE SOUTH LINE OF SECTION 23, TOWNSHIP 46 SOUTH, RANGE 25 EAST, OF LEE COUNTY, FLORIDA AS BEING N.89°44'39"W.

THIS SKETCH AND LEGAL HAS BEEN PREPARED BASED UPON THE BANKS ENGINEERING, INC. PARCEL DESCRIPTIONS AS SHOWN ON DRAWINGS 1155SR, SHEETS 1 THROUGH 4, DATED 4/10/2000

HOLE MONTES, INC.
CERTIFICATE OF AUTHORIZATION NUMBER LB 1772

BY Thomas M. Murphy P.S.M. #5628
THOMAS M. MURPHY STATE OF FLORIDA

STATE OF FLORIDA

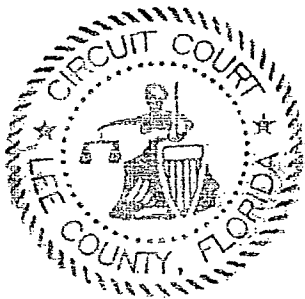
COUNTY OF LEE

I Charlie Green, Clerk of Circuit Court, Lee County, Florida, and ex-Officio Clerk of the Board of County Commissioners, Lee County, Florida, do hereby certify that the above and foregoing, is a true and correct copy of Ordinance No. 10-22, adopted by the Board of Lee County Commissioners, at their meeting held on the 27th day of April, 2010 and same filed in the Clerk's Office.

Given under my hand and seal, at Fort Myers, Florida, this 3rd day of May, 2010.

CHARLIE GREEN,
Clerk of Circuit Court
Lee County, Florida

By: Marcia Wilson
Deputy Clerk



May 3, 2010

Liz Cloud
Department of State
Bureau of Administrative Code
The RA Gray Building
500 South Bronough St.
Tallahassee, FL 32399-0250

RE: Ordinance No. 10-22
Lee County, Florida

Dear Ms. Cloud:

Enclosed is a certified copy of Ordinance No. 10-22, adopted by the Board of Lee County Commissioners on April 27, 2010.

Please use the enclosed envelope when sending your acknowledgment to our office. Thank you for your cooperation.

Sincerely,

Charlie Green, Clerk



Marcia Wilson
Deputy Clerk

Enclosure



FLORIDA DEPARTMENT of STATE

CHARLIE CRIST
Governor

STATE LIBRARY AND ARCHIVES OF FLORIDA

KURT S. BROWNING
Secretary of State

May 4, 2010

Honorable Charlie Green
Clerk of Court
Lee County
Post Office Box 2469
Fort Myers, Florida 33902-2469

RECEIVED
MINUTES OFFICE
2010 MAY -7 PM 12:49

Attention: Ms. Marcia Wilson, Deputy Clerk

Dear Mr. Green:

Pursuant to the provisions of Section 125.66, Florida Statutes, this will acknowledge receipt of your letter dated May 3, 2010 and certified copy of Lee County Ordinance No. 10-22, which was filed in this office on May 4, 2010.

Sincerely,

Liz Cloud
Program Administrator

LC/srd

DIRECTOR'S OFFICE

R.A. Gray Building • 500 South Bronough Street • Tallahassee, Florida 32399-0250
850.245.6600 • FAX: 850.245.6735 • TDD: 850.922.4085 • <http://dlis.dos.state.fl.us>

COMMUNITY DEVELOPMENT
850.245.6600 • FAX: 850.245.6643

STATE LIBRARY OF FLORIDA
850.245.6600 • FAX: 850.245.6744

STATE ARCHIVES OF FLORIDA
850.245.6700 • FAX: 850.488.4894

LEGISLATIVE LIBRARY SERVICE
850.488.2812 • FAX: 850.488.9879

RECORDS MANAGEMENT SERVICES
850.245.6750 • FAX: 850.245.6795

ADMINISTRATIVE CODE AND WEEKLY
850.245.6270 • FAX: 850.245.6282