

***MIROMAR LAKES
COMMUNITY DEVELOPMENT DISTRICT***

**Monthly Asset Manager's Report
November 2025**

Prepared For:

James Ward
District Manager

Prepared By:

Richard Freeman



Calvin, Giordano & Associates, Inc.

A SAFEbuilt® COMPANY

CGA Project No. 13-5692

December 1, 2025

**MIROMAR LAKES
COMMUNITY DEVELOPMENT DISTRICT**

TABLE OF CONTENTS

I.	PURPOSE	3
II.	CURRENT ASSET UPDATES	3
III.	LOCATION MAP.....	8

**MIROMAR LAKES
COMMUNITY DEVELOPMENT DISTRICT**

I. PURPOSE

The purpose of this report is to provide the District Manager with an update on recent inspection-related activities. We will continue to provide updated monthly inspection reports on the status of ongoing field activities.

II. CURRENT ASSET UPDATES

1. Lake Maintenance & Landscaping
2. Fishery
3. Cane Toad Program
4. Location Map

1. Lake Maintenance & Landscaping

- **Landscaping:**
 - N/A
- **Shoreline Weeds:**
 - Torpedo grass, primrose willow, sedges, and other shoreline weeds were treated in Lakes 1A, 1B, 1C, 2A, 3A, 3B, 3C, 6C, 6D, 6E, 6K, 6H, 6M, 6N, 6O, 6P, 6R, and along the shoreline of Lake 5/6.
 - Gulf spikerush was treated around docks and private residences on Lake 5/6.
- **Algae:**
 - N/A
- **Submerged Vegetation:**
 - Submerged vegetation was treated near the waterski course and within Verona Lago, Isola Bella, The Peninsula, Salerno, Murano, Portofino, Sorrento, Castelli, AnaCapri, and the Bellini dock and shoreline areas.
 - One additional service visit is scheduled before the end of the month.
 - Submerged vegetation mapping is scheduled for November 28.
- **Other Maintenance:**
 - N/A



Lake 6D – Algae that was treated



Lake 6D – Algae that was treated

2. Fishery

- As noted in the October report, submerged vegetation coverage was estimated at 130 acres in late October, based on the vendors observations and the latest mapping results. Due to continued expansion in both acreage and biomass, it is recommended that we stock an additional 200 Grass Carp, bringing the estimated population to 8.5–10 carp per vegetative acre. This approach, in combination with ongoing aquatic herbicide treatments, remains the most effective strategy for vegetation control.
- Given the rapid expansion over the past year, additional Grass Carp will likely be needed in 2026. The need—and the appropriate quantity—will be determined based on observations and vegetation mapping conducted in Q1 2026.
- Vegetation treatments have been progressing successfully over the past several weeks; however, time is needed to evaluate plant response. Once results become clearer, we can determine the most effective use of the remaining fisheries budget.

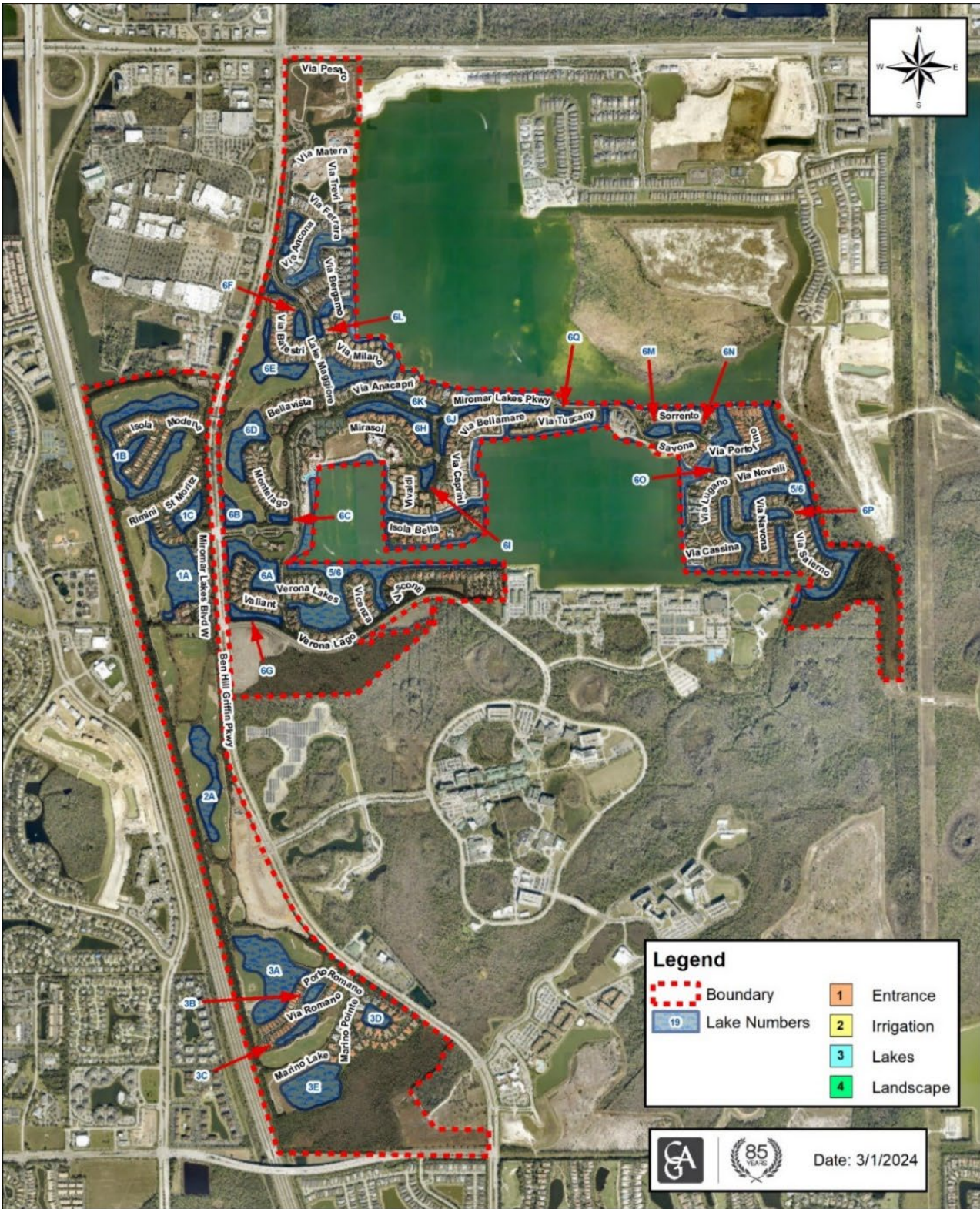


Fish Study & Findings

3. **Cane Toad Program**

- Overall activity in November has been relatively light. The month began with scattered clusters of toad activity, followed by a brief mid-month uptick and then a noticeable decline. A cold snap from November 10–14, with nighttime lows in the 50s, slowed movement and reduced hatch viability across the lakes and lagoons. Activity resumed afterward but remained modest. Adult trap captures stayed consistent across all monitored neighborhoods.
- If conditions follow the same pattern as last year, breeding activity is likely complete until mid to late January.
- Totals Through November 20 (Approx.):
 - Eggs removed: 50,000–65,000
 - Tadpoles removed: 7,000–11,000
 - Baby toads removed: 500–800
 - Adults collected from box traps: 60

4. Location Map



Miromar Lakes CDD - Engineer's Report Asset Map