

# **MIROMAR LAKES COMMUNITY DEVELOPMENT DISTRICT**

**Monthly Asset Manager's Report  
October 2023**

Prepared For:  
**James Ward  
District Manager**

Prepared By:



**Calvin, Giordano & Associates, Inc.**

**A SAFEbuilt® COMPANY**

CGA Project No. 13-5692  
November 1, 2023

**MIROMAR LAKES  
COMMUNITY DEVELOPMENT DISTRICT**

**TABLE OF CONTENTS**

I. PURPOSE ..... 3

II. CURRENT ASSET UPDATES .....3

III. LOCATION MAP.....5

IV. DISTRICT ASSET MANAGER PHOTOS.....6

# MIROMAR LAKES COMMUNITY DEVELOPMENT DISTRICT

## **I. PURPOSE**

The purpose of this report is to provide the District Manager with an update on recent inspection-related activities. We will continue to provide updated monthly inspection reports on the status of ongoing field activities.

## **II. CURRENT ASSET UPDATES**

The following items are currently outstanding:

### **1. Lake Maintenance**

- Aquatic vendor treated grasses, brush, and invasive weeds along the shoreline of lakes #6H, 6I, 6M, 6N, 6O, 6P, 6J, 6K, 6M, 6N, 6O, and the beach club marina rip rap. Selectively treated torpedo grass and vines in the littoral areas of lakes #3D, 3E, 6K, 6R, 6P and 6J. They treated the dead floating eel grass that was getting pushed into the coves of the peninsula marina. Treated submerged aquatic vegetation (Hydrilla) in lake #6J. Treated surface algae in lakes #6H, 6K, 6L and 6R. Treated planktonic algae in lake 3D, 6C, 6P, and 6R. Selectively treated grasses, vines, and invasive alligator weed in the littoral areas of lakes #6P and 6J. Also, hand pulled all the weeds around the shoreline of lake #3D.
- The cane toad vendor has quoted the CDD for 35 bait stations. The vendor has suggested that if he trapped only 2 toads/station per week, that's 70 adult toads per cycle. Considering each female can lay 20,000 eggs in each lake. The vendor is currently averaging 5 toads per test box "2" within Bellini. This is a suggestion to help migrate the tadpole population and keep them at a manageable control level. The CDD is suggesting a total of 35 boxes be installed around select lakes throughout the community. Boxes will be owned by the cane toad vendor on a rental basis by the CDD.

### **2. Capital**

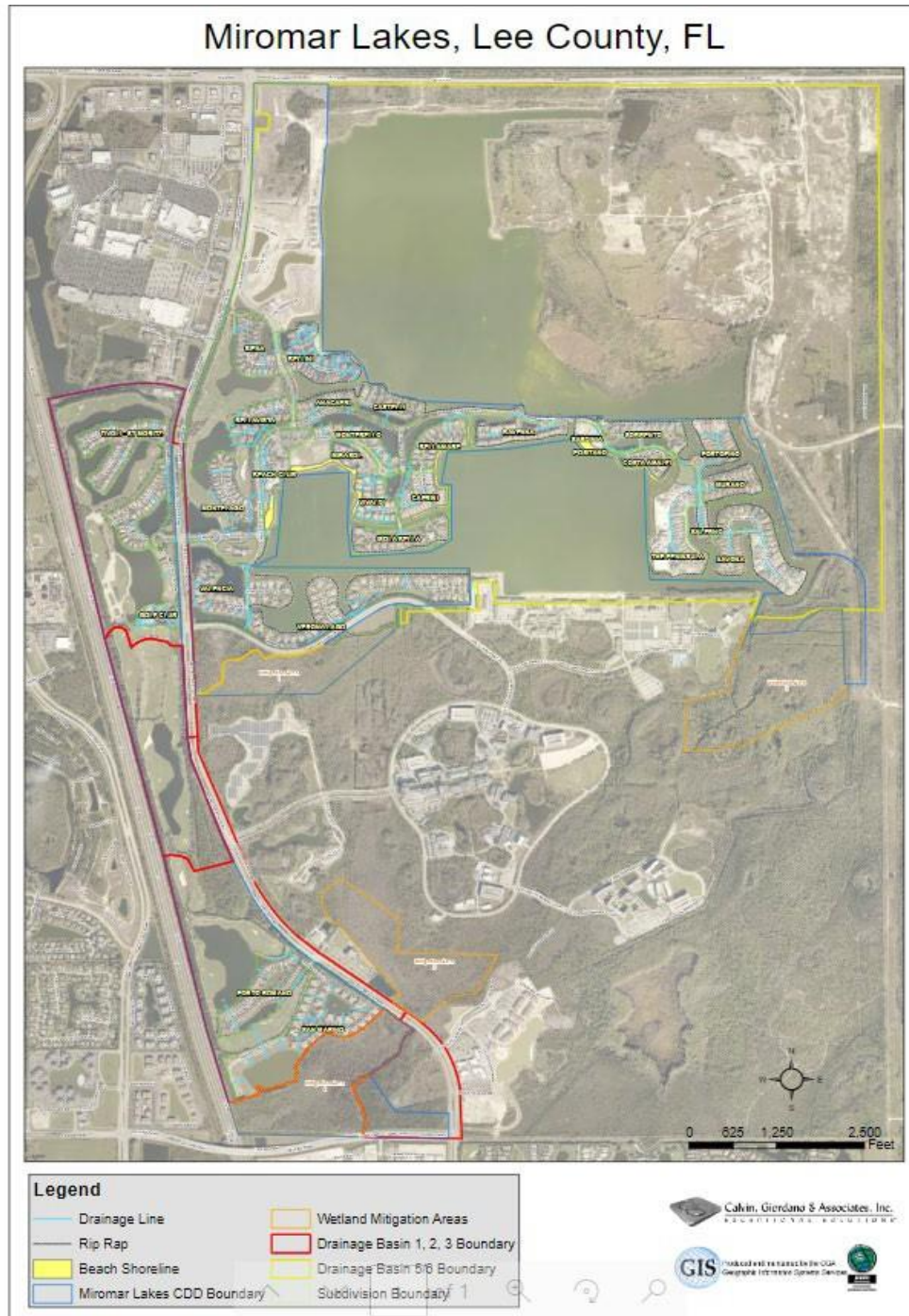
- The submersed vegetation coverage is in good range at the moment. The lake has approximately 15% coverage in vegetation. The next step in the process is to focus on limiting growth in undesired areas. The peninsula area is problematic at the moment. The aquatic vendor will continue treating dock/boat slips and shorelines where growth interferes with water uses/access. CDD staff is working with the vendor on vegetation guidelines to determine where we will allow submerged weeds to be present. Once the vegetation management guidelines are finalized. The aquatic vendor can incorporate this strategy into their regular visits and knock back the vegetation using herbicides to prevent damaging the habit that will be needed in the next few processes.

- The fishery vendor wrapped up their vegetation mapping project and calculated 9-10 acres of emergent vegetation along the shoreline throughout the lake. They will assess and confirm if any additional emergent vegetation can be established. Over the next few weeks, Then the fishery vendor will update the Fisheries Management Plan and propose next steps based on the progress made over the past 12 months.

### **3. Future Items**

- Follow up with lake bank restoration vendor on proposal for repairs to FY 24 capital.
- Periodic inspection of Ravenna riprap shoreline installation will take place.

### III. LOCATION MAP



**Calvin, Giordano & Associates, Inc.**  
 EXCEPTIONAL SOLUTIONS™  
 1800 Eller Drive, Suite 600 · Fort Lauderdale, FL 33316  
 (phone) 954.921.7781 · (fax) 954.266.6487  
 Certificate of Authorization #514

**IV. DISTRICT ASSET MANAGERS PHOTOS**



San Marino lake grasses along the shoreline before treatment.



Retention area before yearly cleanup.



Site with no lake.

