



**Report of Water Management System Study**

**FLOW WAY  
COMMUNITY DEVELOPMENT DISTRICT  
(FLOW WAY CDD)**

**2301 NE 34<sup>th</sup> Street  
Fort Lauderdale, Florida 33308**

**Forge Engineering Project Number 5911-001.01**

**June 2021**



June 4, 2021

**FLOW WAY CDD**

C/O JP Ward & Associates  
2301 NE 37<sup>th</sup> Street  
Fort Lauderdale, Florida 33308

**Subject:** Report of Engineering Consulting Services  
**WATER MANAGEMENT SYSTEM STUDY-LAKE & LITTORAL  
EVALUATION WITH ADDITIONAL SCOPE ITEMS**  
Forge Engineering Project Number 5911-001.01

Forge Engineering Inc. (FORGE) is pleased to present this report of our Water Management System Study completed for Flow Way CDD. Our services were completed in general accordance with our proposal 5911-001.01PR dated January 8, 2021 and authorized by agreement dated December 10, 2020 and fully executed January 15, 2021. FORGE has conducted our services in a manner consistent with the terms of the agreement and that degree of care and skill ordinarily exercised by members of the same profession currently practicing under similar circumstances.

The purpose of our services was to document the existing condition of the water management system and other common elements, including the District's main line/pump station irrigation system, certain landscape improvements that is along Immokalee Road from the eastern District boundary to the Flow Way outfall. Exhibit 1 shows the locations of the facilities owned by the District. This report provides estimates of useful life, estimates of the replacement cost, and an analysis on those conditions found as a result our investigation that are not in general compliance with good construction practices.

This report speaks only as to the condition of the development on the dates of our site visits. We appreciate this opportunity to be of service on this project and look forward to working with you on future opportunities.

Sincerely,  
**Forge Engineering, Inc.**

*David A. Bodzenski*

David A. Bodzenski  
Senior Project Manager

Thomas E. Conrecode, P.E.  
Principal Engineer  
Florida Registration No. 46571

## Table of Contents

1.0	EXECUTIVE SUMMARY .....	3
2.0	SCOPE OF SERVICES .....	4
3.0	OBSERVATIONS OF COMPONENTS .....	4
	Plumbing .....	5
	Water Management System .....	5
	Irrigation and Grounds .....	6
4.0	LIMITATIONS OF REPORT .....	7
5.0	CLOSING .....	7

## APPENDICES

APPENDIX A: Site Vicinity Aerial

APPENDIX B: Site Aerial

APPENDIX C: Site Photographs

APPENDIX D: Stormwater Management System Study: Summary

APPENDIX E: MRI Findings

APPENDIX F: Mettauer Report

Exhibit 1: District Facility Locations

Exhibit 2: District Lake & Stormwater Locations



## 1.0 EXECUTIVE SUMMARY

Forge Engineering, Inc. (FORGE) has conducted a study of the subject property’s facilities including the water management system, the main line irrigation/pump station and the exterior landscaping improvements that is along Immokalee Road from the eastern edge of the CDD boundary to the Flow Way outfall. Our services include providing a written report that identifies the status and maintenance for common elements of the property, the estimated useful life of each element, and the estimated replacement cost for the District’s facilities. The following table summarizes the study results determined by FORGE:

COMPONENT	CURRENT CONDITION	REQUIRED MAINTENANCE/ REPAIR COSTS
Common Irrigation	Good to Fair	
*Water Management System	Fair to Poor	\$794,000
Grounds	Fair to Poor	
<b>*REQUIRED MAINTENANCE/REPAIR COSTS TOTAL</b>	<b>\$794,000</b>	

“Poor” = an item is failing and in need of immediate repairs (0 months – 12 months).

“Fair to Poor” = an item requires major repairs or replacement in the near future (less than 12 months).

“Fair” = an item requires repair in the near future (12 months – 36 months).

“Good to Fair” = an item requires minor repairs or routine maintenance (less than 36 months).

“Good” = an item has been maintained and only routine maintenance is required (3 years or more).

The table does not include items that were considered normal routine maintenance items.

\* Indicates component that will require further investigation and additional maintenance/repair costs are TBD.

Historical aerial photographs of the subject association indicate that the infrastructure and golf course facilities began construction circa 2013, with the amenities center buildings beginning construction circa 2016.

Appendix A illustrates the subject site location with respect to the local vicinity, whereas, Appendix B shows an aerial photograph of the subject site. Representative photographs collected during the time of our site visit are presented in Appendix C. Appendix D summarizes our findings regarding current required maintenance costs, useful life, and element replacement costs of the common elements. Appendix E is a summary of the findings of the underwater evaluation of water management system elements. Appendix F is a copy of the August 2020 Mettauer Report. Exhibit 1 shows CDD Facilities and Exhibit 2 shows the layout of drainage facilities on the property.



## 2.0 SCOPE OF SERVICES

FORGE has conducted this inspection in general accordance with the scope and limitations of FORGE's proposal number 5911-001.01PR dated January 8, 2021.

In general, the District's facilities that were evaluated as part of this study:

- Water Management System (including):
  - Twenty-seven retention lakes, stormwater drains,
  - Two control structures at the Flow Way canal,
  - Catch basins in upland areas and roadways for stormwater collection,
  - Submerged pipe ends within the lakes,
  - Pipe connections between lakes.
- Main irrigation lines, pump stations,
- Entrance landscaping,
- Roadway areas experiencing flooding along drainage ways.

FORGE personnel completed physical site observations of the subject property on February 17<sup>th</sup> and 18<sup>th</sup>, 2021, as well as, March 3<sup>rd</sup>, 4<sup>th</sup> and 12<sup>th</sup>, 2021 that consisted of a visual examination of the property components. A follow up site visit was completed on April 21, 2021 in order to observe the retrofitted community irrigation control panel and the reportedly finished asphalt roadways and parking areas. Our services did not include uncovering building materials or performing invasive testing for the purposes of verifying in-place or constructed work. It is not possible for FORGE to identify discrepancies, which are likely to occur within concealed spaces. No materials testing or field/equipment testing was performed by this office unless specifically authorized and detailed herein. Exterior observations of the District's facilities were made from the ground level. At our request, the District retained, MRI Underwater, to assist in evaluating the conditions of water management system facilities not visible from ground elevation. This includes inspecting specified storm water structures and pipes to identify blockages and existing conditions.

## 3.0 OBSERVATIONS OF COMPONENTS

The component categories included in this study are summarized and described below. We have provided our opinion of the current condition for each line item identified in this report using the following terms:



### Opinion of Current Condition

**Good** – An item has been maintained and only routine maintenance is required,

**Good to Fair** – An item requires minor repairs or routine maintenance,

**Fair** – An item requires limited repairs or maintenance in the near future,

**Fair to Poor** – An item requires major repairs or replacement in the near future,

**Poor** – An item is failing and in need of immediate repairs or replacement.

### Plumbing

Applicable plumbing components for the subject property include sanitary sewer pipes and 7 sewer lift stations. Collier County Utilities owns and operates the water and sewer services to the subject development, however, due to errant odors from lift station 168.09 located adjacent to Esplanade Boulevard between Cavano Street and Bellano Court, Forge was asked to investigate the operation of this system.

In general, this item was observed to be in fair to poor overall condition at the time of our site visit.

The following items were noted during our inspection as related to the scope of this report:

- We noted a foul odor at lift station 168.09, even though there is an odor control device installed at this location.
  - Further investigation with the Collier County Wastewater Division indicated that the odor control apparatus is a two-stage treatment process which requires regular maintenance and upkeep of the treatment media on a roughly quarterly basis.
  - The subject unit is at the end of the wastewater stream within the development and is therefore experiencing periodic surging of flows from upstream.
  - The Collier County Wastewater Department should be contacted when odors are detected.

### Water Management System

Drainage for the development is comprised of sloped roofs that deposit water into the roof perimeter gutter and downspout systems that then convey runoff water into underground pipe systems. These are not CDD owned elements of the stormwater system. Storm water then travels into catch basins, drainage lakes, and/or into connected underground piping that is connected to the adjacent stormwater lakes owned and operated by the CDD.

A flow way on the West side of the property is comprised of a channel and two concrete water control structures (Broad Crested Weirs), that manage water retention and runoff levels of the



preserve wetlands and the inter-connected stormwater lakes.

In general, the storm water drainage systems at the subject site were observed to be in fair to poor overall condition at the time of our site visits. The following items were noted during our inspection:

- We observed erosion of the embankment at the following lakes: Numbers 2, 9, 10, 12AB, 13, 14, 15A, 15B, 16, 17, 18, 19, 20, 21, 23, 25, 26 and 27.
- We observed drop-off of the embankment at several locations of the following lakes: Numbers 12, 13, 14, 15A, 15B, 16, 17, 18, 19 and 23.
- We observed direct discharge of building downspout drains into the following lakes: Numbers 5B, 6, 7, 9, 13, 14, 15A, 15B, 16, 17, 18, 19, 20, 21, 22, 23, 25, 26 and 27.
- We observed areas of rip rap at various locations of embankment erosion at lake 12AB.
- We observed dead littoral plants at the following lakes: Numbers 5A, 6, 9, 10, 20, 25, 26 and 27. (Refer to Mettauer Environmental report located within Appendix F, Inspection Reference: 08202020 for detailed information.)
- Lake number 11 was recently expanded and incomplete at the time of our inspection, however recently revised and approved plans indicate much of the lake expansion will now be used as a shallow littoral planting zone rather than stormwater lake. It is speculated that the developer chose not to blast the rock layer to fully excavate this area for this lake expansion.
- The lakes and flow way are inter-connected via underground piping. These components are underwater and were not visible during our site visits. At our request, the District retained, MRI Underwater, to assist in evaluating the conditions of water management system facilities. This includes inspecting specified storm water structures to identify blockages and existing conditions. Their findings are summarized in Appendix E.
- We observed an area of dead littoral plants along the flow way.
- While both broad crested weir structures were in good condition, we observed soil erosion at both ends of the south, broad crested weir of the Flow Way and recommend repair of these areas in advance of the next wet season.

### Irrigation and Grounds

Irrigation water for the Community is provided by two pump houses and is distributed throughout the subject property. One pump house, owned and operated by the CDD, provides irrigation



water to the residential units and the other providing irrigation water to the golf course is not a CDD asset. Water is supplied by two wells from a shallow aquifer discharging into lakes and the pump houses withdraw irrigation water from the lakes. This is permitted through the South Florida Water Management District with specific limitations for withdrawals. Forge did not identify any metering devices for these withdrawals.

In general, the pump houses are supported by the following pieces of equipment:

- District irrigation pump house: 4-75hp, 1-25hp, and 1-1.5hp motors, 2 filters, a controller and a bromine treatment system.
- Golf course irrigation pump house: 3-75hp and 2-.75hp motors, and 2 controllers.

In general, the irrigation and grounds were observed to be in fair to poor overall condition. The District pump house was recently upgraded with telemetry and automated controls to minimize downtime caused by errant operational parameters. The following items were noted during our inspection as related to the scope of this report:

- We observed two unknown tanks at the exterior of the golf course pump house.

#### **4.0 LIMITATIONS OF REPORT**

Due to the limited scope of our services, it may be possible that some repairs have not been identified herein. Costs provided herein are opinions only and are based on our experience with similar projects. Unless stated otherwise, no contractors have provided pricing. Depending upon contractors' fees and specific products, actual costs will vary from our estimates.

Unless noted herein, the site was not assessed for compliance with State and federal environmental laws or specific building codes. No laboratory analyses were performed on any building materials, soil, surface water, or any other substance as part of this assessment other than those that may be specified in the report. FORGE is not responsible for any independent conclusions, opinions, or recommendations made by others based on the information presented in this report.

#### **5.0 CLOSING**

Opinions of costs have been provided for each recommendation unless noted otherwise and are based on our experience with projects of a similar type, known construction industry averages, or historical cost data. Opinions of cost information are inclusive of labor, material, appropriate





overhead, general conditions, and profit. It is exclusive of any contingencies and local taxes that may be assessed on this project, and it is assumed that outside contractors will perform remedial work.

We have not attempted to identify items of routine repair and maintenance such as sprinkler head replacement and lighting repairs. We trust the information contained herein is suitable for your needs and appreciate the opportunity to have been of service to you. Please contact us if you have any questions concerning this report.



# **APPENDIX A**



Image: Google Earth Pro



### Appendix A: Site Vicinity Map

#### FLOW WAY CDD

Esplanade Golf & Country Club  
Naples, Collier County, Florida

FORGE Project Number 5911-001.01



# **APPENDIX B**

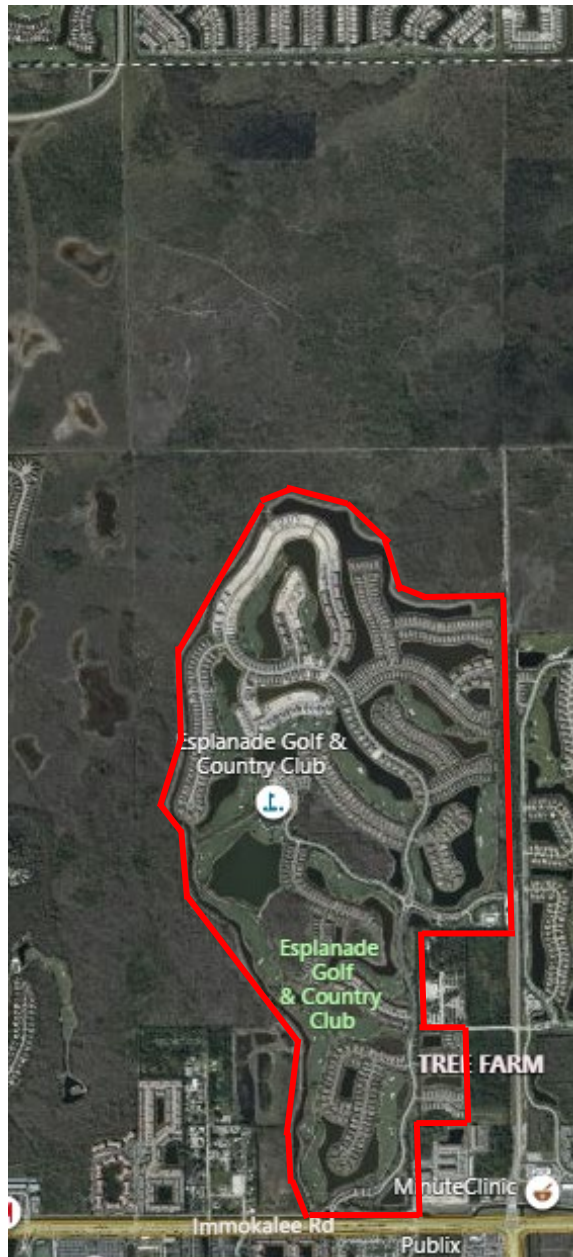
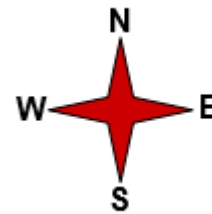


Image: Bing Maps Website



### Appendix B: Site Aerial

#### FLOW WAY CDD

Esplanade Golf & Country Club  
Naples, Collier County, Florida

FORGE Project Number 5911-001.01



# APPENDIX C

# APPENDIX C: SITE PHOTOGRAPHS

Flow Way CDD

FORGE Project No. 5911-001.01



View of lift station 168.09.



View of odor control system at 168.09.

# APPENDIX C: SITE PHOTOGRAPHS

Flow Way CDD

FORGE Project No. 5911-001.01



View of groove cut into concrete catch basin – Amenity Center Parking Lot.



View of gutter downspout from a building - Lake 17/Benvenuto Court.



# APPENDIX C: SITE PHOTOGRAPHS

Flow Way CDD

FORGE Project No. 5911-001.01



Typical view of Lake 1, note sign condition



View of direct discharge lines - Lake 27.

# APPENDIX C: SITE PHOTOGRAPHS

Flow Way CDD

FORGE Project No. 5911-001.01



View of herbicide spray, not permitted in littoral areas - Lake 5A.



View of damaged Littoral sign - Lake 5B.

# APPENDIX C: SITE PHOTOGRAPHS

Flow Way CDD

FORGE Project No. 5911-001.01



Typical view of littoral - Lake 9.



Typical view of littoral - Lake 26.

# APPENDIX C: SITE PHOTOGRAPHS

Flow Way CDD

FORGE Project No. 5911-001.01



View of erosion at lake embankment - Lake 7.



Typical view of Lake 6.

# APPENDIX C: SITE PHOTOGRAPHS



View of rip rap at areas of erosion - Lake 12.



View of rip rap at areas of erosion - Lake 12.

# APPENDIX C: SITE PHOTOGRAPHS

Flow Way CDD

FORGE Project No. 5911-001.01



View of erosion at lake embankment - Lake 23.



View of erosion at lake embankment - Lake 15A.

# APPENDIX C: SITE PHOTOGRAPHS

Flow Way CDD

FORGE Project No. 5911-001.01



View of erosion at discharge line - Lake 14.



Typical view of Lake 14.

# APPENDIX C: SITE PHOTOGRAPHS

Flow Way CDD

FORGE Project No. 5911-001.01



Typical view of Lake 13.



View of limited littoral plants - Lake 16.



# APPENDIX C: SITE PHOTOGRAPHS

Flow Way CDD

FORGE Project No. 5911-001.01



View of erosion at lake embankment and direct discharge lines - Lake 16.



View of erosion at lake embankment and direct discharge lines - Lake 16

# APPENDIX C: SITE PHOTOGRAPHS

Flow Way CDD

FORGE Project No. 5911-001.01



View of erosion at lake embankment - Lake 18.

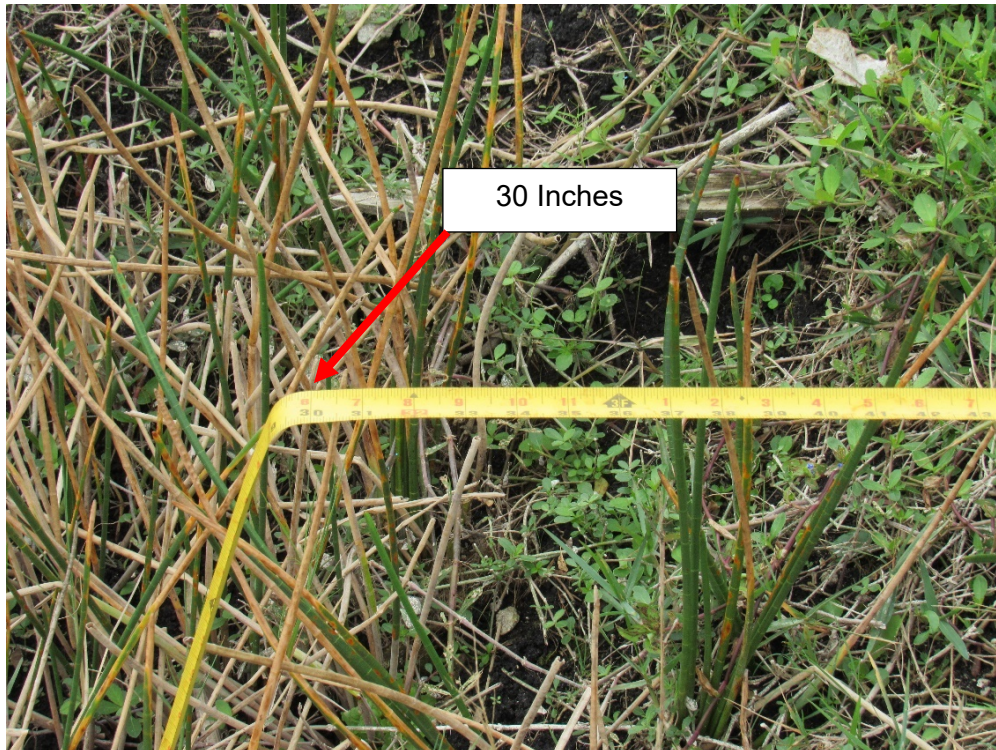


Typical view of limited littoral plants - Lake 18.

# APPENDIX C: SITE PHOTOGRAPHS



View of erosion at lake embankment - Lake 18.



View of the depth of erosion at lake embankment - Lake 18.

# APPENDIX C: SITE PHOTOGRAPHS

Flow Way CDD

FORGE Project No. 5911-001.01



Typical view of limited littoral plants and direct discharge lines - Lake 18.



Typical view of limited littoral plants - Lake 25.

# APPENDIX C: SITE PHOTOGRAPHS

Flow Way CDD

FORGE Project No. 5911-001.01



Typical view of limited littoral plants - Lake 25.



Typical view of limited littoral plants and direct discharge lines - Lake 20.

# APPENDIX C: SITE PHOTOGRAPHS

Flow Way CDD

FORGE Project No. 5911-001.01

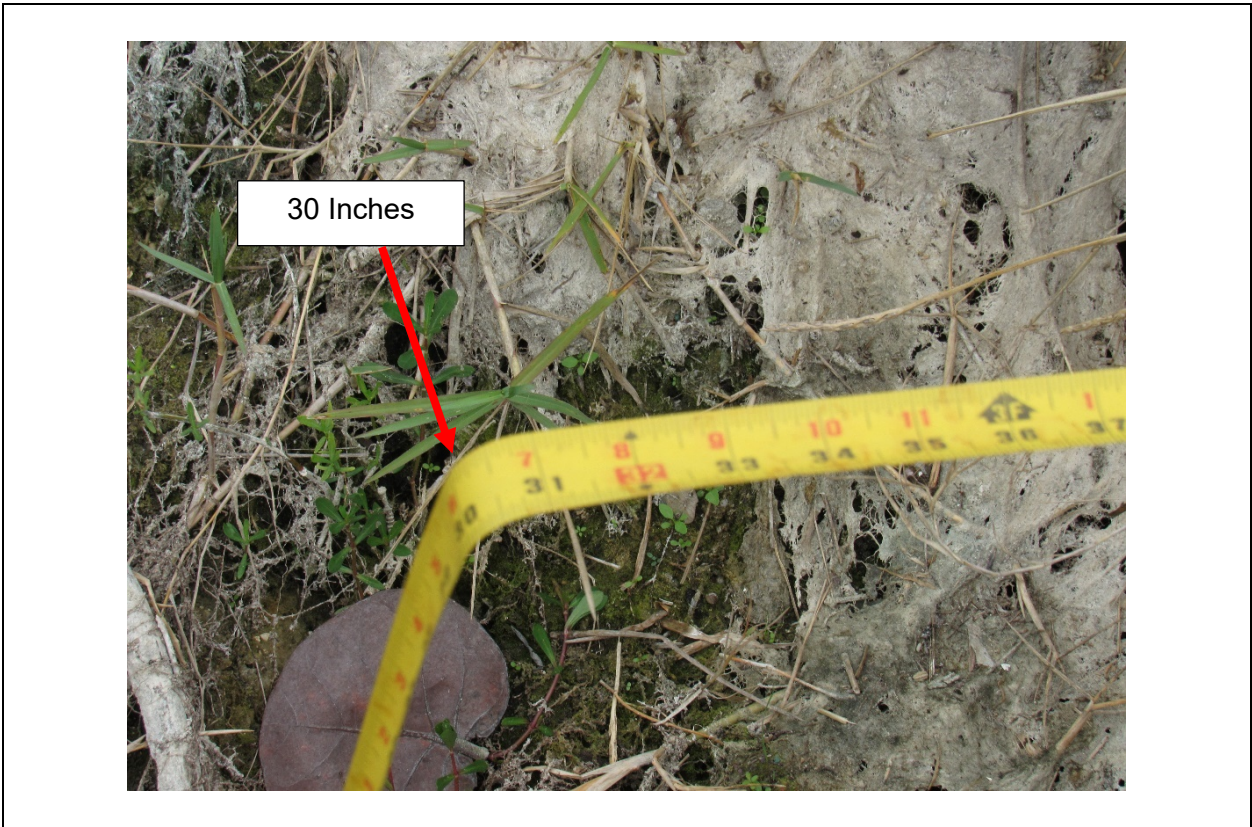


View of limited littoral plants and erosion at lake embankment - Lake 20.



View of the depth of erosion at lake embankment - Lake 20.

# APPENDIX C: SITE PHOTOGRAPHS



View of the depth of erosion at lake embankment - Lake 20.



View of limited littoral plants - Lake 22.

# APPENDIX C: SITE PHOTOGRAPHS

Flow Way CDD

FORGE Project No. 5911-001.01



View of North Broad Crested Weir.



Typical view of Flow Way.



# APPENDIX C: SITE PHOTOGRAPHS

Flow Way CDD

FORGE Project No. 5911-001.01



View of South Broad Crested Weir.



View of erosion - South Broad Crested Weir.

# APPENDIX C: SITE PHOTOGRAPHS



View of erosion - South Broad Crested Weir.



View of lake under construction - Lake 11.

# APPENDIX C: SITE PHOTOGRAPHS

Flow Way CDD

FORGE Project No. 5911-001.01



View of Entry Bridge



View of Flow Way at intersection with Immokalee Road Canal.

# APPENDIX C: SITE PHOTOGRAPHS

Flow Way CDD

FORGE Project No. 5911-001.01



Exterior view of Community Irrigation Pump House.



Interior view of Community Irrigation Pump House.

# APPENDIX C: SITE PHOTOGRAPHS



View of unknown tanks - Golf Course Irrigation Pump House.



View of exterior gas pump - Golf Course Irrigation Pump House.

# APPENDIX D

**APPENDIX D: WATER MANAGEMENT SYSTEM ELEMENT SUMMARY**

**FLOW WAY CDD - ESPLANADE GOLF & COUNTRY CLUB**

Condominium Buildings: 0		Amenity Buildings: 0		Constructed: 2013 - 2021	
<b>ELEMENT</b>	<b>ELEMENT CONDITION</b>	<b>Required Maintenance Costs</b>	<b>Estimated Useful Life (years)</b>	<b>Approximate Remaining Useful Life (years)</b>	<b>Estimated Replacement Cost</b>
<b>PLUMBING</b>	<b>Good to Fair</b>	<b>N/A</b>	<b>40+</b>	<b>32 - 39+</b>	<b>N/A</b>
N/A		N/A	Water/Sewer Lines		
<b>DRAINAGE SYSTEMS AND LAKES</b>	<b>Fair to Poor</b>	<b>\$794,000</b>	<b>30 - 40+</b>	<b>22 - 32+</b>	<b>N/A</b>
Address erosion at the lake embankments.		\$528,000			
Address the rip rap at the erosion of the embankment at Lake 12AB.		\$12,000			
Address dead littoral plants at lakes number 5A, 6, 9, 10, 20, 25, 26 and 27.		\$160,000			
Address soil erosion at both ends of the south fixed spillway of the Flow Way.		\$8,000			
Hired dive company, MRI, specializing in lake investigations to inspect the inter-connected pipes between lakes and flow way.		\$6,000			
Clean/clear drainage lines per MRI's investigation.		\$80,000			
<b>IRRIGATION AND GROUNDS</b>	<b>Fair to Poor</b>	<b>N/A</b>	<b>30+ Irrigation Lines 5 - 15 Sprinklers 30 Control Panel</b>	<b>22+</b>	<b>N/A</b>
N/A		N/A			
<b>*ELEMENT TOTAL</b>		<b>\$794,000</b>			
Required Maintenance Costs include permit fees, construction overhead and taxes but exclude special equipment needed to access an element's location.					
Minimum = Approximate minimum fee to complete a required maintenance item.					
* Indicates a component that will require further investigation and additional maintenance/repair costs that are TBD.					
Estimated Useful Life assumes that all maintenance is done correctly and in a timely manner.					
Estimated Required Maintenance Costs for each category are the sum of the estimated repair costs for each item identified within the Turnover portion of the report.					
Estimated Replacement Costs are current and not adjusted for future dollars.					
"Poor"= an item is failing and in need of immediate repairs, "Fair"= an item requires repair in the near future, "Good"= an item has been maintained and only requires routine maintenance.					

# **APPENDIX E**

**(MRI Findings)**



STRUCTURE #	LOCATION	TYPE/LAKE	CONDITION 2021	RECOMMEND CLEANING
1001	Esplanade Blvd	Curb	5% Sand and Debris	NO
1002	Esplanade Blvd	Curb	5% Sand and Debris	NO
<b>1003</b>	<b>Lake # 2</b>	<b>Lake End</b>	<b>95% Sand and Debris</b>	<b>YES</b>
1004	Esplanade Blvd	Curb	10% Sand and Debris	NO
1005	Esplanade Blvd	Curb	5% Sand and Debris	NO
<b>1007</b>	<b>Lake #2</b>	<b>Lake End</b>	<b>80% Sand and Debris</b>	<b>YES</b>
<b>1017</b>	<b>Lake #1</b>	<b>Lake End</b>	<b>35% Sand and Debris</b>	<b>YES</b>
1016	Esplanade Blvd	Curb	10% Sand and Debris	NO
1015	Esplanade Blvd	Curb	10% Sand and Debris	NO
<b>1008</b>	<b>Lake #2</b>	<b>Lake End</b>	<b>25% Sand and Debris</b>	<b>YES</b>
1015A	Esplanade Blvd	Curb	5% Sand and Debris	NO
1015B	Esplanade Blvd	Curb	5% Sand and Debris	NO
1018A	Esplanade Blvd	Box	5% Sand and Debris	NO
1018	Esplanade Blvd	Curb	5% Sand and Debris	NO
1019	Esplanade Blvd	Curb	5% sand and Debris	NO
<b>1020</b>	<b>Lake #4</b>	<b>Lake End</b>	<b>40% Sand and Debris</b>	<b>YES</b>
1021	Lake #4	Lake End	10% Sand and Debris	NO
<b>1022</b>	<b>Lake #2</b>	<b>Lake End</b>	<b>50% Sand and Debris</b>	<b>YES</b>
1023A	Esplanade Blvd	Manhole	Clean	NO
1023	Esplanade Blvd	Curb	Clean	NO
1024	Esplanade Blvd	Curb	Clean	NO
1025	Lake #4	Lake End	Clean	NO
<b>1118</b>	<b>Lake #2</b>	<b>Lake End</b>	<b>50% Sand and Debris</b>	<b>YES</b>

***WE SEE THINGS YOU CAN'T***

STRUCTURE #	LOCATION	TYPE/LAKE	CONDITION 2021	RECOMMEND CLEANING
<b>CS-01</b>	<b>Lake #2</b>	<b>Control Structure 1</b>	<b>25% Sand and Debris</b>	<b>YES</b>
1119	Flow Way	Lake End	Clean	NO
<b>2013</b>	<b>Lake #2</b>	<b>Lake End</b>	<b>95% Sand and Debris</b>	<b>YES</b>
2012	Cavano St.	Curb	5% Sand and Debris	NO
2011	Cavano St.	Curb	5% Sand and Debris	NO
2010	Lake #3	Lake End	10% Sand and Debris	NO
1014	Lake #1	Lake End	Did not Locate	
CS-1013			Did not Locate	
1012			Did not Locate	
1010			Did not Locate	
1009			Did not Locate	
<b>1026</b>	<b>Lake #4</b>	<b>Lake End</b>	<b>90% Sand and Debris</b>	<b>YES</b>
<b>1027</b>	<b>Amour Ct</b>	<b>Manhole</b>	<b>30% Roots, Sand and Debris</b>	<b>YES</b>
1028	Amour Ct	Curb	10% Sand and Debris	NO
1029	Amour Ct	Curb	20% Sand and Debris	NO
<b>1030</b>	<b>Lake #5</b>	<b>Lake End</b>	<b>25% Sand and Debris</b>	<b>YES</b>
<b>1031A</b>	<b>Box</b>	<b>Box</b>	<b>Buried</b>	<b>YES</b>
1031	Esplanade Blvd	Curb	Clean	NO
1032	Esplanade Blvd	Curb	Clean	NO
<b>1033</b>	<b>Lake #5A</b>	<b>Lake End</b>	<b>50% Sand and Debris</b>	<b>YES</b>
1034	Box	Grate Box	10% Sand and Debris	NO
<b>1035A</b>	<b>Lake #5A</b>	<b>Lake End</b>	<b>30% Grass, Sand and Debris</b>	<b>YES</b>
1034A	Bellano Ct	Curb	Clean	NO
1034B	Bellano Ct	Curb	Clean	NO
1045	Esplanade Blvd	Curb	Clean	NO
<b>1044</b>	<b>Esplanade Blvd</b>	<b>Curb</b>	<b>25% Sand and Debris</b>	<b>YES</b>

***WE SEE THINGS YOU CAN'T***

STRUCTURE #	LOCATION	TYPE/LAKE	CONDITION 2021	RECOMMEND CLEANING
<b>1044A</b>	<b>Lake #9</b>	<b>Lake End</b>	<b>75% Sand and Debris</b>	<b>YES</b>
1043	Box	Box	10% Sand and Debris	NO
1048	Esplanade Blvd	Curb	10% Sand and Debris	NO
1049	Esplanade Blvd	Curb	10% Sand and Debris	No
<b>1050</b>	<b>Lake #9</b>	<b>Lake End</b>	<b>50% Vegetation, Sand and Debris</b>	<b>YES</b>
<b>1051</b>	<b>Lake #14</b>	<b>Lake End</b>	<b>40% Sand and Debris</b>	<b>YES</b>
<b>1052</b>	<b>Esplanade Blvd</b>	<b>Curb</b>	<b>25% Sand and Debris</b>	<b>YES</b>
1053	Esplanade Blvd	Curb	10% Sand and Debris	NO
<b>1054</b>	<b>Lake #9</b>	<b>Lake End</b>	<b>80% Sand and Debris</b>	<b>YES</b>
<b>1057</b>	<b>Lake #11</b>	<b>Lake End</b>	<b>95% Rocks, Sand and Debris</b>	<b>YES</b>
<b>1058</b>	<b>Torre Vista</b>	<b>Curb</b>	<b>80% Sand and Debris</b>	<b>YES</b>
<b>1059</b>	<b>Torre Vista</b>	<b>Curb</b>	<b>75% Sand and Debris</b>	<b>YES</b>
<b>1060</b>	<b>Lake #12</b>	<b>Lake End</b>	<b>80% Sand and Debris</b>	<b>YES</b>
1051	Torre Vista	Curb	10% Sand and Debris	NO
1051A	Torre Vista	Curb	10% Sand and Debris	NO
<b>1052</b>	<b>Lake #12</b>	<b>Lake End</b>	<b>75% Sand and Debris</b>	<b>YES</b>
<b>1052C</b>	<b>Torre Vista</b>	<b>Curb</b>	<b>25% Sand and Debris</b>	<b>YES</b>
<b>1052B</b>	<b>Torre Vista</b>	<b>Curb</b>	<b>30% Sand and Debris</b>	<b>YES</b>
<b>1052A</b>	<b>Lake #12</b>	<b>Lake End</b>	<b>100% Fabric, Vegetation, Sand and Debris</b>	<b>YES</b>
<b>2095A</b>	<b>Lake #10</b>	<b>Lake End</b>	<b>85% Sand and Debris</b>	<b>YES</b>
<b>2098</b>	<b>Torre Vista</b>	<b>Curb</b>	<b>30% Sand and Debris</b>	<b>YES</b>
<b>2098A</b>	<b>Lake #10</b>	<b>Lake End</b>	<b>45% Sand and Debris</b>	<b>YES</b>
<b>2098B</b>	<b>Lake #12</b>	<b>Lake End</b>	<b>90% Sand and Debris</b>	<b>YES</b>
<b>2098C</b>	<b>Esplanade Blvd</b>	<b>Curb</b>	<b>50% Sand and Debris</b>	<b>YES</b>
<b>2098D</b>	<b>Esplanade Blvd</b>	<b>Curb</b>	<b>45% Sand and Debris</b>	<b>YES</b>
<b>2098E</b>	<b>Lake #10</b>	<b>Lake End</b>	<b>80% Sand and Debris</b>	<b>YES</b>
<b>1063</b>	<b>Torre Vista</b>	<b>Curb</b>	<b>30% Sand and Debris</b>	<b>YES</b>

***WE SEE THINGS YOU CAN'T***

STRUCTURE #	LOCATION	TYPE/LAKE	CONDITION 2021	RECOMMEND CLEANING
1064	Lake #9	Lake End	20% Sand and Debris	NO
1121	Flow Way	Lake End	20% Sand and Debris	NO
<b>CS02</b>	<b>Golf Course</b>	<b>Box</b>	<b>90% Sand and Debris</b>	<b>YES</b>
<b>1120</b>	<b>Lake #6</b>	<b>Lake End</b>	<b>Buried-Not able to located</b>	<b>YES</b>
<b>1040</b>	<b>Lake #6</b>	<b>Lake End</b>	<b>95% Sand and Debris</b>	<b>YES</b>
<b>1041</b>	<b>Vaccaro Ct</b>	<b>Manhole</b>	<b>25% Sand and Debris</b>	<b>YES</b>
<b>1042</b>	<b>Lake #9</b>	<b>Lake End</b>	<b>95% Sand and Debris</b>	<b>YES</b>
<b>1937</b>	<b>Lake #5B</b>	<b>Lake End</b>	<b>25% Sand and Debris</b>	<b>YES</b>
<b>1036</b>	<b>Lake #5A</b>	<b>Lake End</b>	<b>40% Sand and Debris</b>	<b>YES</b>
<b>147</b>	<b>Lake #5A</b>	<b>Lake End</b>	<b>50% Sand and Debris</b>	<b>YES</b>
146	Box	Box	Clean	NO
145	Cavano St.	Curb	Clean	NO
144	Cavano St.	Curb	Clean	NO
143	Cavano St.	Box	Clean	NO
142	Cavano St.	Curb	Clean	NO
141	Cavano St.	Curb	Clean	NO
140	Lake #3	Lake End	10% Sand & Debris	No
CS1072		Control Structure	10% Sand and Debris	NO
<b>1071</b>	<b>Lake #7</b>	<b>Lake End</b>	<b>75% Sand and Debris</b>	<b>YES</b>
<b>1067</b>	<b>Lake #8</b>	<b>Lake End</b>	<b>80% Sand &amp; Debris</b>	<b>Yes</b>
CS1055	Preseve D	Control Structure	Clean	NO
<b>1056</b>	<b>Lake #9</b>	<b>Lake End</b>	<b>100% Sand and Debris</b>	<b>YES</b>
<b>1066</b>	<b>Lake #8</b>	<b>Lake End</b>	<b>95% Sand and Debris</b>	<b>YES</b>
<b>1065</b>	<b>Lake #9</b>	<b>Lake End</b>	<b>Buried</b>	<b>YES</b>
3000	Pocida Ct	Curb	15% Sand and Debris	NO

***WE SEE THINGS YOU CAN'T***

STRUCTURE #	LOCATION	TYPE/LAKE	CONDITION 2021	RECOMMEND CLEANING
3001	Lake #21	Lake End	10% Sand and Debris	NO
<b>3002</b>	<b>Lake #21</b>	<b>Lake End</b>	<b>30% Sand and Debris</b>	<b>YES</b>
3003	Pocida Ct	Curb	Clean	NO
3004	Pocida Ct	Curb	5% Sand and Debris	NO
3005	Pocida Ct	Curb	10% Sand and Debris	NO
<b>3006</b>	<b>Pocida Ct</b>	<b>Curb</b>	<b>25% Sand and Debris</b>	<b>YES</b>
<b>3007</b>	<b>Lake #21</b>	<b>Lake End</b>	<b>50% Sand and Debris</b>	<b>YES</b>
1089	Lake #21	Lake End	15% Sand and Debris	NO
3010	Montelanico Loop	Curb	10% Sand and Debris	NO
3011	Lake #22	Lake End	Clean	NO
3012	Montelanico Loop	Curb	10% Sand and Debris	NO
3013	Montelanico Loop	Curb	5% sand and Debris	NO
<b>3014</b>	<b>Lake #25</b>	<b>Lake End</b>	<b>25% Sand and Debris</b>	<b>YES</b>
<b>1080</b>	<b>Lake #22-21</b>	<b>Lake End</b>	<b>Buried</b>	<b>YES</b>
1633	Montelanico Loop	Box	Clean	NO
1633A	Montelanico Loop	Box	Clean	NO
1633B	Montelanico Loop	Curb	10% Sand and Debris	NO
1633C	Montelanico Loop	Curb	5% Sand and Debris	NO
1633D	Montelanico Loop	Box	5% Sand and Debris	NO
<b>1088D</b>	<b>Montelanico Loop</b>	<b>Box</b>	<b>30% Sand and Debris</b>	<b>YES</b>
1088C	Montelanico Loop	Curb	15% Sand and Debris	NO
1088B	Montelanico Loop	Curb	20% Sand and Debris	NO
1088A	Montelanico Loop	Box	10% Sand and Debris	NO
1088	Montelanico Loop	Box	5% Sand and Debris	NO
<b>1084</b>	<b>Lake #20-21</b>	<b>Lake End</b>	<b>Buried</b>	<b>YES</b>
<b>1086</b>	<b>Lake #20-21</b>	<b>Lake End</b>	<b>90% Sand and Debris</b>	<b>YES</b>

***WE SEE THINGS YOU CAN'T***

STRUCTURE #	LOCATION	TYPE/LAKE	CONDITION 2021	RECOMMEND CLEANING
1086A	Montelanico Loop	Curb	10% Sand and Debris	NO
1086B	Montelanico Loop	Curb	10% Sand and Debris	NO
<b>1086C</b>	<b>Montelanico Loop</b>	<b>Box</b>	<b>30% Sand and Debris</b>	<b>YES</b>
<b>1089</b>	<b>Lake #20-21</b>	<b>Lake End</b>	<b>60% Rocks, Vegetation Sand and Debris</b>	<b>YES</b>
1089A	Montelanico Loop	Curb	15% Rocks, Sand and Debris	NO
1089B	Montelanico Loop	Curb	5% Rocks, Sand and Debris	NO
1098	Lake #20-21	Lake End	20% Sand and Debris	NO
<b>1098A</b>	<b>Montelanico Loop</b>	<b>Curb</b>	<b>45% Sand and Debris</b>	<b>YES</b>
<b>1098B</b>	<b>Montelanico Loop</b>	<b>Curb</b>	<b>40% Sand and Debris</b>	<b>YES</b>
1098C	Lake #18-19	Lake End	10% Sand and Debris	NO
1092B	Montelanico Loop	Curb	20% Sand and Debris	NO
1092A	Montelanico Loop	Curb	20% Sand and Debris	NO
<b>1092</b>	<b>Lake #20-21</b>	<b>Lake End</b>	<b>30% Sand and Debris</b>	<b>YES</b>
1093B	Montelanico Loop	Curb	5% Sand and Debris	NO
1093A	Montelanico Loop	Curb	5% Sand and Debris	NO
1093 C	Montelanico Loop	Curb	5% Sand & Debris	NO
1093D	Montelanico Loop	Curb	5% Sand & Debris	No
1093 E	Lake# 18-19	Lake End		
1093	Lake #20-21	Lake End	5% Sand and Debris	NO
<b>3015</b>	<b>Lake #22</b>	<b>Lake End</b>	<b>65% Sand and Debris</b>	<b>YES</b>
3016	Montelanico Loop	Curb	15% Sand and Debris	NO
3017	Montelanico Loop	Curb	15% Sand and Debris	NO
<b>3018</b>	<b>Lake #18-19</b>	<b>Lake End</b>	<b>30% Sand and Debris</b>	<b>YES</b>
3019	Montelanico Loop	Curb	20% Leaves, Sand and Debris	NO
3020	Montelanico Loop	Curb	15% Sand and Debris	NO
3021	Lake #22	Lake End	Clean	NO
<b>1</b>	<b>Lake #22</b>	<b>Lake End</b>	<b>90% Sand and Debris</b>	<b>YES</b>

***WE SEE THINGS YOU CAN'T***

STRUCTURE #	LOCATION	TYPE/LAKE	CONDITION 2021	RECOMMEND CLEANING
2	Carpetto Drive	Curb	10% Sand and Debris	NO
3	Carpetto Drive	Curb	20% Sand and Debris	NO
<b>4</b>	<b>Lake #25</b>	<b>Lake End</b>	<b>40% Sand and Debris</b>	<b>YES</b>
5	Carpetto Drive	Curb	Clean	NO
6	Carpetto Drive	Curb	10% Sand and Debris	NO
7	Carpetto Drive	Manhole	15% Sand and Debris	NO
<b>8</b>	<b>Lake #22</b>	<b>Lake End</b>	<b>60% Sand and Debris</b>	<b>YES</b>
<b>9</b>	<b>Talipano Ter</b>	<b>Box</b>	<b>80% Sand and Debris</b>	<b>YES</b>
10	Talipano Ter	Box	10% Sand & Debris	No
<b>11</b>	<b>Lake #23</b>	<b>Lake End</b>	<b>95% Vegetation, Sand and Debris</b>	<b>YES</b>
<b>12</b>	<b>Talipano Ter</b>	<b>Curb</b>	<b>30% Sand and Debris</b>	<b>YES</b>
<b>13</b>	<b>Talipano Ter</b>	<b>Curb</b>	<b>40% Sand and Debris</b>	<b>YES</b>
14	Lake #22	Lake End	Clean	NO
15	Talipano Ter	Curb	Clean	NO
16	Talipano Ter	Curb	Clean	NO
<b>17</b>	<b>Lake #22</b>	<b>Lake End</b>	<b>90% Sand and Debris</b>	<b>YES</b>
<b>1082</b>	<b>Lake #25</b>	<b>Lake End</b>	<b>90% Sand and Debris</b>	<b>YES</b>
19	Rapallo St	Manhole	10% Sand and Debris	NO
<b>20</b>	<b>Rapallo St</b>	<b>Curb</b>	<b>30% Sand and Debris</b>	<b>YES</b>
<b>21</b>	<b>Rapallo St</b>	<b>Curb</b>	<b>30% Sand and Debris</b>	<b>YES</b>
22	Rapallo St	Box	15% Sand and Debris	NO
23	Rapallo St	Box	10% Sand and Debris	NO
24	Rapallo St	Curb	20% Sand and Debris	NO
25	Rapallo St	Curb	10% Sand and Debris	NO
1081	Rapallo St	Manhole	10% Sand and Debris	NO

***WE SEE THINGS YOU CAN'T***

STRUCTURE #	LOCATION	TYPE/LAKE	CONDITION 2021	RECOMMEND CLEANING
1080AA	Rapallo St	Box	10% Sand and Debris	NO
<b>1080A</b>	<b>Lake # 25</b>	<b>Lake</b>	<b>Buried -Needs vegetation removed</b>	<b>YES</b>
29	Rapallo St	Box	10% Rocks, Sand and Debris	NO
<b>30</b>	<b>Rapallo St</b>	<b>Curb</b>	<b>25% Sand and Debris</b>	<b>YES</b>
<b>31</b>	<b>Rapallo St</b>	<b>Curb</b>	<b>50% Sand and Debris</b>	<b>YES</b>
32	Rapallo St	Curb	30% Sand & Debris	No
<b>33</b>	<b>Rapallo St</b>	<b>Curb</b>	<b>30% Sand and Debris</b>	<b>YES</b>
34	Rapallo St	Manhole	5% Sand and Debris	NO
<b>1076</b>	<b>Lake #24</b>	<b>Lake End</b>	<b>30% Sand and Debris</b>	<b>YES</b>
36	Rapallo St	Box	10% Sand and Debris	NO
<b>37</b>	<b>Rapallo St</b>	<b>Curb</b>	<b>40% Sand &amp; Debris</b>	<b>YES</b>
<b>38</b>	<b>Rapallo St</b>	<b>Curb</b>	<b>30% Sand and Debris</b>	<b>YES</b>
39	Rapallo St	Manhole	Clean	NO
40	Rapallo St	Manhole	Clean	NO
<b>1075</b>	<b>Lake #24</b>	<b>Lake End</b>	<b>50% Vegetation, Sand and Debris</b>	<b>YES</b>
42	Gallano Ter	Curb	10% Sand and Debris	NO
43	Gallano Ter	Curb	10% Sand and Debris	NO
<b>44</b>	<b>Lake #18-19</b>	<b>Lake End</b>	<b>25% Sand and Debris</b>	<b>YES</b>
45	Gallano Ter	Curb	5% Sand and Debris	NO
46	Gallano Ter	Curb	5% Sand & Debris	No
<b>47</b>	<b>Lake #18-19</b>	<b>Lake End</b>	<b>75% Sand and Debris</b>	<b>YES</b>
48	Gallano Ter	Curb	5% Sand and Debris	NO
49	Gallano Ter	Curb	5% Sand and Debris	NO
<b>50</b>	<b>Lake #17</b>	<b>Lake End</b>	<b>Buried</b>	<b>YES</b>
<b>51</b>	<b>Lake #18-19</b>	<b>Lake End</b>	<b>75% Sand and Debris -Needs Dredging</b>	<b>YES</b>
52	Livorno Court	Manhole	5% Sand and Debris	NO
53	Livorno Court	Curb	5% sand and Debris	NO

***WE SEE THINGS YOU CAN'T***



17891 Wetstone Road  
North Fort Myers, FL. 39917  
239-984-5241

STRUCTURE #	LOCATION	TYPE/LAKE	CONDITION 2021	RECOMMEND CLEANING
54	Livorno Court	Curb	5% Sand and Debris	NO
55	Lake #17	Lake End	Clean	NO
<b>56</b>	<b>Livorno Court</b>	<b>Curb</b>	<b>40% Sand and Debris</b>	<b>YES</b>
<b>57</b>	<b>Livorno Court</b>	<b>Curb</b>	<b>35% Sand and Debris</b>	<b>YES</b>
<b>58</b>	<b>Lake #18-19</b>	<b>Lake End</b>	<b>75% Sand and Debris- Needs Dredging</b>	<b>YES</b>
59	Livorno Court	Curb	5% Sand and Debris	NO
60	Livorno Court	Curb	5% Sand and Debris	NO
<b>61</b>	<b>Lake #18-19</b>	<b>Lake End</b>	<b>50% Sand and Debris</b>	<b>YES</b>
62	Terresina Dr	Curb	5% Sand and Debris-Removed grate Carpets	NO
63	Terresina Dr	Curb	5% Sand and Debris	NO
64	Lake #17	Lake End	5% Sand & Debris	No
65	Terresina Dr	Curb	5% Sand and Debris- Removed grate carpets	NO
66	Terresina Dr	Curb	5% Sand and Debris	NO
<b>67</b>	<b>Lake #17</b>	<b>Lake End</b>	<b>Buried</b>	<b>YES</b>
<b>68</b>	<b>Lake #5</b>	<b>Lake End</b>	<b>Buried</b>	<b>YES</b>
<b>69</b>	<b>Benvenuto Ct</b>	<b>Curb</b>	<b>40% Sand and Debris</b>	<b>YES</b>
70	Benvenuto Ct	Curb	20% Sand and Debris	NO
<b>71</b>	<b>Lake #17</b>	<b>Lake End</b>	<b>50% Sand and Debris</b>	<b>YES</b>
72	Terresina Dr	Curb	10% Sand and Debris	NO
73	Terresina Dr	Curb	Clean	NO
<b>74</b>	<b>Lake #16B</b>	<b>Lake End</b>	<b>50% Sand and Debris</b>	<b>YES</b>
<b>75</b>	<b>Lake #18-19</b>	<b>Lake End</b>	<b>50% Sand and Debris -Plywood</b>	<b>YES</b>
76	Terresina Dr	Curb	20% Sand and Debris	NO
77	Terresina Dr	Curb	5% Sand and Debris	NO
78	Terresina Dr	Manhole	20% Sand and Debris	NO
79	Terresina Dr	Manhole	10% Sand and Debris	NO

***WE SEE THINGS YOU CAN'T***

STRUCTURE #	LOCATION	TYPE/LAKE	CONDITION 2021	RECOMMEND CLEANING
<b>1112</b>	<b>Lake #14</b>	<b>Lake End</b>	<b>50% Sand and Debris</b>	<b>YES</b>
81	Esplanade Blvd	Curb	15% Sand and Debris	NO
<b>82</b>	<b>Esplanade Blvd</b>	<b>Curb</b>	<b>35% Sand and Debris</b>	<b>YES</b>
<b>83</b>	<b>Lake #14</b>	<b>Lake End</b>	<b>30% Sand and Debris</b>	<b>YES</b>
84	Esplanade Blvd	Curb	5% Sand and Debris	NO
85	Esplanade Blvd	Curb	10% Sand and Debris	NO
86	Lake #14	Lake End	Clean	NO
<b>87</b>	<b>Esplanade Blvd</b>	<b>Lake End</b>	<b>30% Sand and Debris</b>	<b>YES</b>
88	Esplanade Blvd	Curb	5% Sand and Debris	NO
89	Esplanade Blvd	Curb	5% Sand and Debris	NO
90	Lake #14	Lake End	20% Sand and Debris	NO
91	Lake #14	Lake End	Clean	NO
92	Trivoli Ter	Curb	20% Sand and Debris	NO
93	Trivoli Ter	Curb	20% Sand and Debris	NO
94	Lake #12	Lake End	10% Sand and Debris	NO
95	Trivoli Ter	Curb	10% Sand and Debris	NO
96	Trivoli Ter	Curb	10% Sand and Debris	NO
<b>97</b>	<b>Trivoli Ter</b>	<b>Lake End</b>	<b>30% Sand and Debris</b>	<b>YES</b>
98	Rialto Lane	Curb	5% Sand and Debris	NO
99	Rialto Lane	Curb	5% Sand and Debris	NO
100	Lake #14	Lake End	10% Sand and Debris	NO
101	Rialto Lane	Curb	10% Sand and Debris	NO
102	Rialto Lane	Curb	10% Sand and Debris	NO
103	Lake #14	Lake	Clean	NO
104	Esplanade Blvd	Curb	5% Sand and Debris	NO
105	Esplanade Blvd	Curb	5% Sand and Debris	NO
106	Lake #12	Lake End	15% Sand and Debris	NO

***WE SEE THINGS YOU CAN'T***

STRUCTURE #	LOCATION	TYPE/LAKE	CONDITION 2021	RECOMMEND CLEANING
107	Arrezo Ct	Curb	5% Sand and Debris	NO
108	Arrezo Ct	Curb	5% Sand and Debris	NO
109	Lake #12	Lake End	Clean	NO
110	Arrezo Ct	Curb	5% Sand and Debris	NO
111	Arrezo Ct	Curb	15% Sand and Debris	NO
112	Lake #12	Lake End	10% Sand & Debris	NO
113	Arrezo Ct	Curb	5% Sand and Debris	NO
114	Arrezo Ct	Curb	5% Sand and Debris	NO
115	Lake #12	Lake End	15% Sand and Debris	NO
116	Arrezo Ct	Curb	5% Sand and Debris	NO
117	Arrezo Ct	Curb	5% Sand and Debris	NO
<b>118</b>	<b>Arrezo Ct</b>	<b>Manhole</b>	<b>Buried</b>	<b>YES</b>
119	Lake #10	Lake End	5% Sand and Debris	NO
120	Arrezo Ct	Curb	5% Sand and Debris	NO
121	Arrezo Ct	Curb	5% Sand and Debris	NO
1106	Arrezo Ct	Box	5% Sand and Debris	NO
1107	Lake #13	Lake End	5% Sand and Debris	NO
124	Arrezo Ct	Box	5% Sand and Debris	NO
125	Arrezo Ct	Curb	5% Sand and Debris	NO
126	Arrezo Ct	Curb	10% Sand and Debris	NO
1105	Arrezo Ct	Box	10% Brick, Sand and Debris	NO
1104	Lake #13	Lake End	Clean	NO
<b>129</b>	<b>Lake #23</b>	<b>Lake End</b>	<b>95% Sand and Debris</b>	<b>YES</b>
<b>130</b>	<b>Arrezo Ct</b>	<b>Curb</b>	<b>25% Sand and Debris</b>	<b>YES</b>
<b>131</b>	<b>Arrezo Ct</b>	<b>Curb</b>	<b>30% Sand and Debris</b>	<b>YES</b>
<b>132</b>	<b>Arrezo Ct</b>	<b>Manhole</b>	<b>30% Sand and Debris</b>	<b>YES</b>
1101	Arrezo Ct	Box	Clean	NO

***WE SEE THINGS YOU CAN'T***

STRUCTURE #	LOCATION	TYPE/LAKE	CONDITION 2021	RECOMMEND CLEANING
1100	Arrezo Ct	Lake End	Clean	NO
135	Armour Ct	Curb	5% Sand and Debris	NO
<b>136</b>	<b>Lake #2</b>	<b>Lake End</b>	<b>45% Sand and Debris</b>	<b>YES</b>
137	Armour Ct	Curb	Clean	NO
138	Armour Ct	Curb	5% Sand and Debris	NO
139	Lake #2	Lake End	15% Sand and Debris	NO
140	Lake #3	Lake End	10% Sand and Debris	NO
141	Cavano Ct	Curb	5% Sand and Debris	NO
142	Cavano Ct	Curb	5% Sand and Debris	NO
143	Cavano Ct	Box	Clean	NO
144	Cavano Ct	Curb	Clean	NO
146	Cavano Ct	Box	5% Sand and Debris	NO
<b>147</b>	<b>Lake #5A</b>	<b>Lake End</b>	<b>45% Vegetation, Sand and Debris</b>	<b>YES</b>
148	Armour Ct	Curb	Clean	NO
149	Armour Ct	Curb	Clean	NO
150	Lake #3	Lake End	15% Vegetation, Sand and Debris	NO
151	Armour Ct	Curb	Clean	NO
152	Armour Ct	Curb	Clean	NO
153	Lake #3	Lake End	Clean	NO
154	Dilillo Ct	Box	Clean	NO
155	Dilillo Ct	Curb	15% Sand and Debris	NO
156	Dilillo Ct	Curb	15% Sand and Debris	NO
157	Lake #27	Lake End	20% Sand and Debris	NO
158	Cavano Ct	Curb	Clean	NO
159	Cavano Ct	Curb	Clean	NO
160	Cavano Ct	Manhole	5% Sand and Debris	NO
161	Cavano Ct	Manhole	5% Sand and Debris	NO

***WE SEE THINGS YOU CAN'T***

STRUCTURE #	LOCATION	TYPE/LAKE	CONDITION 2021	RECOMMEND CLEANING
162	Lake #25	Lake End	5% Sand and Debris	NO
163	Lake #25	Lake End	20% Sand and Debris	NO
	<b>Cavano Ct</b>	<b>Curb</b>	<b>95% Sand and Debris</b>	<b>YES</b>
<b>165</b>	<b>Cavano Ct</b>	<b>Curb</b>	<b>95% Sand and Debris</b>	<b>YES</b>
<b>166</b>	<b>Lake #27</b>	<b>Lake End</b>	<b>60% Sand and Debris</b>	<b>YES</b>
167	Cavano Ct	Curb	10% Sand and Debris	NO
168	Cavano Ct	Curb	10% Sand & Debris	NO
169	Cavano Ct	Manhole	5% Sand and Debris	NO
<b>170</b>	<b>Lake #25</b>	<b>Lake End</b>	<b>25% Sand and Debris</b>	<b>YES</b>
171	Bello Court	Curb	5% Sand and Debris	NO
172	Bello Court	Curb	10% Sand and Debris	NO
<b>173</b>	<b>Lake #5B</b>	<b>Lake End</b>	<b>25% Vegetation, Sand and Debris</b>	<b>YES</b>
174	Torre Vista	Curb	10% Sand and Debris	NO
175	Torre Vista	Curb	10% Sand and Debris	NO
<b>1067</b>	<b>Lake #8</b>	<b>Lake End</b>	<b>Buried</b>	<b>YES</b>
1070	Torre Vista	Curb	10% Sand and Debris	NO
178	Torre Vista	Curb	10% Sand and Debris	NO
179	Torre Vista	Box	10% Sand and Debris	NO
180	Torre Vista	Manhole	5% Sand and Debris	NO
181	Lake #8	Lake End	20% Vegetation, Sand and Debris	NO
182	Savona Ct	Curb	Clean	NO
183	Savona Ct	Curb	Clean	NO
<b>184</b>	<b>Savona Ct</b>	<b>Lake End</b>	<b>45% Sand and Debris</b>	<b>YES</b>
185	Savona Ct	Curb	Clean	NO
186	Savona Ct	Curb	5% Sand and Debris	NO
187	Savona Ct	Lake End	5% Vegetation, Sand and Debris	NO
188	Vaccaro CT	Curb	10% Sand and Debris	NO

***WE SEE THINGS YOU CAN'T***

STRUCTURE #	LOCATION	TYPE/LAKE	CONDITION 2021	RECOMMEND CLEANING
189	Vaccaro CT	Curb	10% Sand and Debris	NO
<b>190</b>	Vaccaro CT	<b>Lake End</b>	<b>45% Vegetation, Sand and Debris</b>	<b>YES</b>
191	Vaccaro CT	Box	10% Sand and Debris	NO
192	Vaccaro CT	Box	Clean	NO
193	Vaccaro CT	Curb	15% Sand and Debris	NO
194	Vaccaro CT	Curb	10% Sand and Debris	NO
<b>195</b>	<b>Lake #19</b>	<b>Lake End</b>	<b>Buried - Vegetation</b>	<b>YES</b>
<b>1122</b>	<b>Lake #7</b>	<b>Lake End</b>	<b>100% Sand and Debris</b>	<b>YES</b>
<b>CS 03</b>		<b>Control Structure</b>	<b>50% Sand and Debris</b>	<b>YES</b>
<b>1123</b>		<b>Long Skinny Edge</b>	<b>Buried</b>	<b>YES</b>
<b>1074</b>	<b>Lake #24</b>	<b>Lake End</b>	<b>Buried -Vegetation</b>	<b>YES</b>
<b>1073</b>	<b>Lake #7</b>	<b>Lake End</b>	<b>100% Sand and Debris</b>	<b>YES</b>
201	Savona Ct	Curb	20% Sand and Debris	NO
202	Savona Ct	Curb	20% Sand and Debris	NO
<b>203</b>	<b>Lake # 9</b>	<b>Lake End</b>	<b>45% Sand and Debris</b>	<b>YES</b>
<b>204</b>	<b>Esplanade Blvd</b>	<b>Curb</b>	<b>30% Sand and Debris</b>	<b>YES</b>
<b>205</b>	<b>Esplanade Blvd</b>	<b>Curb</b>	<b>25% Sand and Debris</b>	<b>YES</b>
<b>206</b>	<b>Lake #10</b>	<b>Lake</b>	<b>40% Sand &amp; Debris</b>	<b>Yes</b>
<b>1170</b>	<b>Lake #15B</b>	<b>Lake End</b>	<b>80% Sand &amp; Debris</b>	<b>Yes</b>
1111	Lake #14	Lake End	10% Sand and Debris	No
1251	Lake #23	Lake End	10% Sand & Debris	No
CS-1250	Control Structure		10% Sand & Debris	No
CS-10	Amenity Center	Box	10% Sand & Debris	No
10A	Amenity Center	Box	10% Sand & Debris	No
<b>10B</b>	<b>Amenity Center</b>	<b>Box</b>	<b>25% Sand &amp; Debris</b>	<b>Yes</b>
<b>10C</b>	<b>Amenity Center</b>	<b>Box</b>	<b>25% Sand &amp; Debris</b>	<b>YES</b>
<b>10D</b>	<b>Amenity Center</b>	<b>Box</b>	<b>30% Sand &amp; Debris</b>	<b>YES</b>

***WE SEE THINGS YOU CAN'T***

STRUCTURE #	LOCATION	TYPE/LAKE	CONDITION 2021	RECOMMEND CLEANING
<b>10E</b>	<b>Amenity Center</b>	<b>Box</b>	<b>Buried</b>	<b>YES</b>
<b>10F</b>	<b>Amenity Center</b>	<b>Box</b>	<b>35% Sand &amp; Debris</b>	<b>YES</b>
<b>10G</b>	<b>Amenity Center</b>	<b>Box</b>	<b>25% Sand &amp; Debris</b>	<b>YES</b>
<b>10H</b>	<b>Amenity Center</b>	<b>Box</b>	<b>Buried</b>	<b>YES</b>
10-I	Amenity Center	Box	10% Sand & Debris	No
10J	Amenity Center	Box	10% Sand & Debris	No
<b>10K</b>	<b>Amenity Center</b>	<b>Box</b>	<b>30% Sand &amp; Debris</b>	<b>YES</b>
<b>10 L</b>	<b>Amenity Center</b>	<b>Box</b>	<b>25% Sand &amp; Debris</b>	<b>YES</b>
<b>10M</b>	<b>Amenity Center</b>	<b>Curb</b>	<b>30% Sand &amp; Debris</b>	<b>YES</b>

***WE SEE THINGS YOU CAN'T***

# **APPENDIX F**

**(Mettauer Report)**



Inspection reference: 08202020 Esplanade Golf And Country Club

## Confidential Inspection Report



Prepared for:

This report is the exclusive property of the inspection company and the client whose name appears herewith and its use by any unauthorized persons is prohibited.

# BID INSPECTION FORM

**Lake 1**

*Algae?*

No.



*Floating Vegetation?*

There is surface vegetation present. Spadderdock.

*Is Vegetation Thriving?*

The vegetation is thriving. Spadderdock.

*Subsurface Vegetation?*

There is no subsurface vegetation present.

*Emergent Vegetation*

There is emergent vegetation present. Torpedo Grass.

*Is Vegetation Thriving?*

The vegetation is not thriving.

*Clarity:*

Water clarity is over two feet.

*Outflow?*

The lake is out flowing at time of inspection.

*Littoral Shelf Present?*

There is a littoral shelf present. Pickeralweed, Softstem Bulrush, Arrowhead, Fakahatchee Grass, Muhly Grass, Bacopa.



*Plants Needed?*  
*Aeration Present?*  
*Fountain present?*  
*Action Steps*

Littoral plants are not needed at this time.  
There is no aeration present on the lake.  
There is no fountain present.  
Spadderdock topped out in lake. Cattails growing in spots along lake bank. Beneficials were sprayed during last terrestrial treatment. Some beneficials have vines overgrowing them. Huge Brazilian Pepper found on shoreline within littoral zone.

**Lake 2**

*Algae?*

Yes, Filamentous, No.





*Algae Coverage Percent*

0-25%

*Floating Vegetation?*

There is surface vegetation present. Spadderdock.

*Is Vegetation Thriving?*

The vegetation is thriving. Spadderdock.

*Emergent Vegetation*

There is emergent vegetation present. Torpedo Grass.

*Is Vegetation Thriving?*

The vegetation is thriving. Torpedo Grass.

*Clarity:*

Water clarity is one to two feet.

*Littoral Shelf Present?*

There is a littoral shelf present. Softstem Bulrush, Arrowhead, Fakahatchee Grass, Muhly Grass, Bacopa.



*New Growth?*

There is no new littoral growth present.

*Plants Needed?*

Littoral plants are not needed at this time.

*Aeration Present?*

There is no aeration present on the lake.

*Fountain present?*

There is no fountain present.

*Action Steps*

Spadderdock is out of control topped out through lake. Trace algae along shoreline. Vines over growing beneficials. Trash along shoreline.

**Lake 3**

*Algae?*

No.



*Is Vegetation Thriving?*

*Floating Vegetation?*

There is surface vegetation present. Spadderdock.

*Emergent Vegetation*

The vegetation is thriving.

*Clarity:*

There is no emergent vegetation present.

*Littoral Shelf Present?*

Water clarity is one to two feet.

There is a littoral shelf present. Softstem Bulrush, Arrowhead, Fakahatchee Grass, Muhly Grass.



*New Growth?*

There is no new littoral growth present.

*Plants Needed?*

Littoral plants are not needed at this time.

*New Erosion?*

There is no new erosion present at the time of inspection.

*Aeration Present?*

There is no aeration present on the lake.

*Fountain present?*

There is no fountain present.

*Action Steps*

Spadderdock topped out. Littoral zone over grown throughout with vines.

**Lake 2**

*Algae?*



**Lake 4**

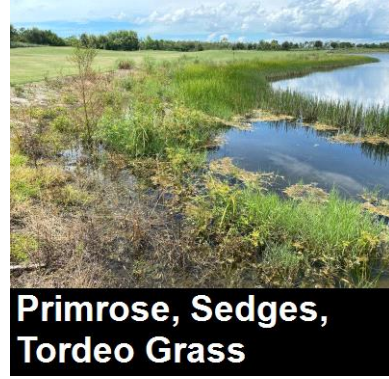
*Algae?*

No.



*Floating Vegetation?*  
*Is Vegetation Thriving?*  
*Subsurface Vegetation?*  
*Emergent Vegetation*

There is surface vegetation present. Spadderdock.  
The vegetation is thriving.  
There is no subsurface vegetation present.  
There is emergent vegetation present. Torpedo Grass, Cattails, Primrose, Hemp Vine, Dog Fennel.



**Primrose, Sedges, Tordeo Grass**

*Is Vegetation Thriving?*

The vegetation is thriving.

*Clarity:*

Water clarity is over two feet.

*Littoral Shelf Present?*

There is a littoral shelf present. Pickeralweed, Softstem Bulrush, Arrowhead, Fakahatchee Grass, Muhly Grass, Bacopa.



**Trash along shoreline**



**Vines growing over cordgrass and ground**

*New Growth?*

There is no new littoral growth present.

*Plants Needed?*

Additional littoral plants are recommended at this time.

*New Erosion?*

There is new erosion present at the time of inspection.

*Aeration Present?*

There is no aeration present on the lake.

*Fountain present?*

There is no fountain present.

*Action Steps*

Spatterdock scattered throughout lake overgrown sedge and Primrose along edge with scattered torpedo grass clumps trash scattered along shoreline vines growing in littoral zone. Erosion starting to happen in areas along homeowner side of lake bank.

**Lake 5**

*Algae?*

Yes, Filamentous.



*Algae Coverage Percent*

0-25%

*Floating Vegetation?*

There is surface vegetation present. Spadderdock.

*Is Vegetation Thriving?*

The vegetation is thriving. Spadderdock.

*Subsurface Vegetation?*

There is subsurface vegetation present. Red Ludwigia There is no subsurface vegetation present.



**Red Ludwigia**

*Emergent Vegetation*

*Is Vegetation Thriving?* The vegetation is thriving. Red Ludwigia.  
 There is emergent vegetation present. Torpedo Grass, Cattails, Primrose, Ragweed, Dog Fennel.

*Is Vegetation Thriving?*

The vegetation is thriving.

*Clarity:*

Water clarity is over two feet.

*Littoral Shelf Present?*

There is a littoral shelf present. Softstem Bulrush, Fakahatchee Grass, Muhly Grass.



**Established Torpedo grass and primrose**

*Plants Needed?*

*New Growth?* There is no new littoral growth present.

*New Erosion?*

Littoral plants are not needed at this time.

*Aeration Present?*

There is no new erosion present at the time of inspection.

*Fountain present?*

There is no aeration present on the lake.

*Action Steps*

There is no fountain present.

Spatterdock scattered in areas spotty a lot of tall dogfennel all around entire lake. primrose.

Littorals overgrown with torpedo grass sedges and vines.

**Lake 6**

*Algae?*

Yes, Filamentous.



**Alligator during inspection**



*Algae Coverage Percent*  
*Floating Vegetation?*  
*Is Vegetation Thriving?*  
*Subsurface Vegetation?*

0-25%  
 There is surface vegetation present. Spadderdock, Crested Floating Heart.  
 The vegetation is thriving. Spadderdock, Crested Floating Heart.  
 There is subsurface vegetation present. Pondweed and coontail.



*Emergent Vegetation*  
*Is Vegetation Thriving?*  
*Clarity:*

*Is Vegetation Thriving?* The vegetation is thriving.  
 There is emergent vegetation present. Torpedo Grass.  
 The vegetation is thriving. The vegetation is not thriving.  
 Water clarity is over two feet.



**Vines overgrowing beneficials**



**Established Torpedo grass**

*Aeration Present?*  
*Littoral Shelf Present?*  
*Fountain present?*  
*Action Steps*

There is no aeration present on the lake.  
 Pickerelweed, Softstem Bulrush, Giant Bulrush, Arrowhead, Fakahatchee Grass, Muhly  
 There is no fountain present.  
 Spatterdock scattered throughout entire lake Watermilfol and pawn weed present large patches of torpedo grass Melaleuca saplings dogs and all scattered throughout the littoral zone vines growing over the littorals alligator present in lake during inspection.

**Lake 7**

*Algae?*

No.



*Floating Vegetation?*

There is surface vegetation present. Spadderdock, There is no floating vegetation present.

*Is Vegetation Thriving?*

The vegetation is thriving.

*Subsurface Vegetation?*

There is subsurface vegetation present. Watermilfol.



**Watermilfoil**

*Emergent Vegetation*

There is emergent vegetation present. Torpedo Grass, Dog Fennel.

*Is Vegetation Thriving?*

The vegetation is thriving.

*Clarity:*

Water clarity is over two feet.



**Vines overgrowing  
beneficials**



**Torpedo Grass**

*New Growth?*

There is no new littoral growth present.

*Littoral Shelf Present?*

Softstem Bulrush, Arrowhead, Fakahatchee Grass, Muhly Grass.

*Aeration Present?*

There is no aeration present on the lake.

*Fountain present?*

There is no fountain present.

*Action Steps*

Spattered the scattered throughout Lake torpedo grass send ring all the way around water mill foil along edge vines on beneficial as peppers scattered through out the littorial zone.

**Lake 8**

*Algae?*

Yes, Filamentous.



*Algae Coverage Percent*

0-25%

*Floating Vegetation?*

There is surface vegetation present. Spadderdock.

*Is Vegetation Thriving?*

The vegetation is thriving.

*Subsurface Vegetation?*

There is subsurface vegetation present. Watermilfol.



**Watermilfoil**

*Emergent Vegetation*

Torpedo Grass, Cattails, Primrose, Dog Fennel.

*Is Vegetation Thriving?*

The vegetation is thriving. Torpedo Grass.

*Clarity:*

Water clarity is over two feet.

*Outflow?*

The lake is out flowing at time of inspection.

*Littoral Shelf Present?*

There is a littoral shelf present. Softstem Bulrush, Arrowhead, Fakahatchee Grass, Muhly Grass.



**Trash along shoreline**

*New Erosion?*

There is new erosion present at the time of inspection.



**Washout found**

*Aeration Present?*

There is no aeration present on the lake.

*Fountain present?*

There is no fountain present.

*Action Steps*

Spatterdock scattered throughout lake Taquito grass scattered around Shoreline dog fennel around edge trimmer is scattered Watermill for all scattered through our shoreline trash seen during inspection erosion found on corner behind homeowners house Melaleuca trees out in littoral zone scattered around Shoreline edge.

**Lake 9**

*Algae?*

No.



*Floating Vegetation?*

There is surface vegetation present. Spadderdock.

*Is Vegetation Thriving?*

The vegetation is thriving.

*Subsurface Vegetation?*

There is no subsurface vegetation present.

*Emergent Vegetation*

There is emergent vegetation present. Torpedo Grass.

*Is Vegetation Thriving?*

The vegetation is thriving. Torpedo Grass.

*Clarity:*

Water clarity is over two feet.

*Littoral Shelf Present?*

There is a littoral shelf present. Softstem Bulrush, Arrowhead, Fakahatchee Grass, Muhly Grass.

*New Growth?*

There is no new littoral growth present.

*Fountain present?*

There is no fountain present.

*Action Steps*

Large amount of spatter dock on lake torpedo grass scattered throughout beneficials dog fennel spotty on Shoreline Vines over growing.



**Vines overgrowing beneficials**



**Vines overgrowing bullrush**

**Lake 10**  
*Is Vegetation Thriving?*  
*Algae?*

The vegetation is thriving. Torpedo Grass, Hemp Vine, Ragweed, Dog Fennel.  
 No.



*Is Vegetation Thriving?*  
*Subsurface Vegetation?*  
*Emergent Vegetation*

*Floating Vegetation?* There is surface vegetation present. Spadderdock.  
 The vegetation is thriving. Spadderdock.  
 There is no subsurface vegetation present.  
 There is emergent vegetation present. Torpedo Grass, Cattails, Hemp Vine, Ragweed, Dog Fennel.

*Clarity:*  
*Littoral Shelf Present?*  
*New Growth?*  
*Aeration Present?*  
*Fountain present?*  
*Action Steps*

Water clarity is over two feet.  
 There is a littoral shelf present. Softstem Bulrush, Arrowhead, Fakahatchee Grass, Muhly Grass.  
 There is no new littoral growth present.  
 There is no aeration present on the lake.  
 There is no fountain present.  
 Spatterdock scattered along edge of Lake Melaleuca saplings growing along edge ragweed and dog fennel growing along edge vines over growing beneficials heavily everywhere.

**Lake 11**  
*Algae?*

No.



*Is Vegetation Thriving?*

*Floating Vegetation?* There is surface vegetation present. Spadderdock.  
 The vegetation is thriving. Spadderdock.

*Emergent Vegetation*  
*Is Vegetation Thriving?*  
*Clarity:*  
*Littoral Shelf Present?*

There is emergent vegetation present. Torpedo Grass, Primrose, Hemp Vine, Melaleuca.  
 The vegetation is thriving. Torpedo Grass, Hemp Vine, Melaleuca.  
 Water clarity is over two feet.  
 There is a littoral shelf present. Softstem Bulrush, Arrowhead, Fakahatchee Grass, Muhly Grass, Bacopa.



**Melaluca growing within littorial zone**

*Aeration Present?*  
*Fountain present?*  
*Action Steps*

*New Growth?*  
 There is no new littoral growth present.  
 There is no aeration present on the lake.  
 There is no fountain present.  
 Spatterdock spotty torpedo grass body heavy vines on beneficials multiple mature Melaleucas around various spots on lake.

**Lake 12**

*Algae?*



*Is Vegetation Thriving?*  
*Subsurface Vegetation?*  
*Emergent Vegetation*  
  
*Is Vegetation Thriving?*  
*Clarity:*  
*Littoral Shelf Present?*

*Floating Vegetation?*  
 There is surface vegetation present. Spadderdock.  
 The vegetation is not thriving.  
 There is no subsurface vegetation present.  
 There is emergent vegetation present. Torpedo Grass, Cattails, Ragweed, Dog Fennel, Sedges.  
 The vegetation is thriving. Torpedo Grass, Hemp Vine.  
 Water clarity is over two feet.  
 There is a littoral shelf present. Softstem Bulrush, Arrowhead, Fakahatchee Grass, Muhly Grass, Bacopa.



Algae Coverage Percent 0-25%



**Dogfennel and sedges with littoral zone**

*Aeration Present?* There is no aeration present on the lake.  
*Fountain present?* There is no fountain present.  
*Action Steps* Spotty Spatterdock throughout lake spotty torpedo grass heavy vines and beneficial zones sedges as well.

*New Growth?* There is no new littoral growth present.

**Lake 13**

*Algae?* Yes, Filamentous.

*Floating Vegetation?* There is surface vegetation present. Spadderdock.

*Is Vegetation Thriving?* The vegetation is thriving. Spadderdock.

*Emergent Vegetation* There is emergent vegetation present. Torpedo Grass, Hemp Vine, Dog Fennel.

*Is Vegetation Thriving?* The vegetation is thriving. Torpedo Grass.

*Clarity:* Water clarity is one to two feet.

*Littoral Shelf Present?* There is a littoral shelf present. Softstem Bulrush, Arrowhead, Fakahatchee Grass, Muhly Grass.



**Cattail Clump**



**Arrowhead overgrown with vines**



**Trash found along shoreline**

*New Growth?*

There is no new littoral growth present.

*Aeration Present?*

There is no aeration present on the lake.

*Fountain present?*

There is no fountain present.

*Action Steps*

Spotty Spatterdock spotty torpedo grass in beneficials heavy vine growth and beneficial algae clumps along shoreline sedges spread throughout.

**Lake 14**

*Algae?*

No.



There is surface vegetation present. Spatterdock.

*Is Vegetation Thriving?*

The vegetation is not thriving.

*Subsurface Vegetation?*

There is subsurface vegetation present. Watermilfoil.

*Is Vegetation Thriving?*

The vegetation is not thriving.

*Emergent Vegetation*

There is emergent vegetation present. Torpedo Grass, Cattails, Primrose, Hemp Vine, Sedges.

*Is Vegetation Thriving?*

The vegetation is thriving. Torpedo Grass, Cattails, Hemp Vine, Sedges.

*Clarity:*

Water clarity is over two feet.

*Littoral Shelf Present?*

There is a littoral shelf present. Softstem Bulrush, Arrowhead, Fakahatchee Grass, Muhly Grass, Bacopa.



**Trash and tiles found along shoreline**



**Sappling Earleaf within littorial zone**





**Large established clump of cattails**



**Torpedo grass and Primrose**

*New Growth?*

*Plants Needed?*

*New Erosion?*

There is no new littoral growth present.

Additional littoral plants are recommended at this time.

There is new erosion present at the time of inspection.

There is new erosion present at the time of inspection.

There is new erosion present at the time of inspection.

There is new erosion present at the time of inspection.

There is new erosion present at the time of inspection.



**Washout found during inspection**



**Drainage pipe causing washout**



**Pipe not anchored down**



**Washout**



**Drainage pipe broke causing washout**



**different angle of disconnected pipe**



**Washout starting**



**Samll washout starting no plants**

Consider Repair?  
Aeration Present?  
Fountain present?  
Action Steps

Repair should be considered at this time.  
There is no aeration present on the lake.  
There is no fountain present.

Very spotty Spatterdock spotty Watermilfol multiple washouts around homeowner side of lake Cattail clump. Primrose. Vines over growing beneficials in multiple spots. Eat leaf on shoreline.

**Lake 15**

Algae?  
Floating Vegetation?  
Is Vegetation Thriving?  
Emergent Vegetation

No.  
There is surface vegetation present. Spadderdock, Crested Floating Heart.  
The vegetation is not thriving.  
There is emergent vegetation present. Torpedo Grass, Cattails, Hemp Vine, Ragweed, Dog Fennel, Brazilian pepper sapplings sedges.



**Vines overgrowing cordgrass**

Is Vegetation Thriving?  
Torpedo Grass, Hemp Vine, Ragweed, Dog Fennel, Sedges.

Clarity:  
Littoral Shelf Present?

Water clarity is over two feet.  
There is a littoral shelf present. Softstem Bulrush, Arrowhead, Fakahatchee Grass, Muhly Grass.



**Large segdge growing within littorial zone**



**Primrose scattered through zone**



**Another area overgrown with vines**

*New Growth?*  
*New Erosion?*  
*Aeration Present?*  
*Fountain present?*  
*Action Steps*

There is no new littoral growth present.  
 There is new erosion present at the time of inspection.  
 There is no aeration present on the lake.  
 There is no fountain present.  
 Very spotty Spatterdock and floating hearts vines heavily over growing beneficials spotty cattails Brazilian pepper saplings spread throughout the Littorial zone small erosion visible on homeowner side of Lake will become an issue in the near future.

**Lake 16**

*Algae?*

No.



**Alligator along edge of shoreline**



*Floating Vegetation?*  
*Emergent Vegetation*

There is no floating vegetation present.  
 There is emergent vegetation present. Torpedo Grass, Primrose, Dog Fennel.

*Is Vegetation Thriving?*

The vegetation is thriving. Torpedo Grass, Primrose, Ragweed.



**Patch of crowsfoot on shoreline**



**Large primrose in lake**



**Large patch of crowsfoot on shoreline**



**trash found in washout**

*New Growth?*

There is no new littoral growth present.

*Littoral Shelf Present?*

There is a littoral shelf present. Softstem Bulrush, Arrowhead, Canna.

*Plants Needed?*

Additional littoral plants are recommended at this time. Level of Urgency- Now.

*New Erosion?*

There is new erosion present at the time of inspection.



**small washout starting**



**Sprinkler laying down causing washout**



**Deep washout**



**Large washout needs attention**



**Large washout in corner of lake**



**Hidden washout**



**Washout and escarment along homeowner side**

*Aeration Present?*  
*Fountain present?*  
*Action Steps*

There is no aeration present on the lake.

There is no fountain present.

Spotty floating hearts torpedo grass Primrose sedges crows foot everywhere ragweed alligator seen during inspection huge washouts everywhere along Shoreline.

**Lake 17**

*Algae?*

No.



*Is Vegetation Thriving?*  
*Emergent Vegetation*

*Floating Vegetation?* There is surface vegetation present. Spadderdock.  
The vegetation is not thriving.  
There is emergent vegetation present. Torpedo Grass, Cattails, Primrose, Hemp Vine, Ragweed, Dog Fennel, Ceaser weed.



**Very large ceaserweed found in zone**



**More ceaserweed and primrose**



**Ceaserweed and dogfennel**

*Is Vegetation Thriving?*

The vegetation is thriving. Torpedo Grass, Cattails, Primrose, Pennywort/Dollarweed, Ragweed, Dog Fennel, Ceaser weed.

*Clarity:*

Water clarity is one to two feet.

*Littoral Shelf Present?*

There is a littoral shelf present. Softstem Bulrush, Arrowhead, Fakahatchee Grass, Muhly Grass, Bacopa.

*New Growth?*

There is no new littoral growth present.

*Plants Needed?*

Additional littoral plants are recommended at this time. Level of Urgency- Now.

*Aeration Present?*

There is no aeration present on the lake.

*Fountain present?*

There is no fountain present.

*Action Steps*

Spotty Spatterdock vines in beneficials crowsfoot ceaser weed dog fennel growing everywhere. Small washed out scattered throughout shoreline.

**Lake 18**

*Algae?*



*Floating Vegetation?*  
*Is Vegetation Thriving?*  
*Emergent Vegetation*  
*Is Vegetation Thriving?*  
*Clarity:*  
*Littoral Shelf Present?*

There is surface vegetation present. Spadderdock.  
 The vegetation is not thriving.  
 There is emergent vegetation present. Torpedo Grass, Primrose, Carolina Willows, Hemp Vine.  
 The vegetation is thriving. Torpedo Grass, Carolina Willows.  
 Water clarity is over two feet.  
 There is a littoral shelf present. Softstem Bulrush, Arrowhead.



**Trash in lake**



**More trash in lake**

*New Growth?*  
*Plants Needed?*  
*Aeration Present?*

There is no new littoral growth present.  
 Additional littoral plants are recommended at this time. Level of Urgency- This Year.  
 There is no aeration present on the lake.

*Fountain present?*

There is no fountain present.

*Action Steps*

Very spotty Spatterdock trash littering shoreline everywhere minimal vines on cord grass not many varieties of beneficials on Lake homeowner side needs littorals.

**Lake 19**

*Algae?*

No.



*Floating Vegetation?*

There is surface vegetation present. Crested Floating Heart.

*Is Vegetation Thriving?*

The vegetation is not thriving.

*Emergent Vegetation*

There is emergent vegetation present. Torpedo Grass, Cattails, Hemp Vine, Ragweed, Dog Fennel.

*Clarity:*

Water clarity is over two feet.

*Littoral Shelf Present?*

There is a littoral shelf present. Softstem Bulrush, Arrowhead, Fakahatchee Grass, Muhly Grass.



*New Growth?*

There is no new littoral growth present.

*Aeration Present?*

There is no aeration present on the lake.

*Fountain present?*

There is no fountain present.

*Action Steps*

Very spotty floating hearts vines over growing beneficials spotty dog fennel cattails and primrose Shoreline a long road way is completely overgrown with torpedo grass crows foot dog kennel a lot of work.



**Lake 20**



*Floating Vegetation?*

There is surface vegetation present. Spadderdock.

*Algae?*

No.

*Is Vegetation Thriving?*

The vegetation is not thriving.

*Emergent Vegetation*

Torpedo Grass, Primrose, Hemp Vine, Dog Fennel.



*New Growth?*



*Is Vegetation Thriving?*

The vegetation is thriving. Torpedo Grass.

*Clarity:*

Water clarity is one to two feet.

*Littoral Shelf Present?*

There is a littoral shelf present. Softstem Bulrush, Arrowhead, Fakahatchee Grass, Muhly Grass.

*Aeration Present?*

There is no aeration present on the lake.

*Fountain present?*

There is no fountain present.

*Action Steps*

Very spotty Spatterdock vines over growing beneficial is spotty dog fennel a lot of trash Very large Melaleuca growing on Shoreline picture taken.

**Lake 21**

*Algae?*

No.



*Floating Vegetation?*

There is surface vegetation present. Spatterdock.

*Is Vegetation Thriving?*

The vegetation is not thriving.

*Emergent Vegetation*

There is emergent vegetation present. Torpedo Grass, Primrose, Dog Fennel.

*Is Vegetation Thriving?*

The vegetation is thriving. Torpedo Grass, Dog Fennel.

*Clarity:*

Water clarity is one to two feet.

*Littoral Shelf Present?*

There is a littoral shelf present. Softstem Bulrush, Arrowhead, Fakahatchee Grass, Muhly Grass.



*New Growth?*

*Aeration Present?*

*Fountain present?*

*Action Steps*

There is no new littoral growth present.

There is no aeration present on the lake.

There is no fountain present.

Spotty spatterdock Vines spotty throughout the Littoral zone large large Melaleuca on Shoreline small sapling pepper trees and lead tree rosary pea also present.

**Lake 22**

*Algae?*

No.



*Floating Vegetation?*

There is surface vegetation present. Spatterdock.

*Is Vegetation Thriving?*

The vegetation is thriving. Spatterdock.

*Emergent Vegetation*

There is emergent vegetation present. Torpedo Grass, Cattails, Primrose, Carolina Willows, Dog Fennel, Melaleuca.

*Is Vegetation Thriving?*

The vegetation is thriving. Torpedo Grass, Primrose, Dog Fennel.

*Clarity:*

Water clarity is over two feet.

*Littoral Shelf Present?*

There is a littoral shelf present. Softstem Bulrush, Arrowhead, Fakahatchee Grass, Muhly Grass, Bacopa.



**Vines overgrowing**

There is no new littoral growth present.

*Aeration Present?*  
*Fountain present?*  
*Action Steps*

*New Growth?* There is no new littoral growth present.  
 There is no aeration present on the lake.  
 There is no fountain present.  
 Scattered Spatterdock vines over growing beneficials scattered dog fennel scattered Melaleuca scattered sedges.

**Lake 23**

*Algae?*

No.



*Floating Vegetation?*  
*Is Vegetation Thriving?*  
*Subsurface Vegetation?*  
*Emergent Vegetation*  
*Is Vegetation Thriving?*  
*Clarity:*

There is surface vegetation present. Spadderdock.  
 The vegetation is not thriving.  
 There is subsurface vegetation present. Watermilfol.  
 There is emergent vegetation present. Torpedo Grass, Cattails, Primrose, Hemp Vine, Dog Fennel.  
 The vegetation is thriving. Torpedo Grass, Hemp Vine.  
 Water clarity is one to two feet.



**Vines taking over zone**



**More vines**

*New Growth?*  
*Littoral Shelf Present?*

There is no new littoral growth present.  
 Softstem Bulrush, Arrowhead, Fakahatchee Grass, Muhly Grass.

*Aeration Present?*  
*Fountain present?*  
*Action Steps*

There is no aeration present on the lake.  
 There is no fountain present.  
 Very spotty Spatterdock vines over growing most all beneficials dog fennel scattered along shoreline.

**Lake 24**

*Algae?*

Yes, Filamentous.



*Floating Vegetation?*

There is surface vegetation present. Spadderdock.

*Is Vegetation Thriving?*  
*Emergent Vegetation*

The vegetation is not thriving.  
 There is emergent vegetation present. Torpedo Grass, Cattails, Primrose, Carolina Willows, Hemp Vine, Dog Fennel, Melaleuca.

*Is Vegetation Thriving?*  
*Clarity:*

The vegetation is thriving. Torpedo Grass, Melaleuca.  
 Water clarity is less than one foot.

*Littoral Shelf Present?*

Softstem Bulrush, Fakahatchee Grass, Muhly Grass, Bacopa.



**Trash in littoral zone**



**Vines overgrowing cordgrass**



**Small melaleuca spread throughout zone**

*New Growth?*  
*Aeration Present?*  
*Fountain present?*

There is no new littoral growth present.  
 There is no aeration present on the lake.  
 There is no fountain present.

Action Steps

Very scattered Spatterdock vines over growing beneficials trash along the shoreline a lot of Melaleuca a long shoreline and in Latorial zone.

**Lake 25**

Algae?



Floating Vegetation?

There is surface vegetation present. Spadderdock.

Is Vegetation Thriving?

The vegetation is thriving. Spadderdock.

Emergent Vegetation

There is emergent vegetation present. Torpedo Grass.

Is Vegetation Thriving?

The vegetation is thriving. Torpedo Grass.

Clarity:

Water clarity is one to two feet.

Littoral Shelf Present?

There is a littoral shelf present. Softstem Bulrush, Muhly Grass.



**Mexican**

New Growth?

There is no new littoral growth present.

Aeration Present?

There is no aeration present on the lake.

Fountain present?

There is no fountain present.

Action Steps

A lot of Spatterdock Mexican petunia throughout beneficial areas vines over growing beneficials in spots Large drop off in bank meant very steep.

**Lake 26**

Algae?

No.



Floating Vegetation?

There is no floating vegetation present.

Emergent Vegetation

There is emergent vegetation present. Torpedo Grass, Hemp Vine, Dog Fennel.

Is Vegetation Thriving?

The vegetation is not thriving.

Clarity: Water clarity is one to two feet.



*New Growth?* There is no new littoral growth present.

*Littoral Shelf Present?* There is a littoral shelf present. Softstem Bulrush, Fakahatchee Grass.

*Aeration Present?* There is no aeration present on the lake.

*Fountain present?* There is no fountain present.

*Action Steps* Very spotty Spatterdock spotty vines in beneficials overall lake looks pretty good.

**Lake 27**

*Algae?* Yes, Filamentous.



*Floating Vegetation?* There is no floating vegetation present.

*Emergent Vegetation* There is emergent vegetation present. Torpedo Grass, Primrose, Hemp Vine, Ragweed, Dog Fennel.

*Is Vegetation Thriving?* The vegetation is thriving. Torpedo Grass, Primrose, Ragweed, Dog Fennel.

*Clarity:* Water clarity is one to two feet.

*Littoral Shelf Present?* There is a littoral shelf present. Softstem Bulrush, Muhly Grass.



*New Growth?* There is no new littoral growth present.

*Plants Needed?* Additional littoral plants are recommended at this time. Level of Urgency- Now.

*Aeration Present?* There is no aeration present on the lake.

*Fountain present?*

There is no fountain present.

*Action Steps*

A lot of dog fennel and ragweed along edge some vines no plants on 95% of Lake in need of littorials.

**Lake 28**

*Algae?*

Yes, Filamentous.



*Floating Vegetation?*

There is surface vegetation present. Spadderdock.

*Is Vegetation Thriving?*

The vegetation is not thriving.

*Emergent Vegetation*

There is emergent vegetation present. Torpedo Grass, Hemp Vine, Ragweed, Dog Fennel, Ceaser weed, melaleuca, earleaf.

*Is Vegetation Thriving?*

The vegetation is thriving. Torpedo Grass, Hemp Vine, Ragweed, Dog Fennel, Ceaser weed, melaleuca, earleaf.

*Clarity:*

Water clarity is one to two feet.

*Littoral Shelf Present?*

There is a littoral shelf present. Softstem Bulrush, Arrowhead.

*New Growth?*

There is no new littoral growth present.

*Plants Needed?*

Additional littoral plants are recommended at this time. Level of Urgency- Now.

*Aeration Present?*

There is no aeration present on the lake.

*Fountain present?*

There is no fountain present.

*Action Steps*

Large infestation of exotics including Cesar weed earleaf Acacia and Melaleuca limited Littorial in need of beneficials.



**Large earleaf on shoreline**

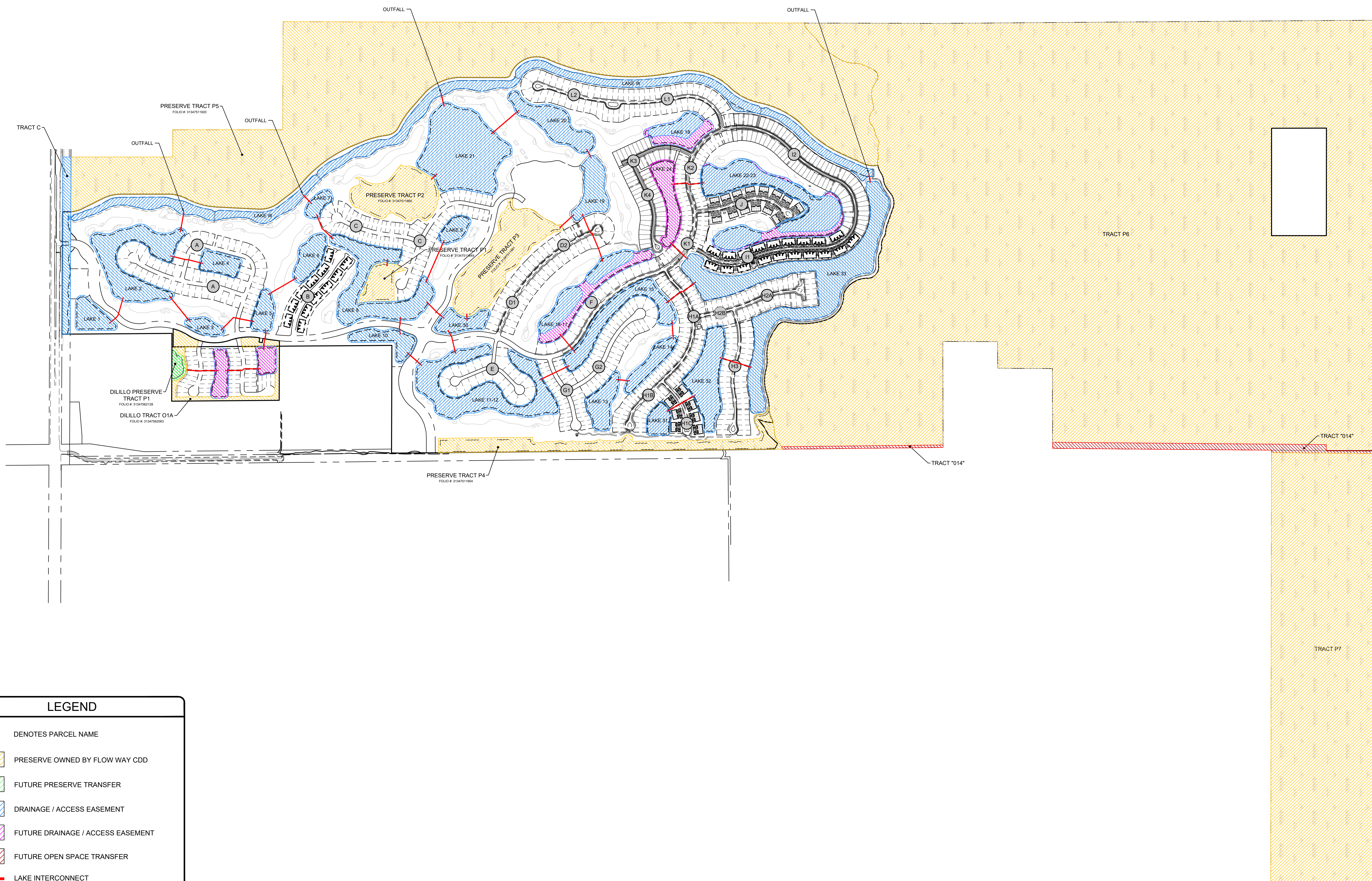


**Vines and primrose taking over**



# **Exhibit 1**

**(District Facility Locations)**



**LEGEND**

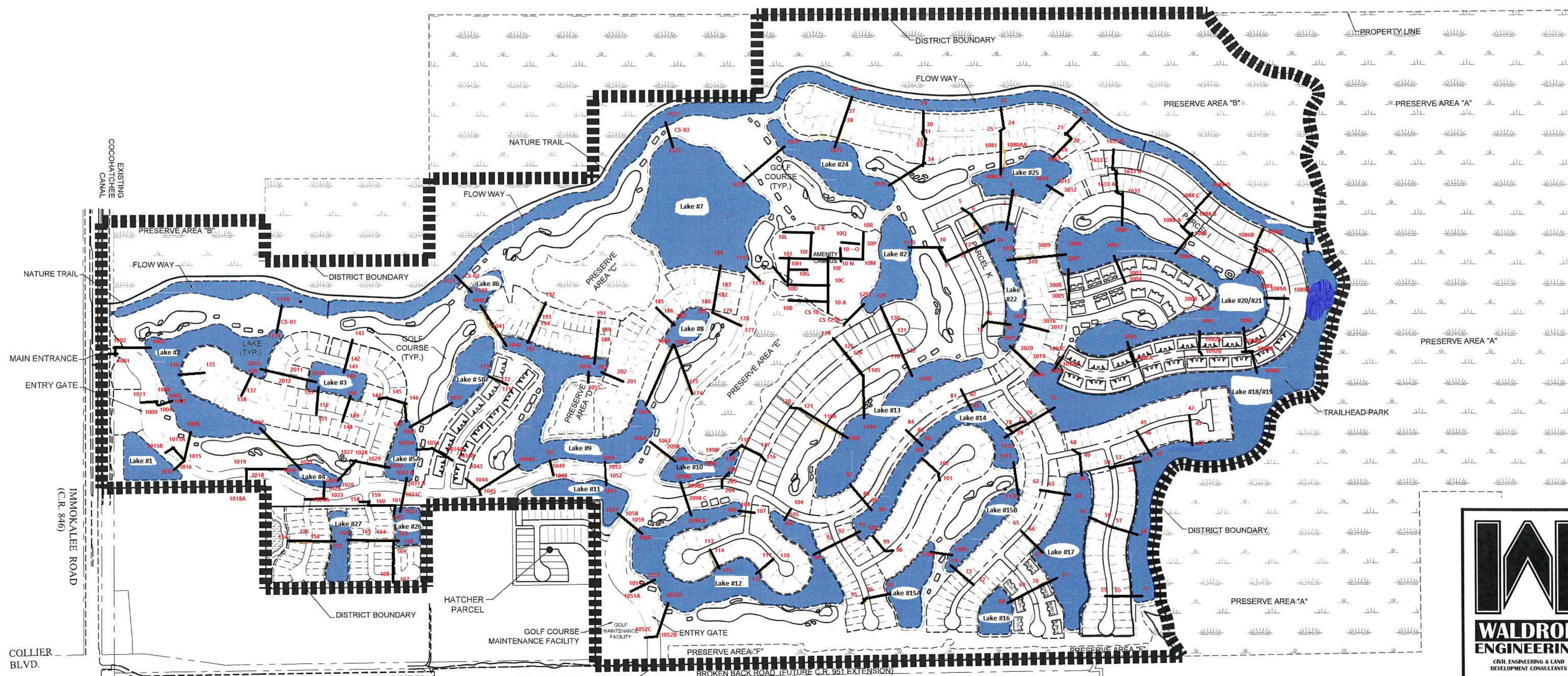
- C DENOTES PARCEL NAME
- PRESERVE OWNED BY FLOW WAY CDD
- FUTURE PRESERVE TRANSFER
- DRAINAGE / ACCESS EASEMENT
- FUTURE DRAINAGE / ACCESS EASEMENT
- FUTURE OPEN SPACE TRANSFER
- LAKE INTERCONNECT

NOTES:  
UTILITIES ARE CONVEYED TO COLLIER COUNTY

B:\Projects\276-11 (Esplanade Naples) CDD\AutoCAD\276-11-113 CDD Ownership Exhibit\Current Plans\27611E1302.dwg  
3/13/2019 1:21:46 PM

# **Exhibit 2**

**(District Lake & Stormwater Locations)**



B:\Projects\26-11 (Elevante Hughes) CDD\AutoCAD\Drawings\CL\Cover\Plan\26110707.dwg  
 4/16/2020 11:52:31 PM



**WALDROP  
ENGINEERING**

CIVIL ENGINEERING & LAND  
DEVELOPMENT CONSULTANTS  
1103 MARBELLA PLAZA DRIVE  
TAMPA, FL 33619  
P: 813-443-8282 F: 813-443-8285  
EMAIL: info@waldropengineering.com

FLORIDA CERTIFICATE OF AUTHORIZATION 48826

PHASED DISTRICT  
SURFACE WATER  
MANAGEMENT  
FACILITIES EXHIBIT 7

PREPARED FOR:

BOARD OF  
SUPERVISORS FLOW  
WAY CDD

FILE NAME: 276110707  
UPDATED: 4/16/2020