
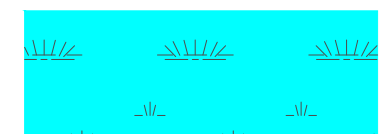



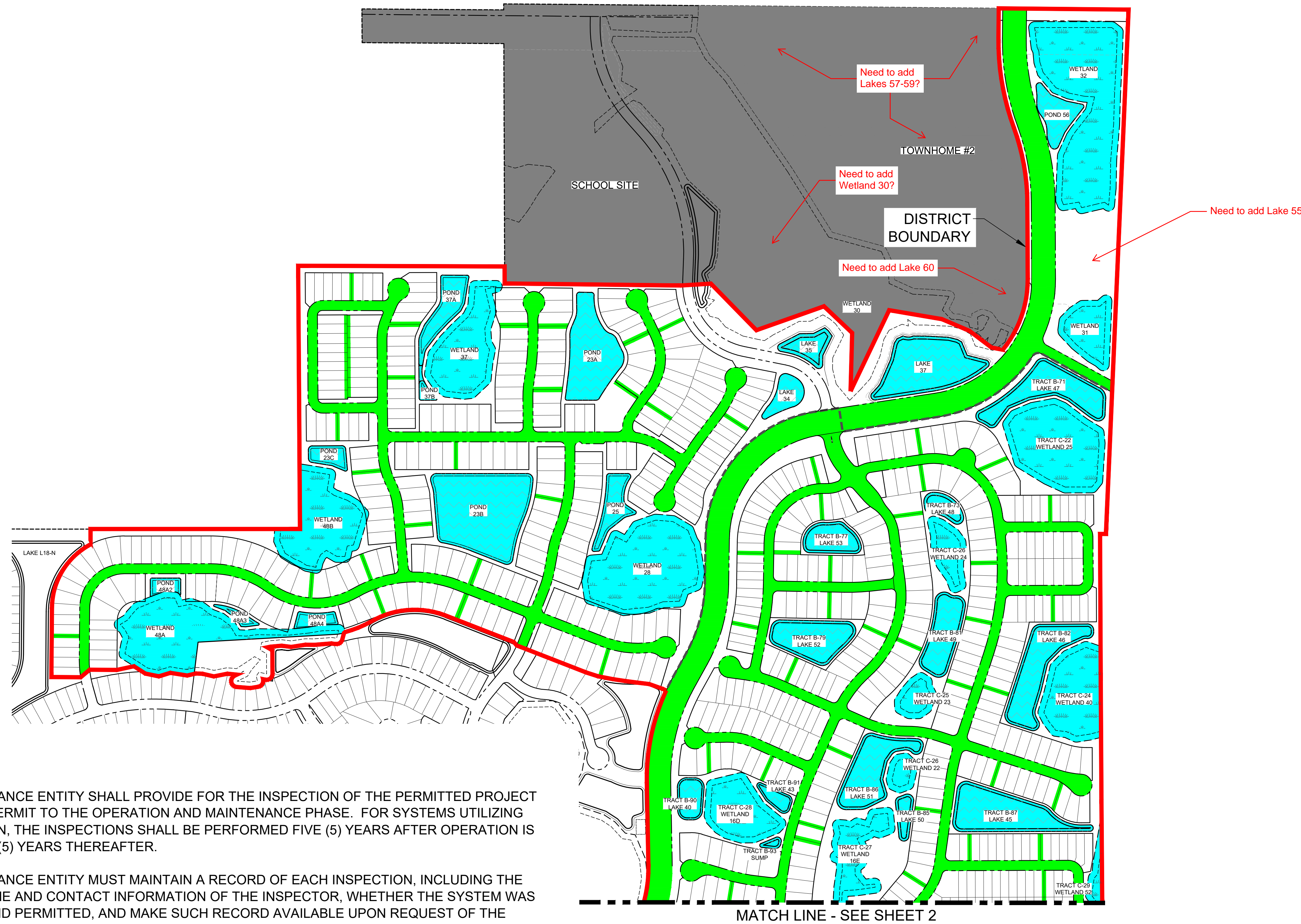
STORMWATER MANAGEMENT SYSTEM LEGEND

-  STORMWATER POND (CDD OWNED TRACT)
-  WETLAND (CDD OWNED TRACT)
-  DRAINAGE MAINTENANCE AREA (CDD GRANTED ACCESS)

NOTE: PLEASE REFER TO APPROVED CONSTRUCTION PLANS FOR DRAINAGE PIPE LOCATIONS AND OUTFALLS

Wetland Name	Area (SF)	Area (AC)
Wetland 7	293613.5	6.7
Wetland 14	36612.09	0.8
Wetland 16F	138778.4	3.2
Wetland 16D	98439.1	2.3
Wetland 16E	109127.8	2.5
Wetland 22	24191.3	0.6
Wetland 23	35157.0	0.8
Wetland 24	49716.7	1.1
Wetland 25	183813.4	4.2
Wetland 28	236002.2	5.4
Wetland 31	71230.0	1.6
Wetland 32	316496.7	7.3
Wetland 37	141439.2	3.2
Wetland 40	127125.8	2.9
Wetland 48A	198729.6	4.6
Wetland 48B	155203.5	3.6
Wetland 52	30629.9	0.7
Total	2246305.8	51.6

Lake Name	Area (SF)	Area (AC)
Lake 15A	63452.7	1.5
Lake PSW-2D	16536.2	0.4
Lake 18S	52349.5	1.2
Lake 41	172860.6	4.0
Lake 17E	94617.6	2.2
Lake 17W	162045.3	3.7
Lake 21E	14238.1	0.3
Lake 21W	116919.0	2.7
Lake 21N	50532.5	1.2
Lake 40	25492.0	0.6
B-93 Sump	4198.0	0.1
Lake 43	13917.4	0.3
Lake 50	15963.4	0.4
Lake 51	80952.7	1.9
Lake 45	103478.2	2.4
Lake 46	92544.2	2.1
Lake 49	60061.8	1.4
Lake 52	70728.7	1.6
Lake 48	20051.5	0.5
Lake 53	38732.9	0.9
Lake 47	91653.3	2.1
Lake 37	119518.6	2.7
Pond 56	38019.4	0.9
Lake 34	24965.2	0.6
Lake 35	29331.0	0.7
Pond 25	36166.9	0.8
Pond 23A	102290.2	2.3
Pond 23B	181017.9	4.2
Pond 37A	43749.5	1.0
Pond 37B	6701.5	0.2
Pond 23C	18864.6	0.4
Pond 48A4	13928.3	0.3
Pond 48A3	8198.9	0.2
Pond 48A2	11619.4	0.3
Total	1995696.8	45.8



NOTE:

THE OPERATION AND MAINTENANCE ENTITY SHALL PROVIDE FOR THE INSPECTION OF THE PERMITTED PROJECT AFTER CONVERSION OF THE PERMIT TO THE OPERATION AND MAINTENANCE PHASE. FOR SYSTEMS UTILIZING RETENTION OR WET DETENTION, THE INSPECTIONS SHALL BE PERFORMED FIVE (5) YEARS AFTER OPERATION IS AUTHORIZED AND EVERY FIVE (5) YEARS THEREAFTER.

THE OPERATION AND MAINTENANCE ENTITY MUST MAINTAIN A RECORD OF EACH INSPECTION, INCLUDING THE DATE OF INSPECTION, THE NAME AND CONTACT INFORMATION OF THE INSPECTOR, WHETHER THE SYSTEM WAS FUNCTIONING AS DESIGNED AND PERMITTED, AND MAKE SUCH RECORD AVAILABLE UPON REQUEST OF THE DISTRICT.

WITHIN 30 DAYS OF ANY FAILURE OF A STORMWATER MANAGEMENT SYSTEM OR DEVIATION FROM THE PERMIT, AN INSPECTION REPORT SHALL BE SUBMITTED USING FORM 62-330.311(1), "OPERATION AND MAINTENANCE INSPECTION CERTIFICATION" DESCRIBING THE REMEDIAL ACTIONS TAKEN TO RESOLVE THE FAILURE OR DEVIATION.


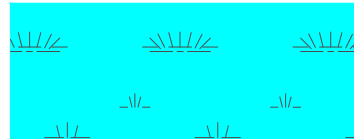

MATCH LINE - SEE SHEET 2



I:\Users\ATWELL\Documents\Projects\2023\15_Artisan_Lakes_CDD_EnvtDrawings-Exhibit\23-15-02_Maint_EnvtDrawings\Current\Plan\REV01\ALE_CDD_O&M_EnvtDraw.dwg 1/19/2024 2:02:52 PM



STORMWATER MANAGEMENT SYSTEM LEGEND

-  STORMWATER POND (CDD OWNED TRACT)
-  WETLAND (CDD OWNED TRACT)
-  DRAINAGE MAINTENANCE AREA (CDD GRANTED ACCESS)

NOTE: PLEASE REFER TO APPROVED CONSTRUCTION PLANS FOR DRAINAGE PIPE LOCATIONS AND OUTFALLS

Lake Name	Area (SF)	Area (AC)
Lake 15A	63452.7	1.5
Lake PSW-2D	16536.2	0.4
Lake 18S	52349.5	1.2
Lake 41	172860.6	4.0
Lake 17E	94617.6	2.2
Lake 17W	162045.3	3.7
Lake 21E	14238.1	0.3
Lake 21W	116919.0	2.7
Lake 21N	50532.5	1.2
Lake 40	25492.0	0.6
B-93 Sump	4198.0	0.1
Lake 43	13917.4	0.3
Lake 50	15963.4	0.4
Lake 51	80952.7	1.9
Lake 45	103478.2	2.4
Lake 46	92544.2	2.1
Lake 49	60061.8	1.4
Lake 52	70728.7	1.6
Lake 48	20051.5	0.5
Lake 53	38732.9	0.9
Lake 47	91653.3	2.1
Lake 37	119518.6	2.7
Pond 56	38019.4	0.9
Lake 34	24965.2	0.6
Lake 35	29331.0	0.7
Pond 25	36166.9	0.8
Pond 23A	102290.2	2.3
Pond 23B	181017.9	4.2
Pond 37A	43749.5	1.0
Pond 37B	6701.5	0.2
Pond 23C	18864.6	0.4
Pond 48A4	13928.3	0.3
Pond 48A3	8198.9	0.2
Pond 48A2	11619.4	0.3
Total	1995696.8	45.8

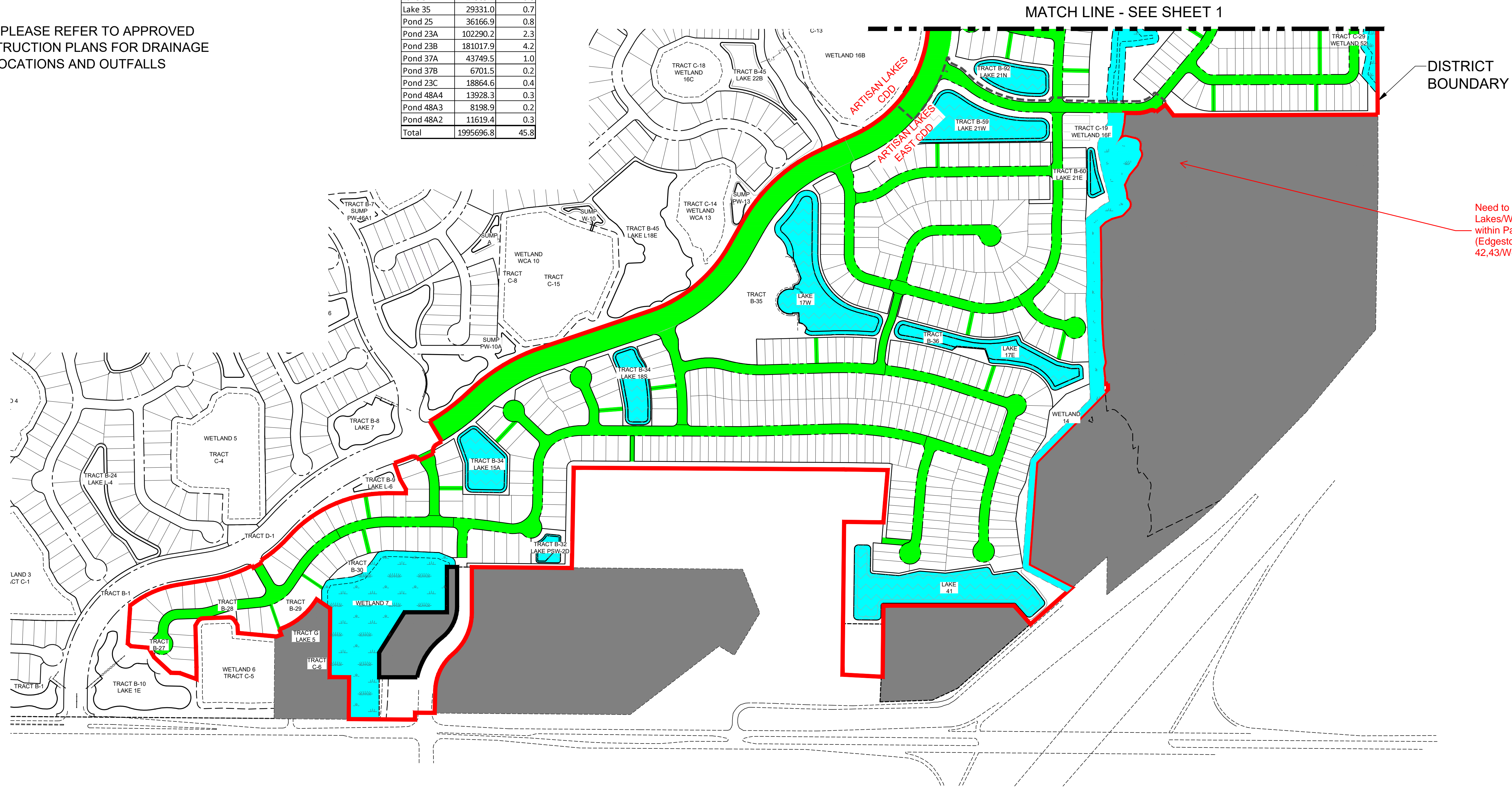
Wetland Name	Area (SF)	Area (AC)
Wetland 7	293613.5	6.7
Wetland 14	36612.09	0.8
Wetland 16F	138778.4	3.2
Wetland 16D	98439.1	2.3
Wetland 16E	109127.8	2.5
Wetland 22	24191.3	0.6
Wetland 23	35157.0	0.8
Wetland 24	49716.7	1.1
Wetland 25	183813.4	4.2
Wetland 28	236002.2	5.4
Wetland 31	71230.0	1.6
Wetland 32	316496.7	7.3
Wetland 37	141439.2	3.2
Wetland 40	127125.8	2.9
Wetland 48A	198729.6	4.6
Wetland 48B	155203.5	3.6
Wetland 52	30629.9	0.7
Total	2246305.8	51.6

NOTE:

THE OPERATION AND MAINTENANCE ENTITY SHALL PROVIDE FOR THE INSPECTION OF THE PERMITTED PROJECT AFTER CONVERSION OF THE PERMIT TO THE OPERATION AND MAINTENANCE PHASE. FOR SYSTEMS UTILIZING RETENTION OR WET DETENTION, THE INSPECTIONS SHALL BE PERFORMED FIVE (5) YEARS AFTER OPERATION IS AUTHORIZED AND EVERY FIVE (5) YEARS THEREAFTER.

THE OPERATION AND MAINTENANCE ENTITY MUST MAINTAIN A RECORD OF EACH INSPECTION, INCLUDING THE DATE OF INSPECTION, THE NAME AND CONTACT INFORMATION OF THE INSPECTOR, WHETHER THE SYSTEM WAS FUNCTIONING AS DESIGNED AND PERMITTED, AND MAKE SUCH RECORD AVAILABLE UPON REQUEST OF THE DISTRICT.

WITHIN 30 DAYS OF ANY FAILURE OF A STORMWATER MANAGEMENT SYSTEM OR DEVIATION FROM THE PERMIT, AN INSPECTION REPORT SHALL BE SUBMITTED USING FORM 62-330.311(1), "OPERATION AND MAINTENANCE INSPECTION CERTIFICATION" DESCRIBING THE REMEDIAL ACTIONS TAKEN TO RESOLVE THE FAILURE OR DEVIATION.



I:\Projects\2023\23-35_Artisan_Lakes_CDD_Enhancement\Current\Plan\REV01\ALE_CDD_OAM_Enhancement.dwg
 1/19/2024 1:57:37 PM