



November 30, 2023

Mr. Brad D. Cook, P.G.
South Florida Water Management District
2301 McGregor Boulevard
Fort Myers, Florida 33901

**RE: Compliance Submittals
Flow Way Community Development District, Collier County, Florida
SFWMD Water Use Permit No. 11-02032-W**

Dear Mr. Cook:

Water Science Associates, Inc. is pleased to hereby submit Compliance Submittals in accordance with Special Permit Condition No. 20.

Water Science Associates, Inc. is hereby submitting a Water Level Monitoring Program report for the Flow Way Community Development District project site through October 2023. The monitoring program is required under Special Permit Condition No. 20 of the project's Water Use Permit No. 11-02032-W, issued on May 13, 2020. Special Permit Condition No. 20 requires the quarterly submittal of a hydrograph for each well showing daily groundwater elevation, land surface elevation, precipitation, and net on-site lake withdrawal (on-site lake withdrawal minus groundwater recharge). In addition, a single monthly water level value is to be reported from each monitoring well using the lowest water level recorded at each well in a given month. All elevations are referenced in feet NGVD. Refer to **Appendix A** for a map of pertinent features of the project site.

Daily water level monitoring data is collected on a quarterly basis in monitor wells MW-1, MW-2, MW-3, MW-4, and MW-5. The hydrographs of these monitoring sites include applicable land surface elevations, cumulative daily rainfall amounts, and groundwater elevation (**Appendix B**). Data from monitoring sites MW-1 and MW-2 is not available at this time due to prohibitive site access. Future quarterly submittals will include this data for the missing time period. Monthly readings from the project site's two production wells are not available at this time. Rainfall data is provided by the South Florida Water Management District (SFWMD) station COCO3_R, located approximately 1.3 miles west of the project site. Lowest recorded water levels for each of the monitoring wells, on a monthly basis, are provided in **Appendix C** in addition to net on-site lake withdrawals.

Should you have any questions or would like additional information, please do not hesitate to contact Andrew Melamet via phone or email.

Sincerely,

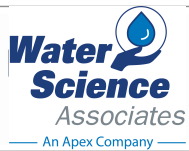
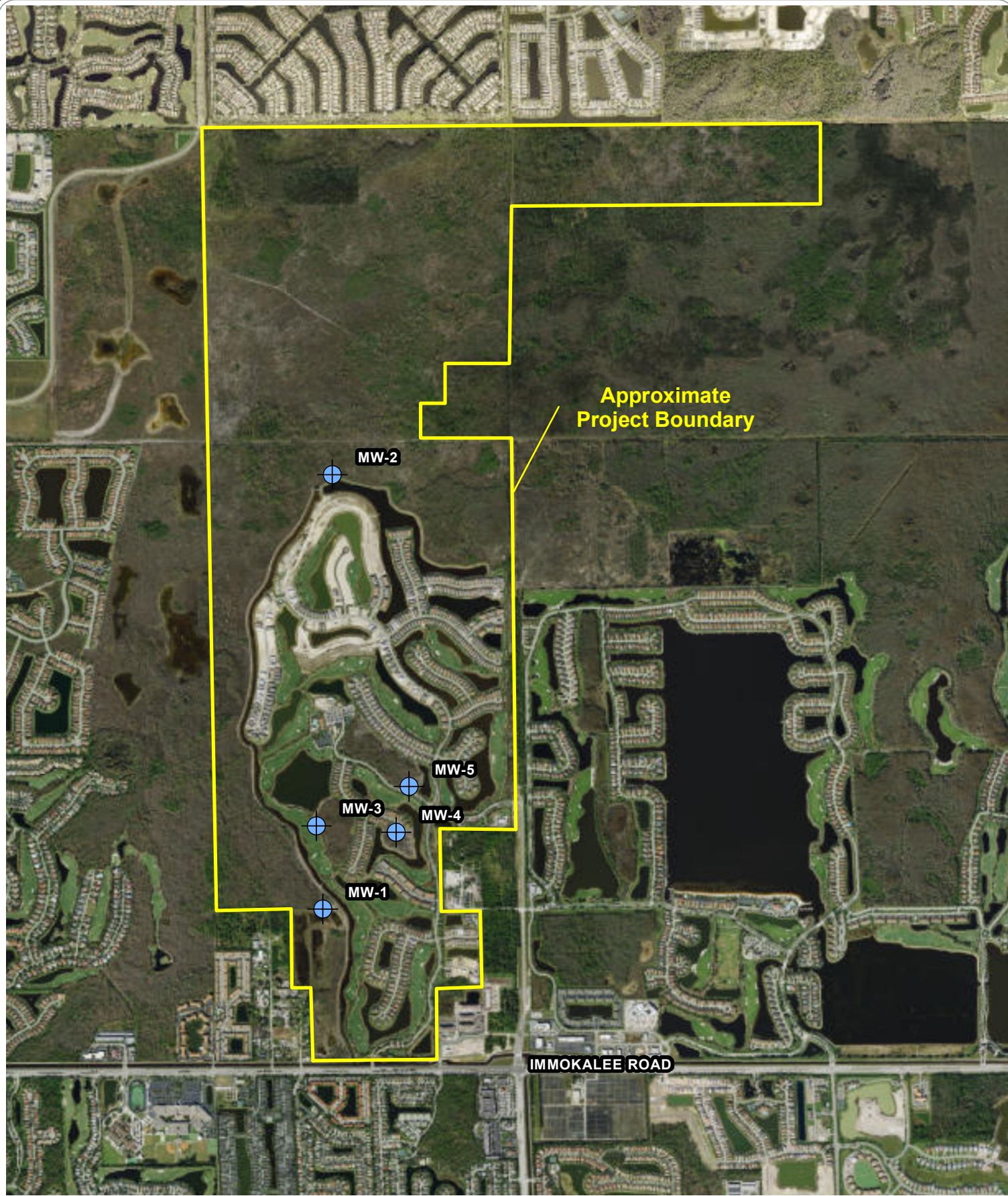
Andrew Melamet, E.I.
Staff Engineer/ Project Manager
Water Science Associates, Inc.
Office: 239.935.8073
Mobile: 239.955.4802
Email: andrew@wsaconsult.com

Attachments:

- Appendix A - Project Boundary and Pertinent Features
- Appendix B - Hydrographs for Monitor Wells MW-1 through MW- 5
- Appendix C - Monthly Low Water Levels and Withdrawals

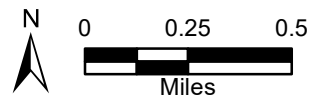
APPENDIX A

Project Boundary and Pertinent Features



FLOW WAY CDD
COMPLIANCE MONITORING

COA30437
NOVEMBER 2023



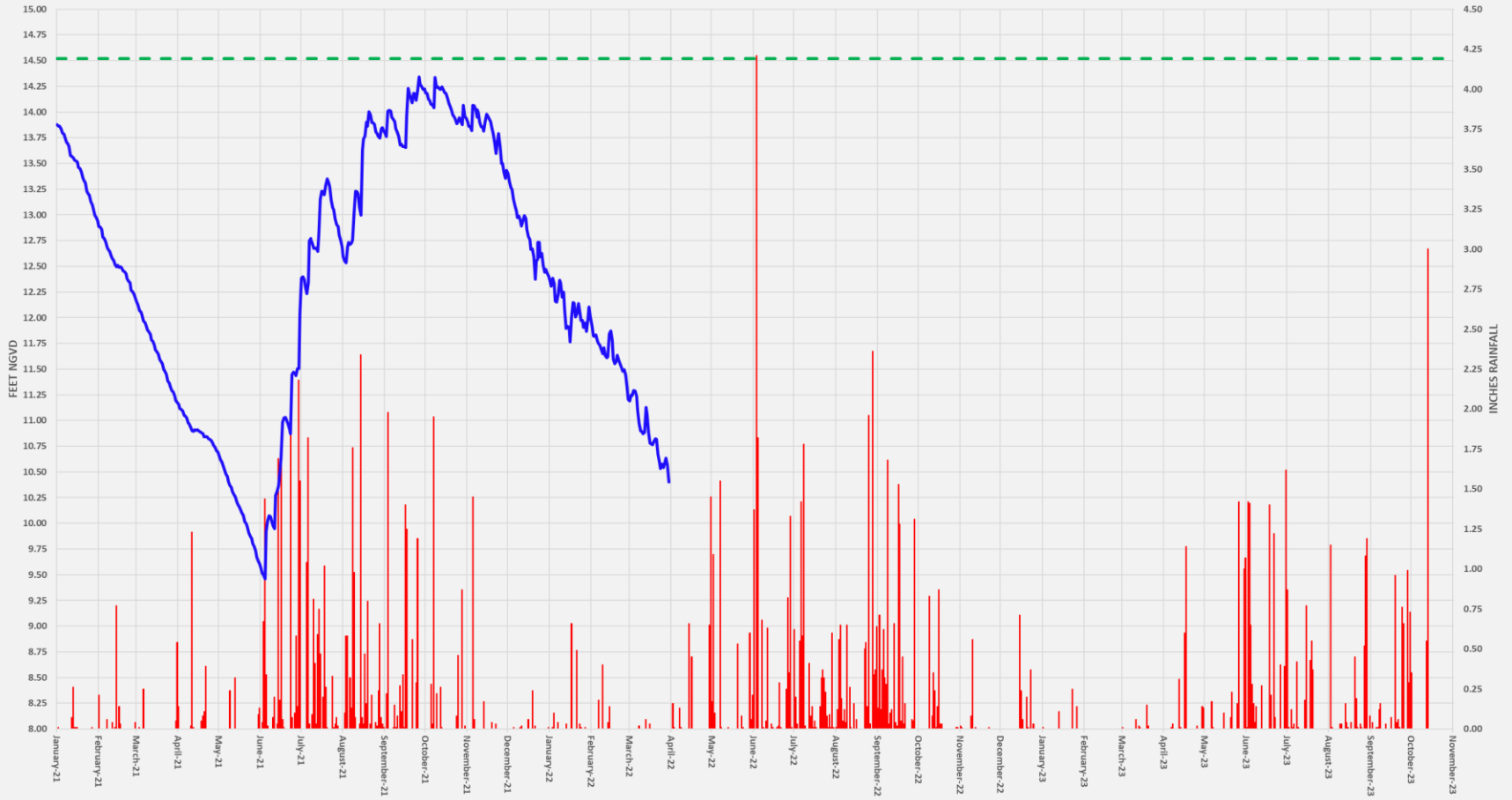
APPROXIMATE PROJECT BOUNDARY AND MONITOR WELL LOCATIONS.

APPENDIX B

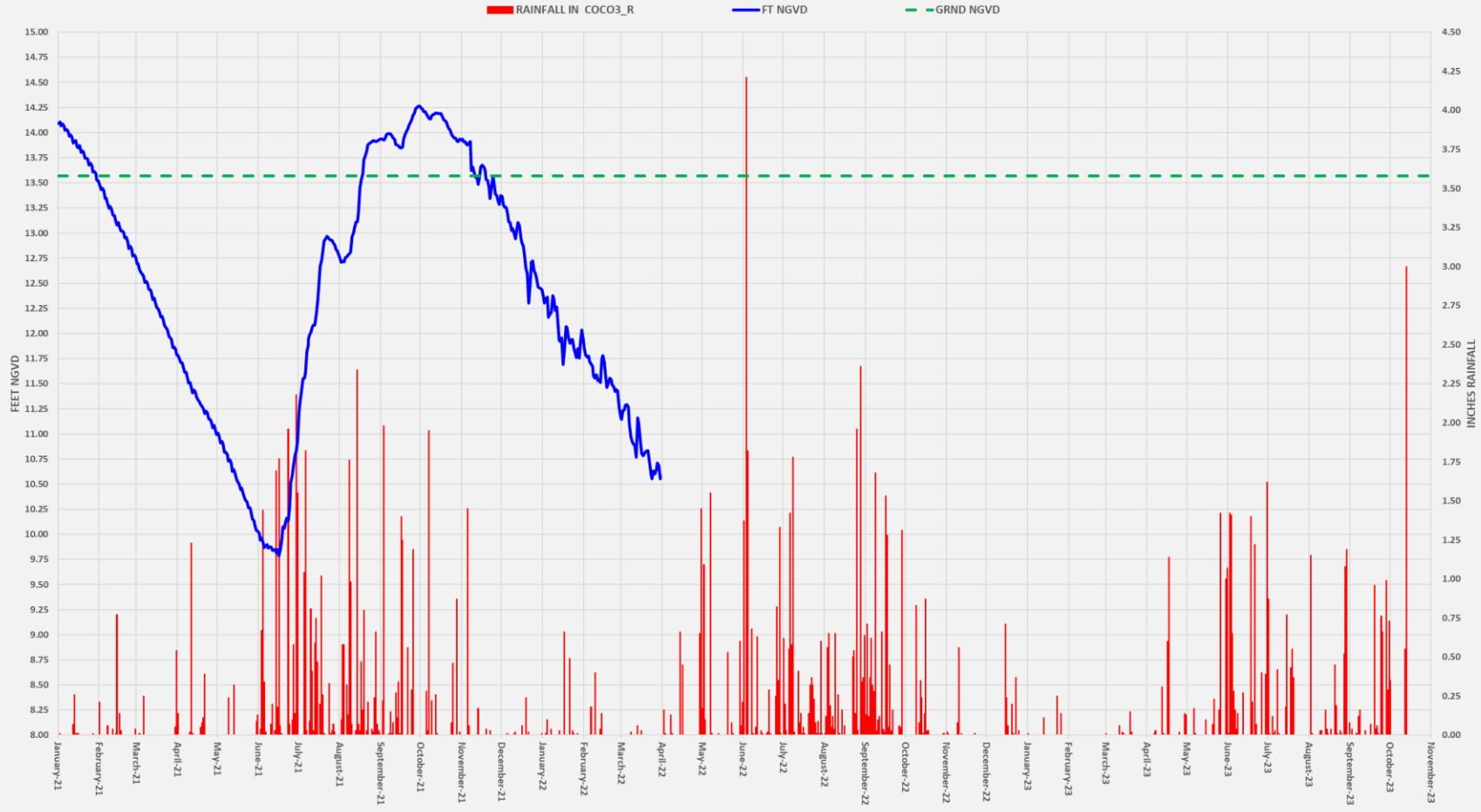
Hydrographs for Monitor Wells MW-1 Through MW-5

FLOW WAY CDD MW - 1

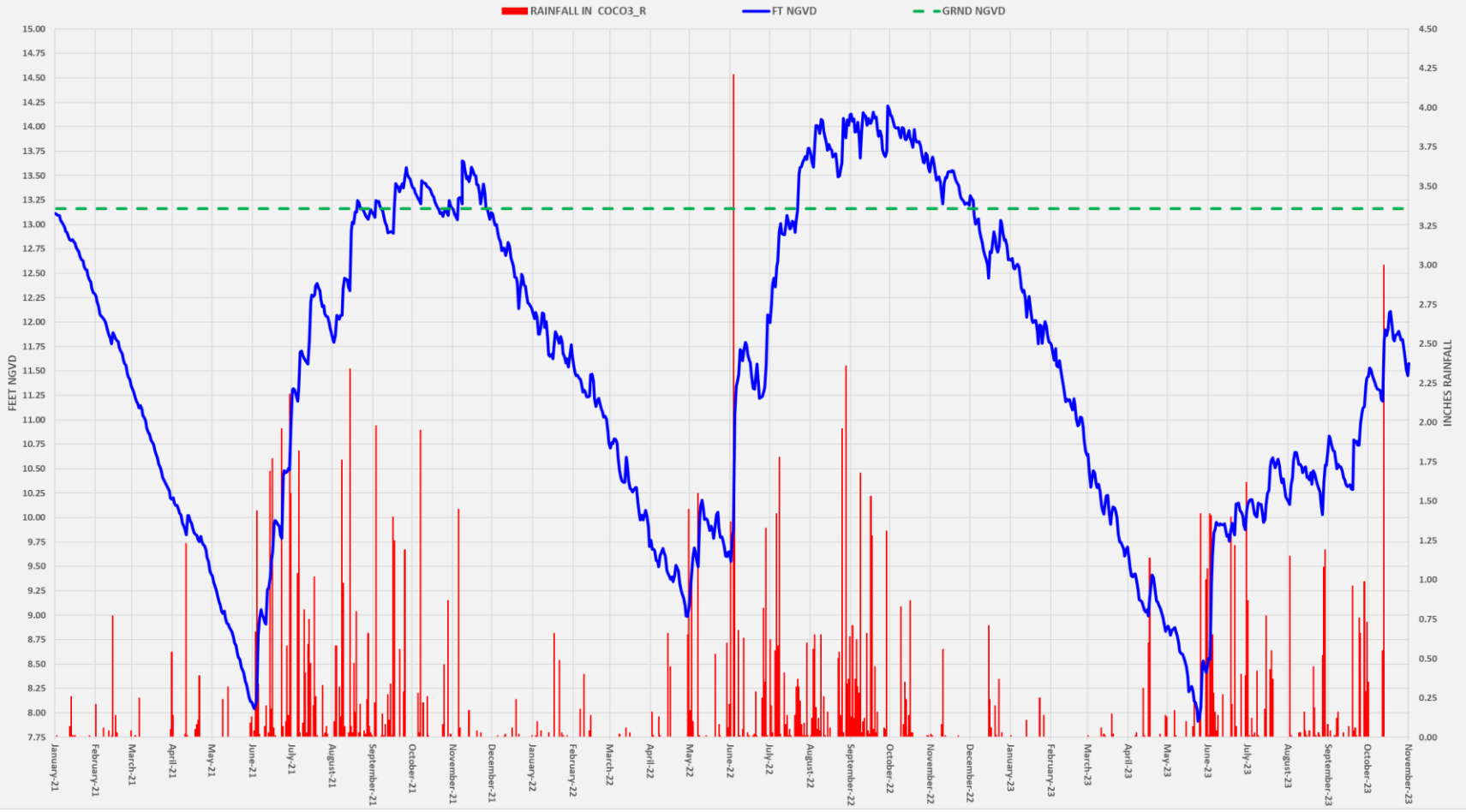
RAINFALL IN COCO3_R FT NGVD GRND NGVD



FLOW WAY CDD MW - 2

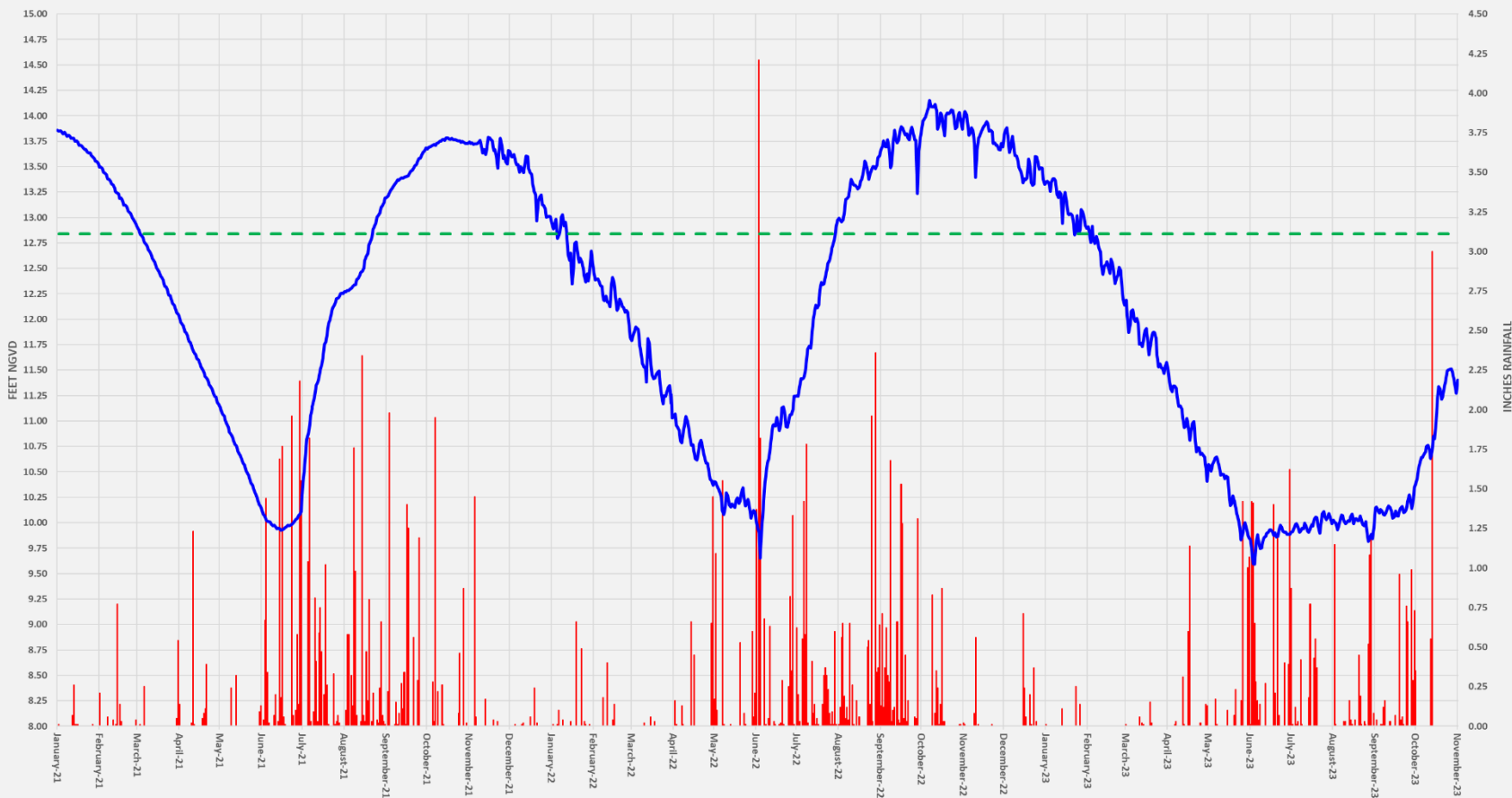


FLOW WAY CDD MW - 3

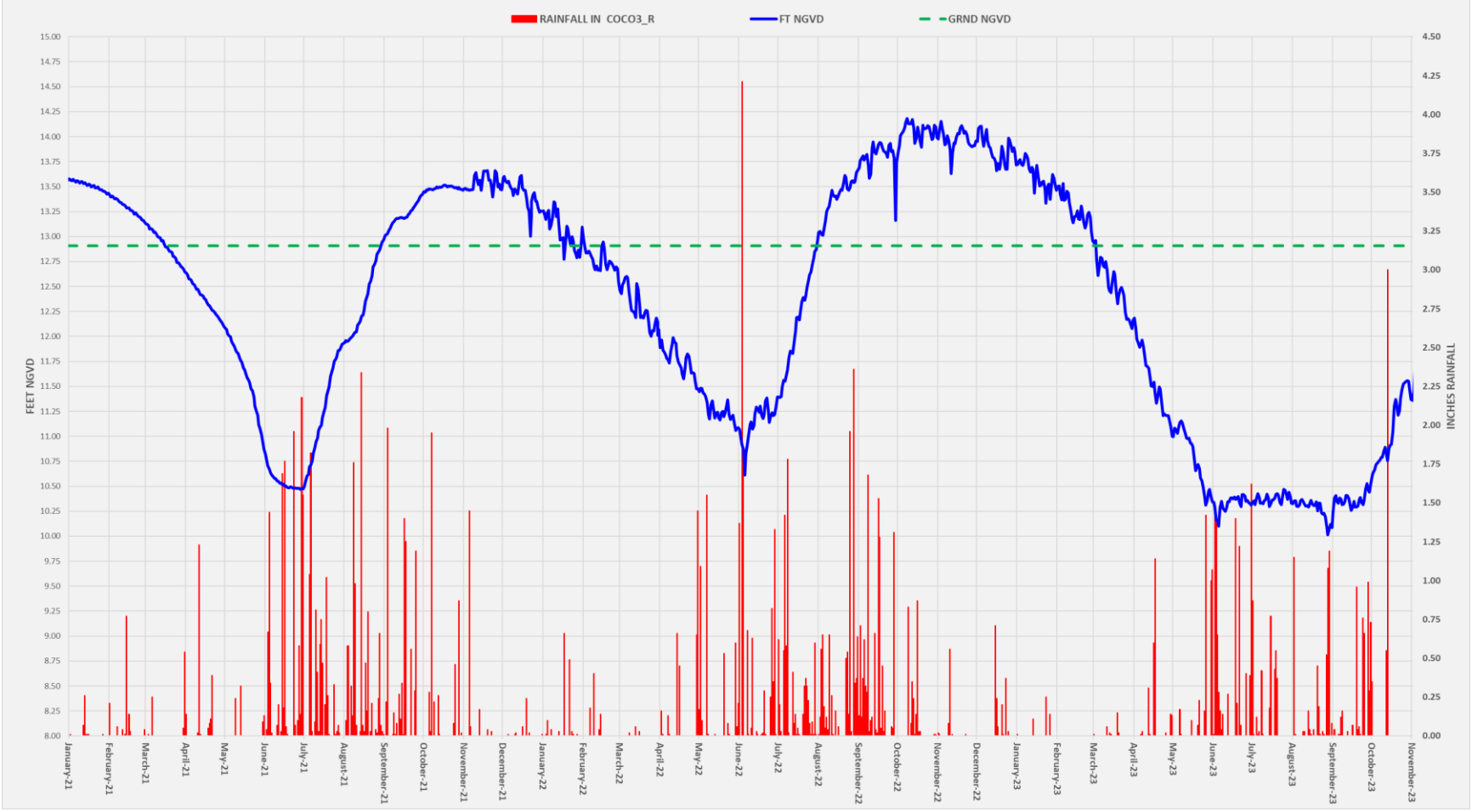


FLOW WAY CDD MW - 4

RAINFALL IN COCO3_R FT NGVD GRND NGVD



FLOW WAY CDD MW - 5



APPENDIX C

Monthly Low Water Levels and Withdrawals

Lowest Recorded Water Level (ft NGVD)

<u>Month</u>	<u>MW-1</u>	<u>MW-2</u>	<u>MW-3</u>	<u>MW-4</u>	<u>MW-5</u>
May-20	9.49	10.33	8.44	9.85	10.78
Jun-20	10.84	10.34	9.77	9.92	10.74
Jul-20	10.87	10.58	9.76	10.38	10.66
Aug-20	11.53	11.11	10.48	10.58	10.67
Sep-20	12.78	12.63	12.05	11.44	11.52
Oct-20	13.94	14.09	13.18	13.53	13.05
Nov-20	13.96	14.17	13.21	13.83	13.51
Dec-20	13.86	14.11	13.12	13.86	13.56
Jan-21	12.88	13.42	12.33	14.39	13.45
Feb-21	12.13	12.66	11.38	13.79	13.16
Mar-21	11.12	11.69	10.23	12.91	12.67
Apr-21	10.63	10.90	9.47	12.02	12.12
May-21	9.54	9.93	8.15	11.02	10.85
Jun-21	9.40	9.69	8.09	10.79	10.50
Jul-21	12.18	11.12	11.23	11.22	10.58
Aug-21	12.47	12.61	11.84	13.13	11.98
Sep-21	13.60	13.75	12.95	14.06	13.05
Oct-21	13.88	13.91	13.08	13.67	13.45
Nov-21	13.35	13.29	13.05	13.48	13.40
Dec-21	12.37	12.30	12.14	12.97	13.00
Jan-22	11.76	11.69	11.54	12.35	12.77
Feb-22	11.20	11.18	10.76	11.82	12.46
Mar-22	10.40	10.55	9.90	11.17	12.00
Apr-22	N/A	N/A	8.99	10.37	11.45
May-22	N/A	N/A	9.26	10.04	11.06
Jun-22	N/A	N/A	9.55	9.65	10.61
Jul-22	N/A	N/A	11.99	11.24	11.39
Aug-22	N/A	N/A	13.49	12.96	13.01
Sep-22	N/A	N/A	13.68	13.24	13.16
Oct-22	N/A	N/A	13.53	13.80	13.89
Nov-22	N/A	N/A	13.20	13.40	13.63
Dec-22	N/A	N/A	12.45	13.32	13.66
Jan-23	N/A	N/A	11.78	12.83	13.34
Feb-23	N/A	N/A	10.64	12.14	12.94
Mar-23	N/A	N/A	9.60	11.47	12.08
Apr-23	N/A	N/A	8.84	10.41	11.00
May-23	N/A	N/A	7.92	9.83	10.31
Jun-23	N/A	N/A	8.55	9.59	10.10
Jul-23	N/A	N/A	9.95	9.90	10.30
Aug-23	N/A	N/A	10.03	9.82	10.01
Sep-23	N/A	N/A	10.29	10.05	10.26
Oct-23	N/A	N/A	11.19	10.39	10.64

Reported Pumpage for WUP 11-02032-W

Date	Monthly	Monthly	Total Monthly	Monthly	Monthly	Total Monthly	Net
	Withdrawal for Pump Station 1 (MG)	Withdrawal for Pump Station 2 (MG)	Pump Stations Withdrawal (MG)	Withdrawal for PW-1 (MG)	Withdrawal for PW-2 (MG)	Well Withdrawals (MG)	Withdrawals (MG)
Jan-21	29.86	8.60	38.45	N/A	N/A	N/A	N/A
Feb-21	31.59	7.62	39.21	N/A	N/A	N/A	N/A
Mar-21	35.64	12.75	48.39	N/A	N/A	N/A	N/A
Apr-21	34.67	8.69	43.36	N/A	N/A	N/A	N/A
May-21	31.82	18.52	50.34	N/A	N/A	N/A	N/A
Jun-21	30.31	6.37	36.68	N/A	N/A	N/A	N/A
Jul-21	17.20	4.09	21.29	N/A	N/A	N/A	N/A
Aug-21	12.33	1.19	13.52	N/A	N/A	N/A	N/A
Sep-21	12.19	5.37	17.57	N/A	N/A	N/A	N/A
Oct-21	19.11	9.35	28.46	N/A	N/A	N/A	N/A
Nov-21	15.00	10.62	25.63	N/A	N/A	N/A	N/A
Dec-21	15.3	12.51	27.81	N/A	N/A	N/A	N/A
Jan-22	11.194	19.56	30.75	N/A	N/A	N/A	N/A
Feb-22	10.162	21.498	31.66	N/A	N/A	N/A	N/A
Mar-22	18.628	21.959	40.59	N/A	N/A	N/A	N/A
Apr-22	25.32	11.376	36.70	N/A	N/A	N/A	N/A
May-22	28.306	23.359	51.67	N/A	N/A	N/A	N/A
Jun-22	18.849	13.279	32.13	N/A	N/A	N/A	N/A
Jul-22	15.836	7.498	23.33	N/A	N/A	N/A	N/A
Aug-22	22.956	8.738	31.69	N/A	N/A	N/A	N/A
Sep-22	16.051	1.775	17.83	N/A	N/A	N/A	N/A
Oct-22	20.621	12.18	32.80	N/A	N/A	N/A	N/A
Nov-22	25.802	14.213	40.02	N/A	N/A	N/A	N/A
Dec-22	24.052	16.241	40.29	N/A	N/A	N/A	N/A
Jan-23	24.162	12.839	37.00	N/A	N/A	N/A	N/A
Feb-23	22.817	21.831	44.65	N/A	N/A	N/A	N/A
Mar-23	28.92	25.142	54.06	N/A	N/A	N/A	N/A
Apr-23	24.668	23.305	47.97	N/A	N/A	N/A	N/A
May-23	11.224	27.976	39.20	N/A	N/A	N/A	N/A
Jun-23	38.995	11.866	50.86	N/A	N/A	N/A	N/A
Jul-23	22.211	15.235	37.45	N/A	N/A	N/A	N/A
Aug-23	24.745	13.86	38.61	N/A	N/A	N/A	N/A
Sep-23	20.896	9.604	30.50	N/A	N/A	N/A	N/A
Oct-23	19.216	15.451	34.67	N/A	N/A	N/A	N/A

Lowest Monthly Water Levels and Monthly Withdrawals - January 2021 to October 2023

